

Downhole Translator Modules: XL115 & XL215

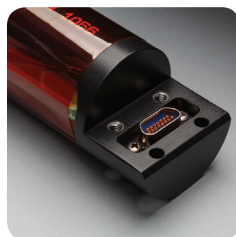
XXT's Downhole Translators provide a means for integrating third-party intelligent and non-intelligent devices into the tool string for telemetering both analog and digital third-party signals to surface.

ADVANTAGES

- ✓ Ability to interface third-party sensors to a QDT-compatible tool string
- ✓ Interface to intelligent (serial) data and non-intelligent (voltage and frequency) signals
- ✓ 4 serial interface options
- ✓ Free-format input syntax for labeled numeric data parameters
- ✓ Wide operating voltage and low power consumption

FEATURES

- ✓ Telemetry-compatible with QDT and XXT MWD systems
- ✓ Available in a strongback chassis or as a molded module for integration into your own chassis
- ✓ Low power consumption (approx 7mA @ 28Vdc)
- ✓ Wide operating voltage range (17.5 - 35Vdc)
- ✓ Battery-style end connections
- ✓ Multiple Translators can be used in a tool string



Highly reliable lap-joint MDM connectors



Molded modules are durable and serviceable



PRODUCT INFORMATION

Enteq XXT Downhole Tools



SPECIFICATIONS

Length:	9.04 inches	Serial port options (XL115):	RS-232, 0-5v, 0-5v inverted, single wire
Diameter:	1.36 inches (excluding O-rings)	Signal interfaces (XL215):	7 channels of 0-5V analog + 2 channels of frequency input
Power Consumption:	Approx. 7mA @28Vdc	Toolbus Communications:	Use generic variables (GVs) or virtual variables (VVars)
Operating Voltage	16 to 36Vdc	Compatibility:	XXT or QDT MWD systems
Temp Rating:	150°C and 175°C		

The complete Enteq product range

Enteq Upstream provides next-generation MWD systems and components for Directional Drilling. Enteq is pursuing a focused acquisition strategy and investing in product development in order to provide a range of technologies and products to global and regional service companies.

Enteq XXT Downhole Tools

- Directional Sensors
- Directional Interface Module
- Positive Pulser
- Pulser Drivers
- Translator Modules
- Vibration Monitor
- Dual Gamma Interface

Enteq XXT Surface Gear

- Mud Pulse receiver cards
- Surface Translator: Tool to PC
- Full Laversab PC surface system

Enteq XXT Software

- A full suite of programming and MWD output software with multiple specialized applications

Enteq KMS

- MWD mechanical parts
- Mud motor parts
- Float valves
- Fabrication services

MK-100271-01A

Contact

Email: sales@enteq.com

Telephone: +1 (713) 389 5650

Web: www.enteq.com

Locations

Enteq XXT: +1 (408) 486 9980

Enteq KMS: +1 (713) 944 6130

International (UK): +44 1494 618 738

www.enteq-xxt.com

www.enteq-kms.com

www.enteq.com