

Directional Interface Module: DIM

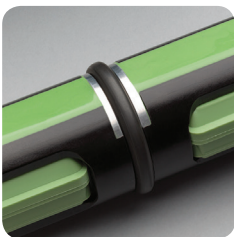
The XXT DIM provides a flexible, intelligent solution for the acquisition, formatting and telemetry of downhole data to surface. It is a drop-in downhole Directional Interface Module providing Mud Pulse Telemetry compatible with industry standards.

ADVANTAGES

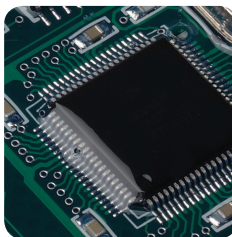
- ✓ Rugged and Field Proven. Over 1,000 DIMs operating with proven reliability at 175°C and high shock and vibration
- ✓ Intelligent power management delivers improved battery life
- ✓ High-speed battery switching eliminates system failure due to primary battery fault
- ✓ Auto-resetting over-voltage protection
- ✓ Compatibility with industry standard telemetry and directional modules allows easy integration

FEATURES

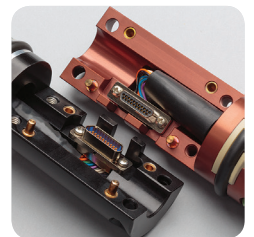
- ✓ Rotation Detection + Dynamic Sequencing optimizes telemetry for maximum data transmission
- ✓ Supports transmission of discrete compensated sensor data (appropriate for ISCWSA error model correction)
- ✓ Compatible with single-wire gamma systems
- ✓ Downhole survey and gamma recording capability



Molded Modules are durable and serviceable.



Intelligent power control extends battery life.



Highly reliable lap-joint MDM connectors.



PRODUCT INFORMATION

Enteq XXT Downhole Tools



SPECIFICATIONS

Length:	20 inches	Operating Voltage:	17.5 - 36 Vdc
Diameter:	1.36 inches (excluding O-rings)	Tool Bus:	XXT and GE/Tensor Compatible 10-wire
Power Consumption	Approx. 7mA @28Vdc	Survey Log:	3,264 Survey records
Temp Rating:	150°C or 175°C	Gamma Log:	Up to 53,144 readings
Directional Sensor Power Control:	Smart, normal, disabled	Dynamic Sequences:	3
Steering Sequences:	6	Survey Sequences:	4
Preconfigured Operating Modes:	4		

The complete Enteq product range

Enteq Upstream provides next-generation MWD systems and components for Directional Drilling. Enteq is pursuing a focused acquisition strategy and investing in product development in order to provide a range of technologies and products to global and regional service companies.

Enteq XXT Downhole Tools

- Directional Sensors
- Directional Interface Module
- Positive Pulser
- Pulser Drivers
- Translator Modules
- Vibration Monitor
- Dual Gamma Interface

Enteq XXT Surface Gear

- Mud Pulse receiver cards
- Surface Translator: Tool to PC
- Full Laversab PC
Surface System

Enteq XXT Software

- A full suite of programming
and MWD output software
with multiple specialized
applications

Enteq KMS

- MWD mechanical parts
- Mud motor parts
- Float valves
- Fabrication services

MK-100119-02A

Contact

Email: sales@enteq.com
Telephone: +1 (713) 389 5650
Web: www.enteq.com

Locations

Enteq XXT: +1 (408) 486 9980 www.enteq-xxt.com
Enteq KMS: +1 (713) 944 6130 www.enteq-kms.com
International (UK): +44 1494 618 738 www.enteq.com