



New

**Caratteristiche:**

Diffusori lineari a feritoie con deflettore rotativo a profilo aerodinamico per grandi portate.

Costruzione:

Alluminio anodizzato estruso, deflettore in polipropilene nero RAL 9005.

Impiego:

A soffitto, in mandata e ripresa.
Altezza di installazione:
2,6 - 4,0 m.

Fissaggio:

- Mediante viti frontali.
- Con staffa interna mobile.
- Con molle all'interno del plenum.

Accessori:

- Plenum di raccordo in acciaio zincato con isolamento.
- Deflettore RAL 9003

Characteristics:

Linear slot diffusers with aifoil section rotating deflector for high airflow.

Construction:

Anodized extruded aluminium, deflector made of RAL 9005 black polypropylene.

Utilization:

For ceiling installation and for air intake and delivery.
Installation height:
2,6 - 4,0 m

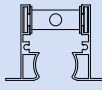
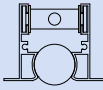
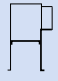
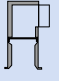
Fixing:

- By frontal screws.
- By inner mounting mobile bracket.
- By springs inside the plenum.

Accessories:

- Galvanized steel connecting plenum with insulation.
- Deflector RAL 9003.

PREZZI / PRICES

Feritoie Slots	Lunghezza Length				
N.	mm*	€	€	€	€
1	800	-	-	-	-
	1000	-	-	-	-
	1500	-	-	-	-
	2000	-	-	-	-
2	800	-	-	-	-
	1000	-	-	-	-
	1500	-	-	-	-
	2000	-	-	-	-
3	800	-	-	-	-
	1000	-	-	-	-
	1500	-	-	-	-
	2000	-	-	-	-
4	800	-	-	-	-
	1000	-	-	-	-
	1500	-	-	-	-
	2000	-	-	-	-

***N.B.:** le lunghezze riportate sono da intendere passaggio aria

***The lengths are actual neck sizes**

VERNICIATURA:

Colori RAL 9010 - 9016: + 15%
Altri colori: prezzi a richiesta

PAINTING:

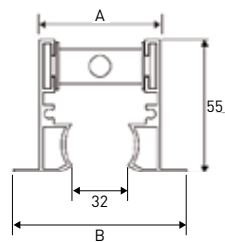
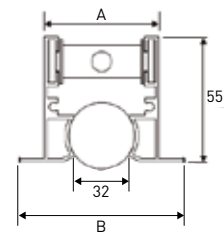
Color RAL 9010 - 9016: + 15%
Different colors: prices on request

MODELLI:

DLPCB 10: Diffusore standard (1)
DLPCB 20: Diffusore con deflettore (1) (2)

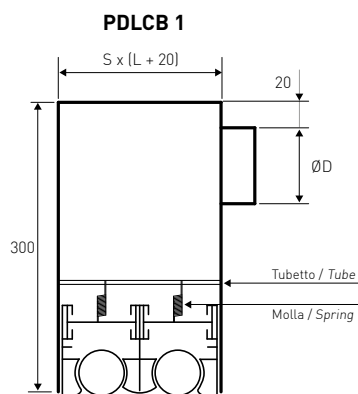
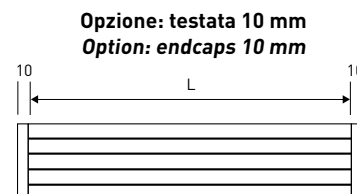
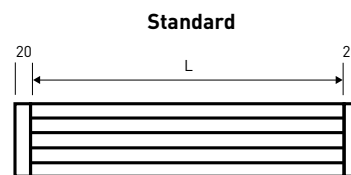
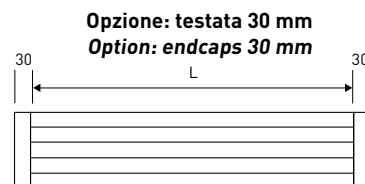
MODELS:

DLPCB 10: Standard diffuser (without sliding control damper and deflectors) (1)
DLPCB 20: Diffuser with deflectors (1) (2)

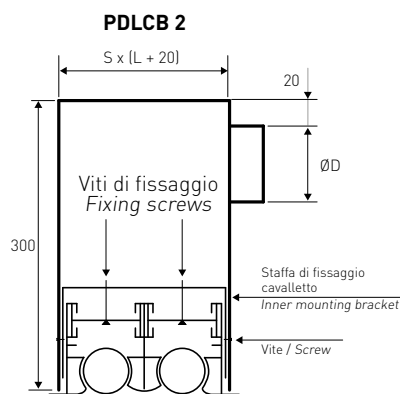
DISEGNI / DRAWINGS**DLPCB 10****DLPCB 20**

MISURE / MEASURES

N. feritoie N. slots	Lunghezza mm Length mm	Ø collarino est. N. collarini Ø spigot N. spitos	A mm	B mm	S mm	NR. CM Molle Spring	NR. CVL Cavalletti Mounting brackets
1	800	98-1	51	73	56	2	2
	1000	98-1				2	2
	1500	98-2				2	2
	2000	98-3				3	2
2	800	148-1	102	124	107	4	2
	1000	148-2				4	2
	1500	148-3				4	2
	2000	148-4				6	2
3	800	198-1	153	175	158	4	2
	1000	198-2				4	2
	1500	198-3				6	2
	2000	198-4				6	3
4	800	198-2	204	226	209	4	2
	1000	198-2				4	2
	1500	198-3				6	2
	2000	198-4				6	3

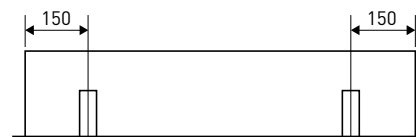


Fissaggio al plenum con molle CM
Fixing the plenum by springs CM

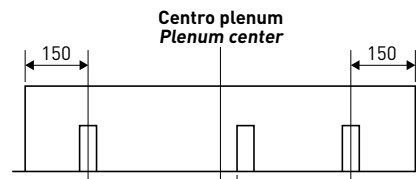


Fissaggio al plenum con staffe CVL-CB cavalletti
Fixing the plenum by inner mounting brackets CVL-CB

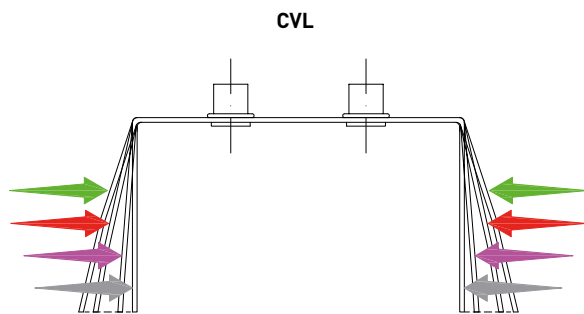
Posizionamento cavalletti CVL all'interno del plenum
Positioning of brackets CVL inside plenum



Vista laterale posizione CVL lunghezza sino 1500 mm
Side view position CVL length to 1500 mm

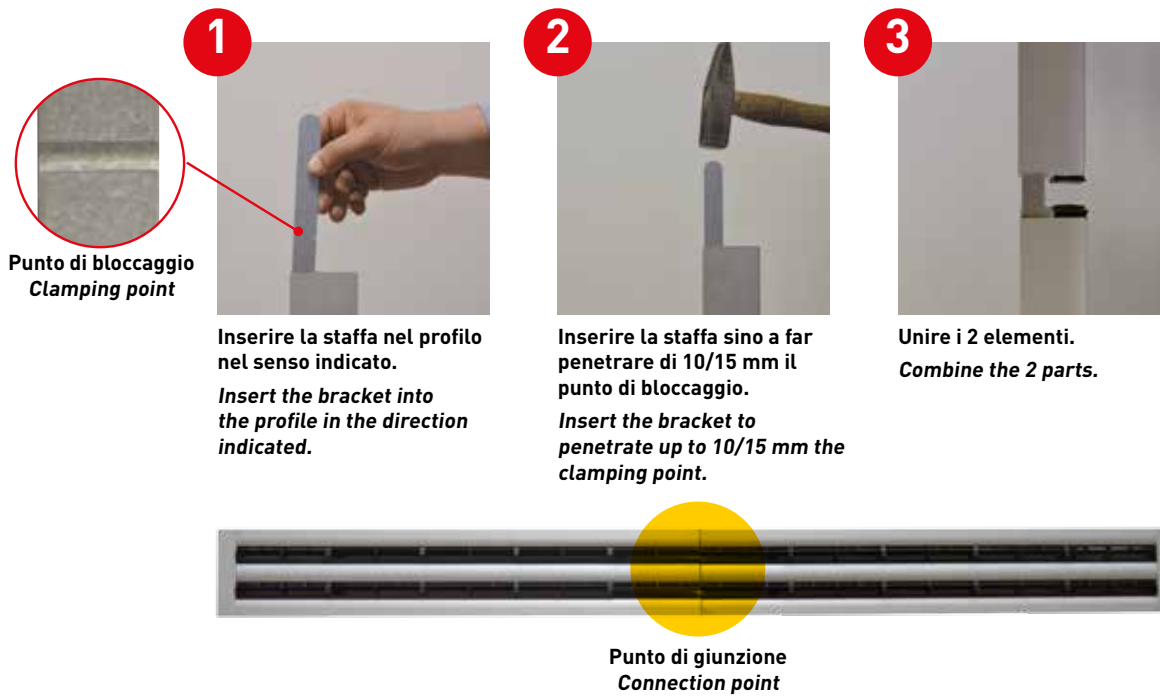


Vista laterale posizione CVL lunghezza oltre 1500 mm
Side view position CVL length over 1500 mm



Modifica configurazione CVL da PDL 3 a PDL 2 con pressione delle dita
Configuration change CVL to PDL 3 to PDL 2 with finger pressure

SOLUZIONE DI CONTINUITÀ / CONTINUITY SOLUTION



ACCESSORI / ACCESSORIES

		€
CVL-CB 1 - 4 Feritoie 1 - 4 Slots		-
CM Molla Spring		-
CG Gancio Hook		-
CC-CN Kit Continuità (2 pezzi) <i>Kit continuity</i> (2 pieces)		-

TABELLA DI SELEZIONE / SELECTION TABLE

Modello Model	A_v [m ²]	Q [m ³ /h]		L_{WA} [dB(A)]		$X_{(0,25)}$ [m]		Dp_t^* [Pa]	
		min	max	min	max	min	max	min	max
DLPCB 1-1000	0,013	80	220	-	43	3,0	7,4	10	50
DLPCB 2-1000	0,026	190	420	24	45	4,1	9,1	10	50
DLPCB 3-1000	0,039	270	600	25	47	4,4	10,1	10	50
DLPCB 4-1000	0,052	340	760	25	47	4,8	10,7	10	50

*senza equalizzatore e serranda completamente aperta - without equalizer and calibration damper completely open