



# A Smarter Breed

## of Centrifugal Fans

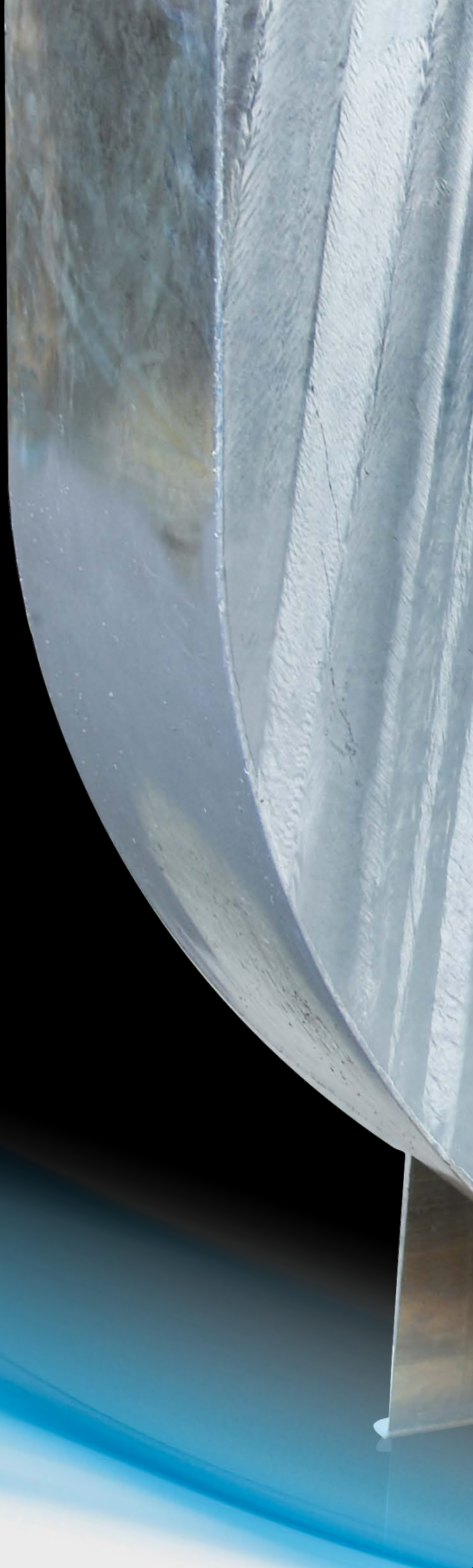
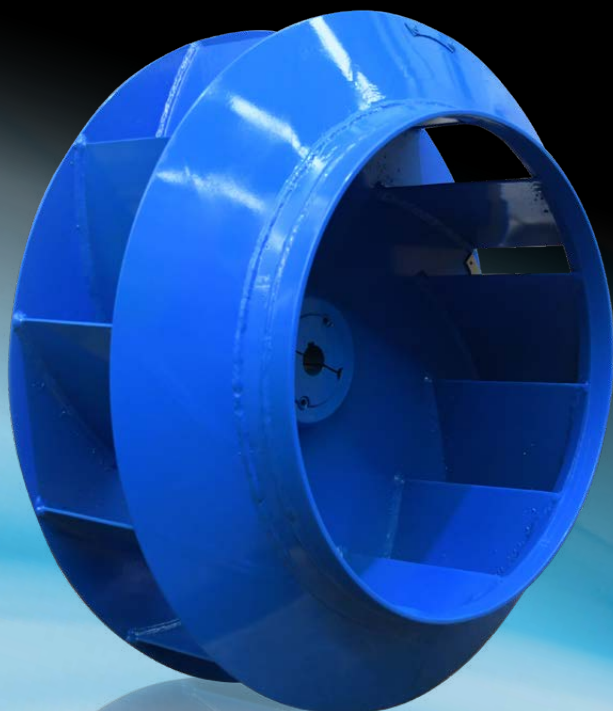
The new range of **Blue Rhino** backward-curved centrifugal fans can save on-site installation and commissioning time, reduce service costs and provide greater reliability. Their innovative design integrates a Variable Speed Drive that eliminates the need for a high maintenance belt & pulley system.



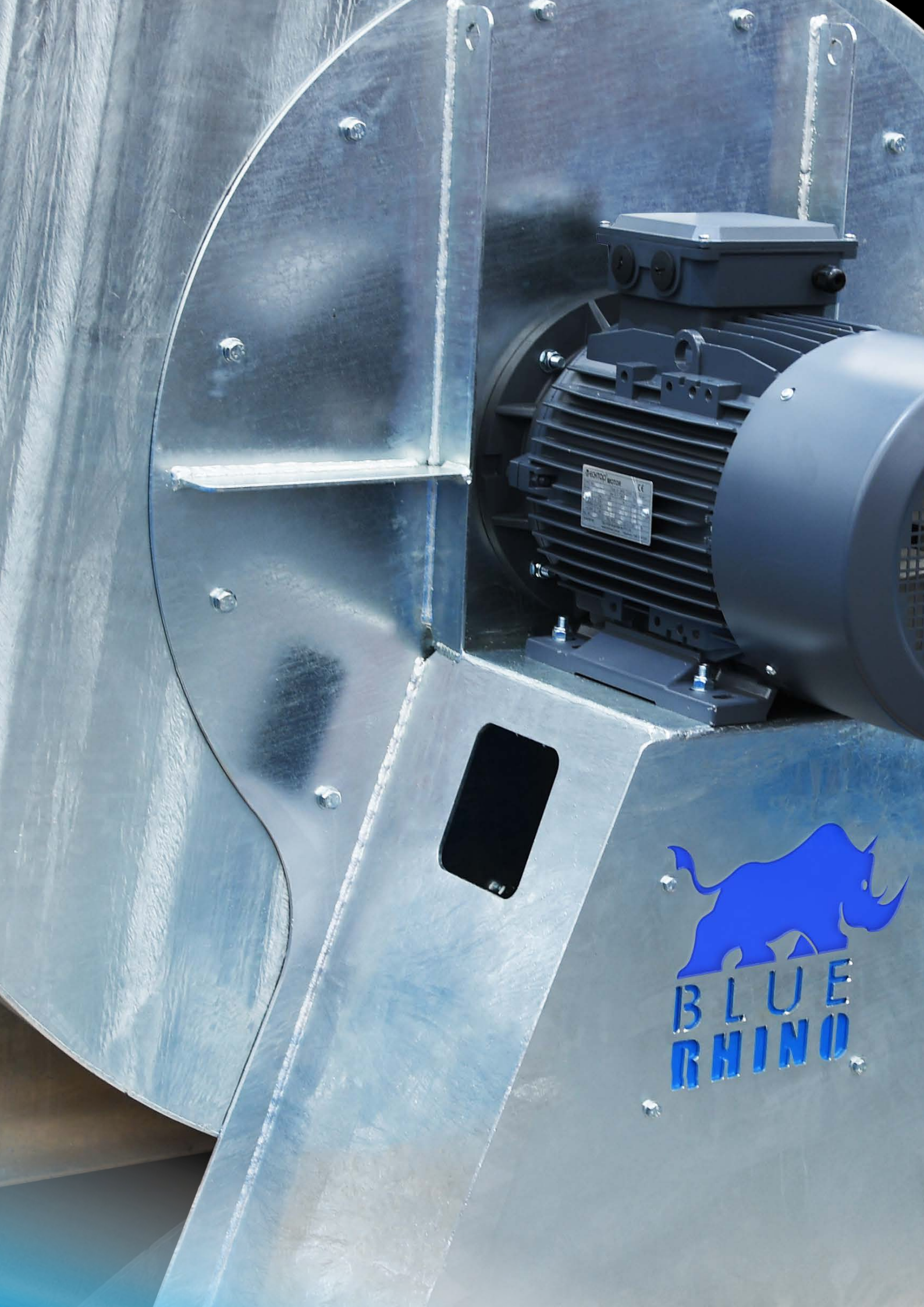
# Saves on-site installation & commissioning time.

Blue Rhino single width, single inlet centrifugal fans include an efficient, backward-curved laminar impeller that produces powerful air flow performance. They feature a heavy duty, fully welded construction which ensures reliability and a long working life. Blue Rhino's direct drive design can be driven by standard or high temperature motors, making them suitable for a large range of supply and exhaust air applications.

Engineered and manufactured by Elta Fans, the innovative Blue Rhino has been optimised for peak performance and enhanced efficiency. Its quality design is the result of an extensive testing and development program that has produced a range which delivers high pressure and low noise output.









# Achieves high pressure and low noise output

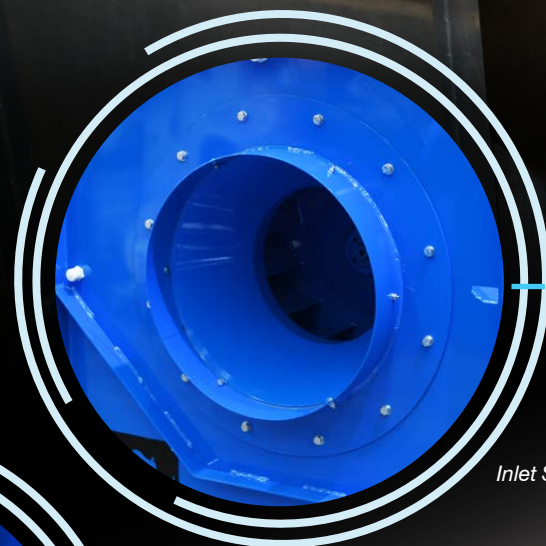
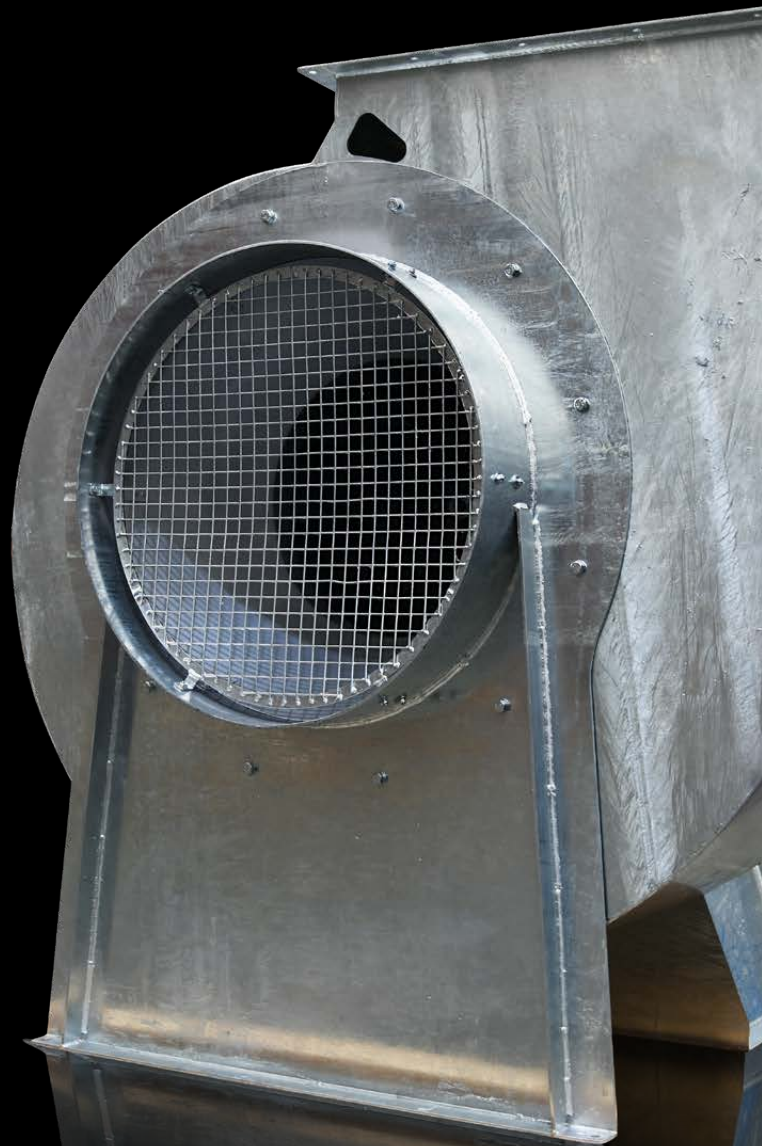
The Blue Rhino range comes standard with a durable hot dip galvanised finish to protect it from harsh environmental conditions such as those found near coastal areas. It is also available in a dynamic looking high gloss blue and black powder coated finish for clean and dry locations. Blue Rhino comes factory fitted with a number of essential features including inlet spigot and discharge flange that make on-site installation quicker and easier. Inspection hatches and drain plugs also come standard which help to simplify service and maintenance.

## Extensive range to suit most HVAC applications

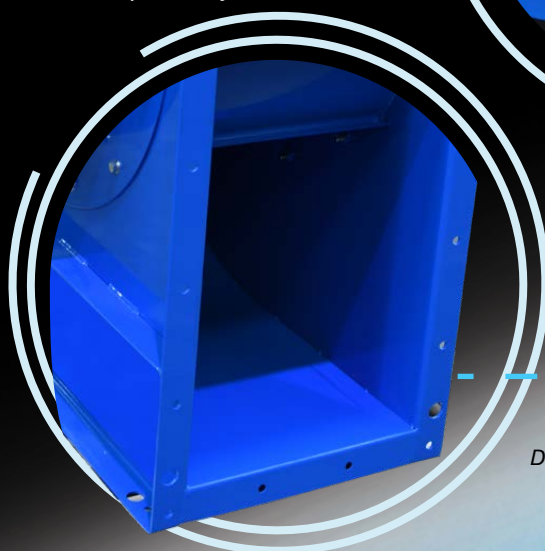
The versatility and features of the Blue Rhino range gives contractors a number of advantages over standard SWSI centrifugal fans and makes them suitable for various types of applications. Blue Rhino is ideal for applications where high air pressures are required such as commercial kitchens and car park ventilation systems. They are also suitable for shopping centres and food halls, as well as health centres, schools and universities where quiet operation is important.

The extensive Blue Rhino range is available in 15 impeller sizes, extending from 12" (305mm) to 44" (1120mm) diameter. Each size also comes with a number of different motor capacities to maximise energy efficiency and meet the application's specified duty point. Smaller sizes come in a box type configuration and larger sizes are designed with a pedestal mounted motor.

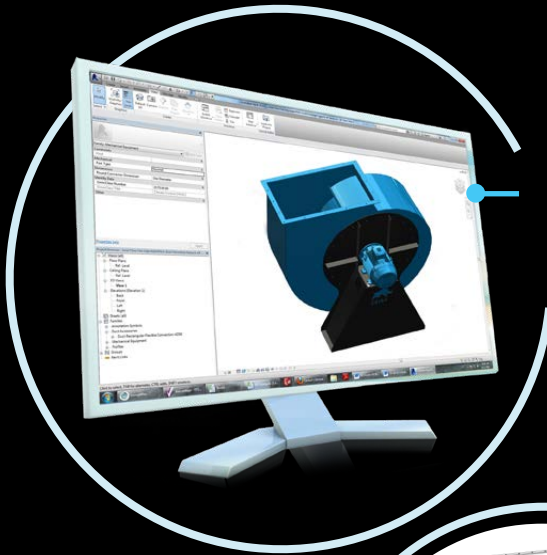
Motor sizes for each Blue Rhino have been selected to deliver the maximum operating speed of the fan. This means that for most applications the fan selected to meet the required duty point will have additional motor capacity, and this can provide more air flow if required by simply adjusting the VSD.



*Inlet Spigot*

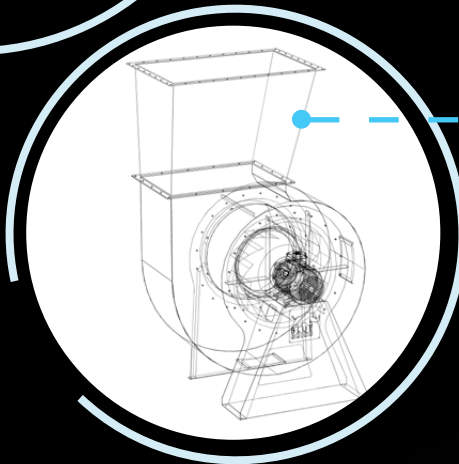


*Discharge Flange*



## Reduced engineering and drafting costs

Three dimensional Revit models are available for all Blue Rhino sizes, significantly reducing project planning and drafting costs.



## Ancillaries available

There are a number of ancillaries available including a discharge easé.

*Pedestal Range (BRP)*



*Box Range (BRB)*





# Preprogrammed VSD for fast & efficient commissioning

Blue Rhino fans integrate state-of-the-art Vacon Variable Speed Drives (VSD) that minimise on-site installation time, provide greater flexibility and help reduce maintenance and service costs. The VSD can be factory preconfigured to suit an extensive range of sensors and specific applications, transforming the Blue Rhino into an energy efficient Demand Control Ventilation system. Vacon VSDs are fast and efficient to commission and feature a built-in EMC filter to remove electromagnetic interference and lower harmonic levels.

Blue Rhino is supplied with either a Vacon 100 HVAC or 100X variable speed drive. The Vacon 100 HVAC is compact in size, energy efficient to run and is suitable for internal environments. The Vacon 100X features a die-cast metal enclosure and an IP66 class protection rating which makes it ideal for external mounting with changing weather conditions.

## Features

- Integrated Variable Speed Drive minimises installation time, provides greater flexibility and helps reduce maintenance and service costs
- VSD can be factory preconfigured to suit applications and create a Demand Control Ventilation system
- Casings and impellers are made of high strength fully welded mild steel
- Comes standard hot dip galvanised or with a durable blue powder coated finish
- Driven by a reliable direct drive motor design
- Factory fitted with inlet spigot and discharge flange
- Comes standard with inspection hatches and drain plugs
- Clockwise impeller rotation is standard, anti-clockwise rotation is available upon request
- Inlet guards and matching flanges available as an option

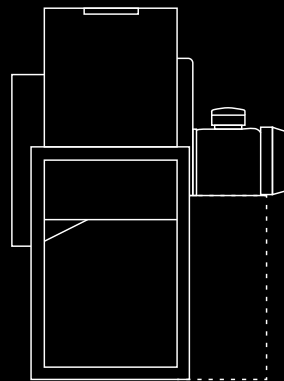


Vacon 100 HVAC



Vacon 100 X

## Drive arrangement



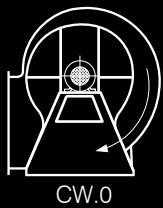
Direct drive motor design. Rotor couples directly onto motor shaft.

Suitable for car park ventilation systems

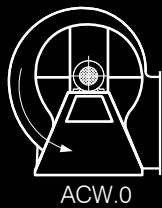


## Direction of Rotation & Discharge Position

### Standard



### Also available\*



\* Longer lead times may  
apply on ACW models

## Box range (BRB)

- Available in impeller diameter sizes from 12" (305mm) to 30" (760mm)
- Can be rotated onsite to 0°, 90° or 180° position to suit installation requirements
- Well suited to retro-fits. Can be supplied in knock down form to fit through standard doorways



## Pedestal range (BRP)

- Available in impeller diameter sizes from 27" (680mm) to 44" (1120mm)
- Available in 0°, 90° or 180° discharge angles



*Suitable for commercial kitchen applications*

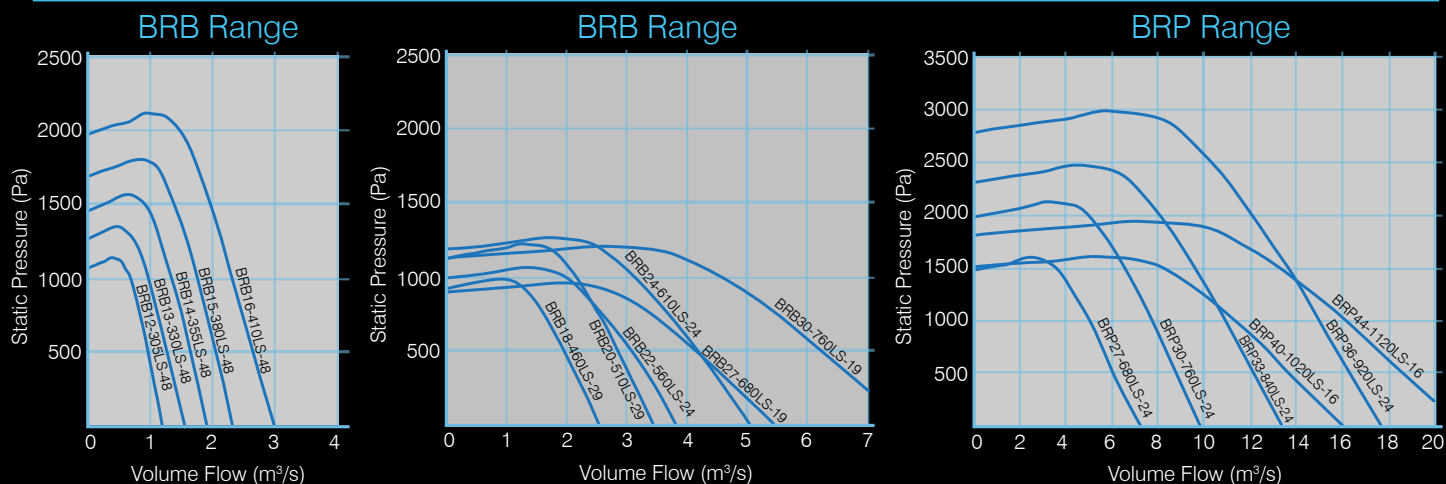


*Suitable for applications that require low noise*

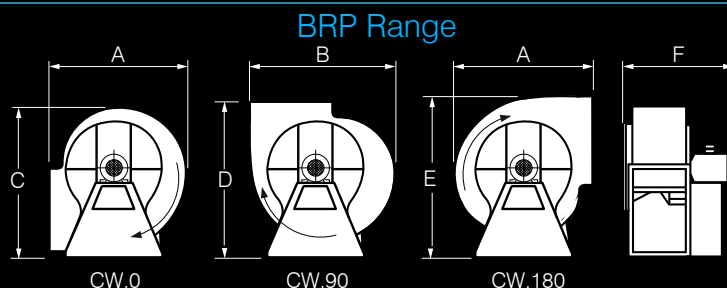
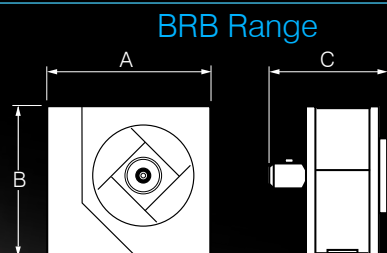




# Performance Curves



## Dimensional Drawings



Model Number	A	B	C	App. Weight kg
BRB12-305LS-24	682	603	564	82
BRB12-305LS-48	682	603	579	87
BRB13-330LS-24	733	651	582	101
BRB13-330LS-48	733	651	622	102
BRB14-355LS-24	784	699	600	111
BRB14-355LS-48	784	699	675	122
BRB15-380LS-24	835	747	640	138
BRB15-380LS-48	835	747	748	146
BRB16-410LS-24	900	809	681	146
BRB16-410LS-48	900	809	836	200
BRB18-460LS-24	1020	908	744	209
BRB18-460LS-29	1020	908	779	210
BRB20-510LS-24	1122	1004	835	242
BRB20-510LS-29	1122	1004	855	262
BRB22-560LS-16	1224	1100	838	267
BRB22-560LS-24	1224	1100	893	296
BRB24-610LS-16	1335	1196	909	321
BRB24-610LS-24	1335	1196	1025	362
BRB27-680LS-16	1473	1330	1069	418
BRB27-680LS-19	1473	1330	1109	440
BRB30-760LS-16	1640	1483	1167	546
BRB30-760LS-19	1640	1483	1224	564

Dimensions in mm

Model Number	A	B	C	D	E	F	App. Weight kg
BRP27-680LS-16	1314	1435	1436	1467	1699	1095	415
BRP27-680LS-24	1314	1435	1436	1467	1699	1175	484
BRP30-760LS-16	1467	1598	1605	1639	1893	1165	531
BRP30-760LS-24	1467	1598	1605	1639	1893	1310	644
BRP33-840LS-12	1621	1776	1774	1811	2102	1215	626
BRP33-840LS-16	1621	1776	1774	1811	2102	1338	716
BRP33-840LS-24	1621	1776	1774	1811	2102	1462	857
BRP36-920LS-12	1773	1938	1943	1983	2295	1353	783
BRP36-920LS-16	1773	1938	1943	1983	2295	1457	871
BRP36-920LS-24	1773	1938	1943	1983	2295	1574	1057
BRP40-1020LS-12	1965	2141	2139	2183	2522	1494	1012
BRP40-1020LS-16	1965	2141	2139	2183	2522	1596	1111
BRP44-1120LS-12	2156	2344	2345	2393	2759	1670	1261
BRP44-1120LS-16	2156	2344	2345	2393	2759	1722	1412

Dimensions in mm

### Elta Fans Malaysia Sdn Bhd (714973-T)

No. 147, Jalan TUDM Kampung  
Baru Subang, 40150 Shah Alam, Selangor West Malaysia, Malaysia

Tel: +603 7846 0340 Fax: +603 7842 1132

Email: info@eltafans.asia

[www.eltafans.asia](http://www.eltafans.asia)

A BRAND WITHIN  ASIA