

# Lingwood benefice profile

The benefice consists of three parishes with five parish churches between them. Four of the churches are active and one is redundant. The largest community is Lingwood, in which the 4 bedroom modern Rectory house is located. The other parishes are primarily rural. We are located south of the A47 about 10 miles east of the vibrant city of Norwich and 10 miles west of Great Yarmouth. Those moving to the area have told us that they find that it is a great place to live with a strong sense of community. We have been working together as a benefice for some years and enjoy sharing our styles of worship through frequent benefice services. This togetherness was enhanced by regularly participating in online services during the recent pandemic.

We hope and pray that you will feel called to apply to be our Rector.



## Welcome

Congregation at the coronation celebration service

Harvest festival at South Burlingham



Lingwood parish congregation



## We hope and pray our new Rector will:

- Nurture the church community, be at ease with all age groups and have sensitive pastoral and listening skills;
- Be comfortable leading and exploring a variety of styles of worship and music;
- Be welcoming to all who form the congregations, including those who are exploring their faith, and be committed to sharing Jesus Christ's love with the wider community;
- Inspire others to use their talents and gifts to serve God in the wider community;
- Help us to walk with God in everything we do including being willing to expand the way that 'church' is perceived and provided in the benefice;
- Be comfortable using IT as a means of communicating with the congregations and the wider community;
- Work with us to develop our strategy for mission in the benefice.





Churchwardens swearing in



Strumpshaw parish congregation

## We can offer the Rector:

- A dedicated Licensed Lay Minister;
- Churchwardens in each parish whose aims include working with the Rector to achieve God's mission for our churches;
- Active PCCs who manage the church buildings;
- Church members who are keen to support the Rector;
- The Rector's approved expenses are paid in full;
- A willingness to consider fresh expressions of faith;
- PCCs who are considering how to develop the churches' responses to the Eco Church initiative;
- Volunteers who lead on fund raising;
- Volunteers who lead our mission for children, particularly in Lingwood;
- Support for international, national and local charities.

# Our church services

We regularly worship together as a benefice as well as separately in our parishes. Benefice services are held at 10.30. In the weeks when there is no benefice service we worship at 9.45 in Lingwood and 11.15 in Strumpshaw or South Burlingham. We normally hold 6 morning services a year at Hassingham.

The services for the weeks when a parish church does not host a Holy Communion service include:

- Lingwood – Common Worship Morning Prayer with a Sunday Club for the children
- South Burlingham – Book of Common Prayer Morning Prayer and All Age services
- Strumpshaw - normally Common Worship Morning Prayer but with occasional Book of Common Prayer services

We also hold occasional Taizé services. Annual services include Christingle in Lingwood and Strumpshaw, messy church for festivals in Lingwood, and a Lights of Love service in Lingwood for the bereaved. We also hold harvest festival services in all four churches, including an outdoor harvest festival at South Burlingham. There are Remembrance services in Lingwood, South Burlingham and Strumpshaw, as well as Ash Wednesday and Maundy Thursday services in Lingwood. There is an annual 'hymns and Pimm's' in Strumpshaw and an annual songs of praise service at Buckenham.

The benefice shares the Covenant Service and the World Day of Prayer with the Methodists.

There is a lay led, weekly, Compline service held by Zoom.

Exploratory conversations are taking place in Strumpshaw about the possible introduction of a lay led 'garden church' which would meet in a parishioner's home.



Harvest at South Burlingham



Christingle at Lingwood



# Achievements and challenges

## Lingwood

Members of the congregation are involved with village activities and invite the community to look positively at the church. The main challenge is to encourage those who used to come to church pre-pandemic and other residents to enjoy worshipping with us.

## Strumpshaw

The congregation has accepted the challenge of raising funds to maintain the life of the church. Members of the congregation are heavily involved in fund raising events that draw people to participate from across the community. The main challenge is to encourage younger people to join and enjoy fully taking part in the life of the church.

## South Burlingham

South Burlingham church is the centre of this small community. The challenge of maintaining and developing the attractive church has brought many people from the community together to undertake successful fund raising. The ongoing challenge is to develop and strengthen a loving relationship with the wider community.



# Our congregations

## Lingwood

The average attendance at a Sunday service during 2023 has been 31 adults and 3 children for a parish service and 53 adults plus 1 child for benefice services. The 2022 Christingle service on Christmas Eve attracted 57 adults and 35 children.

Worshippers range in ages from children to older adults.

## South Burlingham

No services are held in St. Edmund from Christmas to Easter because there is no heating in the church. The average attendance for a parish service was 8, while for a benefice service it was 32.

The candle lit carol service at Christmas 2022 was attended by 82 worshippers.

## Strumpshaw

The average attendance at a Sunday service during 2023 has been 21 worshippers for a parish service and 30 worshippers for a benefice service. The 2022 Christingle service on Christmas Eve attracted 125 worshippers, of whom 44 were children.

The majority of worshippers are over 60.

## Hassingham

There are currently normally about 6 services a year at Hassingham, most of which are benefice services. The average attendance was 27 for benefice services and 15 for parish services.

There were 32 adults and 5 children for the carol service.



Sunday Club at Lingwood



Benefice congregation at Lingwood



## Our church-based activities

- A weekly, morning, session for children aged 0 to 4 is held in a community facility. This is called 'Butterflies' and is normally attended by some 20 adults and 16 children.
- Both Lingwood and Strumpshaw churches are served by festival choirs.
- Contributions for the Norwich foodbank are collected in Lingwood and Strumpshaw churches.
- The Salvation Army's Christmas Present appeal is supported by the congregations at Lingwood and Strumpshaw churches.
- The churches participate in the annual Diocesan cycle ride and walk.
- Each church holds many, varied, fund raising events throughout the year. These include:
  - a soup and snowdrops weekend, a plant sale, bingo evenings and a Christmas fair in Strumpshaw;
  - quiz and chips evenings, spring and Christmas fairs plus a summer fete and harvest supper in Lingwood;
  - a summer fete, an autumn fair and bingo evenings in South Burlingham.
- A weekly Church News is emailed to around 200 addresses. A quarterly Parish News is distributed free of charge to every household in the benefice.



Strumpshaw choir



Butterflies



Lingwood choir

# Safeguarding and external links

- The benefice takes safeguarding very seriously. It has appointed a lay safeguarding officer who has recently completed her leadership training.
- Churchwardens, PCC members and those running Sunday club and Butterflies are in the process of updating their safeguarding training by completing foundation and domestic abuse modules.
- Churchwardens and those running the Sunday Club and Butterflies are DBS checked every three years.

## The Deanery

- Lingwood Benefice is one of five benefices that form the Blofield Deanery.
- There are normally three Deanery synod meetings in a year, which often take the form of training meetings relating to current issues.
- The clergy in the Deanery work closely together.

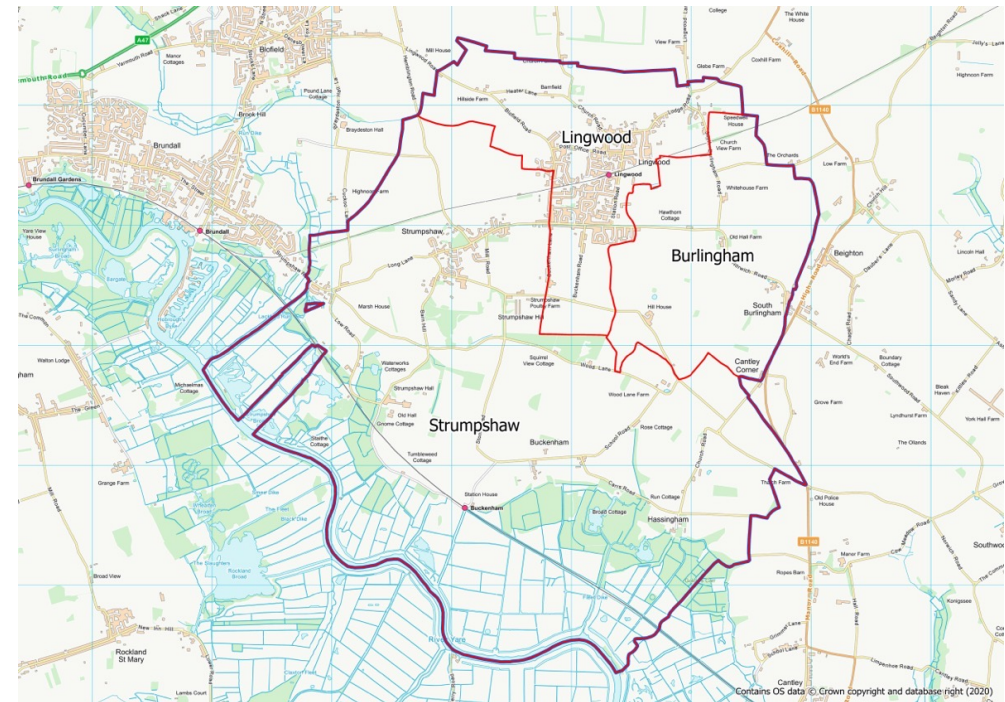
## Other Christian links

- The Methodist congregation meets in Lingwood Village Hall. The main Methodist church is in Acle where there is a full time Minister. Joint services are held with the Methodists from time to time.
- The benefice supports appeals from the Salvation Army who are based in Norwich.



# Our location

- Lingwood civil parish, including South Burlingham, (pop. 2,694 in 2021) is the main settlement. The remainder of the benefice is in the civil parish of Strumpshaw, which includes Buckenham and Hassingham (pop. 694 in 2021). The 2021 census recorded that 28% of the benefice population is over 65.
- The southern part of the benefice is within the Broads national park and is bounded by the River Yare. It contains a celebrated RSPB bird reserve and a steam museum. Geographically the area consists mainly of undulating farmland, a gravel ridge, marshes, small broads and some ancient woodland. The benefice is well served by public footpaths.



# Our church buildings - Lingwood St. Peter

- St. Peters Lingwood dates back to the 13<sup>th</sup> Century.
- The building has been changed many times over the years.
- There is a modern extension on the North side of the church. This includes 2 toilets and a meeting room/kitchen used for coffee after Sunday services. This room is available for hire by the village community.
- There are pew seats in the nave.
- The church is heated by both electrically powered high level heaters and pew heaters.
- The screen between the nave and chancel was removed some time ago as were most of the choir stalls.
- Music is provided by a well maintained organ built in 1911 and a newer electric keyboard.
- There is a small vestry and one chiming bell in the tower.
- The church is provided with a sound system, hearing loop, digital projector and screen.
- The churchyard has limited space for burials. However there is a Parish Council cemetery next to the churchyard.





## Our church buildings - South Burlingham St. Edmund

- St. Edmund is an ancient Norman building with wall paintings and a Tudor pulpit.
- The church is thatched, with a new ridge in local Norfolk sedge completed in May 2023.
- The church has no electricity or water. It is heated with calor gas heaters and lit with oil lamps. These create challenges for which innovative solutions are found including a candle lit carol service.
- Services are held at St. Edmund in the warmer months, from March to Christmas.
- There are links with Illinois U.S.A. A choir from Illinois visits occasionally and the USA community helped raise funds for church repairs.
- The well maintained churchyard is open for burials.



# Our church buildings - Strumpshaw St. Peter

- St. Peters dates back to the 13<sup>th</sup> century and has been changed in many ways over the centuries.
- Notable early features include a double piscina, a 3 level sedilia and a late 15<sup>th</sup> century rood screen.
- The roof was replaced and raised in 2007.
- A contemporary high level stained glass window was donated and installed shortly afterward.
- Work was undertaken in 2018 to alleviate damp which had penetrated the walls.
- The church is heated by under pew and high level electric heaters.
- There is an organ as well as three chimed bells in the tower. A keyboard is also available.
- The church is provided with a hearing loop, digital projector and screen.
- The small vestry is in the base of the tower.
- There is a cold water supply but no toilet.
- Refreshments are occasionally served at the back of the church after benefice services.
- The well maintained churchyard is open for burials.
- The PCC has developed plans to create a social area, a small kitchen and a toilet extension partially using funds from the sale of a previous parish room.
- A small car park is also planned.







# Our church buildings - Hassingham St. Mary

---

- St. Mary's was initially built in the early medieval period.
- The chancel has a higher ceiling than the nave which produces a good acoustic.
- The roof and interior were burnt out in 1970. It was restored the following year.
- The church is now furnished simply with beech chairs and altar.
- Refreshments are normally served at the back of the church after a service.
- There is a small vestry and a cold water supply.
- The heating is by high level electric fires.
- The churchyard, which is maintained as a wildlife area, is open for burials.





## Our church buildings - Buckenham St Nicholas

- St. Nicholas is a redundant church in the care of the Churches Conservation Trust.
- The churchyard is open for burials and is maintained by the Strumpshaw with Hassingham and Buckenham PCC.



# The Rectory

- The Rectory is a modern, detached 4-bedroom house with an attached double garage which was built in the 1980s. It is located to the north-west of Lingwood on Barn Close.
- The ground floor consists of an entrance hall off which lie a study and cloakroom/WC. There is an inner hall leading to a double aspect sitting room with patio doors, a dining room with French doors, a fitted kitchen and a utility room containing an oil-fired boiler. There are several built in cupboards. The oil tank is inside the double garage.
- The first-floor landing gives access to a shower room with toilet and basin, a bathroom with toilet and basin, four bedrooms with built in wardrobes, airing cupboard and built in cupboards. There is also a large storage area. Access to the loft is by foldaway ladder.
- A new kitchen was installed about three years ago. New energy efficient uPVC windows and doors were installed in 2023.
- St. Peters church Lingwood, the shop, post office, schools, railway station and bus stops are within walking distance.



## Church finances including fundraising (I)

- The finances for all four churches are in good shape with the congregations giving generously to the work of the churches. (There are fewer services in each church during the vacancy so the weekly giving may be somewhat diminished this year).
- The regular income is supported by significant fund-raising activities in each parish. Examples from the 2022 accounts are:
  - Lingwood Spring Fair £1,217;
  - Strumpshaw snowdrop weekend £1,533;
  - South Burlingham summer fete £2,297.
- The accounts for each parish include funds for building development or maintenance. Examples from the 2022 accounts include:
  - Lingwood fabric fund £18,848;
  - Strumpshaw fabric fund £85,171;
  - South Burlingham fabric fund £24,420.
- The Strumpshaw fabric fund includes the proceeds from the sale of the Parish Room which are planned to be used towards providing a small kitchen and toilet



Lingwood fete



Wreath making  
South Burlingham



Quiz and chips in Lingwood Village Hall



## Church finances including fundraising (2)

- The benefice has been given transitional funding and a LINC grant towards its parish share by the Diocese for 2023 to 2025. The requested benefice parish share for 2023 amounted to £52,933. The benefice is on course to pay this 'ask' in full.
- The PCCs are conscious that the 'ask' is lower than the full parish share cost and that the formula to allocate this between the parishes has not been considered for many years. They intend to debate these issues in the coming year whilst recognising that the benefice is eligible for limited support from the Archbishop's Council Lowest Income Communities Funding.



Plant sale, Strumpshaw



Annual bike ride  
South Burlingham



Bingo evening for South Burlingham



## Our communities – Lingwood and South Burlingham

### Lingwood

- Lingwood is a village which is slowly growing as planning applications are approved. It is served by a Spar shop which contains the post office. There is also a fish and chip shop, a hairdresser, a nail parlour and a public house.
- Lingwood has a large, modern village hall which accommodates a vibrant community café and a bar. It is built adjacent to a large playing field and Multi Use Games Area.
- A large, well used, open area (the Millennium Green) is equipped with outdoor play equipment for children and adults.
- There is an hourly daytime bus service to Norwich which runs Monday to Saturday. The railway station is on the Great Yarmouth to Norwich line. Trains run approximately hourly in each direction from early morning to late evening, Monday to Saturday. There is a more limited Sunday service.

### South Burlingham

- South Burlingham is a rural parish served by a small farm shop. The community includes a florist, stone mason, a coach company and an alpaca farm.



Lingwood Village Hall & playing field



Hug a mug community café

# Our communities – Strumpshaw, (including Hassingham and Buckenham) & local charities

## Strumpshaw, including Hassingham and Buckenham

- Strumpshaw is served by a public house, a wine merchant, a car repair garage, an outdoor wedding venue and a specialist car conversion business. There is also a community recycling centre. Strumpshaw is home to a RSPB reserve and a steam museum, which is open on many weekends. The steam museum hosts regular weekend events some of which attract a large number of steam traction engine enthusiasts with their steam engines.
- Strumpshaw has a 70 seater modern community hall.
- The bus from Lingwood to Norwich serves Strumpshaw.

## Local charities

- Lingwood and Strumpshaw are served by local charities whose rôles include the relief of hardship, helping young people in Lingwood and providing support for community organisations in Strumpshaw.
- The Buckenham Ancient Woodland Trust has been formed to conserve this important woodland.





# Schools

- Lingwood Primary Academy. The school is part of the Heart Education Trust. It is dedicated to ensuring children learn and grow into lifelong learners and have experienced a broad and balanced curriculum. The Head Teacher has said “We are a local Primary school with 237 pupils. We are single form entry, have a Nursery and an SRB unit on site. We would love to continue links with the new Rector. The church has on many occasions invited our children for class trips and Christmas services.”
- Compass short stay school. This school provides a high-quality education for pupils in year groups Reception to Year 11 who have no mainstream school place.
- There is a 11 to 16 Secondary Academy school in Acle and a 11 to 18 secondary school and sixth form at Thorpe St. Andrew on the east of Norwich. Transport is provided for pupils to both schools.
- The East Norfolk Sixth Form College is in the Gorleston area of Great Yarmouth.
- There is a wide range of schools for all ages in Norwich.



# Community groups and clubs

- 1<sup>st</sup> Lingwood and Strumpshaw Air Scouts which has Beaver, Cubs and Scouts sections meets in the scout hut in Strumpshaw.
- 1<sup>st</sup> Strumpshaw Brownies meets at Strumpshaw Community Hall.
- A toddler's group and a craft club for school age children meet at Lingwood Village Hall.
- Patchwork classes and an art club meet at Lingwood Village Hall. There are exercise and art classes at Strumpshaw Community Hall. A 'weaving room' craft group meets in Strumpshaw.
- Lingwood Leg-its running group is based at Lingwood Village Hall. A monthly walking group is also based there.
- A knitting group, a craft and chat group and a jigsaw library take place in Lingwood.
- Strumpshaw Tuesday Coffee Break: a social group that meets socially on Tuesday mornings. It raises money for local charities and also acts as a collecting point for the Norwich Food Bank.
- There is a dog obedience club.
- There are three riding and livery stables.
- The East Norfolk petanque club meets at Lingwood village hall and the South Walsham football club plays there.
- The Yare Valley Rotary Club meets at Strumpshaw Community Hall.
- The Blofield and District Conservation Group maintains many of the open areas in the benefice.



## Congregation quotations

"I'm 9 almost 10 and my name is Joseph. I would like our Rector to be kind to everyone."

"Our Rector should be comfortable and happy in our rural environment."

"I'd like to see a new Rector who has the ability to continue God's work in our community through fellowship within our benefice and our wider community."

"Must be willing to embrace both Common Worship and BCP forms of worship."

"Be able to lead us into showing and sharing Jesus' love in our benefice."

"The Rector should be a visible and approachable member of the community."

"Someone who will love the local people as much as we do."

"I would like the new Rector to be welcoming to all in the church, younger or older, as well as supportive of the local community. A wise and gentle person."

"Be sensitive to the past worship of the congregation as well as being willing and able to lead and inspire us all to a growing and faithful future."

"The characteristics I would like to see in a new Rector are: to have a presence; to be innovative; to be compassionate and to be approachable."



We hope that you have enjoyed reading our profile



Strumpshaw PCC



Lingwood PCC



Our organist



Strumpshaw steam rally