

DROP IN SESSIONS

Supporting children through challenging times

Our new drop-in sessions in the Butterfly Lounge give you flexible access to our Children's Service team.

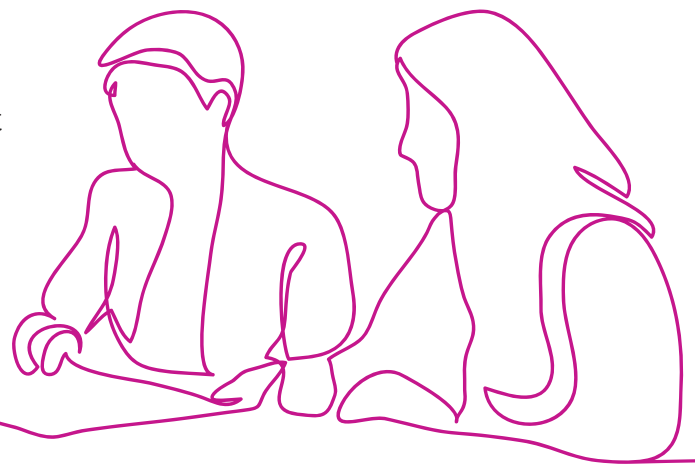
With their guidance, you can help support your child/children as they:

- experience living with a loved one who has a life limiting illness
- journey through the grief of losing someone they love.

Communication is key for all families but especially as they navigate new emotions around illness, dying and loss.

How we can help

- Our friendly team can give advice on how to support children through difficult times as well as encourage positive memory making.
- We can also offer face-to-face emotional support.



Visit www.birminghamhospice.org.uk/childrens-service for latest drop in session dates and times. To find out more about how we can support you in general, please contact the team or take a free copy of the Ground Feels Wobbly (copies by the bookshelf in Butterfly Lounge).

E: childrenservice@birminghamhospice.org.uk

T: 0121 752 8753