



**RESONANCE**

[WWW.RESONANCE-CAPITAL.EU](http://WWW.RESONANCE-CAPITAL.EU)

# Penny Stocks

**23 – 27 October 2017**

## **Trading report**

5% of the capital



## Shares of PLPM - PLANET PAYMENT, INC., entry price 3.95 - exit price 3.70

Shares of PLANET PAYMENT INC. tried to breakthrough the resistance level over the past weeks. After another attempt of breakthrough, long correction began part of which we caught. The entrance to the market was after the breakthrough of the support level at a price of 3.95. Stop-loss we placed at the high of the previous candle and the take-profit was placed at the next support level. We closed the position on time because then there was a small correction. As a result, we earned 5.68% from this transaction.



Instrument	Type	Open price	Closing price	Profit in %
PSDO	sell	3.95	3.70	+ 5.68%



## Shares of NSU - NEVSUN RESOURCES, entry price 2.93 - exit price 2.60

Our next deal in the Penny Stock market was on the shares of NEVSUN RESOURCES. There were two signals at once, so the probability of success was extremely high. An inside bar was formed, we placed pending orders at the borders of the candle. Sell order worked out first, thus we got a short position. So, the stop-loss was higher than the high of the signal candle. Takeprofit we placed at the support level, which has been holding for several weeks. After the opening of the position, there was a sharp price down and soon the deal was closed at take-profit.

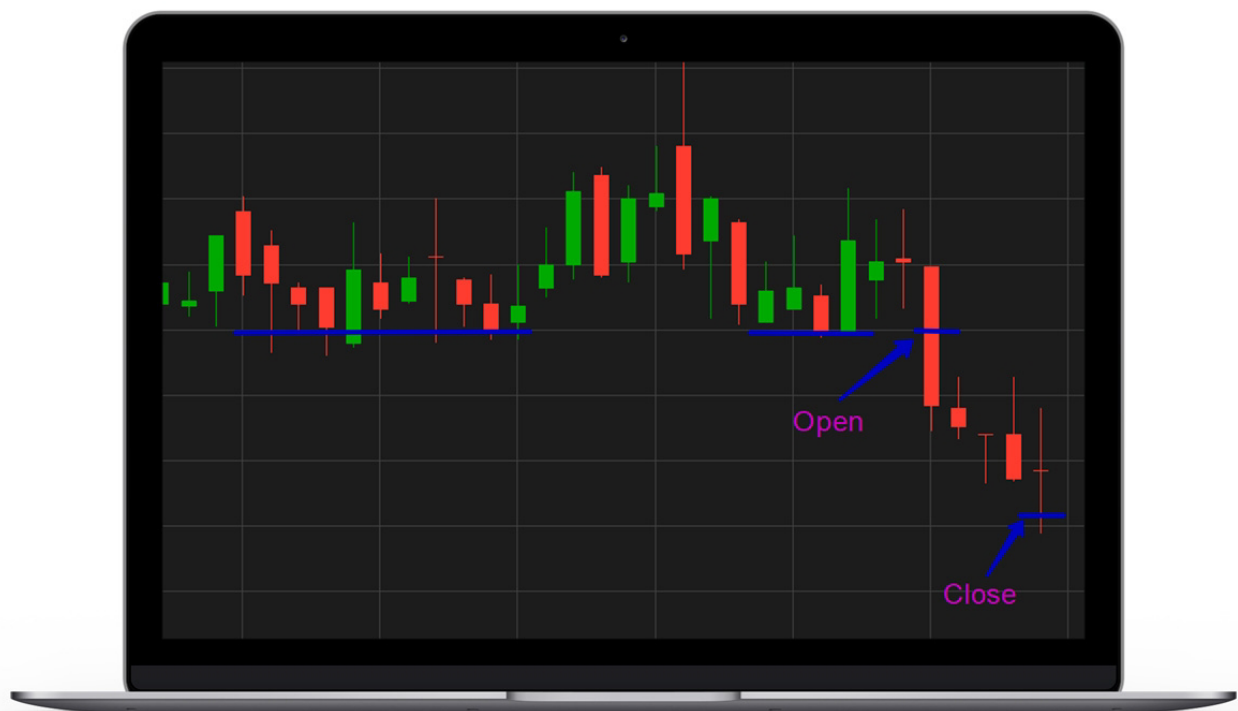


Instrument	Type	Open price	Closing price	Profit in %
NSU	sell	2.93	2.60	+ 6.83%



## Shares of WBAI - 500.COM LTD, entry price 10.95 - exit price 10.28

The most profitable deal this week in the Penny Stock market was a deal on 500.COM LTD. The price of the shares of this company has been trying for quite a long time to go below the \$11 per piece and we were lucky to catch this breakthrough. We saw how the price broke this level on Monday. We opened a short position. Stop-loss placed at a high of a signal candle, the take-profit was set at the previous resistance level, which was broken and automatically became a support level. During the week there was news on the company, but they did not significantly affect our deal. The deal was closed with a profit of 15.32%.



Instrument	Type	Open price	Closing price	Profit in %
WBAI	sell	10.95	10.28	+ 15.32%



## Shares of GILT-GILAT SATELLITE NETWORKS LTD, entry price 7.08 - exit price 7.30

Our next deal, unfortunately, turned out to be bad. So, selecting shares for trading, we came across the company GILAT SATELLITE NETWORKS LTD. The price was at the high of several months and we were expecting a rebound from the level that we expected to catch. At this level, a doubtful pin bar appeared. We opened a short position, the stop-loss was placed above the high of the signal candle. The next day the price jumped up and hit us.



Instrument	Type	Open price	Closing price	Profit in %
GILT	sell	7.08	7.30	- 5.57%





## Shares of SHLD - SEARS HOLDING CORP., entry price 6.30 - exit price 5.85

Another good deal was made on the shares of SEARS HOLDING CORP. The shares of this company formed a downward channel. It was here for a long time, so we expected to use this. When the price approached the upper border, we opened a short position. Also, a pin bar formed there, which confirmed our expectations. Stop-loss was placed at the high of a pin bar, we took the take-profit in the region of the lower border of the channel. The deal was closed in positive territory and brought us 10%, but the price never reached the target.



Instrument	Type	Open price	Closing price	Profit in %
SHLD	sell	6.30	5.85	+ 10.24%



## Summary of the week

The summary of the week is modest than the previous one. But still, the result is good - 32.5%. There were two excellent deals, which brought us a good profit. Our choice of shares for trading and the strategy for entry and exit shows stable and profitable results. Over time, the results will only get better.

Instrument	Type	Open price	Closing price	Profit in %
PLPM	sell	3.95	3.70	+ 5.68%
NSU	sell	2.93	2.60	+ 6.83%
WBAI	sell	10.95	10.28	+ 15.32%
GILT	buy	7.08	7.30	- 5.57%
SHLD	sell	6.30	5.85	+ 10.24%
Total profit from 23.10 – 27.10				<b>+32.5%</b>