



RESONANCE

WWW.RESONANCE-CAPITAL.EU

IPO

23 – 27 October 2017

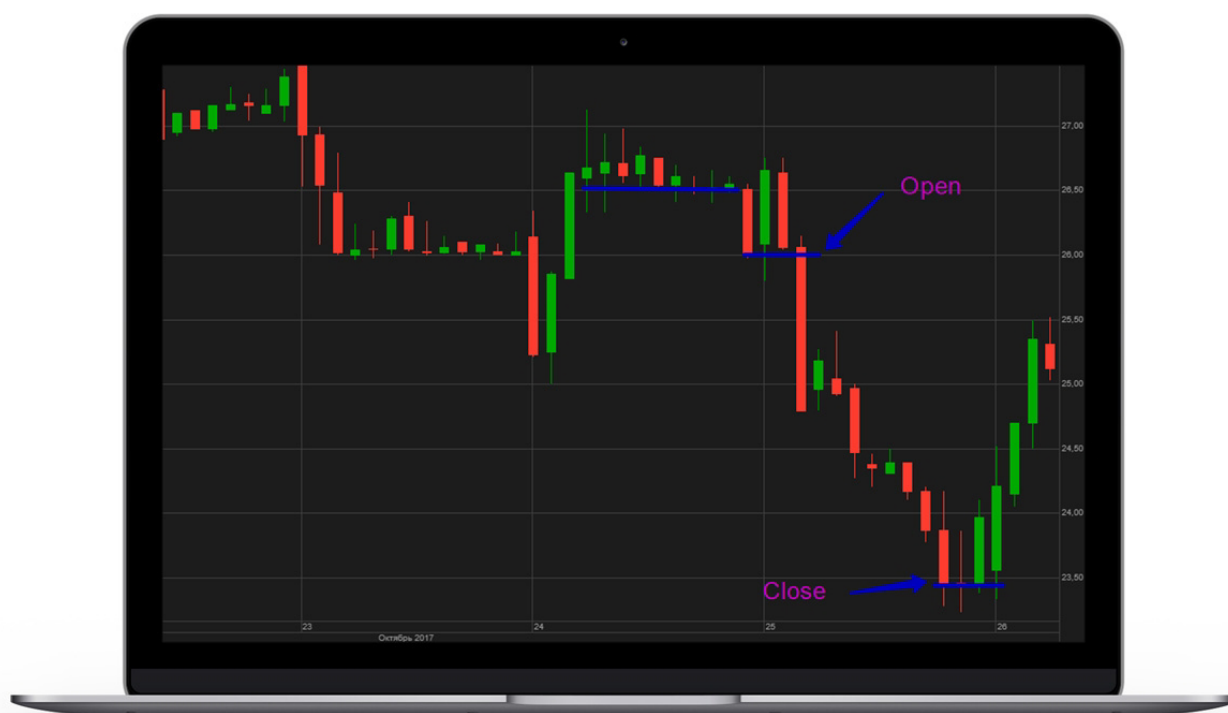
Trading report

5% of the capital



23.10 - 27.10 October

On Wednesday, a good deal was made on shares of the young company RYB EDUCATION INC. Public trading of shares began on September 27 this year. At the moment, the shares have a downward trend. We watched almost the entire Tuesday an attempt to go below the support level. On Tuesday, the bears still broke it. We opened a short position. Stop-loss was set higher than the high of previous candle, we did not set the take-profit since the shares only recently began to be listed and have not yet generated a strong support level. We watched the movement and closed the deal at the first hint of correction, thereby getting an excellent profit.



Instrument	Type	Open price	Closing price	Profit in %
RYB	sell	25.95	23.50	+ 16.67%



23.10 - 27.10 October

On Thursday, we drew attention to the shares of CARGURUS INC. Shares of this company appeared on the stock exchange since October 12 this year. The price opened with the gap below the local support level, but almost immediately ran into the next level, which has been holding for several days already, we also noticed that the price only touched the level a bit and immediately turned around, it became obvious that the stock would fill the gap. We opened a long position, the stop-loss was placed slightly below the support level. Initially, we expected that the shares would just fill the gap. But when the price approached the level of the supposed take-profit, there was an impact, we did not close the position and decided to wait, and as a result, we got an amazing profit.

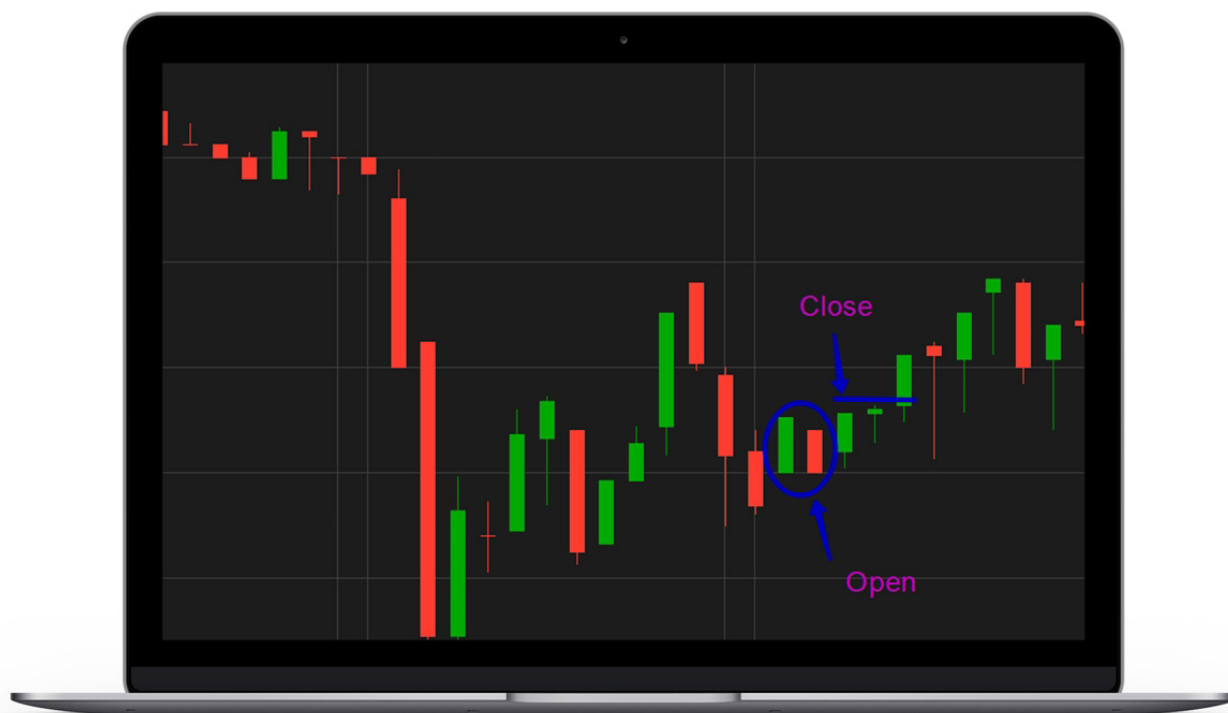


Instrument	Type	Open price	Closing price	Profit in %
CARG	buy	28.10	30.40	+ 14.87



23.10 - 27.10 October

Another deal was on Thursday on the shares of OASIS MIDSTREAM PARTNERS LP. Unfortunately, it was closed at the stop-loss. The inside bar pattern was formed, we placed pending orders, the first sell order worked out. And we were in a short position. We placed a stop-loss a little higher than the high of the signal candle. Take-profit was at the low of the previous day, after some time the deal closed with a small loss.



Instrument	Type	Open price	Closing price	Profit in %
OMP	sell	16.04	16.19	- 1.2%



23.10 - 27.10 October

On Friday, our attention was attracted by shares of SWITCH INC. In the evening on Thursday, they went down and ran into a strong support level. On Friday, we drew attention to attempts to growth, we opened a long position. Also, there was an inside bar pattern, which also confirmed our thoughts about the opening of the position. We placed the stop-loss at the local low. Takeprofit was set at a high of several days. The deal closed according to the plan, thereby bringing a good profit.



Instrument	Type	Open price	Closing price	Profit in %
SWCH	buy	18.65	18.98	+ 3,21%



Summary of the week

It turned out an interesting week in the IPO market. Two deals brought us a very big profit, the third was not bad, and the only one brought a small loss, which was covered by profit. Do not forget that we are increasing risks by trading with shares of recently entered the market companies but this is what makes it possible to get such profit from several transactions.

Date	Instrument	Type	Open price	Closing price	Profit in %
25.10	RYB	sell	25.95	23.50	+ 16.67%
26.10	CARG	buy	28.10	30.40	+ 14.87%
26.10	OMP	sell	16.04	16.19	- 1.2%
27.10	SWCH	buy	18.65	18.98	+ 3.21%
Total Profit from 23.10 - 27.10 +33.55%					