

11th September 2020

Feeling poorly?

A really big thank you to all the parents for contacting us about children who have colds, temperatures, poorly tummies and other various illnesses. Unfortunately, it is quite difficult for everyone to determine whether they are signs of COVID or not and I think the precautionary measure taking place at the moment is our safest option for the school community. Children have just returned to school after the summer holidays and for some, quite a long period of being at home. Now we are all being exposed to general bugs which are always around at this time of year. The guidance is lengthy and sometimes quite confusing to follow. Guidance from the government is regularly updated and sometimes social media and the news also adds to the confusion.

We are following the government guidance - these are our main sources:

<https://www.nhs.uk/conditions/coronavirus-covid-19/>

<https://www.gov.uk/government/publications/actions-for-schools-during-the-coronavirus-outbreak>

<https://www.gov.uk/government/collections/guidance-for-schools-coronavirus-covid-19>

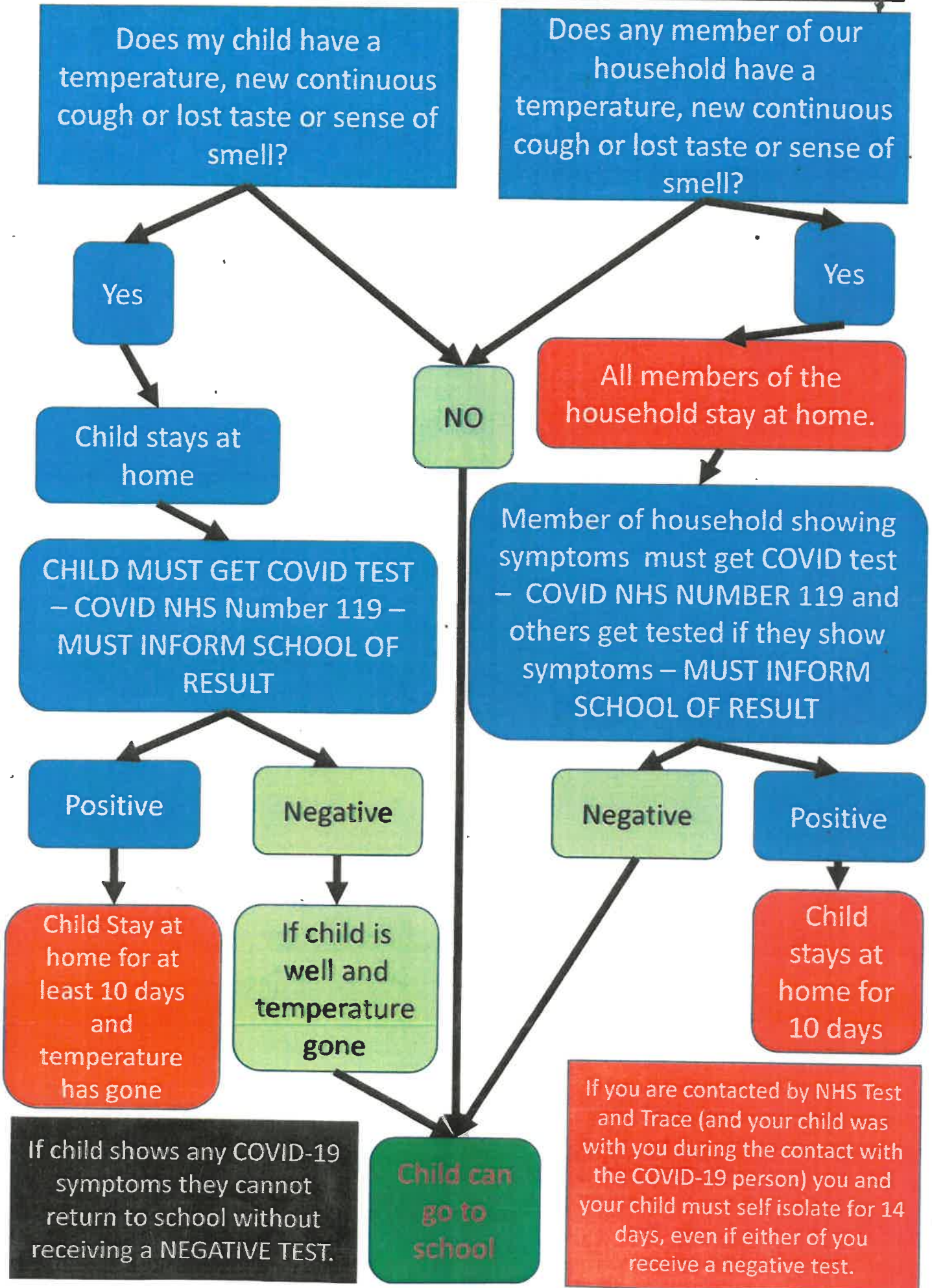
We have been finding the flow chart and information below, very helpful.

As always, if in doubt or you have any concerns, please contact us at school.

Very many thanks,

Mrs Nicholson (Acting Headteacher)

COVID SYMPTOMS AT HOME FLOW CHART



Covid-19 related staff/pupil absence
A quick reference guide for parents/staff

What to do if...	Action needed	Return to school when...
<p>My child has Covid-19 symptoms:</p> <ul style="list-style-type: none"> • HIGH TEMPERATURE – this means they feel hot to touch on chest or back • A NEW CONTINUOUS COUGH – this means coughing a lot for more than an hour or 3 or more coughing episodes in 24hrs • A LOSS OR CHANGE TO YOUR SENSE OF SMELL OR TASTE – this means they've noticed they cannot smell or taste anything. 	<p>DO NOT COME TO SCHOOL Contact school to inform us. Self-isolate the WHOLE household while getting the symptomatic person tested. Get a test. INFORM SCHOOL OF THE TEST RESULT</p>	<p>The test comes back negative and if the fever is gone.</p> <p>Children can return with a cough after a negative test as this can last for some time.</p>
<p>My child tests positive for Covid-19</p>	<p>DO NOT COME TO SCHOOL Contact school to inform us. Quarantine the household for 14 days and the patient for a minimum of ten days.</p>	<p>Ten days has passed and they feel better but as household has to quarantine for 14 days they possibly can't return until someone is able to bring them. Can return with a cough after minimum of 10 days as this symptom can last for several weeks.</p>
<p>My child tests negative</p>	<p>CONTACT THE SCHOOL Discuss when your child can come back to school (same day/next day).</p>	<p>The test comes back negative.</p>
<p>My child is ill with symptoms not linked to Covid-19</p>	<p>FOLLOW USUAL SCHOOL ABSENCE POLICY PROCEDURE</p>	<p>For sickness/diarrhoea MUST be clear for 48 hours before returning to school.</p>
<p>Someone in my household has Covid-19 symptoms</p>	<p>DO NOT COME TO SCHOOL Contact school. Self-isolate the whole household until person with symptoms tests negative.</p>	<p>When person with symptom gets a negative test.</p>
<p>Someone in my household tests positive for Covid-19</p>	<p>DO NOT COME TO SCHOOL Contact school. Pupil isolates at home for 14 days.</p>	<p>The child has completed 14 days isolation at home.</p>
<p>NHS test & trace has identified my child has been in close contact of someone with a confirmed case of Covid-19</p>	<p>DO NOT COME TO SCHOOL Contact school. Pupil isolates at home for 14 days.</p>	<p>The child has completed 14 days isolation at home.</p>
<p>We/my child has travelled and has to self-isolate as part of a period of quarantine</p>	<p>Please do not travel if quarantine requirements will mean a child missing school as an unauthorised absence. Pupil isolates for 14 days from return date. Unauthorised absence fine may be issued.</p>	<p>The quarantine period of 14 days has been completed.</p>
<p>We have received medical advice that my child must resume shielding</p>	<p>DO NOT COME TO SCHOOL Contact school. Shield until you are informed that restrictions are lifted and shielding is paused again. Liaise with school re. home learning.</p>	<p>You are informed that shielding advice has been lifted and your child can return to school</p>
<p>My child's bubble is closed due to a confirmed case of Covid-19 in school.</p>	<p>DO NOT COME TO SCHOOL Support your child at home with remote learning for 14 days. Siblings can come to school if their bubbles remains open. Family members do not need to isolate.</p>	<p>School will inform you when the bubble will be reopened.</p>