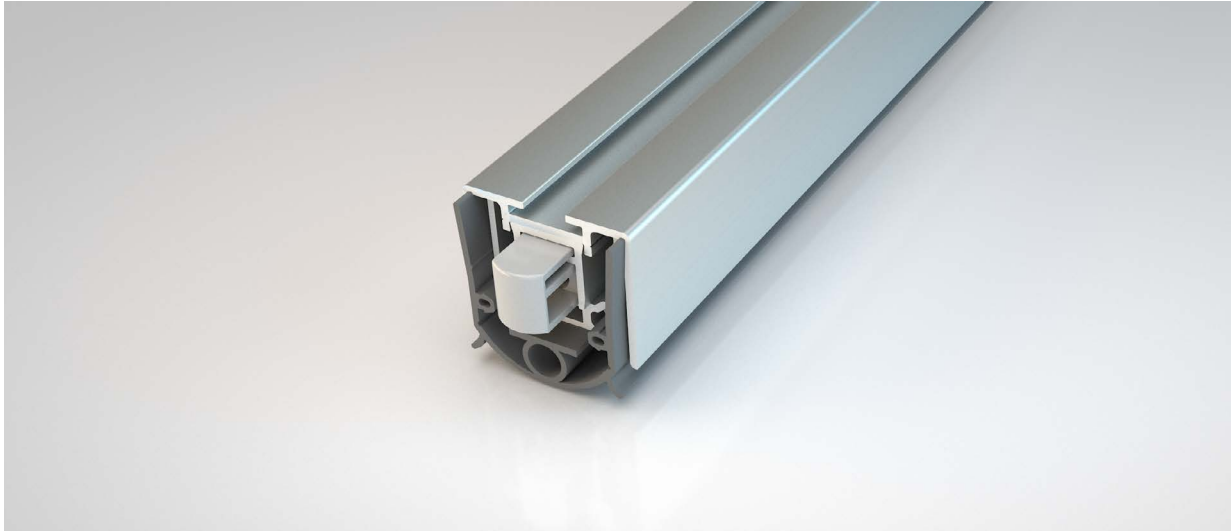


## RAINSTOP L24/20 WS

ATHMER



### Application

Bottom edge of external timber, metal and composite doorsets

### Fixing

Rebated, held in place with angle brackets

### Performance

Resistance to driving rain (classification 7A) in accordance with EN 12208  
Resistance to wind load (classification C2/Bs) in accordance with EN 12210  
Barrier free, no threshold required  
Resistance to air permeability (Classification 4) in accordance with EN 12207  
Sound reduction up to 54dB

### Material

Aluminium, Silicone gasket

### Standard lengths (mm)

750, 900, 1050, 1200

### Minimum / Maximum length (mm)

230 / 2000

### Gap coverage (mm)

16

### Actuation

Single

### Cutback (mm)

150

### Colour

Mill finish, Grey gasket **Order codes**

**1-955- + Length (4 digits)** eg. 1-932-0750 (750mm)

### Dimensions

