

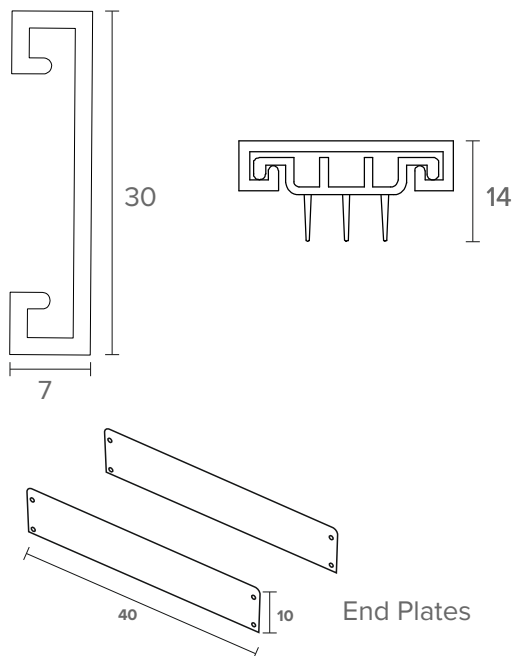
NOR850 Fitting Instructions

Tools



Includes:
1 x NOR850 seal
1 x Insert
2 x End plates
Fixing screws & pins

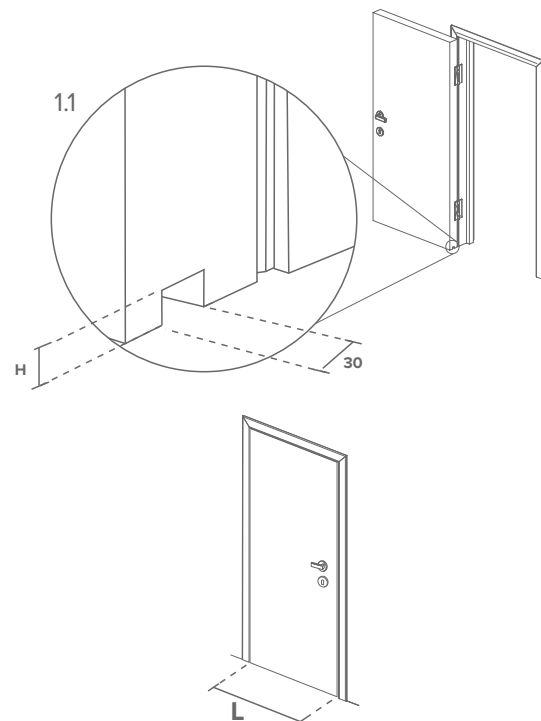
All dimensions in mm



End Plates

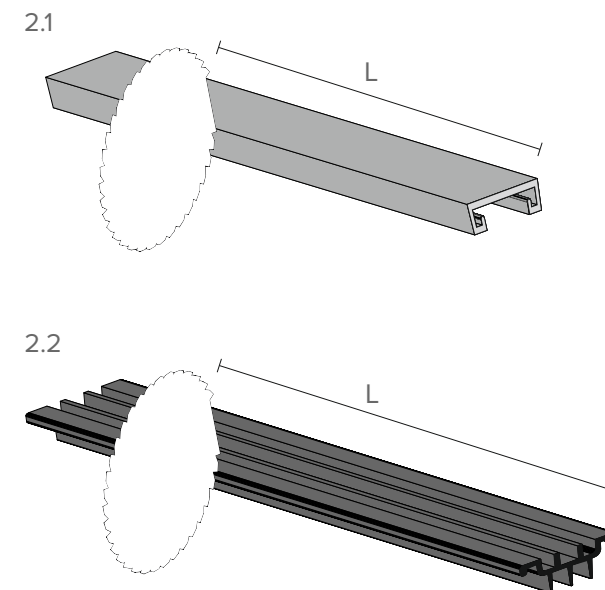
Lengths	CODE
1000	NOR850-1000
1500	NOR850-1500

1



1.1 Remove the door from its hinges. lay on its side and restrain firmly. It is recommended that the NOR850 carrier is recessed into the bottom edge of the door to a depth(H) that is necessary to provide the insert blades to overlap the threshold by 1.5/2.5mm

2

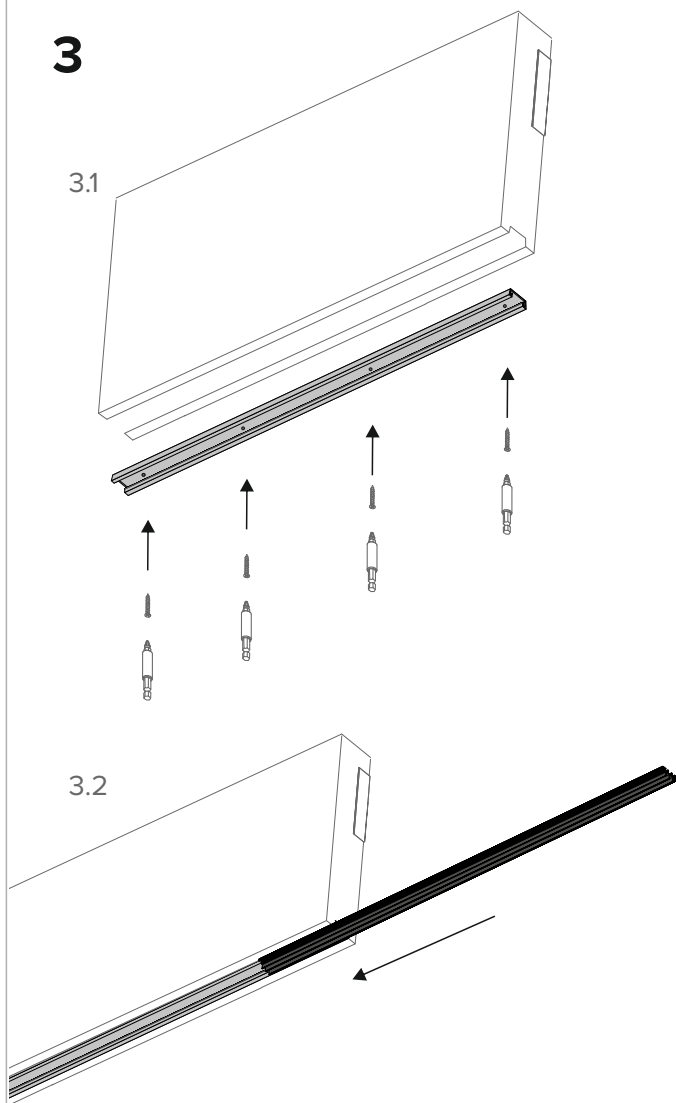


2.1 measure and cut the aluminium holder to suit door width (L).

2.2 Cut the insert to the same size of the holder.

NOR850 Fitting Instructions

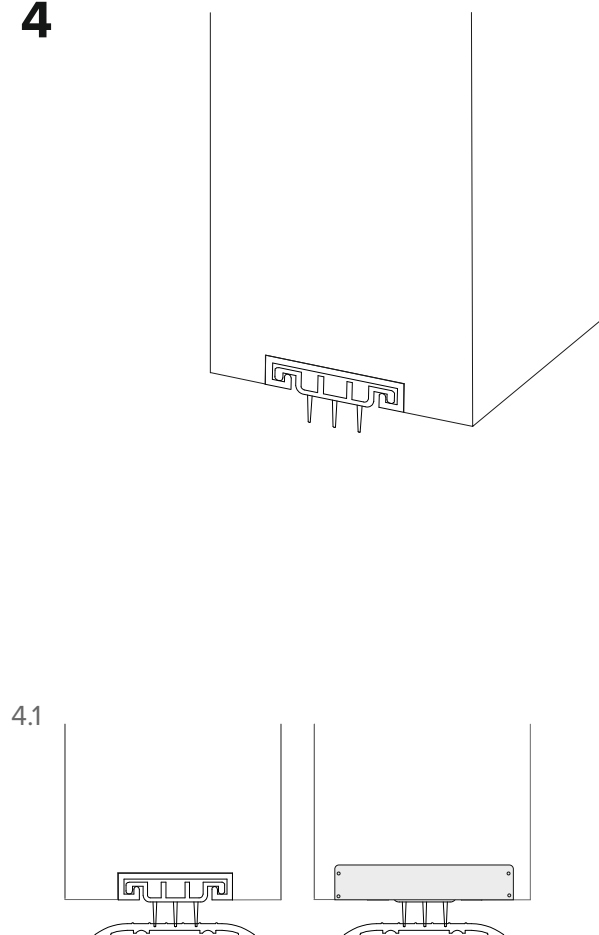
3



3.1 Fix the aluminium holder in place using screws provided.

3.2 Slide the insert into place.

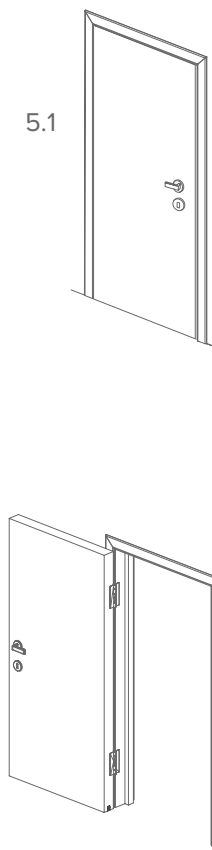
4



4.1

4.1 Fix the end plates using the pins provided.

5



5.1 Open and close door to test seal.
Ensure that the installation of this product does not impede the opening or closing of door.

For copy fitting instructions visit norsound.com/fitting