

## CONCEALED THERMOSTATIC SEQUENTIAL SHOWER VALVE - TOP OR BOTTOM OUTLET



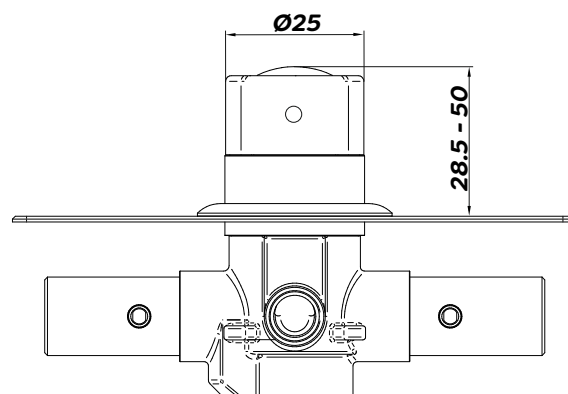
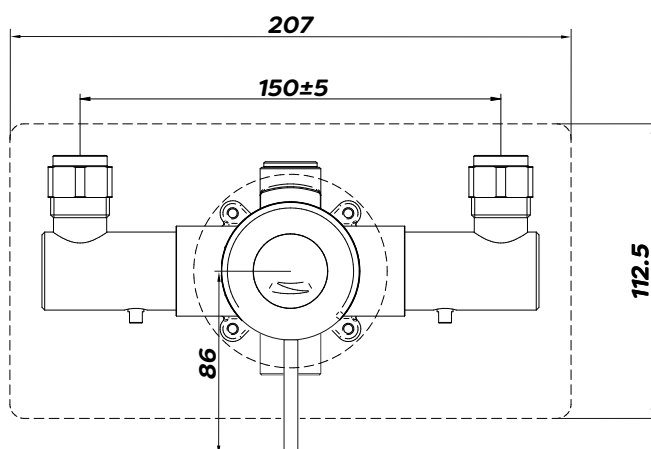
<b>Product Code</b>	<b>SHWRPKSPA6</b>
<b>Weight (Kg)</b>	2.3
<b>Finish</b>	Chrome
<b>Max Inlet Pressure (Static)</b>	10 Bar
<b>Min Operating Pressure (dynamic)</b>	0.2 Bar

### Key features:

- Factory Pre-set Temperature of 43°C with max temp stop
- Temperature stability of +/-2°C
- 15mm compression inlet connection
- 15mm compression outlet connection
- Suitable for unvented, pressurised, gravity and combination systems
- 10°C temperature differential required to achieve hot or cold failsafe
- Max Inlet Temperature of 85°C

### Description:

Fitted with a long lever to aid users with limited dexterity, this valve features an inclusive and design that benefits from anti-scald technology.



All dimensions are approximate and subject to normal ceramic variation. Although every effort is made not to change the above product specification, Lecico reserve the right to do so without prior notification if necessary.  
\*Against manufacturers defects. Full information on guarantees available upon request.