

# Atlas

## CONCEALED SHOWER DOC M PACK (GREY RAILS)



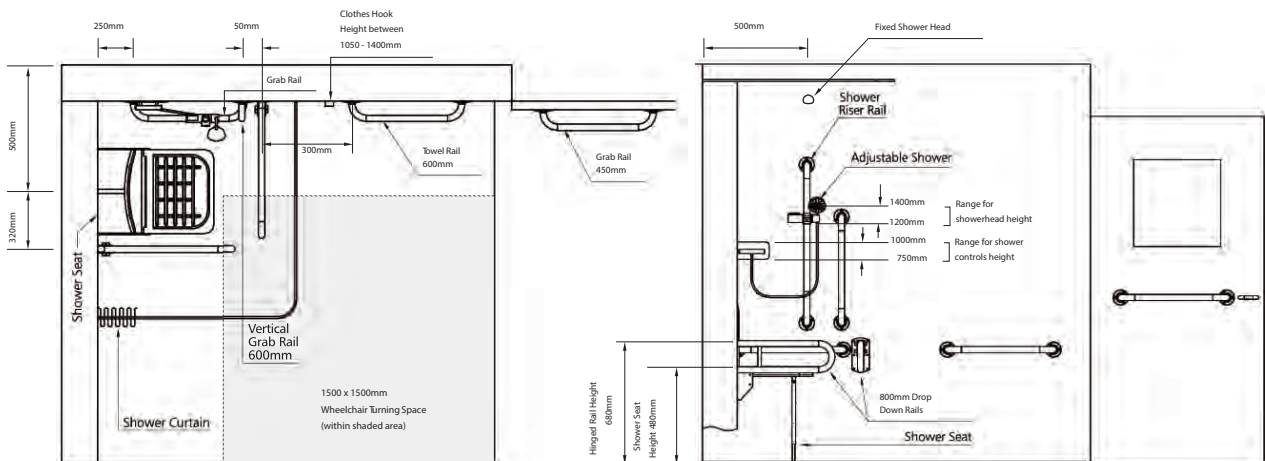
<b>Product Code</b>	<b>SHWRPKCONGR</b>
<b>Weight (Kg)</b>	28.5
<b>Material</b>	Mixed Plastics and Metals
<b>TMV3 Approved</b>	Yes
<b>Valve Operating Pressure</b>	0.2 to 5 bar
<b>Grab Rails</b>	Concealed Grey Rails
<b>RAL Colour</b>	Grey - 7005
<b>LRV</b>	18.52

### Included in Pack:

- Concealed Thermostatic Sequential shower valve
- Concealed two way diverter valve
- Vandal resistant fixed shower head & feed pipe
- Riser kit with shower head and hose
- 2 Hinged support rails
- 3 60cm Grab rails, 1 45cm grab rail & 1 robe hook
- Slider bracket
- Shower curtain rail
- 2 Weighted shower curtains
- DocM padded shower seat with legs

### Description:

- The Lecico shower pack contains all components required to ensure compliance to DocM and BS8300:2009.
- Anti-vandal fixed shower head is WRAS approved
- Factory set at 43°C to prevent scalding
- TMV3 scheme approved
- Complies with HTM64
- WRAS approved



# Atlas

All dimensions are approximate and subject to normal variation. Although every effort is made not to change the above product specification, Lecico reserve the right to do so without prior notification if necessary. All guarantees are against manufacturers defects. Full information on guarantees available upon request.