

RAMIRA ROUND THERMO BATH AND SHOWER MIXER SYSTEM CHROME



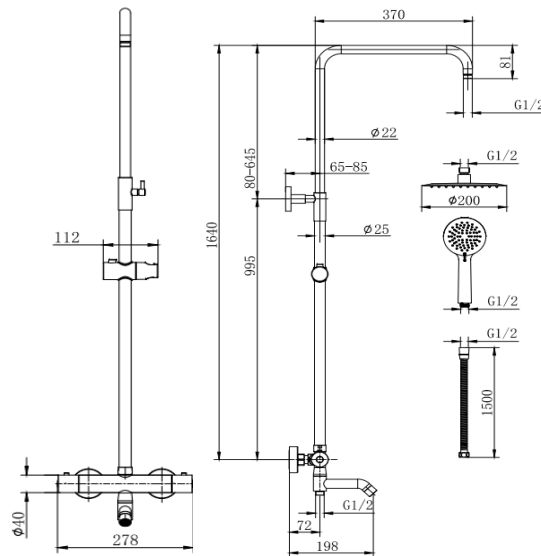
Product Code	SHRABSMCH
Weight (Kg)	4
Material	Brass, Stainless Steel, ABS
Finish	Chrome
Min Pressure	0.5
Max Pressure	5.0
<i>All pressure in bar. All flow in L/Min</i>	

Key features:

- Thermostatic cartridge and ceramic disc valves
- Neoperl Aerator
- Automatic shut-off on supply failure
- Pre-set to 38 °C with override to 48 °C
- Electroplated finish

Description:

A contemporary thermostatic shower system. Chrome plated to BS EN 248. Supplied with a 200 mm ultra-slim stainless-steel shower head, 3-mode ABS handset, double interlock stainless-steel hose (1.5 m, G1/2"), and adjustable riser rail.



Flow Rates (Litres per minute)

System Pressure	0.1 Bar	0.2 Bar	0.3 Bar	0.5 Bar	1.0 Bar	1.5 Bar	2.0 Bar	3.0 Bar	4.0 Bar	5.0 Bar
Handset	-	-	-	2.2	4.9	-	7.3	8.3	8.4	8.3
Shower Head	-	-	-	2.3	4.9	-	7.4	8.3	8.4	8.3
Spout	-	-	-	1.7	4.3	-	6.7	8.8	10.2	11.5

All dimensions are approximate and subject to normal ceramic variation. Although every effort is made not to change the above product specific tion, Lecico reserve the right to do so without prior notific tion if necessary. *Against manufacturers defects. Full information on guarantees available upon request.