

# Rigid+ 48 Technical Panel

## Rigid+ 48mm Technical Panel

These technical panels feature an added layer of lightweight foam on the rear side. Perfect for concealing plumbing, electrical systems, and more. Tailored for high-tech applications, these panels eliminate the need for wooden framing or wall milling.

### Recommendations

**Adhesive:** Soudal XF250 is the recommended choice due to good initial adhesion, ample adjustment time and swift curing time. However, the majority of conventional silicone adhesives are also suitable.

**Tools:** Drills, saws and routers have all been tested on the material. We recommend fine-toothed saws over large teeth as this may leave the panel torn or shredded.

**Finishing:** For corners, end pieces and trims we offer custom solutions.

### Dimensions

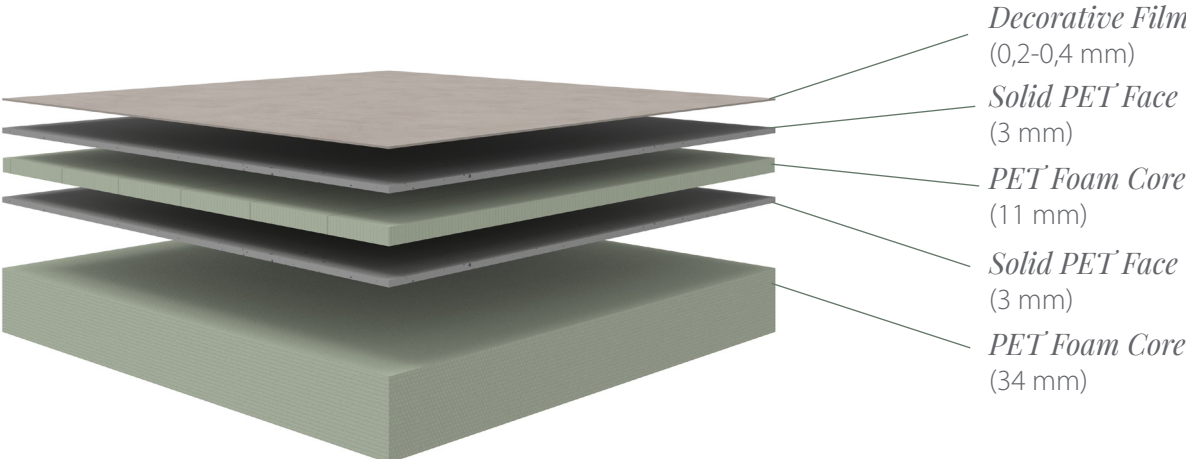
**Total Thickness:** 48mm  
**Core Thickness:** 8mm  
**Face Thickness:** 3mm  
**Width:** 1200mm or 600mm  
**Length:** 2420mm

### Material

**Decorative Film:** 99% recycled PET  
**Top Solid Layer:** 50% recycled PET  
**Foam Core:** 99% recycled PET  
**Bottom Solid Layer:** 50% recycled PET

### Weight & Density

**Core Density:** 70kg/m<sup>3</sup>  
**Face Density:** 1380kg/m<sup>3</sup>  
**Panel Weight:** 13.40kg/m<sup>2</sup>



# Shower Trays

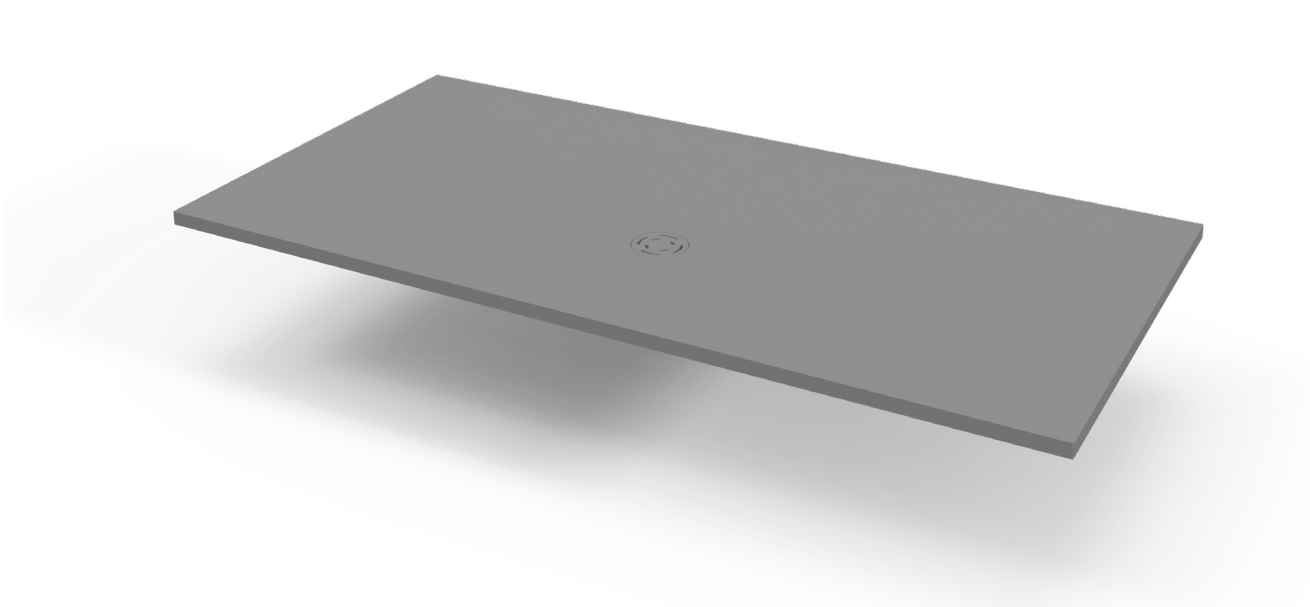
## Shower Trays

Our 28mm thick shower trays are not only fully waterproof but also available in a wide range of sizes. Crafted with structural strength and durability in mind. They feature a sloped design that efficiently directs water toward the waste. Square trays and trays under 1200 x 1200 mm feature a central waste, while larger shower trays feature a offset waste along the long edge.

## Recommendations

**Waste:** We recommend using our brushed stainless steel waste and trap.

**Fixing:** Trays can be fixed directly to any solid level floor, using suitable fixings or adhesives, depending on the floor type.



---

### *Brushed Stainless Steel Waste And Trap*

Quick and easy installation with a shallow depth. The silicone membrane allows water to pass through while preventing unpleasant odours. Additionally, a bi-injected washer is included under the tray to ensure a dependable installation.

---

*Code:* SHTRWSTTRAP

*Dimensions mm (W x D x H)* 120mm x 228mm x 83mm

