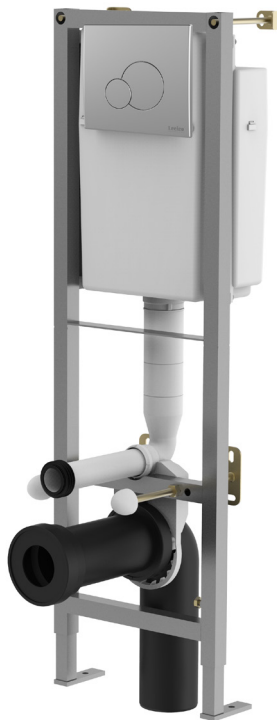


2 PART TALL FIXING FRAME INC CISTERN & CHROME EFFECT FLUSH PLATE



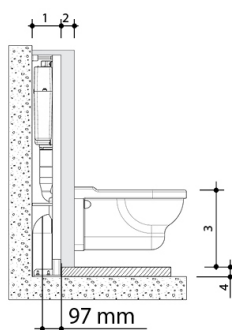
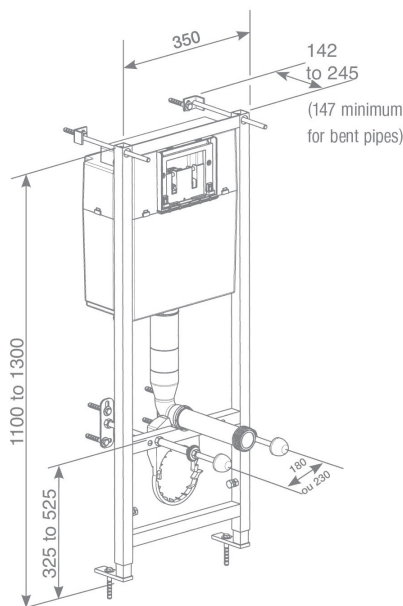
Product Code	FRAMELSIAM2PT
Flushing Volume (Ltr)	6/4 - Adjustable down to 4/2.6
Weight (Kg)	14.8
Cistern fittings included	Yes
Pre-installed/Bagged	Pre-installed
Material	Mixed Metal & Plastics
Colour	Matt chrome effect push plate
Flushing Mechanism	Dual Flush Push Plate
Access	Front
Inlet	RH Side Inlet

Key features:

- Strong and sturdy design
- Delayed fill inlet valve
- Flush plate located above seat radius

Description:

For installing a wall hung-standard, extended or compact WC. This heavy duty wall frame is suitable for bearing up to a 400kg load. Designed for wall installation. Dual flush 6/4 litres factory pre-set, adjustable to 4/2.6 litres. Matt chrome effect push plate.



1 = 142/147~245 mm
2 = 16 ~ 100 mm
4 = 0 ~ 200 mm
if 3 = 400 => 4 = 200 mm max*
if 3 = 480 => 4 = 120 mm max*

*When the distance between the WC fixing axle and the WC seat is 75 mm.

All dimensions are approximate and subject to normal variation. Although every effort is made not to change the above product specification, Lecico reserve the right to do so without prior notification if necessary. Full information on guarantees available upon request.