

## BACK TO WALL, RIMLESS, AMBULANT DOCM PACK (GREY RAILS)

### Ambulant packs



\*Illustrated as Pan only

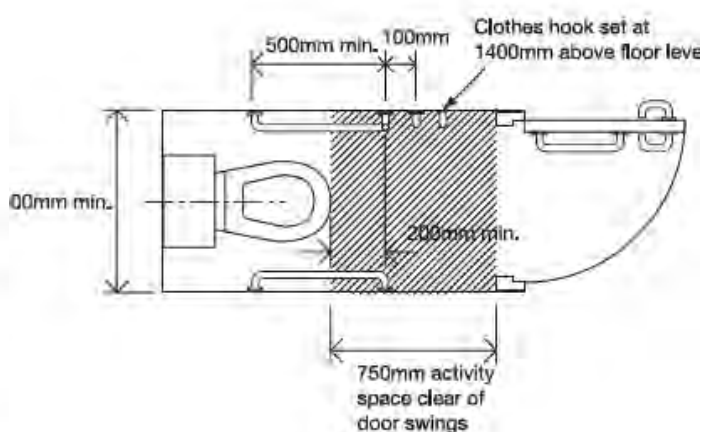
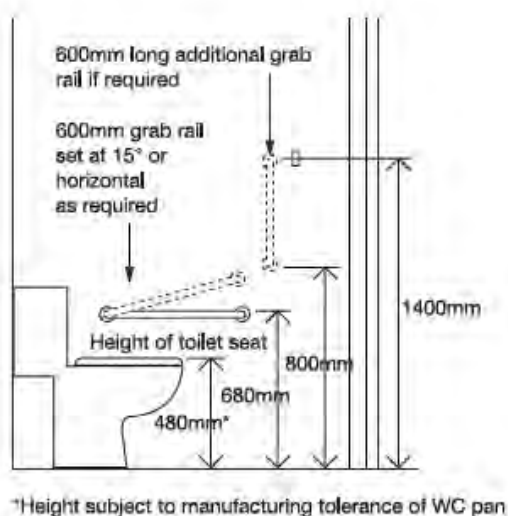
<b>Product Code</b>	<b>DOCMAMBTWGR</b>
<b>Weight (Kg)</b>	26
<b>Material</b>	Vitreous China, Mixed Plastics and Metals
<b>Grab Rails</b>	Concealed Grey Rails
<b>Inlet</b>	Bottom Inlet
<b>Flushing Volume (L)</b>	4/2.6ltr Flush
<b>RAL Colour</b>	Grey - 7005
<b>LRV</b>	18.52

#### Included In Pack:

- 3 60cm Grab rails, 1 45cm Grab rail & 1 Robe hook
- Raised Height BTW Pan and anti-lateral seat
- Concealed Cistern & Fittings Inc Spatula Lever

#### Description:

DocM ambulant WC's provide accessible convenience for the walking impaired. They bridge the gap between a full DocM and a standard WC. Ambulant cubicles provide sufficient space for those who are able to walk, but require additional assistance; these types of installation are not suitable for wheelchair users due to the restricted space. UKCA and HBN 00-10 Part C Compliant, WRAS Approved.



All dimensions are approximate and subject to normal ceramic variation. Although every effort is made not to change the above product specification, Lecico reserve the right to do so without prior notification if necessary. Full information on guarantees available upon request.