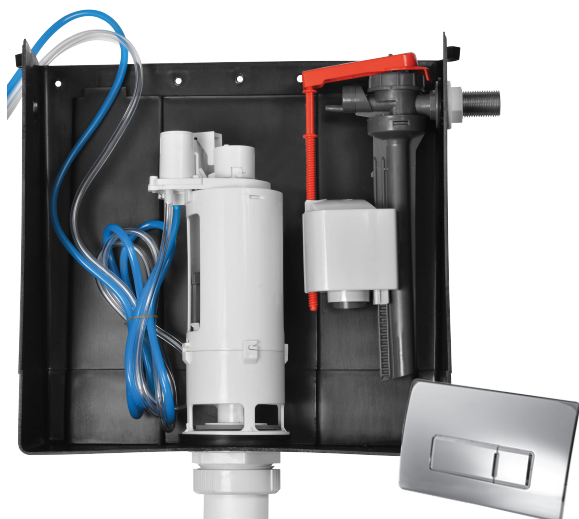


## CONCEALED COMPACT PNEUMATIC CISTERN INC DUAL FLUSH PLATE IN STEEL (CHROME EFFECT)



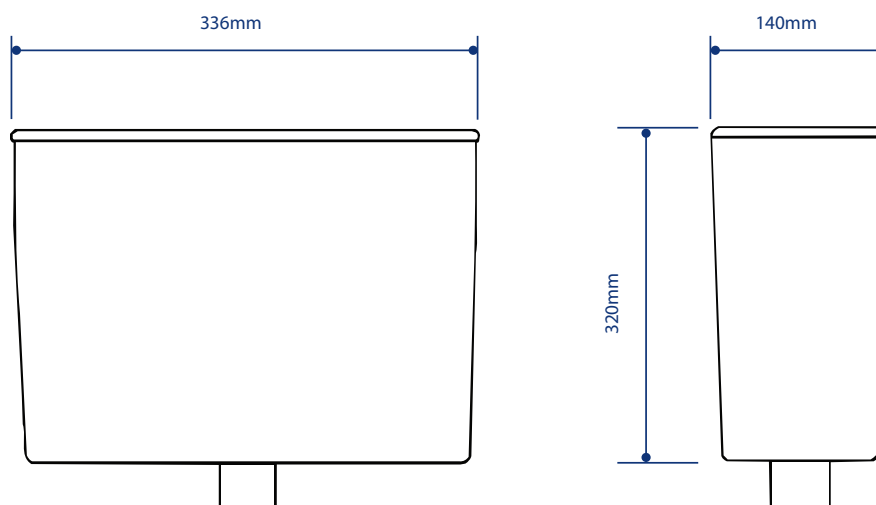
<b>Product Code</b>	<b>BTWPNEUMCH</b>
<b>Flushing Volume (Ltr)</b>	6/4 - Adjustable down to 4/2.6
<b>Weight (Kg)</b>	1
<b>Cistern fittings included</b>	Yes
<b>Pre-installed/Bagged</b>	Pre-installed
<b>Material</b>	Mixed Plastics
<b>Colour</b>	Cistern - Black Flush Plate - Chrome Effect
<b>Flushing Mechanism</b>	Dual Flush Push Plate
<b>Inlet</b>	Side
<b>Access</b>	Top

### Key features:

- WRAS approved
- Internal overflow
- Chrome effect dual flush push button

### Description:

Ideal for use behind tiles and partitioning and in most other concealed applications. Factory assembled for quick and easy installation. Includes dual flush push button plate with a chrome effect finish.



All dimensions are approximate and subject to normal ceramic variation. Although every effort is made not to change the above product specification, Lecico reserve the right to do so without prior notification if necessary. Full information on guarantees available upon request.