

STEEL BATH 1700 X 700 SLIP RESISTANT TG 2TH



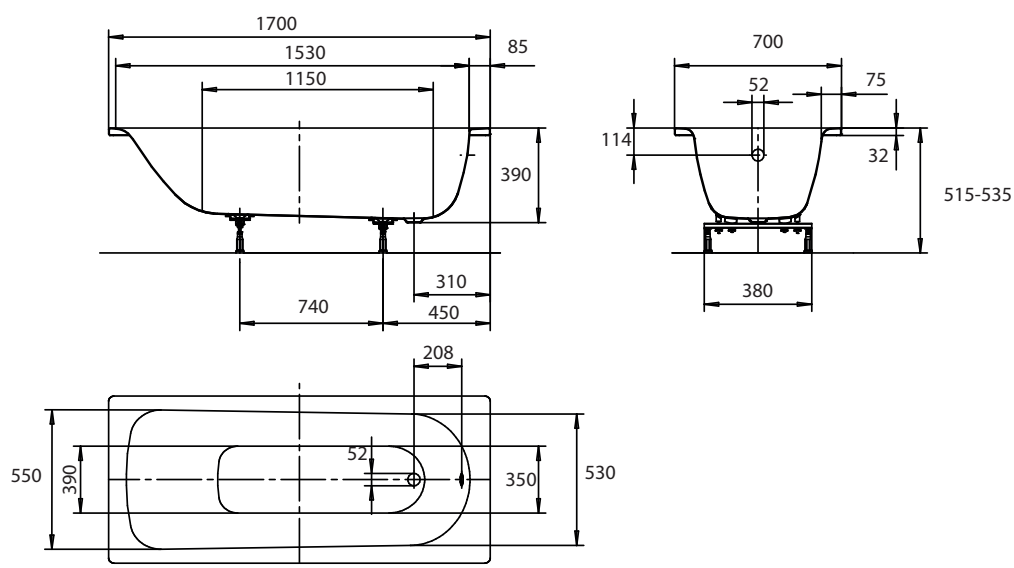
| | |
|-------------------------|-----------------------------------|
| Product Code | BSWH1700 |
| Weight (Kg) | 26.6 |
| Material | Enamel coated steel |
| Tap holes | 2 |
| Colour | White |
| Capacity (Ltr) | 156 |
| Bath Panels (mm) | 1700 - BFPANEL 700 - BENDPANEL |

Key features:

- Two pre-drilled tap holes and grips
- CE Compliant
- Slip resistant finish
- Top fix grips

Description:

This steel single seater bath is made from enamel coated steel, perfect for family life this coating makes the bath impervious to scratches and makes it ideal for high traffic. Available in multiple sizes this classic rectangular bath comes as standard with a slip resistant finish, is pre-drilled for grips/brass ware and includes adjustable feet



All dimensions are approximate and subject to variation. Although every effort is made not to change the above product specification, Lecico reserve the right to do so without prior notification if necessary. Full information on guarantees available on request.