

STEEL BATH 1500 X 700 ANTI-SLIP TG 2TH



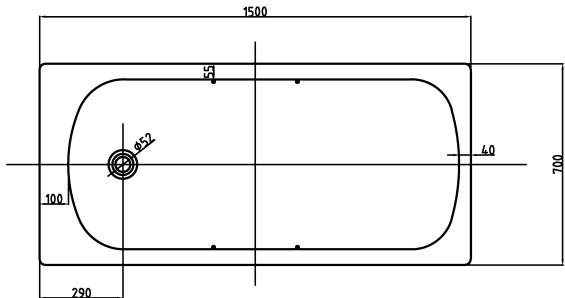
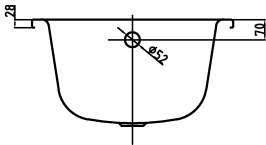
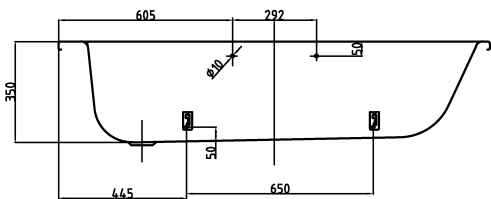
Product Code	BSAT1500B
Weight (Kg)	20.2 (bath only)
Material	Enamel coated steel
Tap holes	2
Colour	White
Capacity (Ltr)	150
Bath Panels (mm)	1700 - BFPANEL2 700 - BENDPANEL2

Key features:

- Two pre-drilled tap holes and grips
- 1.8mm in Thickness
- Slip resistant finish
- Zinc alloy grips
- 2 year guarantee

Description:

This steel bath is made from enamel coated steel, perfect for family life. This coating makes the bath impervious to scratches and makes it ideal for high traffic. Available in multiple sizes this classic rectangular bath comes with a fired slip-resistant finish as standard and pre-drilled tap holes.



All dimensions are approximate and subject to normal manufacturing variation. Although every effort is made not to change the above product specification, Lecico reserve the right to do so without prior notification if necessary. Full information on guarantees available on request.