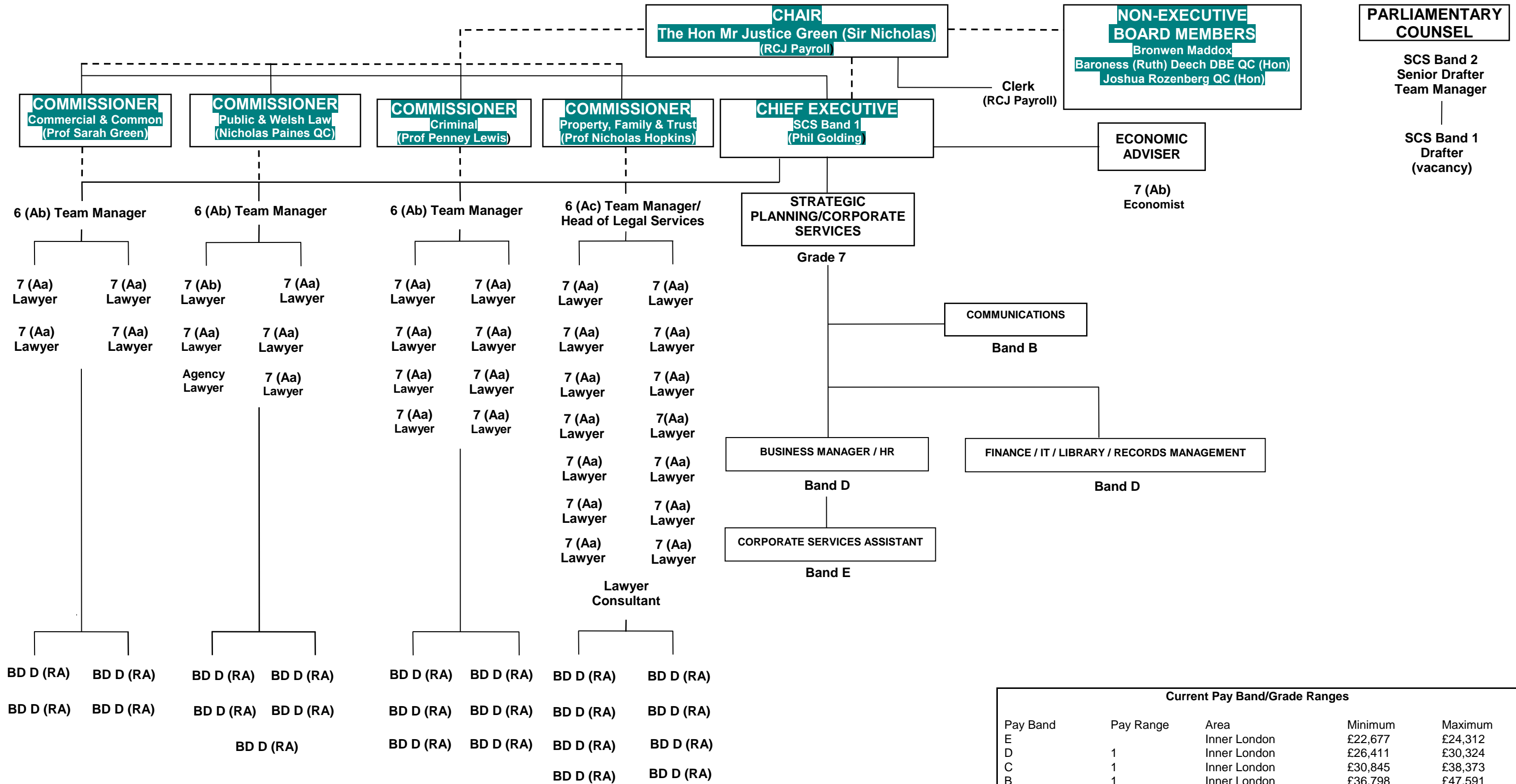


Law Commission Organisation Chart 2 (Senior Staff Names)



NOTE
The Chair, Commissioners, Chief Executive and Non-Executive Board Members constitute the Law Commission Board

Last updated: 10 Jan 2021

KEY
RA = Research Assistant
BD = Band

Pay Band	Pay Range	Area	Minimum	Maximum
E		Inner London	£22,677	£24,312
D	1	Inner London	£26,411	£30,324
C	1	Inner London	£30,845	£38,373
B	1	Inner London	£36,798	£47,591
	Ba	Specialist + 5%	£38,638	£49,919
	Bb	Specialist + 10%	£40,478	£52,248
	Bc	Specialist + 15%	£42,319	£54,575
Pay Grade				
6		Inner London	£60,295	£76,000
	Aa	Specialist + 5%	£63,310	£79,800
	Ab	Specialist + 10%	£66,325	£83,600
	Ac	Specialist + 15%	£69,340	£87,400
7		Inner London	£52,845	£63,500
	Aa	Specialist + 5%	£55,487	£66,700
	Ab	Specialist + 10%	£58,130	£69,900
	Ac	Specialist + 15%	£60,722	£73,000