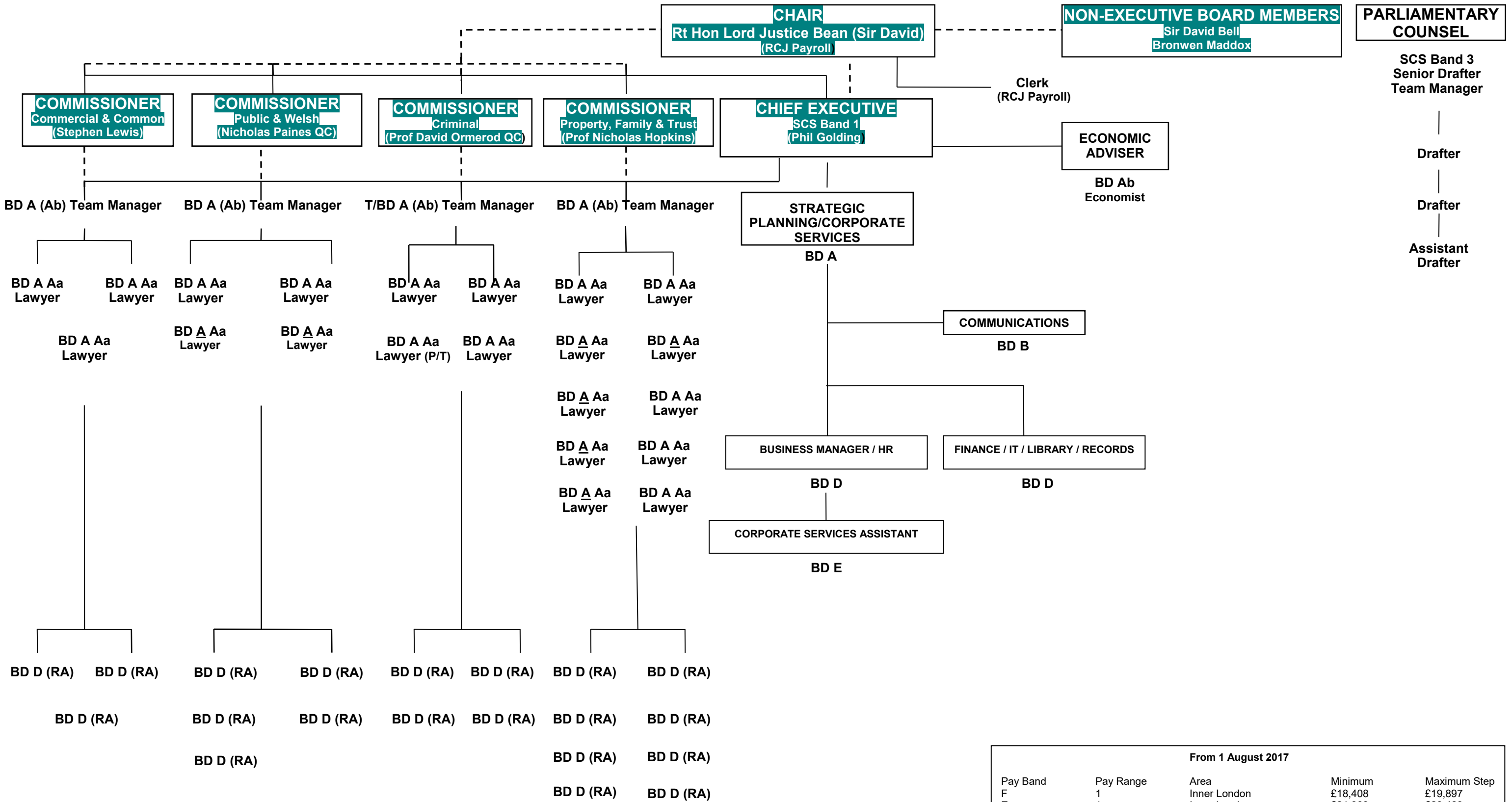


Law Commission Organisation Chart 2 (Senior Staff Names)



NOTE
The Chair, Commissioners, Chief Executive and Non-Executive Board Members constitute the Law Commission Board

KEY
RA = Research Assistant
BD = Band

Last updated: 21 Mar 2018

From 1 August 2017				
Pay Band	Pay Range	Area	Minimum	Maximum Step
F	1	Inner London	£18,408	£19,897
E	1	Inner London	£21,903	£23,483
D	1	Inner London	£25,510	£29,290
	1	Inner London	£30,088	£37,432
	1	Inner London	£35,895	£46,424
	Ba	Specialist +5%	£37,690	£48,746
C	Bb	Specialist +10%	£39,485	£51,067
	Bc	Specialist +15%	£41,280	£53,388
	1	Inner London	£51,549	£69,659
A	Aa	Specialist +5%	£54,126	£73,142
	Ab	Specialist +10%	£56,704	£76,625
	Ac	Specialist +15%	£59,282	£80,108