



Know about Jersey

A resource to help understand our island

Commissioned for the Island Identity Project, 2021

Contents

Jersey's constitution and political system	2
Jersey's population.....	7
Jersey's public services	8
Terminology, language, flag, emblem and anthem	10
Jersey's international links.....	14
Jersey's Economy	26
Jersey's finances.....	31
Jersey's Parishes.....	35
Jersey's legal system.....	43
Jersey's heritage.....	46
Jersey's culture, arts and sport	50
Jersey's history.....	55
Jersey's natural environment.....	64



Jersey's constitution and political system

The Bailiwick of Jersey is a self-governing Parliamentary Democracy. Jersey is autonomous in all domestic matters and has its own government, led by the Chief Minister, and its own legislature – the States Assembly. Jersey has its own independent legal, administrative and fiscal systems.

The Queen is the Head of State and the Lieutenant-Governor acts as Her Majesty's personal representative in Jersey. The relationship between Jersey and the Crown is one that derives from the British sovereign's capacity as heir to the Dukes of Normandy.

By long-standing convention, the Crown, now represented by the UK Government, is generally responsible for Jersey's defence and representing its international interests. However, treaties may only extend to Jersey where the Government has given its express consent to be bound by any international commitments. Since the beginning of the 21st Century, Jersey has taken greater responsibility for asserting and promoting its separate international identity.

Historical background

Jersey's constitution and political system, like those of other territories, are heavily influenced by its history so a brief understanding of the history of Jersey is helpful. It is certain that Jersey was part of the enlarged Kingdom of Brittany from 867. In 933 the Channel Islands were annexed by the Duke of Normandy and for all practical purposes became part of the Duchy of Normandy. In 1066 William, Duke of Normandy, defeated King Harold of England at the Battle of Hastings thereby unifying the Duchy of Normandy and the Kingdom of England under one crown.

In view of the loyalty of the Channel Islands and the Crown conferred several privileges and liberties on the Islands in a series of Royal Charters. The Royal Charters were granted by sixteen English (and subsequently British) Sovereigns from Edward III in 1341 to James II in 1687. The Charters granted various rights to islanders, including the right for the people of Jersey to be governed by their own laws and adjudicated on by their own courts, the right to export Jersey goods to England (and latterly Great Britain) free from import duties, and the general right to govern themselves in relation to matters of domestic concern. The Charters are an important source of Jersey's constitutional rights, and so the Jersey Legal Information Board, with the assistance of the Attorney General, recently arranged for the text to be collated and for an authoritative translation from Latin into English to be published online: <https://www.jerseylaw.je/laws/charters>.

The Royal Charters are a key part of the constitutional arrangements between Jersey and the Crown and are still of relevance today.

The status of Jersey as a "Bailiwick" refers to the office of the Bailiff. The position of Bailiff was created after the Treaty of Paris 1259 where King Henry III of England agreed to give up his claim to the Duchy of Normandy, with the exception of the Channel Islands. The holder of that office presides over the Island's unicameral legislature, the States Assembly. The Attorney General and the Solicitor General (offices dating back to the early 14th century) are, like the Bailiff, appointed by the Crown, and are non-political appointments.



The nature of the British Crown Dependencies

The limited prerogative powers of the Crown in Jersey, for example granting Royal Assent for Jersey Laws, are exercised on the advice of the sovereign's Privy Council. At present the Lord Chancellor and Secretary of State for Justice is the Privy Counsellor with responsibility for the Crown Dependencies. In consequence of this, the Ministry of Justice is responsible in the UK Government for managing the relationship with the Crown Dependencies and works closely with the Government of Jersey's External Relations Department. The UK's Ministry of Justice provides guidance to UK government departments on prior engagement requirements with authorities in each Crown Dependency.

The key point is that the Crown Dependencies are entirely self-governing in respect of their internal affairs, so they are free to have their own laws, education, health, policing, tax and other systems. Indeed, they do so, and their systems diverge quite significantly in some respects from those of the UK.

International relations

UK government has responsibility, on behalf of the Crown, for the defence and conduct of international relations on behalf of the Crown Dependencies. However, it is recognised that the Crown Dependencies have a distinct identity. Jersey's position was formally recognised in a 2007 document agreed by the British and Jersey Governments - *Framework for developing the international identity of Jersey*. The purpose of the document was "to clarify the constitutional relationship between the UK and Jersey, which works well and within which methods are evolving to help achieve the mutual interests of both the UK and Jersey". The three key provisions of the framework are –

- Jersey has an international identity which is different from that of the UK.
- The UK will not act internationally on behalf of Jersey without prior consultation.
- The UK recognises that the interests of Jersey may differ from those of the UK, and the UK will seek to represent any differing interests when acting in an international capacity.

The British Government entered into similar arrangements with the Isle of Man and with Guernsey.

Jersey and the other Crown dependencies can sign international treaties if they have been authorised by the British Government to do so – a process known as "entrustment". When the UK signs any treaty, convention or agreement the general practice is for this to be on behalf of the UK and "any of the Crown Dependencies or Overseas Territories" that wish the treaty to apply. The UK Government duly consults Jersey at an early stage on its wishes in respect of any international agreement it might wish to extend to Jersey and as a matter of binding constitutional convention will only extend an international agreement to Jersey if it confirms that it wishes to have the agreement extended.

Citizenship

There is no separate "Jersey citizenship". The UK Government is responsible for the laws covering British citizenship through the British Nationality Act 1981 (BNA), which applies to Jersey. This means that with a few exceptions people who were born in Jersey or whose parents were born in Jersey or



the UK are automatically British citizens. People who are not British citizens can apply for citizenship on the same basis as people in the UK.

The passport office in Jersey can issue British passports to Jersey residents entitled to hold one. People with a Jersey connection living in the UK can also obtain a British passport in the usual way but it will be a standard UK one. The British passport issued in Jersey makes no reference to the UK on its front cover, has a different page design and is issued in the name of the Lieutenant Governor. However, the rights of holders of passports issued in Jersey are identical to those of passports issued in the UK in respect of settling in the UK, meeting entry requirements in foreign countries and when the need arises receiving support from British Government consular services anywhere in the world.

Although there is no formal Jersey citizenship, people with strong connections with Jersey, including those living elsewhere, frequently describe themselves as coming from Jersey or being a Jerseyman or woman.

Legislature and Government

General elections are held every four years. The next General Election will take place on 22 June 2022.

The constituencies with effect from the 2022 election are –

St Helier South	4 deputies
St Helier Central	5 deputies
St Helier North	4 deputies
St Saviour	5 deputies
St Clement	4 deputies
St Brelade	4 deputies
St Mary, St Ouen & St Peter	4 deputies
St John, St Lawrence and Trinity	4 deputies
Grouville & St Martin	3 deputies

The Lieutenant Governor, Bailiff, Attorney General, Solicitor General and Dean of Jersey are technically members of the States Assembly with a right to speak but not vote. In practice, the Bailiff speaks only as presiding officer and the Lieutenant Governor speaks only at the beginning and end of their term.

Following the General Election, the members elect a Chief Minister who in turn nominates other ministers who have to be approved by the States. There is no distinction between the different categories of members in respect of being appointed a minister. The ministers comprise the Council of Ministers, comparable to the British Cabinet. The number of ministers and the portfolios can vary from time to time. Currently the Council of Ministers comprises the Chief Minister and ministers for Economic Development, Sport and Culture; External Relations and Financial Services; International Development; Infrastructure; Social Security; Children and Education; Home Affairs; Treasury and



Resources; Health and Social Services; Housing and Communities; and Environment. The Ministers each appoint one or more Assembly members as Assistant Ministers. No more than 21 Members of the Assembly may be appointed as ministers or assistant ministers.

There is provision for political parties in Jersey under the Political Parties (Registration) (Jersey) Law 2008. In recent elections the vast majority of members have been elected on an individual basis. However, it seems likely that at the next election in 2022 political parties will play a more prominent role. Four political parties are current registered –

Reform Jersey, established in 2012

Progress Party, established in 2021

Jersey Alliance, established in 2021

Jersey Liberal Conservatives established 2022

With members having been elected individually there is no formal party system in the States Assembly, but all members have an opportunity to participate in the making of legislation and also in scrutinising the actions of government through a number of scrutiny panels. The scrutiny panels are an important part of the checks and balances in the political system. They comprise members not in the government, and the holding chair of such a panel is regarded as a significant role. They have the power to initiate enquiries on particular subjects, to review legislation and to question ministers and officials as well as independent experts and those with a particular interest in a subject.

Laws are made in Jersey in much the same way as in other places. Most proposals for a law are made by the Government but individual members of the States Assembly are also able to propose a new law or an amendment to an existing law. Prior to a law being drafted there may well have been an extensive period of preparation and public consultation and possibly consultation on a draft of the proposed law. This is to ensure that the full implications of what is being proposed are assessed and understood. The first formal stage is for the proposal to be lodged in the States Assembly. It is at this stage that the full text of the proposed law is made public. There are then a number of opportunities for it to be debated by the States Assembly and for amendments to be proposed and considered. The States Assembly approves the final version, which is then submitted to the Ministry of Justice in the UK for formal approval by the Privy Council, which is normally done as a matter of course as the officials in Jersey ensure that there is nothing in the law that would conflict with the UK's international obligations. The law is then formally registered by the Royal Court in Jersey. A new law does not normally come in to effect immediately, but rather on days either specified in the law or made under provisions in the law. This is to give ample opportunity for any necessary new arrangements to be put into place and for those specifically affected by the law to have due notice of it.

The parishes

Jersey's 12 parishes are a key feature of the political structure of the Island. The parishes have existed in their current form for around 1000 years with only minimal boundary changes. Each of the parishes has a parish church and parish hall (save for St. Martins which has a public hall) and the parishes are the centre of many sporting and other social activities. The parishes also form the basis of constituencies for deputies. Until the 2022 reforms all parishes have at least one deputy; the new



constituencies are still parish-based, but most parishes will be combined with others in multi-member seats. St Helier, as the largest parish in terms of population, will be divided into three districts.

The parishes were originally created so each had part of the coastline and they had broadly similar levels of population. Now, the parishes range in size from the capital, St Helier, with around one third of the population to St Mary with under 2% of the population.

The parishes each have the same structure headed by the Connétable (Constable), who also is a member of States Assembly. The Connétable is supported by two “Procureurs du Bien Public” who have responsibility for ensuring that the finances of the parish are soundly managed. The parishes are divided into Vingtaines (or Cueillettes in St Ouen), each with two vingteniers, two roads inspectors and three constable’s officers. The Connétable heads the honorary police comprising also centeniers, vingteniers and constable’s officers.

A traditional event in each of the parishes is the biannual “Visite du Branchage”, by which the roads inspectors inspect roads and lanes to check that overgrown hedges are not causing problems for pedestrians and road users. Each year, two parishes are visited by the Royal Court – the “Visite Royale” – to check on the roads and hedges and also to inspect the accounts and receive reports from parish officials.

All ratepayers and electors are entitled to attend parish assemblies which elect the various officers – although not the Connétable who is elected by secret ballot in the same way as other States members, set the annual domestic rate and have other functions in relation to roads, licensing and contracts. A key feature of the parish system is that all the officers serve in an honorary capacity – although the constables are paid in their capacity as States Assembly members.

Lieutenant Governor

The Queen’s representative in Jersey is the Lieutenant Governor, appointed by the Queen for a five-year term, to be her personal representative and impartial adviser. The Lieutenant-Governor’s responsibilities include: representing the Queen on ceremonial occasions; hosting royal, ambassadorial and VIP visits and occasions in conjunction with the Island’s authorities and the UK government; promoting and playing an active part in the social and charitable affairs of the Island; all matters relating to British citizenship; and making recommendations for the award of honours to Jersey residents.

Bailiff and Law Officers

Jersey is technically described as a “bailiwick” after the Bailiff, the person who in medieval times was the local political head of the Island. The Bailiff is appointed by the Crown although on the advice of the Jersey Government and is always a “local” person. He or she will invariably have held other law officer positions.

The Bailiff is the civic head of the Island, as distinct from the political head, and has some formal responsibilities in respect of communications between the Jersey and UK Governments. He carries out a number of civic responsibilities and engagements. He is Presiding Officer of the States Assembly, akin to a speaker in the UK Parliament. He is responsible for the orderly conduct of the States Assembly



and its business. As Presiding Officer, he has the right of speech – which is mainly exercised for ensuring the orderly conduct of the proceedings – but he cannot vote.

The Bailiff also has another important role in Jersey. He is President of the Royal Court and presides over cases. The Bailiff is supported by a Deputy Bailiff or Chief Justice. The Attorney General and Solicitor General provide legal advice to the Government and provide an independent public prosecution service. These three officers are appointed by the Crown on the advice of the Jersey Government.

Jersey's population

Long-term trends

The earliest estimates of the population of Jersey come from historians and inevitably have a significant margin of error. Human occupation of Jersey first occurred during glacial times, with the earliest reliable dated human occupation going back around 250,000 years. It has been estimated that between 4000 and 3000 BC the population was between 2,000 and 4,000, based on between 10 and 20 separate communities each with a population of between 200 and 250. The population then seems to have declined to about 500 in 2000 BC. There are then no estimates until 1050 when using the churches as a reference point suggests a population of around 6,000.

The first substantive “census” in Jersey was the 1331 Extente, sometimes referred to as the Jersey Domesday Book. This suggests that there were around 2,000 houses in the Island, which implies a population figure of 10,000-12,000. The Black Death in 1348/49 had a devastating effect and by the early 15th Century the population may have fallen to 4,000-5,000. Subsequent estimates suggest a population of 7,000 in 1541, 16,200 in 1685 and 20,000 in 1788.

The first formal census was conducted in 1821 and subsequently censuses have taken place every ten years, and for a period every five years, with the exception of 1941

Population growth in recent years has been driven primarily by net immigration rather than by natural growth, the excess of births over deaths. Statistics Jersey publishes annual estimates of population change, split between natural growth and net migration.

The first of the 2022 census bulletins are below:

[Bulletin 1 – Population Characteristics](#)

[Bulletin 2 – Households and house](#)

[Bulletin 3 – Health Characteristics](#)

Population characteristics – religion

The official religion in Jersey is the Church of England with the Dean of Jersey sitting in the Assembly as a non-voting member. In practice Jersey is a secular society in which all religions are welcome.



The most recent data on religion is from an annual social survey conducted by the Government in 2016. 54% of adults regarded themselves as having a religion, 39% said they did not have a religion and 7% were not sure. More women (58%) than men (50%) said they had a religion. Having a religion was strongly correlated with age, the proportion rising steadily from 37% in the 16-34 age group to 78% in the 65+ age group.

Of those who had a religion 97% specified Christian, divided between Catholic (43%), Anglican (44%) and other (13%). Those born in Poland or Portugal/Madeira were 100% Catholic. Of those born in Jersey 52% were Anglican and 34% Catholic.

Other religions stated were Buddhist, Hindu, Jewish, Muslim and Sikh.

Jersey's public services

Jersey has its own education, health, police, taxation, social security and other public services. These differ in material respects from those of the UK but are run in such a way as to be compatible.

Education

The Jersey Curriculum is based on the new National Curriculum in England, adapted to reflect the Island's unique heritage and environment and the needs of the local economy.

There are 33 primary schools and 10 secondary schools which cover the 11-16 age group, and 5 for the 16-18 age group

Highlands College provides further education including a number of degree courses, and several specialist bodies including offer degree courses in conjunction with UK universities. Most Jersey school leavers go on to higher education at UK universities.

Health

Jersey has its own health system so is not part of the English National Health Service. A range of health services are provided on-Island, including a general hospital, a maternity hospital, GP practices, chemists and specialist services. Some services are free but others, including GP visits, have to be paid for. Jersey has an arrangement with the National Health Service whereby its residents who need treatment that cannot be obtained in the Island can be treated by the NHS with Jersey meeting the cost.

A major issue for the Island at present is the need to replace the General Hospital, which is no longer fit for purpose. The Our Hospital project will provide a new state-of-the-art hospital.

Social security

Jersey has a comprehensive contributory social security scheme providing broadly similar benefits to the systems in the UK and other European countries. Employees pay at the rate of 6% of salaries and employers pay 6.5%. The self-employed pay 12.5%. The current full rate old-age pension is £225.96 per week. For a married couple receiving a pension based on the contributions of the husband, the maximum rate is £375.13 per week.



Jersey also has reciprocal arrangements with many countries to protect the interests of people moving in and out of Jersey.

There is a separate income support scheme for people on low or no incomes funded by taxation.

Emergency services

The States of Jersey Police employs all the procedures, methods, technology, training and modes of operation of police elsewhere in the British Isles and co-operates with police forces in the UK and other countries. However, because Jersey is a Crown Dependency the Police has a wider range of functions than a police force in England. They include -

- An enhanced role in supporting the administrative requirements of the criminal justice process, providing a vetting and barring service, managing the town CCTV system and maintaining Jersey's central firearms register
- Policing Jersey's ports.
- Operating a Financial Intelligence Unit that works with enforcement agencies around the world to combat money laundering and terrorist funding

The Police Force currently operates with an establishment of 215 police officers and 118 civilian staff.

In addition to the States of Jersey Police, each parish has an honorary police force which deals with specific issues, and which can bring cases before the courts.

There are comprehensive Fire and Rescue services, which like the police service work closely with their English counterparts.

Jersey is a maritime nation and therefore there are lifeboat services.

Transport

Jersey has a public bus service operating throughout the Island and a regulated taxi service.

Jersey has a comprehensive road network ranging from Victoria Avenue, a two-lane road that runs from St Helier to Bel Royal, to small country lanes between two earth banks that are barely wide enough for a single vehicle.

Ports of Jersey (a private limited company wholly-owned by the Government of Jersey) is responsible for managing the airport, harbours, marinas and the Jersey Coastguard. It also delivers two of Jersey's largest community events – the Jersey Boat Show and the Jersey International Air Display. Jersey Airport is one of the busiest in the British Isles, providing services to the United Kingdom and further afield. St Helier is a busy port providing essential freight services and also has a ferry terminal which services ferry links to France and southern England.

Jersey is part of a common travel area together with the United Kingdom, Guernsey, the Isle of Man and the Irish Republic. This means that there are no customs or immigration controls for people travelling within the area. For security reasons travellers to or from Jersey by sea or by air will be required to produce photographic proof of identity.



Housing

Housing in Jersey is very expensive. To help low-income islanders, income support meets some or all of rental payments for those with incomes below a certain level. The Government-owned housing stock has been transferred to a company wholly-owned by the Government but operated at arm's length and with an independent board. Andium Homes manages a stock of 4,500 homes, housing about 10% of the population. The company has an ambitious development programme. There are also several smaller social housing providers, the largest of which are Jersey Homes Trust, which has 800 homes, and Les Vaux Housing Trust, which has 350 homes.

Utilities

Jersey has to provide its own utilities, a challenging task for a small island with a population of 108,000.

There is a competitive telecommunications market, regulated by the Jersey Competition Regulatory Authority (JCRA). The largest provider is JT (formerly Jersey Telecoms but now rebranded as Join Together), wholly-owned by the Government of Jersey, which also operates in Guernsey and six other jurisdictions. It employs 600 staff. It has installed a full-fibre network throughout the Island with the third fastest broadband speeds in the world.

Postal services are provided by Jersey Post, like JT wholly owned by the Government of Jersey and regulated by the JCRA. Jersey Post operates a network of 21 post offices across the island and provides postal delivery services to all Jersey residential households and business, five days a week.

There is a single provider of electricity Jersey Electricity. This is listed on the London Stock Exchange, although the Government of Jersey has a 62% shareholding. The company is not regulated although the JCRA has powers to investigate the company given its market power. The company obtains 95% of its electricity from France through three undersea cables, most of the power coming from EDF's nuclear power station at Flamanville on the nearby Cotentin peninsula. The remainder of its electricity comes from an energy from waste plant and solar power. It also has the capability to generate electricity on-island in the event of a disruption of the supply from France.

Water is provided by Jersey Water, also wholly owned by the Government of Jersey. Jersey relies on rainfall harvested in a number of reservoirs. It also operates a desalination plant.

Gas is provided by Jersey Gas

Terminology, language, flag, emblem, anthem and identity

Terminology

Jersey has the formal status of being a **British Crown Dependency**, a status also held by Guernsey and the Isle of Man.

Jersey can be correctly described as a **small island nation**, although this term has no legal meaning.

Jersey has a Bailiff, a role that goes back to the 14th Century and which includes being the civic head of the Island.

The **Government of Jersey** is the correct description for the Island's Government. The Government comprises Ministers and the related administrative functions.

Jersey's Parliament is called the **States Assembly**.

Language

Jersey has three official languages - English, French and Jersey Norman French or Jèrriais – although in practice English is the universal everyday language. Government bodies are required to use Jèrriais in letter headings, business cards, email signatures and other relevant communications. The correct translations are –

English	French	Jèrriais
Jersey	Jersey	J'èrri
Bailiwick	Bailliage	GAP
Bailiff	Bailli	Bailli
Government of Jersey	Gouvernement du Jersey	Gouvèrnément d'Jerri
States Assembly	Assemblée des États	GAP

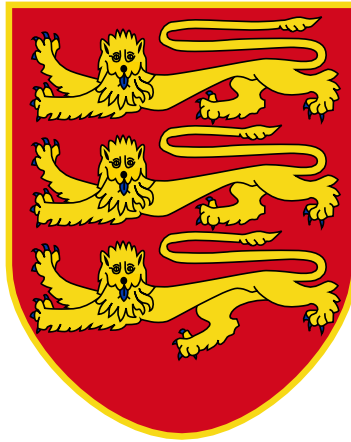
Flag

The **flag of Jersey** is composed of a red saltire on a white field. In the upper quadrant the badge of Jersey is surmounted by a yellow Plantagenet crown. Surprisingly, no official specification sheet exists so variations on this design are common.



Emblem

The coat of arms of Jersey is a red shield with three gold leopards. Because this shield is identical to that of England the Government of Jersey and the Judicial Greffe use this shield surmounted by a Plantagenet crown, as on the flag. For some reason the States Assembly does not do likewise- yet.



Anthem

After a competition in 2008 an anthem was chosen for Jersey entitled *Island Home*. However, the States Assembly have never debated and approved *Island Home* and it is not therefore an official anthem. At official occasions, Jersey has in the past used *Island Home*, as well as the unofficial anthem of the Normandy region *Ma Normandie* and *Beautiful Jersey*, a popular song with a strong melody that has lyrics in both English and Jèrriais.

Island Home

Ours is an Island home
Firm on rock and strong by sea
Loyal and proud in history,
Our thankful hearts are
Raised to God for Jersey.

The beauty of our land
Long inspires both eye and mind.
Ours the privilege to guard its shore
So help we God that
Jersey might by grace endure.

Beautiful Jersey

There's a spot that I love that I ne'er can forget,
Tho' far I may roam 'twill be dear.
For its beauty will linger in memory yet,
Where'er o'er the world I may steer.
Dear Jersey, fair Isle, of the ocean the queen,



Thy charms are so many and rare;
For love finds a home 'mid each beauteous scene,
My heart ever longs to be there.

*Y'a un coin d'tèrre qué j'aime, qué j'n'oubliéthai janmais -
Dans mes pensées tréjous preunmyi -
Car jé n'vai rein à compather à ses bieautés
Dans touos mes viages à l'êtrangi.
Jèrri, man paradis, pus belle taque souos l'solé -
Qué j'aime la paix dé chu Jèrri!
L'amour lé veurt, j'ai si envie dé m'en r'aller
Èrvaie man chièr pétit pays,*

Beautiful Jersey, gem of the sea,
Ever my heart turns in longing to thee;
Bright are the mem'ries you waken for me,
Beautiful Jersey, gem of the sea.

*Man bieu p'tit Jèrri, la reine des îles -
Lieu dé ma naissance, tu m'pâsses bein près du tchoeu;
Ô, tchi doux souv'nîn du bouôn temps qu' j'ai ieu
Quand j'pense à Jèrri, la reine des îles!*

On thy shores I have wandered in glad days of yore,
With one who is dear to my heart.
And the love-links will bind us as one evermore,
Although for a while we must part.
And oft in my dreams do I see the dear place
The dear little Isle of the sea,
And in fancy I gaze on a sweet loving face,
The face that is dearest to me.

*Jé connais touos tes charmes; et combein qu' j'en ai joui
Auve eun-é chiéthe anmie, aut' fais!
Quand même qué pour a ch't heu jé n' sais pon tout près d'lyi,
N' y'a rein qu' Jèrri dans mes pensées.
Et pis, comme tout bouôn Jèrriais, dans l'fond d'man tchoeu
J'ai grand envie dé m'en r'aller
Dans l'île tchi m'a donné tant d'amour et d'bonheu,
Èrvaie ma chiéthe et man siez-mé.*

Beautiful Jersey, gem of the sea
Ever my heart turns in longing to thee;
Bright are the mem'ries you waken for me,
Beautiful Jersey, gem of the sea.



*Man bieu p'tit Jèrri, la reine des îles -
Lieu dé ma naissance, tu m'pâsses bein près du tchoeu;
Ô, tchi doux souv'nîn du bouôn temps qu' j'ai ieu
Quand j'pense à Jèrri, la reine des îles!*

Jersey's international links

Jersey is a small island, but has been outward looking with strong trading, family and other links not only with its near neighbours, France and the UK, but also further afield. These links have been driven by a combination of Jersey's geography, history and political status together with external factors. Its outward looking nature has influenced internal developments.

Geography and history

Jersey is a small island just 15 kilometres from the Normandy coast and 42 kilometres from Saint Malo, but 160 kilometres from the South Coast of England. Its island nature has meant that fishing has been an important economy activity. As boats became bigger so the activity expanded from mackerel and conger eels in local waters with exports to France in the 13th Century, to the development of a large cod-fishing industry centred on what is now Canada in the 19th Century.

Jersey is also strategically placed on the shipping route between western France and further afield to England. In the early days, boats hugged the coast for navigational and safety reasons. Jersey, but more particularly Guernsey, served as ports of call and safe havens. Strong tides, variable weather and reefs make the seas around Jersey dangerous, and many ships foundered, the Island reaping a modest benefit from the resulting wrecks.

Jersey's links with Normandy are much more than geographical. In about AD933 the Duke of Normandy, annexed the Channel Islands and Jersey became firmly in the Norman world. In 1066 the then Duke of Normandy defeated King Harold of England in the Battle at Hastings and became King William I of England. The ultimate source of authority in Jersey and the other Channel Islands had also become the holder of the Crown of England.

In 1204 Normandy and England separated but with Gascony and the Channel Islands being retained by the English Crown. The move of Jersey's allegiance from the Dukes of Normandy to the Kings of England became formalised with the Treaty of Paris in 1259, under which the English Crown gave up its claim to France, other than Gascony. In 1294 England lost Gascony to France leaving the Channel Islands and Calais as the only remaining "French" possessions of the English Crown. Calais was lost in 1558.

However, for much of the next 600 years after the loss of Gascony England and France were either in a state of war or a state of tension. As a result, Jersey was heavily fortified by English Kings, the results of which form much of the Island's rich heritage today. But throughout that period Jersey's proximity to France meant that trading continued with France, some legal and some not legal and between 1483 and 1689 Jersey was granted neutral status in these conflicts by Papal Bull issued by Pope Sixtus IV.

Patterns of immigration into Jersey

From the 16th Century to the 19th Century Jersey became the home for French religious refugees. French protestant refugees first came to Jersey in the mid-16th Century and there was a particularly large influx between 1585 and 1588. There is no indication of the numbers involved although it was such that it was necessary to have an extra market day each week. Following the revocation of the Edict of Nantes in 1685, the flow of refugees increased significantly. Generally, the refugees were entrepreneurial and industrious, and contributed significantly to the economic development of Jersey.

From 1789 there was a further burst of immigration, this time predominantly of Roman Catholic priests following the French revolution. There may have been as many as 4,000 refugees, doubling the size of St Helier's population.

In 1848, as a result of the political upheavals in that year, there was a rather different inflow of refugees, not only from France (among them Victor Hugo) but also from Russia, Poland, Hungary and Italy. A final burst of French refugees occurred in the early 1870s as a result of anti-clerical laws passed by the Third Republic.

Beginning in the early 19th Century there was a very different wave of immigration - economic migrants seeking to benefit from, and contributing to, the booming Jersey economy. The population nearly doubled between 1821 and 1851, and probably increased in the 30 or so years before by around 40%. This population increase was almost entirely caused by immigration. The major construction projects, particularly Fort Regent and St Catherine's breakwater, required amounts of labour that could not be met from within the Island. Building workers were attracted from Scotland and Ireland in particular. The 1851 Census recorded that 27% of the population had been born in the British Isles other than Jersey. There was a notable doubling of the Irish born population, from 1,357 in 1841 to 2,704 in 1851 and there was an Irish quarter in St Helier central on Clare St. and Sligo Lane.

From about 1820 the Jersey economy also experienced the first inflow of wealthy immigrants, largely retired military officers and senior officials from the colonies, attracted by the tax regime and way of life, including cheap alcohol. It was estimated that there were 5,000 English residents in the early 1840s. To a large extent they were middle class, did not work and seemed to have kept their distance from the local community. However, their local spending power would have created local jobs, and perhaps helps to explain the seemingly high alcohol consumption.

From the 1840s to the middle of the 20th Century there was a steady flow of migrant workers from Brittany and Normandy to Jersey, particularly to work in agriculture. Most probably intended to be short term migrants, planning to return to France. But some decided to settle in Jersey, many of today Jersey's population being descended from them. There was a fairly steady increase in the French-born population of almost 4,000 between 1851 and 1901, at a time when the total population fell by 4,500. As a consequence the proportion of the population born in France rose from 3.5% to 11.4%. In addition, as the 1891 and 1901 censuses show, many of the French immigrants settled in Jersey and had children who, although Jersey-born, were part of the French community. In 1901 31% of children born in Jersey had fathers who were French.

The population remained fairly stable in the inter-War period. Post-War there has been continued economic expansion which has brought with it new waves of immigration. The tourism industry rapidly became the dominant industry. But tourism required a large volume of relatively low cost labour. Jersey turned first to Italy, then Spain and then Portugal, more specifically Madeira, for staff to work in hotels, cafés and restaurants. The 1961 census recorded 118 Portuguese (0.2% of the



population). In 1981 the number of Portuguese was 2,321 (3.1% of the population) and it increased further to 3,439 (4.1%) in 1991, 5,137 (5.9%) in 2001 and 7,031 (7.2%) in 2011, the largest pro rata Portuguese minority anywhere in the world.

Jersey was also attractive to young Britons. Those who worked in Jersey for a season could also avoid tax in both the UK and Jersey as they were entitled to a full personal allowance in each jurisdiction.

More recently, since a number of East European States joined the European Union in 2003, Jersey businesses have sought to meet their labour needs from Poland and increasingly Romania. The 2011 census recorded 3,133 people who had been born in Poland. As a result of the UK's departure from the European Union, nationals of the remaining EU countries living in the British Isles have had to apply for settled status if they wish to continue their residence. The numbers of those applying gives some additional information on the current make-up of the Jersey population. As at 30 June 2021 17,550 EU nationals had applied. Of this total 9,980 (57%) were Portuguese, 3,219 (18%) were Polish, 1,765 (10%) were Romanian and 606 (3%) were French.

Jerseymen becoming established in America

Waves of immigration into Jersey have been matched by waves of emigration, some on the back of the fishing and related shipping industries and some of entrepreneurial people seeking a life somewhere larger than Jersey.

From about 1660 there was some migration from Jersey to the eastern seaboard of America, which was driven by a combination of reasons including religion, trade and a wish to escape from poverty. The settlement was concentrated in the Boston area, in particular Marblehead, Newburyport and Salem.

Among the most prominent of the settlers from Jersey was Philippe Langlois, born in Jersey in 1651, who settled in Salem and built up a significant trading business. He abandoned his Jersey name, to become John English.

A prominent Jerseyman to make his mark in America was John Cabot. He was born in St Helier in April 1680 and left Jersey for America around 1700. He rapidly built up a successful trading and shipping business, operating a fleet of privateers carrying opium, rum, and slaves. John Cabot's children married into other leading Boston families and his descendants held prominent positions in Boston society, being eminent in trading, privateering, medicine, industry and the army and navy. Direct descendants include George Cabot (US Senator and Secretary of the Navy), Oliver Wendell Holmes (Supreme Court Justice), Henry Cabot Lodge (US Senator), Henry Cabot Lodge, grandson of his namesake (vice presidential candidate and Ambassador to South Vietnam and Germany) and John Kerry (US Secretary of State and currently President Biden's Special Envoy on Climate).

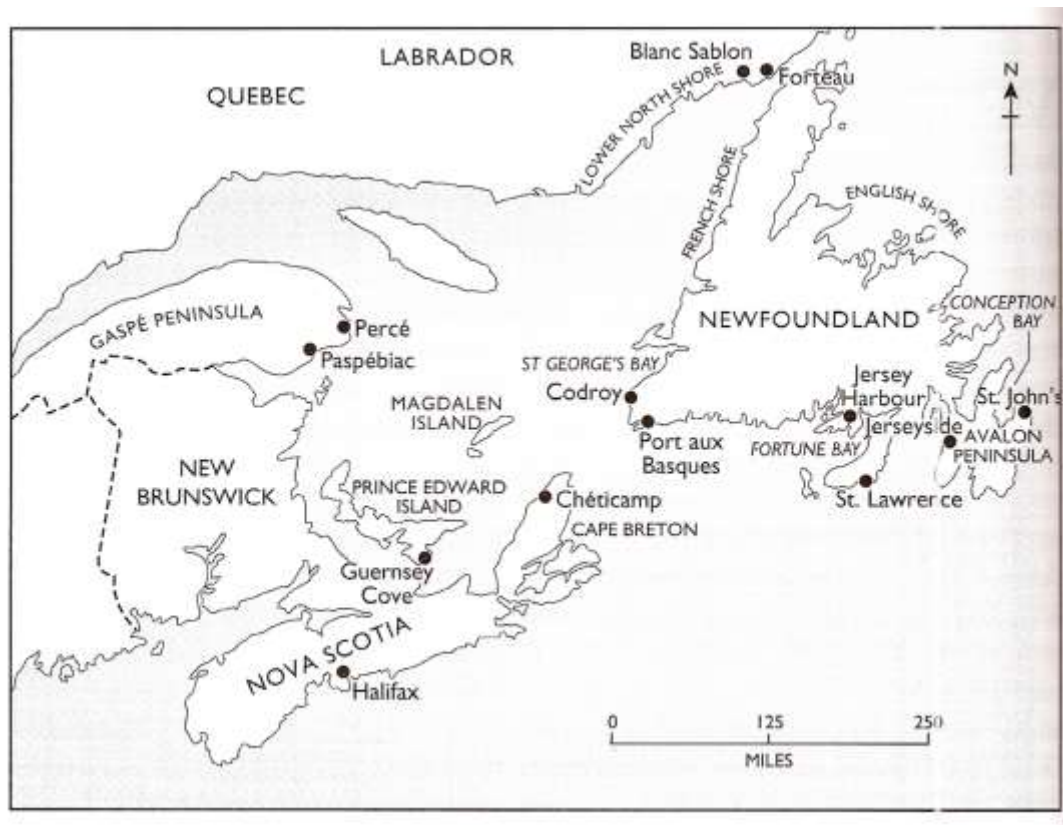
The Jersey settlement of Canada

By the 16th Century Jerseymen has expanded beyond fishing for mackerel and conger eels in local waters to large scale cod fishing in North American waters. The nature of the industry is comprehensively explained in Rosemary Ommer's book. *From Outport to Outpost, A Structural*

Analysis of the Jersey-Gaspé Cod Fishery, 1767-1886 (McGill-Queen's University Press, 1991).

The first trading posts were established in the late 17th Century in Newfoundland, particularly Conception Bay, Trinity Bay and the aptly named Jersey Bay. There is significant similarity between place names in Newfoundland and those in Jersey, suggesting a significant Jersey influence.

The main expansion was between 1770 and 1790, initially in Harbour Grace and then Arichat in Cape Breton Island. A number of Jersey firms, in particular Charles Robin & Co, Le Boutillier Brothers and Janvrin & Janvrin, came to dominate the industry around the Gaspé passage. Janvrin Island in Nova Scotia is named after John Janvrin. The largest company, Charles Robin & Co, operated from a base in Paspébiac, although it was firmly controlled from Jersey. This and other onshore bases in Port Daniel, Grande-Rivière, Percé, Gaspé and Grande-Grave, were staffed largely by young men from Jersey. Typically, they arrived in the spring and left in the autumn, although some stayed for one winter and some for as long as five years.



It is estimated that there were about 1,200 Jersey people in Canada in 1837. The Jersey-based cod trade and maritime business generally declined rapidly after the 1860s, both contributing to and suffering from the bank failures in Jersey. It is understood that Jèrriais was widely spoken, to the extent that it was the dominant language in some areas, and that it survived into the middle of the 20th Century.



In the same way as economic migrants to Jersey have married local people and made their homes in the Island so Jersey's own economic migrants settled on the east coast of Canada where their descendants live today. People from Jersey seemed to have a disproportionate influence on local life. The *Encyclopaedia of Canada's people* records –

People from Jersey and Guernsey also dominated local political life, where their influence far surpassed their meagre numbers but was an accurate representation of their social position. They were mayors, town councillors, sheriffs, custom agents, justices of the peace, school commissioners, secretaries of municipal councils and school boards, postmasters and telegraph operators. Living among largely illiterate populations, the Channel Islanders appear to have benefited from their few years of education.

Today, there is a Gaspé-Jersey-Guernsey Association, dedicated to the collection of artefacts, documents and other information relative to the history of the early settlers from the Channel Islands on the Gaspé Coast. Its genealogical records and reference books are housed in the Kempffer House Genealogical Room in New Carlisle, Quebec.

Economic migration to Australia and New Zealand in the 19th Century

During the 1850s and 1860s, the economic downturn in Jersey led to emigration to Canada (separate from the Jersey cod fishing Industry), the USA and, following the discovery of gold, to Australia. However, unlike in Canada there were no Jersey "settlements" established. Between 1883 and 1885 some 500 Jersey people emigrated to New Zealand, influenced by the depressed local economy and the offer of free passage to New Zealand as part of that territory's policy of rapidly increasing its population. There has been a steady flow of migrants from Jersey to Australia and New Zealand subsequently and there are significant numbers of people in both countries with Jersey ancestry, many of whom feel a significant affinity with the Island.

Emigration to England

The economic downturn in the second half of the 19th Century led to significant emigration of Jersey people to England. By 1881 it is estimated that 10,000 Jersey-born people were living in England and Wales, a number equal to 27% of the Jersey-born population living in Jersey. By 1921 these figures had increased to 13,000 and 37%. A reasonable estimate for the proportion today is 50%, that is 26,000 Jersey-born people living in England compared with 52,000 living in Jersey.

In the Second World War the German occupation led to many Jersey people becoming refugees in England. The 1951 census report estimated that the Jersey population fell by 10,000 between mid-1939 and the end of 1940. Most of those evacuated immediately prior to the German occupation were taken to the North West, particularly the towns of Barnsley, Bradford, Brighouse, Bury, Doncaster, Halifax, Huddersfield, Leeds, Nantwich, Oldham, Rochdale, St Helens, Stockport and Wakefield. Some also went to Glasgow while others settled in the South West. Following the



Liberation, most Jersey people returned home although some chose to remain in what had become their new homes.

New Jersey

As its name suggests, the American state of New Jersey is named after Jersey. The official website of the State has little to say on the Jersey connection –

Around 1524, Giovanni de Verrazano became the first European to explore New Jersey. He sailed along the coast and anchored off Sandy Hook. The colonial history of New Jersey started after Henry Hudson sailed through Newark Bay in 1609. Although Hudson was British, he worked for the Netherlands, so he claimed the land for the Dutch. It was called New Netherlands.

Small trading colonies sprang up where the present towns of Hoboken and Jersey City are located. The Dutch, Swedes, and Finns were the first European settlers in New Jersey. Bergen, founded in 1660, was New Jersey's first permanent European settlement.

In 1664 the Dutch lost New Netherlands when the British took control of the land and added it to their colonies. They divided the land in half and gave control to two proprietors: Sir George Carteret (who was in charge of the east side) and Lord John Berkley (who was in charge of the west side). The land was officially named New Jersey after the Isle of Jersey in the English Channel. Carteret had been governor of the Isle of Jersey.

Sir George Carteret (1609-80) is the key person in understanding the links between Jersey and new Jersey. His role is described in the article [The New Jersey Venture](#), published in the 1964 *Société Jersiaise Bulletin* on which this section is based. Sir George was part of the de Carteret family, a long-established prominent Jersey family. He was the nephew of Sir Philippe de Carteret, Bailiff and Lieutenant Governor of Jersey from 1627 to 1643. George (who dropped the de from his name) made his name as an English naval officer. When the English Civil War broke out in 1642 it was George who ensured that Jersey remained loyal to the Crown. In 1643 George succeeded Philippe as Bailiff and in effect became dictator of the Island. He was knighted in 1644 and appointed Vice Admiral of Jersey, while at the same time operating as a privateer. In 1647 and 1648 King Charles I was trapped in the Isle of Wight. Carteret made unsuccessful attempts to rescue him and bring him to Jersey. In 1649 Charles I was executed. Jersey duly proclaimed his exiled son, Charles II, as King. Charles sought refuge in Jersey in 1649 and was financially supported by the Island. In 1650 he left Jersey for Scotland and gave Carteret a group of rocky islands, Smith's Isles, off the coast of Virginia. Carteret named them New Jersey, but an attempt to occupy them failed.

In 1651 the Civil War ended, and Oliver Cromwell was proclaimed Lord Protector. The Commonwealth attacked Jersey and Carteret surrendered in 1651 and was removed from office. The Monarchy was restored in 1660 and the King immediately rewarded Carteret by appointing him Vice Chamberlain of the Royal Household and Treasurer of the Navy and awarded him manors in Cornwall and Devon.



In March 1664 the King awarded his brother, James Duke of York, the land that is now New York and New Jersey. The Duke immediately granted Carteret and a fellow courtier, Sir John Berkeley, the areas of land between the Hudson and Delaware rivers, the boundaries of which are those of New Jersey today. Sir George never visited New Jersey. He and Berkeley appointed Captain Philip Carteret (son of Sir George), just 26 years old, as Governor. Philip arrived in New Jersey in August 1665 and named the landing point Elizabeth, after Sir George's wife, and proclaimed it the capital.

Philip had to face conflict from some of the settlers. In 1672 James Carteret, the second son of Sir George, arrived in the province and became the focal point for discontent. Philip saw off this challenge, but in 1673 the Dutch captured New York and took over New Jersey, which they named New Orange. This was short-lived, the two provinces reverting to England the following year.

Philip governed the whole of New Jersey until 1674 when Berkeley sold his interest leaving Carteret governing what was known as East Jersey. Philip died in 1682 and East Jersey was sold under Sir George's will. New Jersey was duly settled by immigrants from the British Isles, but as far as is known none were from Jersey. In practice Jersey's association with New Jersey lasted just 16 years. There are few place names in New Jersey named after Jersey. There is a borough called Carteret in the north east corner of the state, but it was given its name only in 1922. Jersey City is just across the Hudson River from New York and today is the second most populous city in New Jersey, with a population of about 260,000. The city dates back to 1804 when former US Treasury Secretary, Alexander Hamilton, helped to create the Associates of the Jersey Company to lay the groundwork for Jersey City by private development. Jersey City was formally incorporated in 1820.

On 28 January 2020 St Helier formally twinned with Trenton, the capital of New Jersey. This followed a visit to Jersey by the Mayor of Trenton in 2019. During that visit a new open space in the Jersey International Finance Centre was named Trenton Square.

Jersey's international status

It is accepted that the UK has responsibility for defence matters and that the Crown Dependencies do not have their own defence capabilities. The UK government does have responsibility for the international relations of the Crown Dependencies but in practice it is recognised but they have their own distinct identity. Jersey's position was formally recognised in a 2007 document agreed by the British and Jersey Governments - *Framework for developing the international identity of Jersey*. The purpose of the document was "to clarify the constitutional relationship between the UK and Jersey, which works well and within which methods are evolving to help achieve the mutual interests of both the UK and Jersey". The three key provisions of the framework are –

- Jersey has an international identity which is different from that of the UK.
- The UK will not act internationally on behalf of Jersey without prior consultation.
- The UK recognises that the interests of Jersey may differ from those of the UK, and the UK will seek to represent any differing interests when acting in an international capacity.

The UK Government entered into similar arrangements with the Isle of Man and with Guernsey.



Jersey and the other Crown dependencies can negotiate international treaties if they have been authorised by the UK Government to do so – a process known as “entrustment”. When the UK ratifies any international treaty, this only includes the Crown Dependencies with their consent. The UK Government has a duty to consult the Crown Dependencies at an early stage on their wishes.

Only sovereign states can be full members of international organisations. Jersey is therefore included in the UK’s membership of the United Nations and the Commonwealth.

There is a Jersey branch of the Commonwealth Parliamentary Association. Branches can be formed within legislatures of members of the Commonwealth and their dependencies.

Jersey is a member of the Assemblée Parlementaire de la Francophonie, an organisation for parliaments which have French as an official language.

Jersey is a member of the British-Irish Council comprising the UK, the devolved administrations in Scotland, Wales and Northern Ireland, the Crown Dependencies and the Republic of Ireland. This was established under the 1998 “Good Friday Agreement”, which was the culmination of the peace process in Northern Ireland. Its aim is to “promote the harmonious and mutually beneficial development of the totality of relationships among the peoples of these islands”.

Jersey is a member of the British-Irish Parliamentary Association, established in 1990, the membership of which mirrors that of the British-Irish Council.

External relations policy

In the immediate post-War period, there was little need for Jersey to have an external relations policy. This changed largely for two related reasons –

- The most significant political development for Jersey in the post-War period was Britain’s accession to the European Economic Community in 1972. Jersey had grown prosperous through its strong connections to the United Kingdom while being able to be sufficiently different through using its tax system to attract people and business to the Island. Britain’s entry into the European Economic Community threatened this position. If Jersey was inside the European Economic Community, then much of its autonomy would be lost but if it was outside the Community then the close economic links with Britain on which it depended would be severely damaged. In the event, a special arrangement was negotiated which gave Jersey and the other British Crown dependencies the best of both worlds, that is being within the common external tariff of the European Community but otherwise outside of the single market provisions. Subsequently, Jersey has needed to keep abreast of EU developments, particularly those relevant to its financial services industry. Together with Guernsey it established an office in Brussels to strengthen its capability in this respect. Britain’s exit from the EU has similarly required a great deal of work to ensure that the Island’s interests were recognised and protected, with fishing matters presenting particularly difficult challenges.
- Jersey’s development as an international financial centre together with a growing trend for financial services to be regulated according to internationally agreed standards.

Jersey's external relations is the responsibility of the Minister for External Relations. Policy is set out in its Global Markets Strategy. The strategy is summarised as follows -

The objectives of the Global Markets Strategy are to increase Jersey's visibility, improve access to decision-makers and facilitate business flows with priority global markets – leading to positive contributions to the Island's jobs and growth objectives. The strategy also seeks to maintain and strengthen Jersey's reputation as a high-value, well-regulated, international finance centre of choice for target markets in Africa, Asia, the Middle East and North America.

The strategy places emphasis on the importance of building broad-based and sustainable government-to-government relationships across a range of common interests. The strategy therefore proposes a tailored approach to Jersey's engagement with priority global markets based on careful identification of shared interests and opportunities for cooperation.

The strategy embraces Asia, Africa, North America and the Middle East. It is delivered by a combination of bilateral, international agreements and multilateral approaches. The bilateral approach embraces –

- Negotiation and conclusion of bilateral international agreements
- Identification of levers and drivers
- Repeated inward and outward visits
- Effective use of the Foreign, Commonwealth and Development Office (FCDO) platform – by developing strong working relationships with British diplomatic personnel in British High Commissions and Embassies in priority global markets
- A long-term and strategic approach – involving the patient cultivation of long-term relationships based on trust
- Cross-government coordination of bilateral cooperation initiatives – to strengthen government to government relationships, commercial ties, and people-to-people links.

The strategy places great importance on expanding Jersey's network of international agreements with priority jurisdictions. A major priority are double tax arrangements and bilateral investment treaties. In addition, and where relevant, Jersey actively seeks to negotiate and conclude Asset Recovery Agreements and bilateral Memorandums of Understanding, to provide a framework within which to further knowledge-sharing and international cooperation across a range of sectors, such as tourism, conservation, agriculture, heritage, digital, culture and education.

At multilateral level the strategy embraces -

- Building on Jersey's history of active engagement with Commonwealth institutions, such as the Commonwealth Parliamentary Association, the Commonwealth Enterprise and Investment Council, and Commonwealth Games
- With the OECD, continuing engagement on tax transparency and good governance
- Developing stronger ties to United Nations institutions in areas of interest/expertise e.g. asset recovery
- Attendance at annual meetings of the World Bank / International Monetary Fund and participation in the Commonwealth Finance Ministers' Meeting



- Participation in World Economic Forum regional fora and contribute to WEF's Partnering Against Corruption Initiative.

Jersey's relationship with the EU

Prior to the UK's departure from the European Union (EU), Jersey's relationship with the EU was set out in Protocol 3 of the UK's 1972 Accession Treaty. In practice, this meant the Island was treated as part of the European Union for the purposes of free trade in goods, but otherwise was not a part of the EU.

Following the UK referendum on EU membership, one of our key objectives was to protect, as far as possible, the Island's key interests – including our relationship with our European partners.

Jersey's relationship is now enshrined in its membership of the UK-EU Trade and Cooperation Agreement (TCA), which was reached prior to the end of the Transition Period on 31 December 2020. This means that Jersey goods bound for the EU are treated as they would if they come from the UK.

In addition to the practical implications of the UK's exit, Jersey has maintained long-standing relationships – politically, economically and culturally – with our closest French neighbours and partners across the EU.

The Channel Islands Brussels Office (CIBO) makes sure that Jersey's interests are promoted in Europe, and acts as the central engagement point with Brussels and within other multilateral fora.

[Channel Islands Brussels Office website](#)

The Bureau des Îles Anglo-Normandes promotes the interests of the Channel Islands in France.

Located in Caen, its mission is to promote and help political, economic, cultural, educational and operational links with the French government and its institutions at departmental, regional and national levels.

[Bureau des îles Anglo-Normandes website](#)

Customs Arrangement with the United Kingdom

On 26 November 2018 the Minister for External Relations signed the Jersey-UK Customs Arrangement, which establishes a customs union between Jersey and the United Kingdom.

The two essential elements of establishing a customs union are that the parties agree:

- not to impose import tariffs for goods passing between themselves
- to impose a common external tariff on goods from places outside the customs union
- The following was also agreed between the parties:



- tariff free movement of all types of good between Jersey and the UK, with no quantitative restrictions on imports
- the ability to impose prohibitions or restrictions at border for specific reasons
- participation in a new Joint UK-CD Customs Committee
- retention of Jersey's autonomy in fiscal matters
- autonomy in maintaining local customs IT systems

[Jersey UK Customs Arrangement](#)

The Jersey-UK Customs Agreement came into effect on 1 January 2021, following the end of the Transition Period and the UK's formal departure from the EU.

MoU with the UK on the UK-EU Trade and Cooperation Agreement

On 1st March 2021 Jersey signed a Memorandum of Understanding (MoU) with the UK agreeing dispute resolution mechanisms between the UK and Jersey in respect of the UK-EU Trade & Cooperation Agreement (TCA).

The objective of the MoU is to provide a governance backdrop to Jersey's participation in the TCA which came into effect on 1 January 2021

[MoU with the UK on the UK-EU Trade and Cooperation Agreement.pdf](#)

Jersey overseas aid

Jersey runs its own overseas aid programme. The programme is overseen by the Minister for International Development, who heads a six-person commission. [Jersey Overseas Aid's](#) annual budget is currently 0.25% of Jersey's GVA, £12.43 million in 2020. It has four primary funding themes –

- international development grants
- emergency and disaster relief
- Jersey overseas charities
- community works programmes and bursaries.

The development grants account for most of the budget. They fund multi-year projects run by major charities and concentrate of carefully chosen themes. The [Annual Report](#) for 2019 gives details –

- Financial inclusion - a four-year £8 million collaboration designed to increase access to basic financial services such as loans, savings, money-transfers and insurance to struggling families currently excluded from formal banking in Zambia, Rwanda and Sierra Leone.
- Conservation livelihoods, based on the premise that protecting the environment can be a virtuous circle if programmes, are designed to tie human well-being and conservation together. Programmes are currently running in Malawi, Zambia and Ethiopia.
- Dairy for development. The largest single development grant awarded in 2019 was for a dairy project, based in Rwanda. The Annual report states: "Dairy initiatives represent the agency's flagship projects; not only do these life- changing interventions utilise Jersey's internationally renowned Jersey cow, they also use the island's considerable expertise to advance the wellbeing of thousands of households. The island is uniquely well-placed to assist farmers,



charities, cooperatives, extension workers and national governments with improving the quality and profitability of milk production.”

Sport

In respect of sport Jersey operates in very different ways in different sports ranging from competing as an independent nation to being treated as part of England. It is not unique in this respect; sporting boundaries are often different from political boundaries and are set on a sport-by-sport basis. For example, England, Scotland, Wales and Northern Ireland compete as separate nations in world and European football tournaments. In rugby union, the “six nations” includes the team of Ireland, comprising part of the UK and the Irish Republic.

Jersey competes as a nation in international men’s cricket, its team winning the international division 5 championship in 2019.

Bowls and Petanque are particularly strong in Jersey and the Island competes in European and world championships.

Since 1958, Jersey has competed as a team in the Commonwealth Games, responsibility for which rests with the [Commonwealth Games Association Jersey](#). Jersey athletes compete for Team GB in the Olympics, an anomalous situation since the Islands of Bermuda and Asuba, which have no greater autonomy than Jersey, compete as separate Olympic nations.

Jersey was a founder member in 1997 and has since been an active participant in the [International Island Games](#), held every two years for islands throughout the world. Jersey hosted the games in 2015. Jersey also participates in the youth games known as the Jeux des îles.

Jersey has a prominent rugby team, the Jersey Reds, which competes in the English championship. There is a general understanding that Jersey-born players are eligible to play for any of England, Scotland, Ireland and Wales.

Jersey football teams compete in the English league system and the FA Cup. Jersey has sought to become a member of the Union of European Football Associations (UEFA), hoping to follow in the footsteps of Gibraltar and compete on the international stage. However, its application was rejected on the grounds that Jersey is not seen as an independent nation by the UN. This argument overlooks that neither are Gibraltar or the Faroe Islands.

[Jersey Sport](#), established in 2016, is an independent body tasked with championing sport and active living in the Island. One of its important roles is to administer travel grants, funded by the Government, which enable sports teams to travel to England and further afield.

Jersey's Economy

Structure of the economy

There are several different ways of measuring the size and structure of an economy. For Jersey, the most relevant is “gross value added” (GVA), which is the value of the output less the value of inputs to produce that output. Table 1 shows the gross value added by sector in 2019.

Table 1 Jersey, Gross Value Added by sector, 2019

Sector	Gross value added £m	Percentage
Financial services	1,892	39.5
Other business activities	560	11.7
Hotels, restaurants and bars	205	4.2
Public administration	419	8.6
Manufacturing	49	1.0
Rental income of private households	760	15.5
Electricity, gas and water	64	1.3
Agriculture	59	1.2
Wholesale and retail	322	6.4
Construction	355	7.0
Transport, storage and communication	184	3.5
Total	4,870	100.0

Source: Statistics Jersey.

The table shows that financial services dominate the economy, accounting for 39.5% of gross value added. Agriculture, one of Jersey's traditional industries, accounted for just 1.2% of GVA. Hotels, bars and restaurants accounted for 4.2%. Part of this represents the tourist industry, which at one time account for a major sector of the economy (Statistics Jersey), but much of it reflects consumption by residents. Rental income of private households needs some explanation. It is a theoretical concept and is basically what homeowners would pay themselves to rent their property. No actual payments are made. The concept enables meaningful international comparisons to be made.

A second way of looking at the economy of Jersey is to examine the distribution of the working population. Table 2 shows the figures.

Table 2 Jersey, Distribution of the working population, December 2020

Sector	Employment	Percentage
Financial and legal activities	13,510	22.5
Miscellaneous business activities	5,890	9.8
Hotels, restaurants and bars	4,440	7.4
Manufacturing	990	1.4
Agriculture and fishing	980	1.6
Wholesale and retail	7,060	11.8
Construction and quarrying	6,110	10.2
Transport and storage	1,950	3.2
Utilities and waste	710	1.2
Private education, health and other services	8,130	13.6
Public sector	8,530	14.2
Total	60,000	100.0

Source: Statistics Jersey.

A word of caution is needed here. The table shows the position in December 2020, when Covid-related restrictions were in force. This means that the figures, particularly for hotels, restaurants and bars, are distorted to some extent.

There is a reasonable correlation between the two tables. However, it will be noted that financial services accounted for a much higher proportion of GVA than of the working population. This largely reflects the fact that pay in the financial services sector is higher compared with some other sectors.

Financial services

Jersey is one of a number of international financial centres (IFCs), an expression that is best defined as a physical area from which financial services are provided for people and activities in other countries. A successful IFC has to be attractive to businesses not operating in the jurisdiction. In practice, this means that an IFC has to meet a number of inter-related requirements, predominantly relating to stability and resources -

- Political stability, that is no prospect of a radical change in the governance of the jurisdiction.
- The rule of law, that is a skilled and independent judiciary, free from corruption and political influence, combined with a legal system that provides a reasonable degree of certainty and efficiency.
- Financial services are heavily regulated activities. IFCs need to strike a balance between having attractive regulatory regimes in relation to other financial centres while at the same time operating within internationally accepted norms.
- Regulatory stability. The key features of the regulatory regime need to be stable, with any changes being introduced only after very careful consideration and with an adequate lead-in time and also that regulatory actions should not be subject to political interference.
- A tax regime that is low tax rather than no tax, stable and predictable and meeting international standards. It is particularly important that there should be no retrospective taxation.
- Economic stability, broadly speaking an inflation rate around the norm for comparable jurisdictions and a relatively stable exchange rate.
- Appropriate infrastructure including modern offices, high quality and reliable electronic communication links and good international air links.
- Access to talent, which requires an open and welcoming environment for immigrants and an education system that produces the many qualified people needed to fill lower and middle level positions.

No IFC fully meets all of the requirements, but Jersey scores very well in respect of each of them. It also has the advantage of being a British Crown Dependency, a status that reinforces its political stability. These factors explain why over a period of many years Jersey has been successful in attracting international business.

Jersey's finance centre activity covers several different types of finance (figures apply to the end of 2021 -

- Banking. 21 banks operate in Jersey. All are major banks, with headquarters in the UK and other leading financial centres. The total value of banking deposits held in Jersey increased from £127.2bn to £131.4bn during Q3 2021.
- Administration of regulated collective investment funds. Jersey has developed particular expertise in fund administration. The net asset value of regulated funds under administration increased by £3.8bn from £436.3 to £440.1 during Q3 2021.
- Investment management. £28 billion of investments were directly managed.
- Company administration. The number of live companies on the register stood at 34,550 at the end of the third quarter of 2021.
- Insurance.

The finance industry also recognises the unique potential for the island to become a leading sustainable international finance centre. In 2020, Jersey Finance published its 'Jersey for Good – A Sustainable Future' its report, outlining the Island's guiding principles and commitment to becoming a sustainable finance centre. Recognising that Jersey is well positioned to respond to trends in sustainable financing, the report set out specific recommendations and the vision that by 2030, Jersey will be recognised as the leading sustainable international finance centre in the markets it serves.



The Jersey Government has been determined that the Island strikes the right balance between being competitive in a very competitive market and operating in accordance with the highest international standards. It achieves this by ensuring that appropriate legislation is in place and most importantly by having a strong independent regulator, the Jersey Financial Services Commission.

Finance centre activities are sometimes controversial – in the jurisdictions in which they are based and globally. Jersey is not alone in having to justify its finance industry, and it does so by participating fully in international fora, including being reviewed by international organisations, for example on money laundering controls. It also publishes a great deal of information outlining its key credentials on tax and transparency. An important role is played here by Jersey Finance, the promotional body for the industry.

The importance of finance to the Island's economy is well illustrated in the two tables above – 22.5% of the labour force and 39.5% of GVA. Perhaps a more important indicator is the proportion of tax revenue derived from finance centre activity. This is estimated at over 70%. Most of this derives not from the taxation of businesses but rather of the personal tax paid by people employed in the businesses.

To consider the wider implications of Jersey's finance centre activity, Jersey Finance (the industries promotional body) commissioned the consultancy Capital Economics to evaluate the economic, financial and fiscal linkages between Jersey and the United Kingdom. The resultant report Jersey's Value to Britain was published on October 2016. Its conclusions included -

- Jersey is a conduit for an estimated almost £500 billion of foreign investment into the United Kingdom, which is equivalent to 5% of the total stock of foreign owned assets in the country.
- Although Jersey benefits from the United Kingdom's defence and foreign representation activities to the tune of £55 million per annum on a pro rata basis activity in Jersey generates around £5.0 billion in United Kingdom tax revenue per annum.
- Jersey supports an estimated 250,000 British jobs, of which 190,000 from foreign investment alone, and adds £14 billion to the United Kingdom economy.
- Jersey Finance's 'Jersey's Contribution to Global Value Chains' report sets out to quantify the Island's economic footprint worldwide. The report can be found [here](#).

Agriculture and fishing

At first sight agriculture and fishing play a minor role in the Jersey economy, accounting for under 2% of output and employment. However, these bare figures understate the importance of these sectors to the economy and to society. Over half of land in Jersey is cultivated, so many areas of the Island have a rural feel. Cultivation contributes to the appearance of the Island, which makes it attractive to visitors and as a place in which to live.

The Jersey cow has a worldwide reputation as a result of its delightful appearance and the quality of its milk. The breed has remained pure though a recently relaxed ban on imports of other breeds that dates back to 1763. Since 1860 the lineage of every cow in Jersey has been recorded in the herd book. Today there are large herds of Jersey cows in many countries. In the USA and New Zealand, it is estimated that Jerseys account for about 10% of milking cattle, about 850,00 cows in the USA and 450,000 in New Zealand. Worldwide there are about 4 million Jersey cows. Today in Jersey there are



21 herds of Jerseys with 2,631 milking cows out of a total of 4,430. Jersey Dairy is responsible for collecting milk from farmers and turning it into milk products – butter, ice cream and yoghurt as well as milk itself. Sales of milk to Jersey Dairy are worth about £16 million a year. Milk products are exported to a number of countries. 150 people are employed on cattle farms and a further 70 at Jersey dairy.

Jersey new potatoes are another industry of huge historical significance. Today, potatoes are the main crop grown in the Island but accounting for just 478 vergées, 1.5% of the 32,748 cultivated vergées. Exports are about £30 million a year.

Fishing is another traditional industry that remains important today. In 2019 1,696 tonnes of shellfish were produced of which 1,350 tonnes were farmed. Whelks, oysters, mussels, scallops, crabs and lobster are the main varieties. Much of the shellfish has been exported to France. The UK's exit from the European Union has had significant implications for the industry which are still being worked through.

Jersey also has one vineyard, which produces wines, spirits and other products and there are tea gardens and medicinal cannabis cultivation.

Tourism

Tourism was the Island's principal industry for much of the post-War period. The climate, beaches, cheap alcohol and tobacco, low-cost ferry travel for British Rail employees and relative ease of accessibility from the UK combined to make Jersey an attractive destination for families. However, over time the growth of cheap air travel and package holidays have made other destinations comparatively more attractive. In 2017 it is estimated that there were 727,000 visits to the Island, compared with over 1,000,000 in 1997. 580,000 were holidays, 80,000 were business visits and 100,000 were visits to families and friends. In addition, there were 109,000 day trips. On-Island expenditure totalled around £250 million. The number of bed spaces was estimated at 10,000.

Other business activities

The two tables show that around 10% of the economy was accounted for by "other business activities". This covers a variety of activities, increasingly in respect of technology. An important role in this respect is played by Digital Jersey, which describes itself as –

The Government-backed economic development agency and industry association dedicated to the growth of the digital sector. We develop strategies to help on-Island industry thrive and remove barriers for inward investors choosing Jersey as their world-leading base for digital innovation.

It is estimated that there are over 500 specific digital economy businesses in Jersey, employing 2,750 people and that the sector has been growing four times as fast as the economy as a whole.



Industry bodies

Business in Jersey is well represented by a number of industry bodies. Jersey Finance and Digital Jersey have already been mentioned because of the key roles that they play.

The Jersey Chamber of Commerce, established in 1768 (and so is the oldest in the English-speaking world) is the largest independent business membership organisation in Jersey, representing businesses of all sizes and sectors. It hosts networking events and has an input into Government policy through a number of specialist committees.

IoD Jersey, founded in 1966, has over 600 members from all sectors of the business community. It seeks to influence Government policy and runs a professional training programme to help promote high standards of corporate governance.

Jersey Business is not a representative body but rather provides free, independent, confidential advice and support to businesses and start-ups in Jersey.

There also a number of sectoral bodies. Jersey Finance has already been mentioned. Others include-

- The Royal Jersey Agricultural and Horticultural Society, founded in 1883, represents Jersey's traditional farming sector. It also runs an educational programme and a showground.
- The Jersey Hospitality Association represents the hospitality and tourism industry.
- Locate Jersey which encourages new businesses and high net worth immigrants to move to Jersey

The Fiscal Policy Panel

The Jersey Government's Fiscal Policy Panel provides independent economic advice on tax and spending policy. The Panel comprises three eminent UK economists and is currently chaired by Dame Kate Barker. It publishes an annual report and regular "economic assumptions". These publications provide the best regular analyses of the state of the Jersey economy.

Jersey's finances

Jersey's status as a British Crown Dependency means that it is financially independent. It needs to raise revenue through taxation, levies and charges sufficient to finance Government expenditure.

Tax system

Jersey has a tax system that is simple and stable. There are not the frequent changes in the structure or rates of taxation that are common in many other jurisdictions.

Personal income tax has been levied at a standard rate of 20% since June 1940. A system of "marginal relief" exists which reduces the amount of tax paid by lower earners. The 2022 threshold for paying tax is £16,550 for a single person, £26,550 for a married couple with an allowance of £3,060 for each child. By comparison, in the UK the single person threshold is £12,740, the basic rate of tax is also 20% but higher rates of 40% are levied on income over about £50,000 and 45% on incomes over



£150,000. In common with many jurisdictions, Jersey offers certain tax incentives to high-net-worth immigrants who can offer economic and social value to the island.

Jersey does not tax capital gains nor inheritance. The Goods and Services Tax rate is 5% and is broadly applied with few exemptions. The turnover threshold for registering for GST is currently £300,000.

Companies are taxed on their profits at the rate of 20% for a small number of businesses including , for example, utility companies. Certain financial- services businesses are taxed at 10%. The standard rate of income tax for the majority of companies is 0% helping to ensure the tax neutrality of much of the business on which Jersey's international competitiveness relies.

Jersey is part of a customs union with the United Kingdom and the two other Crown Dependencies operating a common tariff for levying customs duties, where due. Excise duties are levied certain fuels (including petrol and diesel); alcohol; and tobacco. A number of other levies, taxes and duties exist covering, for example, property transactions; Vehicle Emissions (on first registration of vehicles); and a Long-term Care contribution.

Government finances

Like other nations Jersey has to raise taxes to finance public expenditure. Jersey does not publish public expenditure figures by activity, but rather by government department. Table 1 shows the figures for 2020.

Table 1 Public expenditure by department, 2020

Composition	Amount £m	Percentage
Health and community services	240	25
Customer and local services	207	23
Children, young people, education and skills	153	17
Justice and home affairs	72	8
Treasury and Exchequer	67	7
Infrastructure, housing and environment	63	12
Office of the chief executive	35	4
Chief operating officer	30	3

States Assembly and other bodies	28	3
Overseas aid	12	1
Strategic policy, planning and performance	12	1
Total	919	100

The 2020 figures were significantly affected by the pandemic. Covid related expenditure was £190 million. The major components of this were a payroll co-funding scheme (£98 million – included in the customer and local services figures in the table), a test and trace scheme (£12 million), and economic stimulus programme (£12 million) and a Nightingale hospital (£10 million).

Capital expenditure in 2020 totalled £173 million, made of –

Expenditure of housing by Andium Homes, the Government-owned social housing provider	£60 million
Liquid waste facility	£21 million
Roads, drainage and sea defences	£11 million
Hospital development	£11 million
Housing and office development by Jersey Development Company	£10 million
Airport and harbour	£6 million
Total	£173 million

Income raised in 2020 comprised –

Income tax paid by individuals	£463 million
Income tax paid by companies	£120 million
Impots	£74 million
Goods and Services Tax (GST)	£94 million
Stamp duty	£37 million



Other	£64 million
Total	£852 million

“Other income:” is largely accounted for by a contribution of £30 million from Andium Homes, the Government-owned social housing provider (which can be regarded as the equivalent of notional interest on the value of the housing stock transferred to it) and dividends.

The pandemic had a significant effect on tax revenue as a result of reduced economic activity. Income tax paid by individuals fell from £586 million in 2019 to £463 million in 2021.

Reserves

While Covid caused a significant budget deficit in 2020 the Government’s policy is to fund revenue expenditure from income rather than borrowing and to hold reserves in a number of funds.

The Strategic Reserve Fund was established in 2005 to be used in exceptional circumstances to insulate the Island’s economy from severe structural decline or from major natural disaster. The fund totalled £968 million at the end of 2020.

The Stabilisation Fund was established in 2005. The intention is to build up the fund in buoyant economic conditions and make payments from it at times of economic downturn. £50 million was paid into the fund in 2019, almost all of which was spent in 2020 in response to the pandemic.

There is also an Insurance Fund of £7 million and a number of relatively small funds for specific purposes.

Social security

Jersey has its own social security system, providing the full range of benefits. The basic pension is £226 a week. Both employers and employees pay a contribution rate of 6%. In 2020 contributions totalled £174 million and benefits were £257 million. The contribution figure was affected by a payment holiday introduced as a consequence of the pandemic. The social security fund had a balance of £76 million. Unlike in the UK State pensions are not simply met by current contributions. At the end of 2020 the reserve fund to meet future pension liabilities totalled £2,093 million.

In addition, there is an income support scheme funded by general taxation.

The funding of long-term care is a challenge for all countries. Jersey operates a long-term care scheme under which care cost in excess of £58,230 are met by a fund, paid for by an additional tax rate of 1%. In 2020 contributions totalled £36 million and benefits £54 million. The fund totalled £37 million at the end of 2020.

There is a separate Health Insurance Fund. In 2020 contributions, which are part of social security contributions, were £35 million and benefits £54 million. The fund totalled £108 million at the end of 2020.

Government accounts

The Island's finances are documented in detail in the Government's [Annual report and Accounts](#)

Jersey's Parishes

Jersey is divided into 12 parishes: Grouville, St Brelade, St Clement, St Helier, St John, St Lawrence, St Martin, St Mary, St Ouen, St Peter, St Saviour and Trinity. They are an integral part of Jersey's heritage and its society today.



Origin and growth of the parishes

The parishes date back to the 11th Century, if not before, and probably originally evolved around a parish church and with boundaries reflecting natural features such as streams and water sheds. The boundaries have subsequently changed little. It will be noted that each of the parishes has direct access to the sea, probably reflecting a clear intention, although in the case of St Saviour this is no more than a token.

The first substantive "census" in Jersey was the 1331 Extente, sometimes referred to as the Jersey Domesday Book. The Extente clearly shows that the parishes were firmly established. Jersey was organised by parish, ownership of particular bits of land were identified and each parish had named officers. The Extente also suggests the population of the parishes was in a fairly narrow range from about 500 to 1000. This may well reflect the initial intention of having administrative areas that were equally manageable in terms of population.



Over the years the distribution of the population between the parishes has changed markedly. St Helier is now by far the most populous parish while Trinity in particular has shown comparatively little population growth in the last 700 years.

Population density is highest in the southern parishes often concentrated along the routes of the two old railway lines, 3,541 people per square kilometre in St Helier, 2,142 in St Clement, 1,471 in St Saviour, 803 in St Brelade and 594 in Grouville. By contrast, the figures in the country parishes are significantly lower at 253 in Trinity, 267 in St Mary and 270 in St Ouen. Similarly, there are marked differences in land use between the parishes. Over half of land in St Helier comprises built environment with St Clement and St Saviour also having relatively high proportions. By contrast, the country parishes have over 60% of land under cultivation and also the highest proportions of land in the form of natural environment (38% St Brelade, 23% in St Ouen and 21% in Trinity).

Organisation of the parishes

The role of the parishes with links to websites of the individual parishes is set out in a [page](#) on the Government website.

The parishes all have the same structure. Each parish is divided into a number of Vingtaines (Cueillettes in St Ouen).

The principal officer of the parish is the Connétable (also called the Constable), who by virtue of that office is also a member of the States Assembly. The Connétables are elected, the electorate being the same as for the other members of the States Assembly. Each parish has two Procureurs de Bien Public, elected at the parish assemblies, and who act as public trustees. They maintain an oversight of parish finances and represent the parish in the care of parish property. Each parish also has a Roads Committee and Roads Inspectors.

For many centuries Jersey has had a parish-based honorary police system headed by the Connétable. Officers are elected as Centeniers, Vingteniers and Constable's Officers, with various duties and responsibilities. Centeniers have the power to investigate a reported incident to determine whether there is sufficient evidence to justify a charge and if so whether the public interest requires a prosecution or whether the matter can be dealt with in some other way.

Each parish has a rector appointed by the Crown who is the head of the established church within the parish. The rector is supported by two surveillants (churchwardens) and two almoners.

The parish assembly is an integral part of the way the parishes operate. People registered as electors in public elections and ratepayers are entitled to attend assemblies. The parish assemblies elect the officers (other than the Connétable), are responsible for the care of the roads and the promotion of local improvements, for setting rates and considering licencing applications. The Connétable presides over the parish assembly for these purposes while the rector presides when ecclesiastical matters are dealt with.

Each parish has a parish hall in which the officers of the parish are based. In the country parishes each is at the centre of a village as is the parish church, the rector being an officer of the parish.

The Visite du Branchage and the Visite Royale

The Visites du Branchage are a longstanding part of the parish system. Branchage literally means branches. The branchage law, which dates back to 1914, requires that any vegetation that overhangs roads or footpaths must be cut back, so that there is a clearance of 12 feet over roads and eight feet over footpaths, and that all trimmings are cleared. Twice a year, in the three weeks commencing 24 June and 1 September, the parish officers, led by the Connétable, check that land occupiers have completed the branchage in accordance with the law. These inspections are called the Visites du Branchage.

Twice a year the Royal Court pays a visit to a parish to examine the parish's accounts and to be taken on a tour of parish roads, during which it may be asked to rule on disputes such as the encroachment of a tree on the public highway. The most recently sworn in Advocate of the Royal Court normally acts as arboreal defence counsel. The Visite Royale is known to date back to when Jersey was part of the Duchy of Normandy.

The individual parishes



Map detailing the vingtaines of Jersey

Vingtaines are a historic form of administration used in Jersey for political purposes such as elections.

Parish Emblems

These crests were only introduced 100 years ago as part of the decorations erected to celebrate a Royal visit, but they soon found favour and are a settled part of the island scene today.



St Brelade

The parish emblem is a fish. Legend has it that St. Brelade prayed for land whilst searching for the Islands of the Blest. An island arose from the sea on which he celebrated Easter. As he departed so did the island. It was an enormous fish sent in answer to his prayers.



St Helier

The two axes commemorate the beheading by Saxon Pirates in AD 555 of St Helier, Patron saint of Jersey.



St Peter

The crossed keys of Heaven and Hell have always been the symbols of St Peter. The Parish church was dedicated to St Pierre dans le Désert, recognised by the gold border to the crossed keys.



Grouville

Louis XI believed that the Kings of Hungary were descended from St Martin, born in Hungary. Their arms of eight bars of red and silver were placed on the saint's shrine in the Cathedral of Tours. Grouville's emblem shows the full eight bars, but St Martin has only seven.



St Clement

St Clement is the Patron Saint of blacksmiths and anchorsmiths. Legend has it that he was martyred by being attached to an anchor and thrown into the Black Sea.



St Lawrence

St Lawrence, Bishop of Rome, was martyred along with six deacons and Pope Sixtus II by being roasted alive on a gridiron. The saint is always depicted by being tied to or holding a gridiron.



St John

The Maltese Cross is the emblem of the Knights of St John at Jerusalem (Knights Hospitallers). The stylised Maltese Cross is set on a green background to recognise the old name for the Parish church, St John of the Oaks, though the church was dedicated to John the Baptist.



St Mary

The lily of the Annunciation of 'Fleur de Lys' has always been regarded as the special flower of the Virgin Mary.



St Martin

St Martin of Tours is the Patron Saint of St Martin and Grouville, which is why their badges are similar. Both badges are based on the arms of the King of Hungary. It has seven bars to distinguish it from St Martin of Grouville.



St Ouen

St Ouen, the Patron Saint of Normandy, founded a religious community on Jersey before the Viking invasions. He is said to have seen a miraculous cross, which told him to travel from Normandy to Jersey.



St Saviour

The Parish church, St Sauveur de L'Épine, was dedicated to Jesus Christ. Hence, the crown and nails of the crucifixion though 'Épine' means thorn and may suggest a relic of the crown of thorns.



Trinity

The most curious of the Parish badges. The triangle obviously represents the Holy Trinity. God (deus) in the centre is (est) father (Parter), Son (Fillius) and Holy Ghost.



St Brelade

St Brelade is in the south west corner of the Island. It is one of the largest and most densely occupied parishes. It is also one of the most varied of the parishes including a port, tourist beaches – St Brelade’s Bay being the Island’s main tourist beach, cliffs, the prominent archaeological site at La Cotte, the famous Corbière lighthouse, commons, part of the sand dunes and large residential areas. St Aubin is built around the port which was the centre of the cod fishing trade which flourished in the 18th and 19th centuries. The parish hall is in St Aubin while the parish church is in St Brelade’s Bay. In the post-War period the area known as Red Houses has become a major residential area with substantial amounts of both private and social housing. The Railway Walk, as its name suggests on land that was previously a railway track, runs from St Aubin to Corbière.

St Peter

St Peter is in the west of the Island. It has only two small coastlines, on both the west and south coasts, and includes part of the sand dunes. It is the home of Jersey Airport which occupies a significant part of the land area of the parish. The Airport dates back to 1937 and has been continually upgraded, the runway now extending to 1,7000 metres. Also in the parish, and next to the Airport, is the ground of Jersey Reds, the Island’s rugby team. St Peter has a distinct centre including parish hall, parish church and shops. Along its eastern boundary runs Jersey’s largest unspoilt inland valley, St Peter’s valley.

St Ouen

St Ouen occupies the north west corner of the Island and includes most of St Ouen’s Bay, the longest bay in the Island, famous for its surf. The long sandy beach also hosted motor racing for many years. Running alongside the bay is a road colloquially known as the “Five Mile Road”, the longest straight road in Jersey and which has also been used for motor racing. St Ouen’s is the home of a number of significant historic buildings including the ruin of Gronez Castle, and St Ouen’s Manor, home for many years of the seigneurs of St Ouen, the de Carteret family. With its windblown vegetation, agricultural buildings and glass houses, St Ouen has a remote and proudly distinctive atmosphere.

St Mary

St Mary, on the north coast, is the second smallest parish in terms of area and by far the smallest in terms of population, the home to just 1.8% of the Jersey population. It shares with St Ouen Greve de Lecq, a small but beautiful beach. A significant geographical feature is Devil’s Hole, a natural crater in a solid cliff measuring about 30 metres across and plunging 60 metres down. It has been caused by the sea gradually eroding the roof of what was once a cave, until it collapsed and formed a crater. The result is a blow hole as the incoming tide pushes air upwards. The parish is the home of La Mare Wine Estate, a 50 vergée working estate well known for its wines and local produce including black butter. St Mary’s village, like the parish itself, is tiny.



St John

St John is a rural parish in the middle of the north of the Island with just two settlements, St John's Village and Sion. Ronez Quarry on the coast has been the source of high-quality granite for many centuries. The cliffs at Frémont Point, Sorel Point and Ronez Point afford some of the best views in the Island. Bonne Nuit is a particularly attractive bay with bay small harbour, which is the finishing point for the annual Sark to Jersey rowing race. Especially prominent is the huge IBC transmitter at Fremont Point.

Trinity

Trinity on the north coast is one of the largest parishes in terms of area but has the second smallest population and the lowest population density, the population being spread throughout the parish. This is in marked contrast to 1788 when its population was second only to that of St Helier; of all the parishes it has changed least in the last few hundred years. The parish has the highest point in the Island, Les Platons, and Bouley Bay, reached by two steep hills which for many years were the venue for a hill climb. Trinity is home to the Jersey Zoo and the world-renown Durrell Conservation Trust and also the Royal Jersey Agricultural and Horticultural Society Showground.

St Martin

St Martin occupies the north east corner of the Island opposite Normandy and for many centuries was in effect the capital of Jersey. In recognition of this, construction of Mont Orgeuil Castle was commenced in the 14th Century. The castle is the most distinctive built structure in Jersey, and is recognised as one of the finest medieval forts in the British Isles. The Castle overlooks Gorey Harbour, once the centre of the oyster fishing industry. North of Mont Orgeuil is St Catherine's breakwater, another impressive structure, but in reality just one leg of a planned harbour that was never completed. Gorey Village has a number of hotels and restaurants; it and Maufant are the main residential areas. The parish hall and parish church are inland and in a rural part of the parish. The parish includes the Écréhous and the Dironelles, a group of islands and rocks, 10 kilometres north east of Jersey to which sovereignty was awarded after a case heard before the International Court of Justice in The Hague in 195-.

Grouville

Grouville occupies the south east corner of the Island and includes the impressive Royal Bay of Grouville, which today is the centre of Jersey's shellfish industry. Gorey Village, which is partly in the parish, runs down to the Bay. Alongside the Bay is the Royal Jersey Golf Club, a traditional links course with Fort Henry as an unusual feature. Inland is one the Jersey's most noted archaeological site at La Hougue Bie. The population of the parish is concentrated in ribbon development along the coast, while the parish church and parish hall are inland. The parish includes the Minquiers, a group of islands and rocks, about 15 kilometres south of Jersey. The largest of these is Maîtresse, which is



about 50 metres by 20 metres and has about ten stone cottages in various states of repair. This is the most southerly outpost of the British Isles.

St Clement

St Clement on the south east coast is the smallest parish in terms of area but one of the most densely occupied. It is very much a coastal parish with the population being concentrated along the path of the former Jersey Eastern Railway on the coast. The parish hall and is at Le Hocq, one of a number of bays in the parish, the others being La Rocque, Green Island and Greve D'Azette. Samares Manor is one of the finest manor houses in the Island, with spectacular grounds and a fine collection of fruit trees.

St Saviour

St Saviour is very much an inland parish. It does have a tiny part of the coast, at the Dicq, once home to Victor Hugo. When the parishes were created many centuries ago the intention seems to have been that every parish would have direct access to the sea, but in the case of strangely shaped St Saviour this is no more than a token. The parish is residential in nature with a high density of occupation. The parish includes most of the Island's secondary schools, Highlands College and Government House, the home of Jersey's Lieutenant Governor.

St Helier

St Helier is the capital of Jersey and by far the commercial and residential centre of the Island. It is home to 34% of the population in just 7% of the land area. The land area has been increased in recent years through a reclamation scheme. The reclaimed land now houses a number of apartment blocks as well as the Jersey International Financial Centre, providing office accommodation. The parish also has two major historic building, Fort Regent, overlooking the town, and Elizabeth Castle, on an islet just off the harbour and named by the island's Governor Sir Walter Raleigh after Queen Elizabeth I.

St Lawrence

St Lawrence is in the centre of the Island, with a relatively small strip of the coast in St Aubin's Bay. Jersey War Tunnels and Hamptonne Country Life are both in the parish. Over 700 years ago the fast-running streams resulting from north/south slope of the Island provided the power for water mills, which were essential to grind the corn. One of these mills, Quetevil, was in a part of St Lawrence, now called Waterworks Valley, as it is the home of the Jersey New Waterworks Company Ltd., which is responsible for water supply in the Island. The valley also includes Millbrook and Dannemarche reservoirs.

Jersey's legal system

Jersey has its own legal system, embracing aspects of Norman law and structures, a fairly standard approach to drafting laws and a court system which has some similarity to that of England but also its own characteristics, in particular a Royal Court and the use of jurats rather than juries.

How laws are made

In respect of new legislation Jersey is little different from most other jurisdictions. The States Assembly, the legislature, has responsibility for enacting legislation. Most legislation is introduced by the Government and prior to the formal legislative process there would typically be a period of analysis and consultation. When this has been concluded a draft law, known as a *Projet de Loi*, is tabled in the States Assembly. However, it is open to any member of the States Assembly to table a *Projet de Loi*.

The process then is similar to that in other legislatures with the legislation being debated at least twice, amendments being proposed, considered and voted on, and ultimately the States Assembly approving what is known in Jersey as a "Law", as opposed to the term "Act" which is used in the UK.

The law is then submitted to the Ministry of Justice in the United Kingdom which has a responsibility to ensure that legislation by the Crown Dependencies does not conflict with any of the UK's treaty and other obligations. In practice, the Law Officers in Jersey ensure that there will not be any such problems. When the Ministry of Justice is content then the law is approved by a committee of the Privy Council and returned to Jersey where it is formally registered by the Royal Court. It is only at this stage that the law comes into effect.

The legal profession

There is a large legal profession in Jersey, most of which helps to service the financial services industry. Most newly qualified lawyers start by studying at an English university, then taking bar or solicitors exams in England and then qualifying to practise Jersey law by passing examinations run by the [Institute of Law Jersey](#). Jersey has solicitors and advocates although only advocates can appear before the Royal Court. In practice, most lawyers in Jersey are advocates. There are also a number of notaries public, their role being similar to that of their opposite numbers in England.

Most of the advocates who work on financial services business are part of one of six law firms which also have operations in other financial centres. They are Mourant, Carey Olsen, Ogier, Bedell Cristin, Collas Crill and Walkers. There are over 40 other legal practices, most of which concentrate on domestic issues such as litigation, conveyancing, matrimonial law, commercial law, trusts, succession and criminal law, although the big firms also offer these services. In total, there are over 50 law firms who operate in Jersey.

The Institute of Law Jersey provides a range of important legal services in the Island. In addition to being the body responsible for examinations, it is also a centre of research on the law of Jersey and Guernsey, and it publishes a regular journal as well as specific studies. Jersey has its own Law



Commission charged with investigating complex areas of Law and suggesting improvements and a Law Society, charged with regulating professional conduct and standards.

The Bailiff and the Law Officers

Jersey has a Bailiff, Deputy Bailiff and two Law Officers, the Attorney General and the Solicitor General.

The head of the legal profession is the Bailiff, who is also the civic head of the Island, the President of the States Assembly, in practice performing the role of speaker, and Deputy Governor in the absence of the Lieutenant Governor. The responsibilities of the Bailiff include -

- Head of the judiciary of Jersey.
- President of the Royal Court.
- President of the Court of Appeal
- Member of the Court of Appeal of Guernsey.
- President of the Assembly of Bailiff, Governor and Jurats, responsible for regulating the sale of alcohol among other duties.
- Making various judiciary-related appointments -
 - Lieutenant bailiffs (usually jurats) and commissioners, any of whom may preside over the Royal Court and exercise other judicial functions of the bailiff as required.
 - the magistrate, assistant magistrate and relief magistrates.
 - approves the appointment by the Attorney General of Crown Advocates
 - the Viscount, the executive officer of the Royal Council

The Deputy Bailiff deputises for the Bailiff as necessary on all matters and has a specific function of being the President of the Board of Examiners for the Jersey law examinations.

The Attorney General and the Solicitor General head the Law Officers' Department which has nine functions –

- Providing legal advice to the Crown, States Members and others. This work includes preparing reports for the Privy Council on new legislation submitted to it by the States Assembly, liaising with the Ministry of Justice on UK legislation which may be extended to the Island, and examining international agreements to determine their relevance to Jersey.
- Providing a public prosecution service for the Island.
- Protecting the interests of the Crown and the Government in civil proceedings.
- Performing the functions and duties of the Attorney General. This work includes –
- Duties which arise as a result of the Attorney General being the Head of the Honorary Police.
- Approving draft and amended constitutions and protecting the interests of charities in the Royal Court.
- Representing the Island in international and inter-insular tribunals, courts and other meetings such as those with the Home Office and Guernsey and the Isle of Man.
- Assisting overseas law enforcement agencies.
- Carrying out conveyancing work for the Crown and Government of Jersey.



The court system

Jersey has a magistrate's court which operates in a similar way to its English counterparts but without Lay Magistrates, dealing with most criminal matters and with limited sentencing powers. It refers cases upwards in appropriate circumstances. Magistrates are legally trained unlike JPs in England.

In addition to the magistrate's court a youth court, which has similar powers to the magistrate's court, deals exclusively with defendants under the age of 18. A petty debts court deals with civil matters below £30,000 as well as landlord and tenant issues.

The principal court in Jersey is the Royal Court, which hears appeals from the lower courts and is a court of first instance for many issues. It can be regarded as equivalent to the English crown courts for criminal matters and the High Court for civil matters. There are four divisions of the court –

- Héritage, which deals with immovable property issues.
- Family, which deals with divorce proceedings and matters relating to children.
- Probate, which handles the administration of estates.
- Samedi, which deals with everything else. Samedi comes from the French word for Saturday, which is when the court used to sit. The name has been retained although the court now sits on Fridays, dealing with public business in the mornings and private business in the afternoons.

The Bailiff often presides over cases in the Royal Court. There is also provision for commissioners to be appointed as judges for a specific period or to deal with a specific case. This is to ensure that there is always adequate capacity in the Royal Court to deal with cases.

A distinguishing feature of the current system in Jersey is the use of jurats rather than juries. The jurats are layman and are selected to hold that position generally because of the record they have in public service. Jurats are elected by an electoral college comprising members of the States Assembly and the legal profession. Candidates must be over 40 and once elected can serve until they are 72. There are at any one time 12 jurats. For most cases the Bailiff or the Deputy Bailiff sits with two jurats, the Bailiff or Deputy Bailiff deciding issues of law and the Jurats deciding issues of fact. This is known as the "inferior number". Where a criminal case carries a sentence for longer than four years then five jurats sit, this being known as the "superior number". For the most serious non-statutory criminal offences (e.g. murder or rape) trial by Jury is available.

A Court of Appeal hears appeals from all Royal Court divisions. It meets six times a year. It comprises the Bailiff, the Deputy Bailiff and a number of senior lawyers from the UK. There is also provision for matters of law to be referred to the Judicial Committee of the Privy Council, although this is unusual.

Parish Hall enquiries

Parish Hall enquiries are a distinguishing feature of the Jersey legal system. They date back over 800 years and reflect the historic importance of parishes and customary law. Basically, a parish hall inquiry is the process of preliminary investigation conducted by a centenier (an honorary police officer) to decide whether to submit the matter to the court system, or whether more informal action is appropriate. Most cases are initiated by the police but others able to refer cases are certain government officials, headteachers and indeed members of the public. The hearings are in private and do not constitute a court of law.



The powers of the centenier are to –

- Give a written caution, advice or even take no action, and there can be an element of restorative justice for example a letter of apology or compensation.
- Defer a decision, generally in conjunction with other conditions such as writing a letter of apology.
- Impose a fine of up to £200 for certain statutory offences.
- Place young offenders under voluntary supervision orders.
- Bring a formal charge for a court appearance before the magistrate.

The Jersey Legal Information Board

The Jersey Information Legal Board is a relatively recent but important component of the legal structure in Jersey. It is chaired by the Bailiff, the other members representing parts of Government and the legal profession. Its strategy is -

- To make the Laws of Jersey and Jersey's legal processes more accessible.
- To promote the better co-ordination of Jersey's justice system.
- To support Jersey's position as a leading business centre.

It provides a comprehensive online library of current legislation (most importantly, unofficial consolidated versions of laws), court judgments and legal books and texts.

Jersey's heritage

Jersey's distinct identity as an island nation in a strategically important location and with a favourable natural environment means that it has a rich heritage. The Island is proud of its heritage and devotes the necessary resources to preserve and enhance it.

Jersey Heritage is the Government-established organisation with responsibility for heritage, running the Island's castles, museums and archives.

The National Trust for Jersey holds ownership of and maintains a number of historic buildings and open spaces.

The Société Jersiaise is a learned society with 14 specialist sections and an extensive list of publications.

Jersey War Tunnels provides an authentic representation of the occupation of Jersey by German forces between 1940 and 1945. Other sites are maintained by the volunteers of the Channel Islands Occupation Society.

Jersey's resolve to maintain its heritage is reflected in its application to be designated as a Global Geopark by the United Nations Educational, Scientific and Cultural Organization (UNESCO). There are currently 144 Geoparks in 44 countries. UNESCO defines geoparks as follows –

UNESCO Global Geoparks are single, unified geographical areas where sites and landscapes of international geological significance are managed with a holistic concept of protection, education and sustainable development.

A UNESCO Global Geopark comprises a number of geological heritage sites of special scientific importance, rarity or beauty. These features are representative of a region's geological history and the events and processes that formed it. It must also include important natural, historic, cultural tangible and intangible heritage sites.

A UNESCO Global Geopark must have geological heritage of international significance which is, during the evaluation process, assessed by geo-scientific experts, from the International Union of Geosciences (IUGS). It is based on the international peer-reviewed, published research conducted on the geological sites within the area. The experts make a globally comparative assessment to determine whether the geological sites constitute international value following a fix set of criteria and questions.

In 2017 the Jersey Government commissioned a [Strategic Review of Culture, Arts and Heritage](#). Jersey Heritage is building on this to produce a new heritage strategy.

Physical heritage

Jersey's [history](#) explains much of its physical heritage. Soil sediments dating back over 240,000 years have been identified at the Cotte de St Brelade site, which also has evidence of occupation by neanderthal man.

Among prominent physical features is Le Pinnacle, a massive granite stack where archaeological remains date back to about 4800BC.

Jersey has no fewer than 11 dolmens and passage graves. The most prominent is [Hougue Bie](#), one of the largest and best-preserved dolmens in Europe. It was in use between 4000 and 3250 BC. A stone vaulted chapel was erected on the summit of the mound in the 12th Century. It was later remodelled in the 16th Century and became a local centre of pilgrimage. In 1792 the chapel was enveloped in a miniature Neo-Gothic 'castle' (since demolished) which became a famous landmark known as the Prince's Tower.

One of the earliest known castles in Jersey was built at Gronez, in the north west of the Island, in the 14th Century. Unlike the subsequent fortifications noted below, all of which has been preserved, it is now a ruin.

The most impressive physical building in Jersey is [Mont Orgeuil Castle](#), also known as Gorey Castle, build on a rocky on the mid-point of the island's east coast. It is recognised as one of the finest medieval forts in the British Isles. Construction began in the 13th Century.

St Aubin's fort was constructed on a small islet in the south west of the Island between 1542 and 1643. It later served to protect the port at St Aubin, which was completed in 1700 and which was the port of departure for Jersey's cod fishing fleet in the 18th and 19th centuries.

As St Helier developed as the political and residential centre of Jersey, there was a need to build a castle to defend the growing capital of the island. In recognition of this [Elizabeth Castle](#) was built on



an islet just off St Helier. Construction started in the 1590s and includes a long breakwater as part of an incomplete nineteenth century harbour expansion plan.

At the end of the 18th Century Jersey faced a renewed military threat from France. General Conway, the Governor of Jersey, ordered the construction of a number of towers, known as Conway Towers, to defend the Island. They include two offshore towers, La Rocco in St Ouen's Bay, and Seymour, three kilometres offshore in St Clement's Bay. With the exception of Seymour Tower they have a distinctive round shape.

Eight Martello towers were built in the 19th Century, again to protect against the threat of French attack. They include two offshore towers, Icho in St Clement's Bay and Portelet in Portelet Bay.

After the Battle of Jersey in 1771, the need to protect the town led to the construction of Fort Regent, on a hill overlooking it. Construction commenced in 1806 but by the time it was completed the threat from France had ended.

Plans were made to build a large naval harbour in St Catherine's Bay in the north east of the Island. Work commenced in 1847 but the project was abandoned after a single breakwater had been built as the harbour created was too shallow and steam technology had made it possible to rush ships to Jersey in times of crisis almost without regard for the weather.

Jersey has a number of prominent lighthouses, the most iconic being that at Corbière in the south west corner of the Island, which was completed in 1873. It can be reached by a causeway at low tide but is surrounded by the sea at high tide, which can often be rough

Granite features significantly in the geology of Jersey, particularly in the cliffs on the coast. Granite has been quarried for many years and features in the military installations and also farms, cottages and walls. Jersey has many prominent houses including manors, particularly at Trinity, St Ouen and Samares, that date back many hundreds of years. The cod fishing industry made many people in Jersey very wealthy and led to the construction of large homes which are today called cod homes, although it is understood that many of these were built by lawyers for the fisherman rather than the fishermen themselves.

The occupation of Jersey by German forces between 1940 and 1945 left its mark on the Island in many ways, including physically. Fearing a British attack, which was never likely to materialise, the Island was heavily fortified, most of those fortifications remaining intact today. Sea walls were built in the south and west coasts of the Island which have proved very effective as sea defences. Bunkers are scattered throughout the Island. Three more extensive, five storey, military towers were built. The most prominent is at Corbière, which is largely above ground. Another at Noirmont is built into the cliff face and surrounded by a number of bunkers. A major fortification is not visible but is also the most significant. In St Lawrence over 5,000 slave labourers built over 1,000 metres of tunnels, 50 metres underground. The tunnels were designed to allow the German occupying infantry to withstand Allied air raids and bombardment in the event of an invasion. In 1943, the tunnels were converted into an emergency hospital. The tunnels have been converted into a comprehensive Occupation Museum. A similar equally large tunnel complex at the head of Grands Vaux is used by the JNWW Co.



Natural environment

For a very small island Jersey has a varied natural environment in which the sea plays an important part. St Ouen's Bay runs along most of the west of the island, St Aubin's Bay features prominently in the centre part of the south of the Island and Grouville Bay comprises much of the east coast. The tidal range is most pronounced in the south east of the Island leading to a spectacular seascape which changes constantly as the tide ebbs and flows twice every day. In addition to the three large bays there are numerous smaller bays, some at the bottom the steep hills and a few accessible only by footpaths. The largest inland feature is the sand dunes in the west of the Island and there are also many other commons and unspoilt headlands in coastal areas. Deep valleys and waterways are a prominent feature of the centre of the Island are important historically as the means of powering water mills dating back to the 14th Century.

Jèrriais -Jersey's own language

Jèrriais is the traditional language of Jersey. It is a romance language of Norman origin and reflects Jersey's history as part of the Duchy of Normandy. It closely resembles the language of William the Conqueror. Until the 19th Century it was the main language and as recently as the 1940s nearly half the population could still communicate in it. According to the 2001 census 3% of the population (nearly 3,000 people) spoke Jèrriais and 15% had some understanding of the language.

The tradition of literature in Jèrriais can be traced back to Wace, a 12th Century Jersey-born poet, although there is little surviving literature in Jèrriais dating to before the introduction of the first printing press in Jersey in the 1780s.

Use of Jèrriais has been declining steadily but in recent years the language has been revived. The Government has a stated policy of increasing the the awareness and visibility of Jèrriais as a language – as an integral part of Jersey's heritage and cultures. The island's French visitors are particularly intrigued by it and at Cambridge undergraduates studying the evolution of French use Zoom to join Jèrriais discussion groups meeting in the island. L'Office du Jèrriais has been established to promote the language and it is now taught at Highland College and in some schools.

Museums, archives and libraries

Jersey's rich heritage is represented and recorded in museums, libraries and archives.

The Jersey Museum and Art Gallery in St Helier is the Island's main museum and offers a regular programme of new exhibitions reflecting aspects of Jersey's history.

The Jersey Maritime Museum is nearby in the port area. In addition to recording Jersey's maritime history, it also includes the Occupation Tapestry woven by Islanders to celebrate the 50th Anniversary of the liberation. The 13 richly colourful panels of the tapestry depict life and hardship under military rule and were created from the memories and stories of Islanders who experienced it first-hand.

Hamptonne Country Life Museum occupies a house and farm in St Lawrence that date back to the 15th Century and represent the rural history of Jersey, particularly the cider industry which was a major industry from the 17th to the 19th centuries.



Jersey War Tunnels in St Lawrence, built during the German Occupation, now house an Occupation Museum.

La Hougue Bie in Grouville, contains historical sites dating from the Neolithic period to the German Occupation of 1940-1945. With a Neolithic passage grave, a German bunker from the Second World War and one of the ten oldest buildings in the world, the site is a focal point of the island's history throughout the millennia.

Jersey Archive is the official repository for the island's documentary heritage and offers islanders access to records on family history, criminal and military records, the German occupation and islanders French ancestry.

Jersey's culture, arts and sport

Culture, arts and sport have played a major part in the life of Jersey throughout history. The fact that Jersey is a small Island has helped ensure its distinctiveness in these areas.

History – art

A number of prominent artists had strong Jersey connections, particularly in the 19th and early 20th centuries. They are documented on the Art page of the Jersey Heritage website, Jerripedia's The Arts page and Wikipedia's List of People from Jersey. They included –

Clément Lemprière (1683-1746), a cartographer who also sketched while travelling

Isaac Gossett (1713-99), who worked mainly with waxed miniatures

Thomas Le Hardy (1771-), a miniaturist

Philip Jean (1775-1802), a miniaturist who painted many members of the Royal Family

John Le Capelain (1812-48), who captured Jersey's romantic landscape

John Oules (1817-85), whose paintings reflect Jersey's maritime history

Charles Poingdestre (1829-1925), most of whose work was done in Rome

Sir John Millais (1829-86), famous for his portrayal of Lily Langtry

Walter Oules (1848-1939), the son of John, a portrait painter

Henry Bosdet (1857 -1934), who specialised in stained glass windows

Frank Le Maistre (1859-1940), an oil painter who painted several Jersey scenes

John Lander (1866-1944), whose portraits included members of the Royal Family

Sir Edward Poynter (1883-1919), who also made his name painting Lily Langtry

Edmund Blampied (1886-1966), who captured the Jersey way of life



Claude Cahun (1894-54), famous for early 20th Century photography

Reginald Whistler (1905-78), a painter, illustrator and muralist.

Jerripedia lists another 35 [Other local and visiting artists of note.](#)

History – literature

Jèrriais was a working language of Jersey until well into the 20th Century. It follows that much of the early literature is in Jèrriais. The literature, and also that from the other Channel Islands, has been translated and published as an anthology *The Toad and the Donkey*, edited by Geraint Jennings and Yan Marquis (Francis Boutle Publishers, 2011).

Jerripedia's page on [The Arts](#) lists 18 writers and journalists with strong Jersey links. Two stand out.

Wace (c. 1115 - c. 1183) was an Anglo-Norman poet and historian, who was born in Jersey and brought up in mainland Normandy. He wrote in a dialect of the Norman language, and his writing is regarded as the precursor of Jèrriais. Wace's most prominent works are the *Roman de Brut*, a verse history of Britain, the *Roman de Rou* and other works in verse, including the *Lives* of Margaret the Virgin and St Nicholas.

Victor Hugo (1802-1855), French poet, playwright and novelist, sometimes identified as the greatest French poet. His best-known works are the novels *Les Misérables* and *Notre-Dame de Paris*, known in English as *The Hunchback of Notre-Dame*. Hugo was forced into exile during the reign of Napoleon III, and after a short period in Brussels, in 1852 he moved to Jersey, where he stayed until 1855. He was expelled after three years, the result of a controversial open letter he addressed to Queen Victoria. He moved to Guernsey, where he lived from 1855 to 1870 and again in 1872-1873. Notwithstanding his short time in the Island, Jersey made a distinct impression on Hugo, documented in Philip Stevens's book *Victor Hugo in Jersey* (Philimore, 1985).

Other significant authors include –

The novelist, Jack Higgins, who has lived in Jersey since the 1970s

Walter Gallichan (1861-1946), whose works covered sex education, travel and angling

Sir William Haley (1901-87), editor of *The Times* and Director-General of the BBC

Gerald Durrell (1925-95), best known as a conservationist, but also a prolific author.

Elinor Glyn (1864-1943), a novelist and scriptwriter who specialised in romantic fiction

Karl Marx, Friedrich Engels and other influential writers such as George Eliot also frequented Jersey throughout their lives.



History – the stage

Jersey, as a small island, has never had the infrastructure to allow actors and actresses to flourish within the Island, but a number of people born in Jersey have had successful careers on the stage in England. The most accomplished is probably Sir Seymour Hicks (1871-1949), an actor, music hall, performer, playwright, actor-manager and producer. However, the best-known is Lily Langtry (1853-1929), an actress, known as “the Jersey Lily”, who was also a socialite who had relationships with several noblemen including the Prince of Wales.

History – sport

Until the post-War period sport in Jersey was largely confined to events within the Island, combined with annual matches against Guernsey.

Until the 1960s the biggest sporting occasion in Jersey was the annual Jersey/Guernsey football match, for the Muratti Vase. This match was preceded by a semi-final in which one of the two islands would emphatically beat a team from Alderney. The competition dates back to 1905 and has been played every year except when interrupted by War and more recently Covid-19. Jersey can claim 55 victories to Guernsey’s 46.

The second long-standing inter-insular competition has been in rugby for the Siam Cup, the second oldest rugby fixture in the world. Jersey can claim 61 victories to Guernsey’s 16.

One sport where Jersey people had an early impact on the world stage is golf, through Harry Vardon and Ted Ray. Harry Vardon (1870-1937) was born in Grouville and although there is a statue of him at the entrance to the Royal Jersey Golf Club in the parish, he learned his golf in England. He won six Open Championships and one American Open between 1896 and 1914, and was regarded as one of the three greatest golfers in the world. Vardon developed the overlapping grip, which bears his name, and is the most common grip in use today. Vardon was ranked as the 13th best golfer of all time by *Golf Digest* magazine

Ted Ray (1877-1943), like Vardon, was born in Grouville, but unlike Vardon, learned his golf on the Royal Jersey links course. Ray won the Open Championship in 1912 and was runner-up twice. Ray is best known for being in a playoff for the U.S. Open in 1913 with fellow-Jerseyman Harry Vardon and the eventual winner, American Francis Ouimet. The Open was the culmination of a two-month tour of North America by Vardon and Ray, in which they partnered each other in exhibition matches against the top players in each area they visited.

Two other golfers born in Grouville in the 1870s, Thomas Renouf and Phil Gaudin, also each had three top ten finishes in the Open Championship.

The arts in Jersey today

The wide range of activities today was described in a report by the consultants BOP in a 2018 report *Jersey Culture, Arts and Heritage Strategic Review and Recommendations*. Following is a summary.

The Jersey Arts Centre is Jersey’s largest multi-arts venue, offering both original content and productions and visiting special events and performances. It also runs a number of community arts initiatives including



The Jersey Arts Trust ([ArtHouse Jersey](#)) promotes artists and artist development, helps to incubate artistic projects in the island, giving Jersey artists opportunities and exposure outside the island, and brings in visiting international artists.

The Jersey Opera House, which originally opened in 1900, is a 625-seat theatre that hosts hundreds of performances each year, ranging across music, comedy, dance, drama, children's shows and musicals. The Opera House also is an official National Theatre Live venue. It has a studio space which is used for courses and classes in addition to smaller-scale performances.

There is also a number of community-based groups including -

- Alliance Française, which is dedicated to the promotion of French language and culture in the Island.
- Big Gig in the Park is a series of charitable music concerts taking place during the summer in Howard Davis Park.
- Domaine des Vaux Opera Festival has been running for 30 years and brings high quality productions to Jersey.
- The Jersey Amateur Dramatic Club and the Green Room club puts on dramatic presentations—musicals, plays, and pantomime—and provides material support for schools and other local productions.
- The Jersey Eisteddfod was founded in 1908, and encompasses disciplines spanning music, arts and crafts, dance and photography. The Eisteddfod hosts two annual festivals: the Spring Festival of Creative Arts and an Autumn Festival of Performing Arts.
- The Jersey Festival Choir is a non-auditioned, all-age, mixed-voice community choir of around 80 members in Jersey.
- Jersey Music Service provides music tuition in schools across Jersey and operates music centres that involve activities and ensembles in a large range of genres for children of all ages.
- Music in Action aims to educate, inspire and create through music across the island through hosting music workshops at schools, therapeutic musical performances in hospitals, hospice and care homes; and through events including at the Liberation Festival, Jersey Sings and the Jersey Chamber Orchestra concerts.
- Rocksteady organises year-round music events in Jersey from music festivals to DJ and club nights at venues across the Island.
- TimpanAli develops musical theatre productions, most recently Joseph and the Amazing Technicolor Dreamcoat.

[Wikipedia](#) lists a number of people with Jersey connections currently prominent in the arts —

- Actors and actresses: Henry Cavill, Tonicha Jeronimo, Jonny Labey, Sylvestra Le Touzel and Wilf Smith.
- Musicians: Andy Chatterley, John Wort Hannam, Gerard Le Feuvre, Steve Lodder, Gilbert O'Sullivan, Nerina Pallot and Kevin Porée.
- Writers: Rosie Boycott, Roger Drew, Harry Patterson and Jeremy Reed.



Sport in Jersey today

Jersey competes as a nation in international men's **cricket**, its team winning the international division 5 championship in 2019. Six club sides compete in a weekend league and four in an evening league. Jersey Cricket is responsible for administering and developing the game in the Island and has a high priority to develop women's cricket from grass roots level to a national side.

Jersey has a prominent **rugby** team, Jersey Reds, which competes in the English championship, the second tier of English rugby, as well as the annual match against Guernsey for the Siam Cup. A number of former Jersey players have gone on to play international rugby for Scotland and Wales, and a Jerseyman, Matt Banahan, has represented England. In 2021 the British and Irish Lions used Jersey as a training base prior to their tour of South Africa. The club is a community club with mini, junior and women's rugby.

Jersey has 23 **football** clubs. One Club, Jersey Bulls, competes in the English league system and the FA Cup. The Jersey national team also competes in the English leagues as well as the long-standing annual match against Guernsey for the Muratti Vase. The Jersey Football Association is the governing body for football in Jersey. It aims to grow participation levels, encourage diversity and promote best practice and a safe learning environment. Over 2,000 players of all ages are actively involved in football in Jersey.

Jersey has three 18-hole **golf** courses. La Moye in St Brelade has hosted European tour events. The Royal Jersey in Grouville has several distinguished former members, particularly Harry Vardon and Ted Ray, mentioned earlier as among the world's leading golfers at the beginning of the 20th Century.

The sea provides offers not only recreational swimming but also at St Ouen's one of the best surfing beaches in the British Isles. A number of Jersey men and women have been prominent in long-distance swimming, notably Sally Minty-Gravett who was swum the English Channel seven times.

Other sports in the Island include athletics, cycling, tennis, coastal rowing, shooting, basketball, netball, bowls and petanque, a variation of bowls that is normally played on hard dirt or gravel.

Since 1958, Jersey has competed as a team in the Commonwealth Games, responsibility for which rests with the Commonwealth Games Association Jersey. It has won six medals, the last, its only gold in 1990, when Colin Mallett won the Open Full Bore Rifle competition.

Jersey was a founder member in 1997 and has since been an active participant in the International Island Games, held every two years for islands throughout the world. Jersey hosted the games in 2015 and in 2023 the team will have only a short distance to travel as the venue will be Guernsey. At the most recent games, held in Gibraltar in 2019, Jersey topped the league table with 33 gold medals, 31 silver and 29 bronze.

Jersey Sport, established in 2016, is an independent body tasked with championing sport and active living in the Island. One of its important roles is to administer travel grants, funded by the Government, which enable sports teams to travel to England and further afield. Its website includes a directory of sports events and organisations. It has also instituted a Hall of Fame to recognise the achievements of Jersey's sports stars. Nine people have so far been inducted into the Hall of Fame –

Colin Campbell, a double Olympian in athletics and bobsleigh



Elizabeth Cann, badminton

Graham Le Saux football

Tommy Horton, golf

Dot McCready, diving

Simon Militis, swimming

Harry Vardon, golf

Ted Ray, golf

Cliff Mallett, shooting

Jersey's history

Earliest times

The earliest evidence of human activity in Jersey comes from about a quarter of a million years ago, when bands of Palaeolithic (old Stone Age) hunters moved through the area, following herds of mammoth and other mega fauna. There are two cave sites, at La Cotte de St Brelade and La Cotte à la Chèvre, which tell the story of these early days.

However, people really settled only at about the time Jersey became an island – about 7,000 years ago, when the water from the melting Arctic ice caps eventually flooded over the low-lying plains between what is now Jersey and France. This was the beginning of the Neolithic (or new Stone Age) period and it was then that the first farmers began to settle. The most obvious evidence from this time is their religious sites – known as dolmens – that can be seen around the Island, the biggest and most spectacular being at La Hougue Bie.

It is estimated that between 4,000 and 3,000 BC the population of Jersey was between 2,000 and 4,000, comprising between 10 and 20 separate communities each with a population of between 200 and 250. There was then a significant decline in the population largely because of the loss of land to a rising sea level. The population may have fallen to about 500 in the middle Bronze Age (2,000-1,500 BC).

England became part of the Roman Empire from 43AD to 410AD. There is currently little archaeological evidence of Romans in Jersey, although there have been significant findings found in both Guernsey and Alderney. Despite this, the recent finding of a significant coin hoard perhaps indicates the first large-scale use of Jersey as a place for storing money. The Island was known as Andium at that time. Although the Channel Islands were part of the Roman trading system, Guernsey was of more significance than Jersey, its northerly location put it more directly on the sea route from southern Europe to England and St Peter Port became a significant Roman port of call.

The links with Normandy

After two or three centuries of chaos, new states began to emerge from the tribal society of Europe. By the middle of the 9th Century, the dukes of Brittany gained control of the Cotentin peninsula in Normandy and the Channel Islands. At the same time, Vikings, in particular one named Rollo, believed to have come from the area of Alesund on the west coast of Norway, were subjecting northern Europe, including the Channel Islands, to raids from Norway and Denmark.

The picture of the past becomes clearer after AD933 when Rollo's son, William Longsword, the second Duke of Normandy, annexed the Channel Islands. Jersey was firmly in the Norman world. The local language, *Jèrriais*, is one of the dialects of western Normandy that shares the same roots as the Norman-French spoken by William the Conqueror, and it was the everyday language of the Island until the 20th Century.

The Duke divided the Island up into land holdings called fiefs and gave them to his followers in return for certain services. These tenants of the Duke were called seigneurs, who in turn granted land to their followers, again in return for services.

In 1066 the seventh Duke of Normandy (William II of Normandy) defeated King Harold of England in the Battle at Hastings and became King William I of England. The Channel Islands therefore became part of the united England and Normandy.

Under Norman rule, in 1155, an abbey was established on the islet where Elizabeth Castle now stands; it is believed to have replaced an earlier monastery dedicated to St Helier. The abbey must have been the grandest building in Jersey and remained the Island's most important religious site until the Reformation and the suppression of the monasteries in 1540 by King Henry VIII.

The Islands seems to have been reasonably prosperous at this time. Jersey was already densely populated with about 6,000 people. Jersey had emerged as a shipping centre in the late 12th Century as landfall for ships between France and the British Isles. Fishing was a major industry, mainly mackerel and conger eels, with significant exports to France.

1204 -1341

The year 1204 is seen to be the defining year in Jersey's history, when the feudal authorities to which it was subject lost their Norman possessions, shifting Jersey's centre of gravity from the continent to England. However, the change in affiliation was a rather long process and not a single event at one time, and particularly so in respect of the economy of the Island.

In 1204 Normandy and England separated but with Gascony and the Channel Islands being retained by the English Crown. Successive English kings wished to keep the Channel Islands, but their proximity to France meant that they needed to be defended. Mont Orgeuil Castle at Gorey was built in the first half of the 13th Century.

The split from Normandy did lead to a change in the structure of land ownership. Ownership of land in both Normandy and Jersey became impractical. The large landowners split their estates with the smaller parts, that is the land in Jersey, being allocated to younger sons and daughters. The abbeys and priories of Normandy also continued to own land in Jersey and benefitted from rent and other payments. It was not until 1568 that Jersey's religious links moved from Normandy to England.



The move of Jersey's allegiance from the Dukes of Normandy to the Kings of England became formalised with the Treaty of Paris in 1259, under which the English Crown gave up its claim to France, other than Gascony. In 1294 England lost Gascony to France leaving the Channel Islands and Calais as the only remaining "French" possession of the English Crown.

The first "snapshot" of Jersey is a 1331 document popularly called the Jersey Domesday Book, but more accurately the Extente. At that time the land in Jersey could be subdivided into three categories-

- Land owned by the King - about 20% of the total.
- Land previously owned by the King that had been gifted to his followers in exchange for certain services – around half the land.
- Land that continued to be in the hands of Abbots and Bishops of Norman monasteries and churches, notwithstanding the break with France in 1204 – under 20 % of the land.

The land held by the King, the seigneurs and the abbots and bishops were occupied by tenants who paid a rent either in cash or kind – generally wheat, but also barley, hens, capons, eggs and loaves. A tax was levied on all households. About two thousand households were liable to the tax, which suggests a population of 10-12,000.

In 1341, following a French raid in 1338, King Edward III granted a charter to Jersey which confirmed "all privileges, liberties, immunities, exemptions and customs in persons goods moneys and other things...without hindrance or molestation". This charter, the terms of which were expanded in a number of later charters, confirmed Jersey's special status in relation to England.

The black death 1347-51

The first half of the 14th Century was eventful for Jersey. It followed a period of strong economic growth. However, between 1315 and 1319 there was a great famine, which led to many deaths. The raid from France in 1338 was another significant setback and reportedly devastated Jersey. But Jersey rebounded until the plague, known as the black death, swept Europe between 1347 and 1351. It was particularly severe in coastal areas, with Normandy suffering particularly badly. There is no reliable, specific evidence of the effect of the black death on Jersey, other than that eight out of ten rectors in the Island were victims. However, given what happened in Normandy it is reasonable to assume that the effect was substantial, particularly on the fishing industry.

There were further outbreaks of the plague throughout the second part of the 14th Century, and around this time the Island was also adversely affected by climate changes known as "the little ice age" that reduced crop yields. The population of Jersey fell by 30-40% and in the early 15th Century was probably 4,000-5,000.

The Tudor period 1405-1603

The Tudor Period in England ran from 1485 to 1603 and including the reign of Elizabeth I from 1558 and 1603. This period is widely regarded as a golden era in English history. Jersey was adversely affected by the war of the Roses (1455-85) to such an extent that French troops entered the Island unopposed in 1461 and occupied it for seven years. In 1468 the French and English Kings reached an agreement, endorsed by the Pope, that the Channel Islands would enjoy commercial neutrality in

future wars, a status that lasted for nearly 300 years and which was of great benefit to Jersey economically.

The Reformation did adversely affect Jersey, the churches losing many of their valuable assets. In 1569 the churches in Jersey finally formally moved from being responsible to the Catholic bishops in Coutances to the diocese of Winchester. The French had their own wars of religion between 1629 and 1662, which benefitted Jersey both through an influx of protestant refugees who brought wealth and skills, and through the reduced risk of French military action.

The turn of the century saw a significant development in the fortification of the island with the realization that Mont Orgeuil Castle was in the wrong place to defend the Island and work commenced on building the more strategically placed Elizabeth Castle. Between 1600 and 1603 Jersey had perhaps its most famous Governor, Sir Walter Raleigh.

The English Civil War 1642-1660

Jersey became embroiled in the 17th-century English Civil War, which for two decades dominated politics in the Island and intruded into everyday life. After the outbreak of war in 1642, most Islanders were sympathetic to the parliamentary cause. This may have been through conviction or widespread resentment of the Carteret family, who controlled the Island on behalf of the English king.

Sir George Carteret, who was Lieutenant Governor and Bailiff, ran a privateering fleet out of St Aubin, which raised a fortune for the Royalists. For a few months in 1646 the Prince of Wales, the future Charles II, sought refuge in the Island and was lodged in the Governor's House at Elizabeth Castle. In response to Carteret's activities, the Parliamentarians despatched an invasion force to the Island in 1651. Carteret and his men retreated to Elizabeth Castle, where they were finally forced to surrender after being bombarded from the town. A harshly puritanical regime then governed the Island until the restoration of the monarchy in 1660.

After the execution of Charles 1 in 1649, Jersey was one of the first places to proclaim his son King. A few months later Charles returned with his brother, the Duke of York (the future King James II). Although he was now a king in exile, Charles was very short of money and his stay was a financial burden on the Island. In recognition for his loyalty during the Civil War, Charles II gave George Carteret a tract of land in North America, which became known as New Jersey.

Economic developments, 16th – 18th centuries

Until the early 1500s the Jersey economy primarily consisted of agriculture and fishing. While agricultural products were largely for domestic consumption, a significant proportion of the fish, largely conger and mackerels, was exported to France. From the 1500s two industries developed – knitting of woollen stockings and cider production. The knitting industry relied on wool imported from England, and much of its exports went to France, a good proportion illegally. By contrast cider production relied on home grown apples, but with much of the product being exported to England. Both industries depended on the sea being a highway rather than a barrier and favourable tax treatment from England.

However, it was cod fishing in Canadian waters that became the dominant industry in Jersey. As this activity began to become viable so this attracted interest from Jersey. It is possible that initially the interest was from people from Jersey crewing French boats operating from St Malo, but it was not long before some of the more entrepreneurial Jersey merchants began fishing in Canadian waters in



their own right. There is clear evidence of Jersey merchants operating in the Newfoundland area in the late 16th Century. By the second half of the 17th Century as many as 20 Jersey vessels were operating around Newfoundland. For a variety of reasons, the industry then declined but resumed growth in the first part of the 18th Century. In 1731 it is estimated that 17 Jersey vessels sailed to Newfoundland with 1,500 seamen and by then permanent bases had been established in Conception Bay in Newfoundland.

The second half of the 18th Century saw the focus of the industry move from Newfoundland to what is now mainland Canada. A landmark event was the establishment by a leading Jersey merchant, Charles Robin, of a factory in Pespébiac in the Gaspé peninsular, marking a significant move to land-based operations. By the 1770s there may have been up to 70 Jersey ships and 2,000 Jerseymen engaged in the cod trade. By the 1840s it is estimated that the industry employed directly 4,000 people. Also, many others were engaged in manufacturing goods to be exported to the Canadian settlements.

French and English conflict

England and France were in a state of war or tension for much of the second millennium. England regarded Jersey as a “fortress town” and continued to support it by military expenditure and preferential treatment for Jersey people and goods in England. There was a period of comparative calm in the late 16th and 17th Centuries, when the French had other territorial concerns. During the 18th Century, France and England were almost constantly at war as the European nation states struggled to achieve a balance of power.

The famous Battle of Jersey occurred in 1781 when a French force under Baron de Rullecourt came close to capturing the Island. The Lieutenant Governor, Moyse Corbet, was captured and submitted. An English army officer, Major Peirson, disobeyed orders, refused to surrender, and led a successful attack on the French soldiers in the Market Square (now called Royal Square). The Battle of Jersey has been a continuing inspiration for commemorative souvenirs and is the subject of a famous painting by American artist John Singleton Copley, a copy of which hangs in Jersey’s Royal Court.

A new form of economic warfare was developed - privateering. This was intended to disrupt enemy shipping and trade all over the world. A ship owner was licensed by the Crown to attack enemy shipping by a 'Letter of Marque', which entitled him to keep the profits from any prize he captured. Many merchantmen carried on with their normal trade but took any opportunities that arose to attack enemy ships. The profits from the sale of any ship or goods captured were shared between the Crown, the owner and the crew.

Privateering could be a very lucrative business and many Jersey fortunes were made this way. On the other hand, there were risks, as corsairs operating out of St Malo were very active. In 1793-5, 42 Jersey boats (70% of the Island's shipping) and 900 men (4% of the entire population) were captured by the French. Privateering finished with the end of the Napoleonic Wars in 1815.

The conflict with France led to the fortification of the Island, evidence of which remains to this day. Mont Orgueil castle was the main medieval castle. Construction began after the English King lost mainland Normandy in 1204. The castle was strengthened over time but attempts to adapt it to withstand cannon fire were unsuccessful. New fortifications were built on the islet at St Aubin and then on St Helier's islet, starting in the mid-16th Century. This developed into Elizabeth Castle, the main defence of the Island throughout the 17th and 18th centuries. During the Napoleonic Wars Fort Regent



was built on the Town Hill. It superseded Elizabeth Castle, but was only completed in 1814, just in time for a long period of peace.

After the French invasion attempt of 1779, 23 coastal towers, known as Conway Towers after the Governor of Jersey at the time, were constructed around the coast in a style that is unique to the Island. Eight squat Martello towers were built after the turn of the century and are similar to towers around the British Isles. Other batteries, guardhouses and magazines, built in the 18th Century, have survived in varying states of ruin.

In 1843 twelve Parish Arsenals were built and in 1847 the British government, suspicious of French naval intentions, ordered the construction of a deep-water harbour at St Catherine's. The project was at best over-ambitious and only one part of it was built – St Catherine's Breakwater, which remains an impressive structure albeit with no purpose. The French threat effectively ended with the accession of Napoleon III in 1852 and Jersey ceased to benefit from military expenditure.

More general political uncertainty in the middle of the 19th Century led to a number of political refugees seeking shelter in Jersey. The most famous was the great French writer, Victor Hugo, who arrived in Jersey in 1852 and stayed for three years, holding court with other freedom-loving political radicalism before moving to Guernsey. By then France had opened a consular office in Jersey, one of the Consul's duties being to spy on the activities of the radicals exiled from Paris. Although he was in Jersey for only three years, he developed a love for the Island, reflected in some of his writing.

Economic growth in the 19th Century

Jersey enjoyed an unprecedented economic boom in the first half of the 19th Century. The cod fishing industry was at its peak. This stimulated a separate shipping industry. The fish caught in North American waters was typically sold not in England but rather in Central and South America and southern Europe. The fishing vessels did not sail back to Jersey empty but rather the proceeds of the fish sales were used to buy commodities such as coffee, sugar, mahogany, wines and spirits and fruit. These were re-exported to England or to the colonies. Products made in Jersey could be exported to the colonies free of tax and this led to manufacturing of some items, particularly shoes, which were then exported to Canada.

The shipping industry spawned a shipbuilding industry with a significant number of shipyards on the south and east coasts of Jersey. Initially, fishing vessels for the Jersey fleet had been built in the outposts in Canada. The activity shifted to Jersey; the first large scale commercial shipyard being built in 1815. In that year 69 vessels with the total tonnage of 7,519 were registered in Jersey. By 1865 these figures had increased to 422 and 48,629, about 80% of the tonnage having been built locally. It is estimated that in the 1860s about 6% of the total tonnage of wooden fishing fleets built in the British Isles had been built in the Channel Islands, mainly Jersey.

The best indication of the growth of the economy in the first half of the 19th Century was a doubling of the size of the population from 28,600 in 1821 to 57,020 in 1851.

The rapid immigration led to significant changes in the composition of the Jersey population. After the Napoleonic Wars there was an influx of British Army officers retired on half-pay who found life in Jersey congenial and cheap. These waves of settlers created a demand for housing that was met largely by the expansion of St Helier.



Additional English-speaking immigrant labourers - many of them Irish - came to work on the major building schemes such as the Esplanade, the harbour development, Fort Regent and the St Catherine's Harbour project. The unskilled workers were underpaid and exploited. They lived in the poorest parts of the town, where they were particularly susceptible to the cholera epidemics of 1832 and 1849. Other nationalities began to make their mark in Jersey, attracted by work opportunities.

Politics and social unrest

Economic growth brings with it tensions and Jersey was not immune from these. There was tension between islanders and new arrivals, many of whom had little wish to integrate. The character of the Island changed with English language, time, currency and measurements being more commonly used. There were also political tensions within Jersey, with two factions, the Laurels and the Roses hating each other. The exclusion of immigrants from government and concern about judicial processes led to pressure for reform. This led to a Royal Commission of Enquiry into the Jersey legal system in 1845. This had little effect. In 1859 a more wide-ranging commission was established. Its main recommendation was a separation of the judiciary from the legislature and the establishment of an island-wide police force to replace the honorary police system run by the parishes. However, its proposals were largely rejected. Instead, these were a time of nineteenth century constitutional court cases in which Jersey fought for and secured confirmation of its privilege and autonomy.

Economic decline 1851 - 1921

The economic boom, which had stimulated the rapid increase in population in the first half of the 19th Century, ended abruptly in the 1850s. The primary reason was the collapse of world trade and the cod fishing industry, which in turn led to a banking collapse in the 1870s. Other factors played a part

- A thriving oyster industry peaked in 1852-53 and within 10 years output fell by 95% as a result of over-fishing and health scares.
- The shipbuilding industry could not make the change from sails and wooden hulls to steam and iron.
- The cider industry declined by 90% in the ten years after 1865, partly because of competition from English suppliers, and partly because the potato industry offered higher returns.
- Jersey had ceased to be of significant strategic importance to the UK after 1815 – although with a temporary blip in the 1840s. After the Franco-Prussian War of 1871 Jersey ceased to have any strategic value to the UK and therefore no longer benefited from defence expenditure.
- The major construction project of the harbour at St Catherine's and other projects were abandoned.
- Jersey's uniquely favourable tax position was eroded in the 1850s and 1860s by a series of measures, in particular the Customs Amendment Act 1860, which imposed a duty on all goods entering the UK.

The population fell in response to the decline in economic activity. By 1901 it had fallen from its 1851 peak of 57,020 by 7.8% to 52,576; it fell further to reach a low point of 49,701 in 1921, 12.8% below the 1851 peak. Although the overall population numbers declined a significant development was a steady flow of migrant workers from Brittany and Normandy to Jersey, largely to work in the agricultural industry. By 1901 it is estimated that the number of French-born people in Jersey was



6,000, about of 10% of the total population. The increasing size of the French-born population raised political concerns about the influence they were having on social structures in the Island.

Although there was a downturn in the economy generally in the second half of the 19th Century two sectors increased significantly in size and became the mainstay of Jersey's economy for the first part of the 20th Century.

Tourism developed as Jersey's natural attractions became open to visitors from England given the development of regular steamship services. The services were part of the railway network and employees of the railway were able to secure very attractive fares. This group comprised a significant proportion of total tourism activity.

Within the agricultural sector the significant trend was the development of the Jersey new potato industry. This resulted from a combination of research, Jersey's natural advantages in particular its favourable climate, and marketing. The relatively short new potato season was possible only through use of seasonal immigrant Labour from Brittany and Normandy.

World War 1 and the inter-war period

After the outbreak of War in 1914 the British garrison in Jersey was withdrawn and many of its French residents departed abruptly. The Island was not directly affected by the war but many Jerseymen served overseas. In 1916 conscription was introduced. Over 6,000 men served in the forces. Men unfit for active service, or in occupations such as agriculture, were formed into the Royal Jersey Garrison Battalion.

The war had a lasting legacy on Jersey as it did on the UK. Of the 6,000 Jerseymen who served during the war 862 were killed, many of whom would have been expected to play significant roles in the economic and political life of the island. Economic recovery was painfully slow, and Jersey was not immune from the factors that led to the worldwide depression at the end of the 1920s and in the early 1930s.

In the early 1920s the Imperial Contribution Crisis arose when Jersey refused to agree an annual payment towards the defence costs of the British Empire. Instead, a one-off payment was reluctantly accepted, and Jersey maintained its right to stand aside from the fiscal and other affairs of the UK.

By this time Jersey's maritime industry had virtually ceased to exist. Agriculture was the principal industry accounting for well over a quarter of total occupation in 1921. The tourism industry also developed in importance in this period.

A significant social trend, replicating what was happening in England albeit somewhat later, was the removal of discrimination against women. Women were given the right to vote in 1919 and this was followed by liberalisation of rights in respect of land ownership and standing for election.

World War 2 – the Occupation

War between Britain and Germany broke out in 1939. By 1940 German forces had overrun most of northern Europe and it was impractical for the British to defend the Channel Islands. To save unnecessary loss of life, the Islands were demilitarized. The British Army moved out and after a brief bombardment the German Army moved in. The Occupation began on 1st July 1940. During the next five years a strict curfew was enforced, censorship was imposed, the possession of radios and cameras was forbidden, and stringent rationing was introduced. The learning of German was compulsory in

schools. More than 300 Islanders were sent to prison or concentration camps for “political crimes”, which included helping Russian prisoners and listening to the BBC. Twenty-two of them died in captivity. A further 1,300 British-born men and women and their families were deported to internment camps in Germany. Food, clothing and fuel were scarce throughout the Occupation. After the Allied landings in Normandy on June 1944 the situation worsened as the Channel Islands were cut off from German supply lines. Everyone was near to starvation by the time the International Red Cross ship *Vega* arrived on 30 December 1944 with food parcels for the Islanders.

Slave labour was imported by the Organisation Todt to help in the construction of massive fortifications. Not only did the artillery batteries on the Channel Islands protect the whole Bay of St Malo, but the Islands themselves were made impregnable. Hitler was determined to defend the only British soil his forces ever occupied. But the defences were never put to the test. The Allies avoided the Islands, and Jersey was not liberated until May 9th 1945, the day after VE Day.

Between the outbreak of War and the beginning of the German Occupation 2,000 Jersey people, mainly men, left the Island, many of the men enlisting with British forces. Immediately prior to the occupation evacuation schemes were organised for those who wished to leave the Island. Eventually some 6,600 people out of a total population of 50,000 left the Island. By contrast, out of the much smaller Guernsey population of 42,000 as many as 17,000 left. Most of those who left returned to the Island after the War, but many did not.

The Occupation had a huge impact for many years after 1945. The term “the Occupation” has been one of the most commonly used expressions in Jersey. Physical manifestations of the Occupation are still apparent nearly 70 years later through extensive fortifications built by the Germans. There have been numerous publications dealing with particular aspects of the occupation and also many personal narratives. Liberation Day remains the single most important day in the Island’s calendar.

Post-War Jersey

While there was immediate relief following the liberation of Jersey there were inevitably tensions arising from the period of occupation, with differing views on the relationship between the Island authorities and the German occupying forces and resentment against those who had benefitted financially from the occupation through collaboration. There was a clear desire for change, particularly political reform, and this duly occurred in the years after the War. The first significant move was the removal from the States Assembly of the Church of England rectors and the jurats, who had been in the anomalous position of being members of the legislature and of the Royal Court. In place of 12 jurats provision was made for 12 senators, elected on an Island-wide basis, and the number of deputies was expanded to give greater representation to St Helier which previously had been unrepresented. Other significant legislation including the enactment of Jersey's first divorce law in 1949 and the introduction of enhanced welfare provisions, which at the time was fiercely controversial.

The post-War period quickly proved to be one of economic boom. Agriculture quickly recovered, tourism expanded significantly, and Jersey began to attract wealthy expatriates who contributed significantly to the Island’s tax revenue. A particularly significant development was in 1962 when a

ceiling on interest rates in Jersey, which dated back to 1771, was removed. This laid the foundation for the establishment of the international finance industry, which subsequently has grown to be Jersey's major industry.

The most significant political development for Jersey in the post-War period was Britain's accession to the European Economic Community in 1972. Jersey had grown prosperous through its strong connections to the United Kingdom while being able to be sufficiently different through using its tax system to attract people and business to the Island. Britain's entry into the European Economic Community threatened this position. If Jersey was inside the European Economic Community, then much of its autonomy would be lost but if it was outside the Community then the close economic links with Britain on which it depended would be severely damaged. In the event, a special arrangement was negotiated which gave Jersey and the other British Crown dependencies the best of both worlds, that is being within the common external tariff of the European Community but otherwise outside of the single market provisions.

With this issue settled after 1970 Jersey's prosperity has continued almost unabated. This is reflected in population growth. The Island had recovered quickly after the war the population increasing from 51,000 in 1939 to 57,000 in 1951. Since then, the population growth has been more rapid reaching an estimated 108,000 in 2020.

Jersey's natural environment

Physical location and size

Jersey is the largest of the Channel Islands which, as the name suggests, are in the English Channel, but much nearer to the French side of the Channel than the English side. Jersey is just 22 kilometres from the Normandy coast, 56 kilometres from Saint Malo and 160 kilometres from the South Coast of England.





Jersey is very roughly rectangular in shape with a land area of 120 square kilometres. Jersey's location means that it is subject to a substantial tidal variation with the high tide being as much as 12 metres higher than the low tide. The nature of the foreshore is such that the tide in parts of the south of the Island goes out several kilometres such that at extreme low tides the size of the Island is increased by around 25%.

Jersey has long stretches of sand on the west coast (St Ouen's Bay), the south coast (St Aubin's bay) and the east coast (Grouville Bay) while the north coast is more characterised by cliffs and smaller bays, some of which offer small natural harbours. On the west coast sand dunes stretch some way inland.

Distinctive features

In 2020 the Government of Jersey commissioned a study, Jersey integrated landscape and seascape character assessment, as part of the preparation of a new Island Plan. The assessment, which is the source for most of this paper, listed ten special qualities of Jersey's landscape and seascape.

Variety, uniqueness, and drama

Within Jersey's 45 square miles, there is an extraordinary diversity of landscapes, from patchwork fields to deep wooded valleys, from rugged coastal cliffs to sweeping flat sandy bays, and from uninhabitable reefs to tranquil villages. Its unique position in the English Channel, close to the French coast, means that it is influenced by both marine and continental weather and water systems, and by a fusion of English and French culture.

Diverse and unusual geology

Jersey's skeleton is formed of many different types and ages of igneous and sedimentary rocks, reflecting its tumultuous formation over millions of years. This combination of rocks (on land, in the intertidal zone and under the sea) leads to great diversity of landform, as well as marine features and habitats. The coasts offer opportunities to see very rare rock formations, whilst the largely inaccessible offshore reefs are unique in Europe.

Abundance of habitats

Jersey's waters are teeming with life, supported by an array of underwater and intertidal habitats including seagrass beds, kelp forests, maerl beds, underwater rock and reefs. Onshore, extensive dune systems provide habitats for species unique to Jersey, and wildlife thrives in the coastal heaths, woodlands, meadows and marshes. A network of hedgerows and banks provides opportunities for wildlife corridors across the island.

Spectacular coastline

Much of Jersey's dramatic and distinctive coastline is entirely natural, from the high, rugged, granite cliffs and headlands of the north coast, to the vast sandy sweep of St Aubin's Bay in the south. Low tide reveals a dramatic and vast world of reefs around the coast, and out to sea. The coastline also has a human legacy of fishing, vraicing (collecting seaweed to use as

fertilizer), tourism and defence. Lighthouses, beacons and defensive towers form landmarks and seamarks, and add to the sense of place.

Hidden rural interior

Away from the coast, Jersey feels strongly rural, with a secretive, intimate character. Deep, dark wooded valleys cut through a plateau of patchwork fields. The rural landscape reflects generations of farming practices - from sheep, to apples, to potatoes and cattle – practices which have evolved to take advantage of Jersey's weather, climate and soils. An intricate web of lanes, often tunnel-like between banks and trees, cover the island, linking the scattered farms and villages.

Unique prehistoric archaeology

Caves in the cliffs contain archaeological remains from the Palaeolithic period onwards, including evidence for early human life. Back then, the caves would not have been looking out over the sea, but instead over a vast plain, crossed by river channels, and it would have been possible to walk to what is now France. Later prehistoric archaeology includes La Hougue Bie, one of the most complete Neolithic burial chambers in Europe, and around the coast are visible monuments (dolmens and standing stones) and archaeological landscapes buried under sand deposits.

A rich built heritage

Traditional buildings of local warm-coloured granite occur throughout Jersey, with a distinct local vernacular style influenced by both English and French cultures. Villages vary in form, with some nestled at the foot of the coastal escarpment, and others in sheltered valley-head locations. Most villages are centred around a medieval parish church with a stone spire, which form landmarks in views across the island. Other typical Jersey buildings include manors, dovecotes, mills and structures relating to historic water uses, such as abreuvoirs and lavoirs. Farms are distinctive, often forming a cluster of buildings at the heads of valleys and accessed through a round-headed 'Jersey arch'. Traditional farm buildings are often two storeys, with windows allowing multiple uses. Typically, the farmhouses are built to face south, and their barns are built to face east and west.

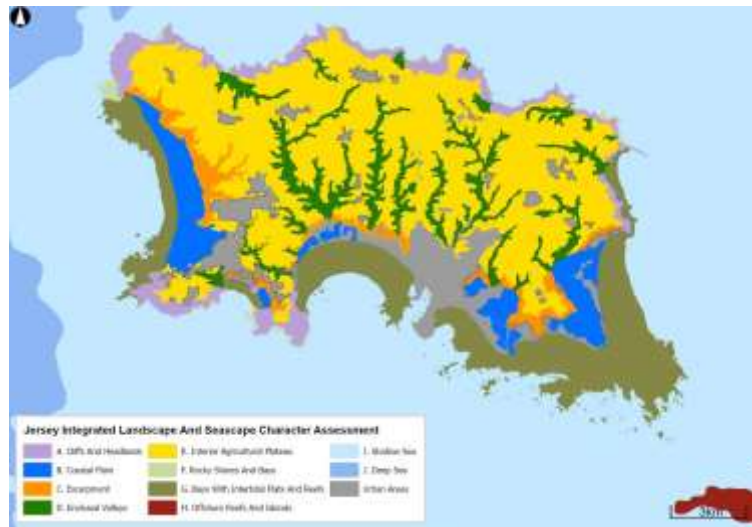
A legacy of defensive sites

Jersey's vulnerable location has resulted in a legacy of defensive sites spanning roughly 2000 years, from Iron Age coastal forts to structures relating to German occupation in World War II. Most of the defensive sites are coastal, and include distinctive landmarks such as Mont Orgueil castle, Elizabeth Castle, the distinctive round coastal 'Conway Towers' and the WW II range-finding towers at Les Landes, Corbière and Noirmont, which formed part of the German 'Atlantic Wall'.

Spectacular views

The longest and most spectacular views in Jersey are generally at the coast, where panoramas encompass land, sea and sky. This is where the different landscapes and seascapes meet, creating attractive compositions, and natural and built landmarks create focal points. Along the north coast, the offshore reefs draw the eye out to sea. The other Channel Islands and the French coast appear on the horizon. The sunsets are spectacular, particularly over the intertidal reefs. At night, dark skies over much of the island allow the stars to be appreciated, punctuated by the flashes from the lighthouses and beacons.

The varied nature of Jersey's physical environment is illustrated in this map, which shows 11 different types of area.



Climate

Jersey has an equable climate, warm in the summer with plenty of sunshine and relatively mild in the winter. Rainfall is comparatively modest and more concentrated in the winter months. Jersey's climate can best be described as being a little more favourable than resorts on the south coast of England.

The Government of Jersey publishes comprehensive historic [Climate Statistics](#). Table 1 shows key data.

Table 1 Jersey, key climate statistics

Month	Mean temperature (°c)	Sunshine hours	Sea water temperature (°c)	Rainfall Millimetres	Rain days
January	6.3	2.0	10	95	15
February	6.1	3.5	9	70	12

March	7.8	4.5	9	65	12
April	9.5	6.5	10	55	10
May	12.6	7.5	12	55	9
June	15.1	8.0	14	40	8
July	17.2	8.0	17	45	7
August	15.5	7.5	18	50	7
September	15.8	6.0	17	65	9
October	13.0	4.0	15	105	14
November	9.6	2.5	12	105	15
December	7.1	2.0	12	110	16
Total/average	14.5	5.2	13	865	133

Links with heritage

Jersey's natural environment cannot be separated from its history. For most of the second millennium England was either at war or in a state of tension with France. Various fortifications were built to protect the Island from French attack, taking advantage of the natural environment. Most prominent of these was Mont Orgeuil Castle, which occupies a commanding position on a hill in the east of the island.



Source: BAM Photos

Elizabeth Castle, St Aubin's Fort, Seymour Tower and Icho Tower are located on the foreshore and on the coast itself is a series of Martello and Conway towers. During the Second World War the German occupying forces built a number of fortifications in prominent geographical locations.



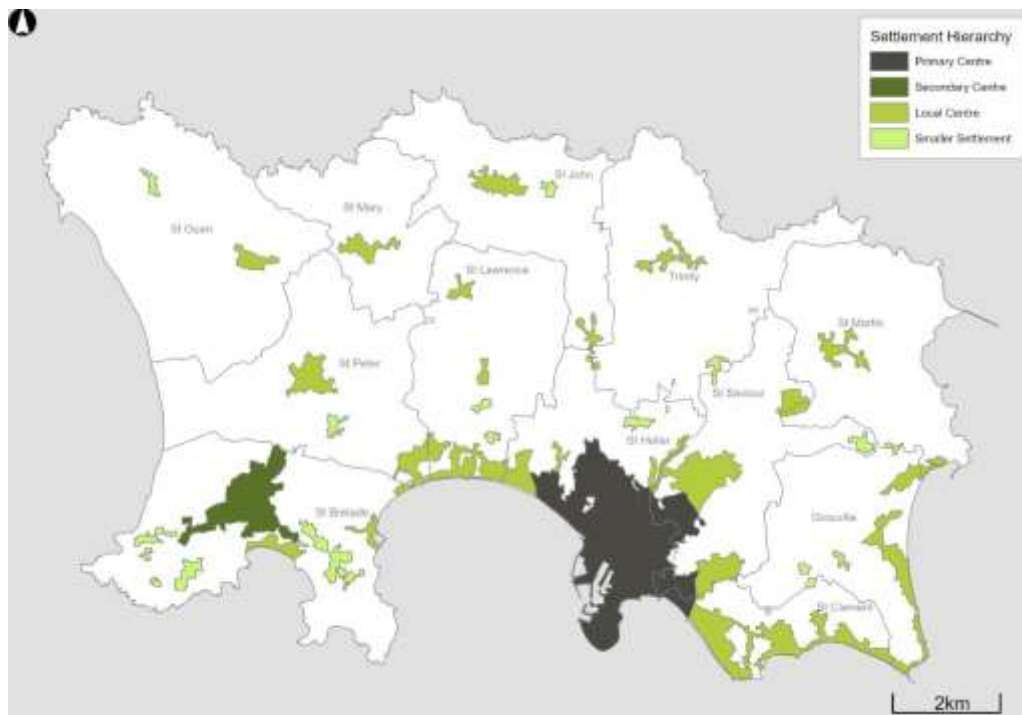
Importance of the natural environment to Jersey's economy

Jersey's economic history has been largely shaped by its natural environment. As early as the 13th Century ships carrying wine from France and the Mediterranean to England hugged the coast so passing close to Jersey and indeed the proceeds of shipwrecks proved to be a valuable addition to the economy. After Jersey became part of the English Crown in 1204 the conflict with France meant that Jersey became fortified, providing a natural boost to the economy.

Now, the sea is often seen as a barrier but before the advent of modern forms of transport the sea was more of a highway and Jersey's location enabled it to prosper in trading goods as diverse as cider and stockings. With everyone living close to the sea fishing has been an integral part of the Jersey economy for many centuries and this developed in such a way that the huge cod fishing industry developed in the 18th and 19th centuries. The sea provided another additional valuable resource in the form of vrac, a type of seaweed, which has been available in plentiful amounts and has served both as a fertiliser and as a source of fuel.

The north to south slope of the Island with the resultant streams has provided the basis for water Mills which were essential to grind corn.

The paper on parishes showed that population is concentrated in the southern parishes. This is illustrated in the map below which shows settlement patterns.



The map clearly shows the primary population centres in St Helier and the secondary centre in St Brelade. The local centres are predominantly based on the centres of the country parishes.