



**X-WOOD**  
CLADDING

long lasting  
facades

## Where can X-WOOD be used?

### Retrofit

X-WOOD cladding can be used in any situation where timber might traditionally be used. Ideal for replacing wood exterior facades, Gable Ends, Dormers and Roof Eaves.

### New Build

X-WOOD is the ideal product for any architectural project or multiple housing development creating an attractive, long lasting, low maintenance finish. With its high performance credentials X-Wood can be successfully used in coastal and highly exposed areas.

## Advantages

- ✓ No more painting
- ✓ Can be fixed horizontally or vertically
- ✓ Quick and easy to install
- ✓ Light-weight and easy to handle
- ✓ Environmentally friendly
- ✓ Looks and feels like wood
- ✓ Virtually maintenance-free
- ✓ Dimensionally stable



## X-WOOD and the environment



X-WOOD is manufactured in accordance with recognised environmental standard ISO 14001.

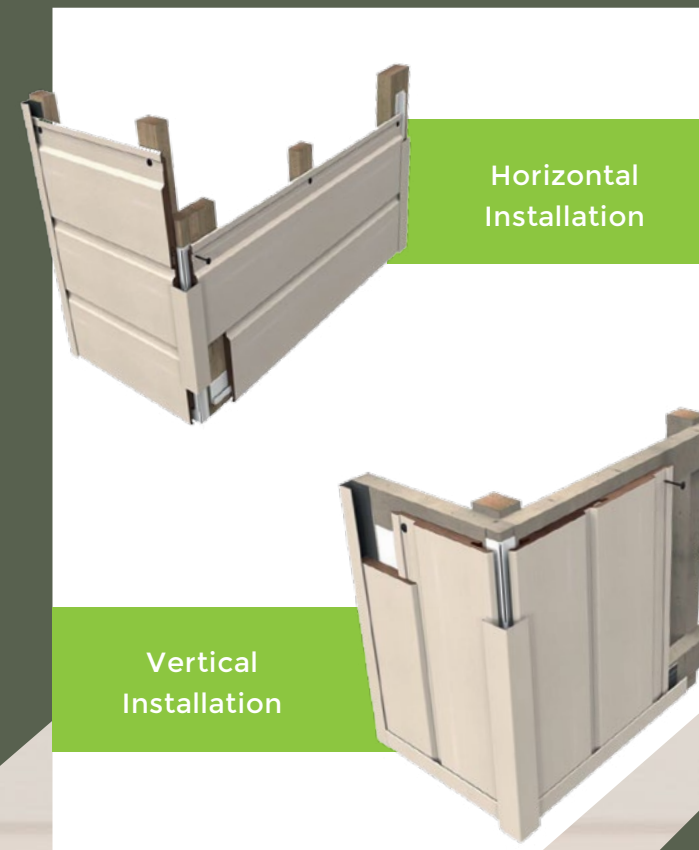
X-WOOD offers long life benefits. Produced to consistently perform over many years.

## Is X-WOOD difficult to install?

X-WOOD is easy to install using the same basic carpentry skills and tools required to fit standard timber cladding.

X-WOOD is a simple tongue and groove cladding system, complete with high quality aluminium finishing trims.

Quick and easy to fit for both skilled tradesman and DIY enthusiast.

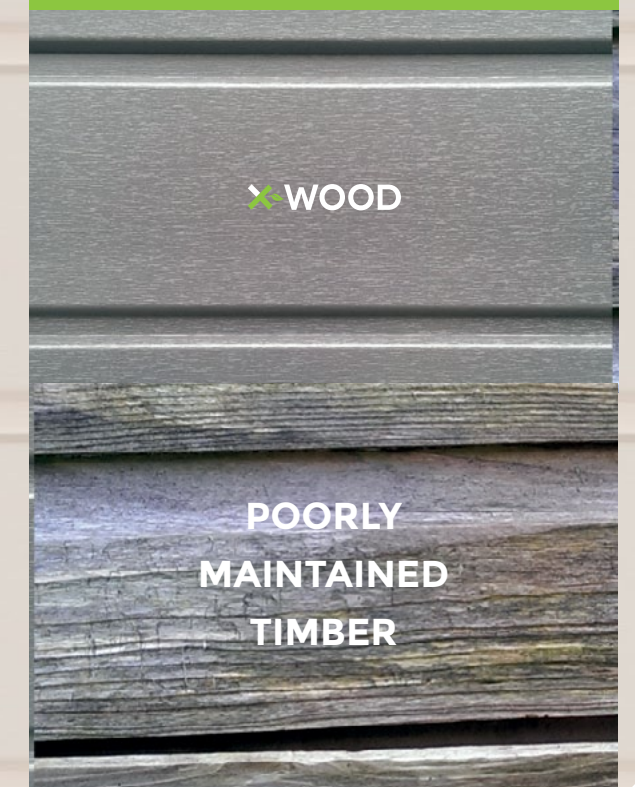


## X-WOOD requires virtually no maintenance!

X-WOOD is the informed choice for exterior facades. It has the natural appearance of wood without the disadvantages.

With its unique composition X-WOOD is impervious to moisture and will not support the growth of fungi, bacteria or organic matter.

X-WOOD puts an end to time consuming and costly painting. X-WOOD is a stable PVC-U product designed not to warp, split or delaminate.





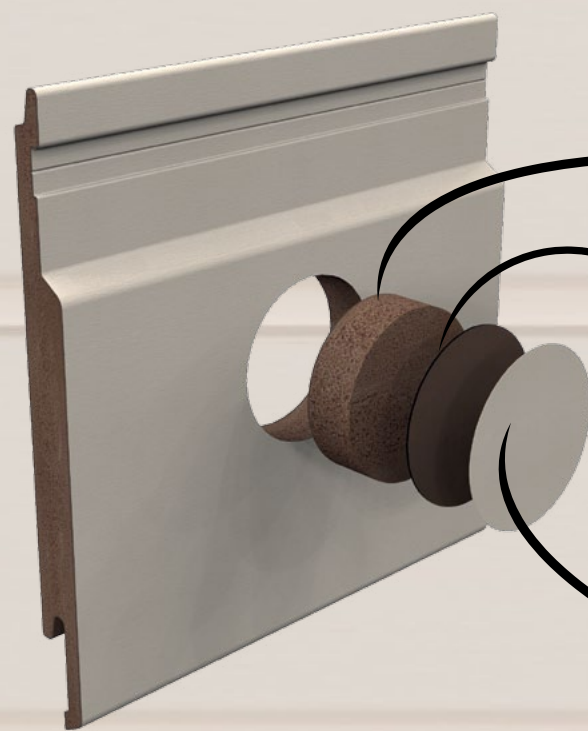


## Why is X-WOOD so unique?

X-WOOD is manufactured from a combination of three different layers of PVC, each with its own distinct high performance characteristics.

A heavy duty through-coloured plastic foam core is covered with a durable solid plastic skin and then coated with superior market leading Renolit colour film that features a subtle woodgrain effect finish.

Because of its unique composition and design X-WOOD cladding combines a highly durable board with an attractive modern finish.



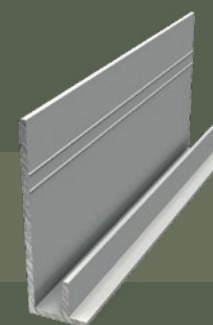
1 / Heavy Duty Core

2 / Durable Solid Plastic Skin

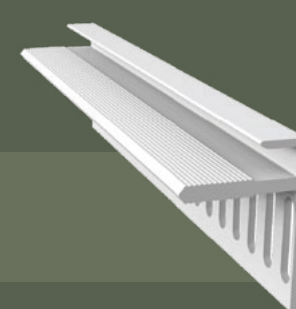
3 /  Colour Film

## Aluminium & PVC Accessories

A range of high performance fitting accessories. Two part trims feature an Aluminium outer section and a PVC inner section



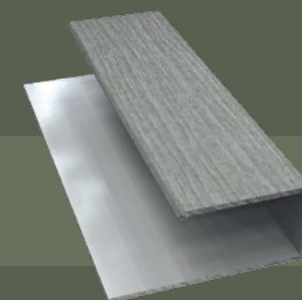
Aluminium  
Starter Trim  
FCA3123



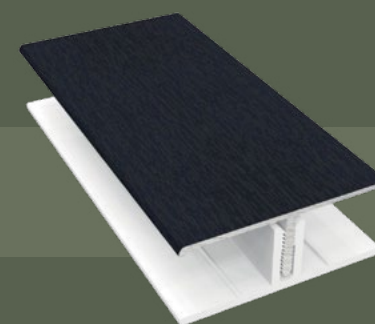
PVC Vented  
Starter Trim  
FC3123



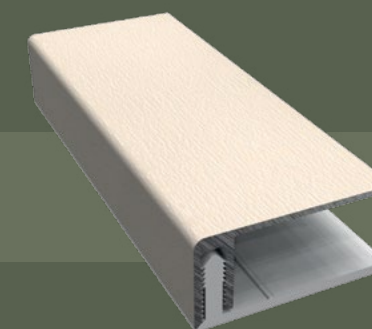
Aluminium & PVC  
Exterior Corner Trim  
FCA3043



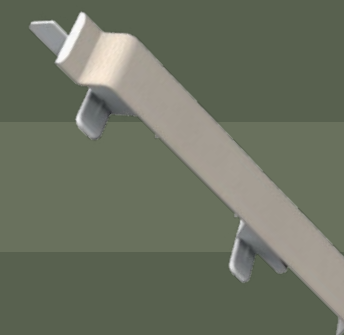
Aluminium 'J' Trim  
FCA3023



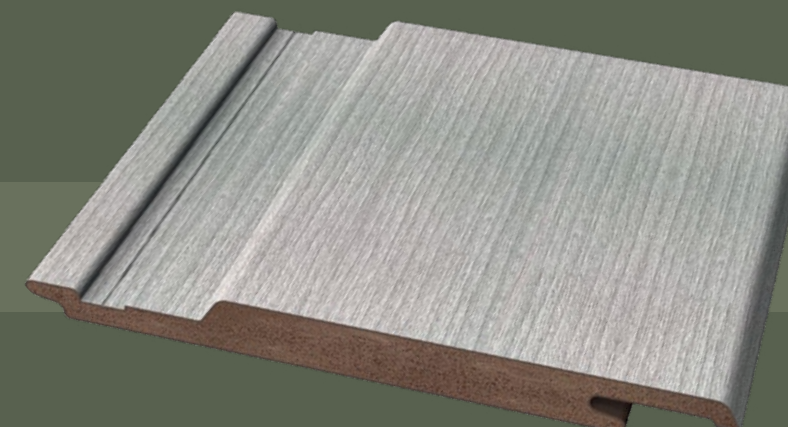
Aluminium & PVC 2 Part 'H' Trim  
FCA3153



Aluminium & PVC 2 Part 'U' Trim  
FCA3013



PVC Butt Joint  
FCV209



X-WOOD Cladding  
FCV143

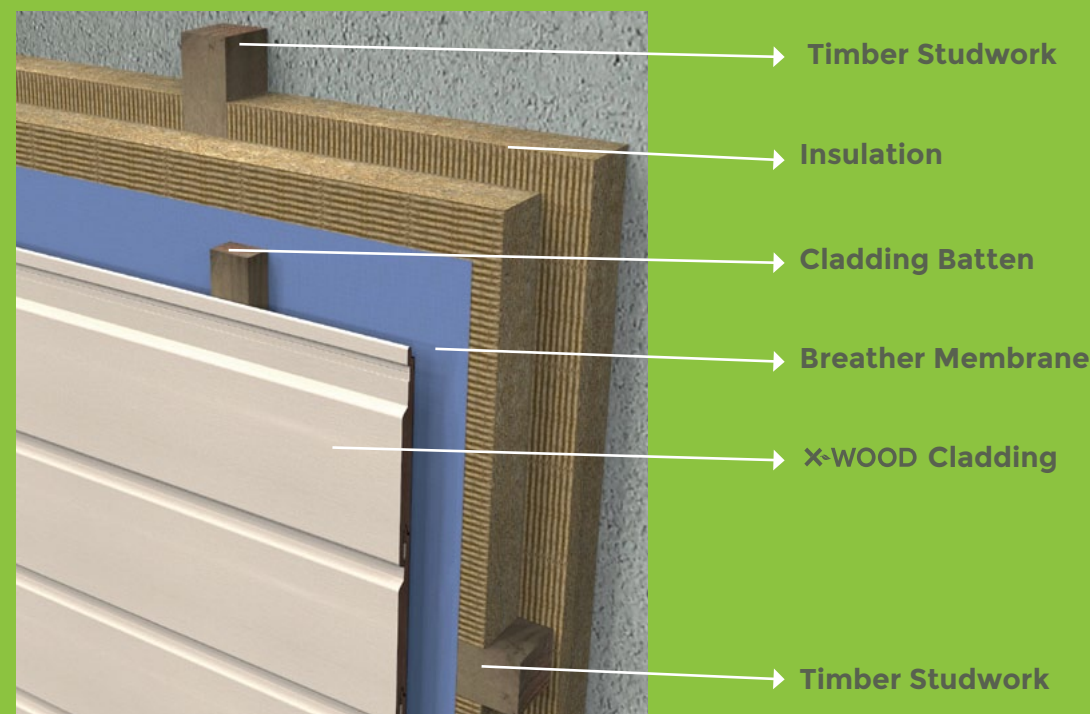
## Improve thermal efficient with X-WOOD

It is becoming increasingly important for any home improvement project or new build development to be thermally efficient.

Using X-WOOD cladding in conjunction with exterior insulation is the perfect way to improve carbon footprint and reduce home heating costs.

### BRE: A + Rated

When used with Standard Insulation Materials, PVC Cladding has been given an A+ Rating by the Building Research Establishment's (BRE) Green Guide to Specification.



## Installation – see page 8 & 9 for illustrations

Fix breather membrane (5) to substrate in accordance with membrane manufacturer's recommendations.

Fix vertical cladding battens (4) to substrate ensuring battens are uniformly spaced at 400mm c/c, aligned and plumb and that screw heads are slightly below the surface to prevent interference with the cladding.

Use double battens at edges, corners and joints.

Cladding Battens should be 27mm x 40mm treated softwood for light colours (White, Cream and Greyed Cedar) and 37mm for dark (Anthracite Grey, Wine Red and Golden Oak)

Fix Ventilated Starter Trim profiles (2) along base and top of area to be clad, ensure they are straight and level. Note that the cladding will extend below the Ventilated Starter Trim by 25mm.

**Note: Use the outer part of 2 part 'U' trim (FCA3103) for closer trim.**

Fix first parts of any 2 part Part Trims (7a), (8a) or (9a). All trims should be screw fixed at minimum 250mm c/c, or at each batten. include 10mm expansion gap at ends of trims.

Where 2 part trims are being used, cut the first parts only; the second part of 2 part trims should not be cut yet.

Screw\* fix first cladding board (1) to Ventilated Starter Trim (2) ensuring that the hook at the rear of the cladding panel is fully engaged in the Ventilated Starter Trim. Ensure that the starter trim and the first board are level.

\*Screws should be corrosion resistant pan head, 30mm long x 3.5mm gauge with a head diameter of 7mm. Recommend to use Freefoam Cladding screws (ACSS500).

**Ensure the recommended expansion gap of 8mm is allowed for at all cladding edges and joints.**

Cladding should be screw fixed at every batten and the fixing screw should be driven flush into the fixing groove so that it does not interfere with the next board.

Continue fitting the boards, ensuring that the hook at the rear of the cladding board is fully engaged down onto the previous board before screw fixing. Regularly check that boards are still level as work proceeds.

At the top of the installation it may be necessary to reduce the width of the final plank. Ensure that 12mm of the ventilation grooves are left open.

**Continuous ventilation from the bottom to the top of the installation is critical to the performance of the cladding.**

Once all cladding boards are fixed in place, measure, cut and fix second parts of 2 part trims (7b), (8b) or (9b) to finish installation.

**Note: Use the outer part of 2 part 'U' trim (FCA3103) for closer trim.**

Where required fit a cover strip or drip trim to prevent rain from entering the cavity at the top of the installation.

For installations above 3.2m tall, a horizontal break will be required and for installations greater than 10m long a vertical break will be required.

**Ensure that all installations comply with local Building Regulations and general good building practice.**

### Maintenance

X-Wood Planks require very little maintenance. High Pressure cleaning is recommended (half power). Do not use solvents or aggressive cleaning products.

### Storage

Prior to installation X-Wood cladding should be stored out of direct sunlight.

Check the cladding surface for damage prior to installation. Complaints of surface defects will not be accepted after installation is complete.

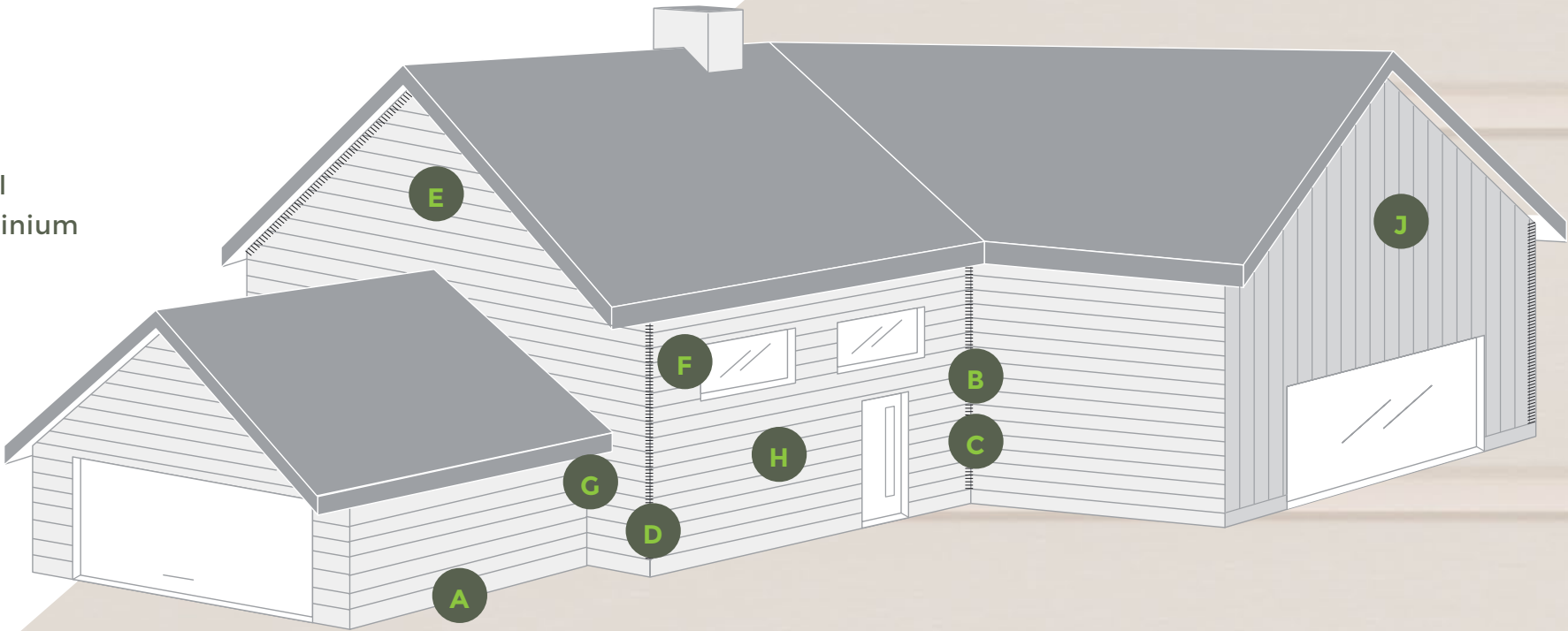
**PLEASE NOTE**  
Refer to the more detailed installation instruction insert in the cladding packs prior to installation.



# Typical Installation Details

- 1 / X-WOOD Cladding
- 2 / FC3123/FC3123 Vented Starter Trim
- 3 / FCA3163WG Vented Closer Trim
- 4 / Cladding Battens
- 5 / Breather Membrane
- 6 / FCA3023 - 'J' Trim
- 7a/ FCA3013 - Two Part 'U' Trim - Part 1 PVC
- 7b/ FCA3013 - Two Part 'U' Trim - Part 2 Aluminium

- 8a FCA3043 - 2 Part External Corner Trim - Part 1 PVC
- 8b FCA3043 - 2 Part External Corner Trim - Part 2 Aluminium
- 9a FCA3153 - 2 Part 'H' Trim - Part 1 PVC
- 9b FCA3153 - 2 Part 'H' Trim - Part 2 Aluminium
- 10 FCV209 - Butt Joint
- 11 Timber Studwork



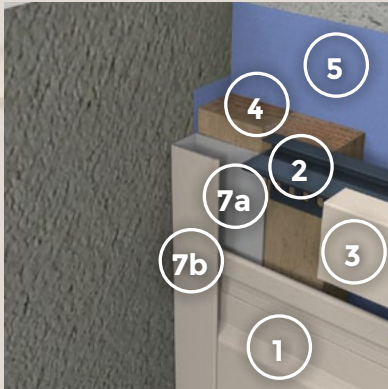
**A** Starter Trim



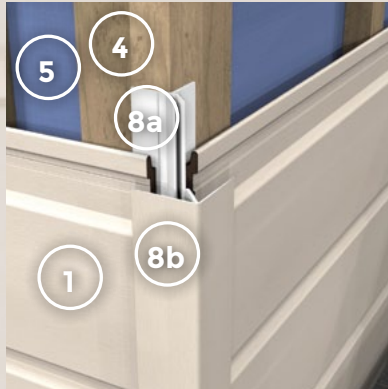
**B** 'J' Trim



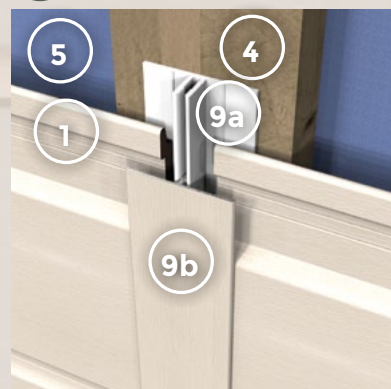
**C** 2 Part 'U' Trim



**D** External Corner



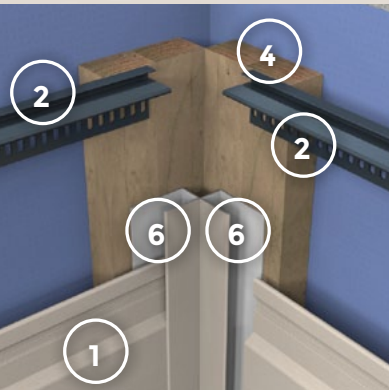
**E** 'H' Trim Joint



**F** Window/Door Reveal



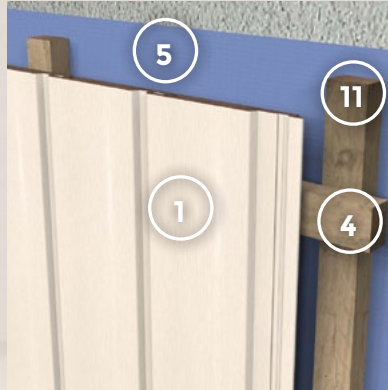
**G** Internal Corner



**H** Butt Joint



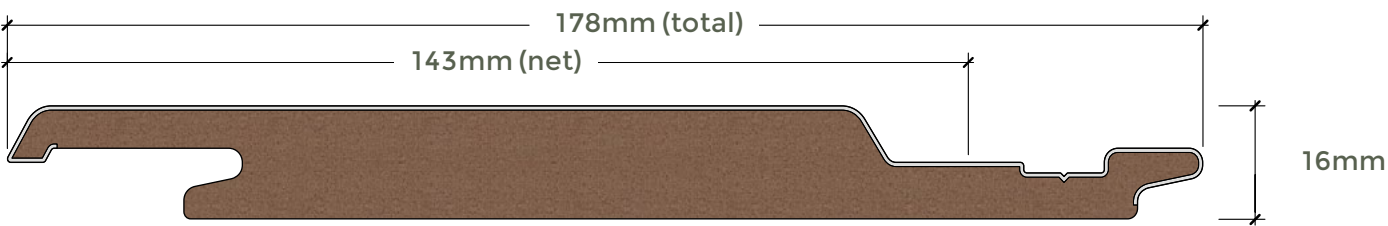
**J** Vertical Cladding





Technical Information

FCV143 X-WOOD Cladding



**Material:** Cellular PVC/Renolit High Performance Film  
**Thickness:** 16mm  
**Width:** 178mm Total/143mm NET  
**Length:** 5m  
**Weight:** 1.10Kg/M<sup>1</sup> ±5% (6.25Kg/Plank ±5%)  
**Density:** 500Kg/M<sup>3</sup> ±2%  
**Coefficient of Expansion:** 40 x 10<sup>-6</sup> / °C (DIN 53377)  
**Coverage:** 1.43m<sup>2</sup>/Pack



X-WOOD 143 RENOLIT



Product Code	Product Description	Length	Pack Quantity	Cream White	Wine Red	Greyed Cedar	Anthracite	White	Oak
FCV143	X-WOOD Cladding	5M	2X5M						
FCA3123	Aluminium Starter Trim	3M	1	Aluminium	Aluminium	Aluminium	Aluminium	Aluminium	Aluminium
FC3123	Vented Starter Trim	3M	1						
FCA3013WG	2 Part 'U' Trim	3M	1						
FCA3023WG	'J' Trim	3M	1						
FCA3043WG	2 Part External Corner Trim	3M	1						
FCA3153WG	2 Part 'H' Trim	3M	1						
FCV209WG	Butt Joint	3M	1						

NOTE

The colours within this brochure are an indication of the product colour.

For the exact colour consult product samples we advise you to refer to the swatch or product samples.



# X-WOOD

CLADDING

[www.freefoam.com](http://www.freefoam.com)

**IRELAND**

Central Commercial Park  
Centre Park Road  
Cork

T: 02 496 6311

F: 012 496 5273

**UK**

77-83 St James Mill Road  
Northampton  
NN5 5JP

T: 01604 591110

F: 01604 580299



Manufactured by

 **Freefoam**  
Building Products

