

Assessment of Potential Reptile Habitat Parc Solar Traffwll

July 2020

Prepared for Sirius Planning

by

Wychwood Biodiversity Limited

Report Date	Version	Author	Approved
July 2020	1	C Halliday GradCIEEM	Dr G Parker MCIEEM



Contents

Assessment of Potential Reptile Habitat Traffwll July 2019: Summary.....	2
Appendix 1: Plot 1 habitat identified as potentially suitable for reptiles.....	3
Appendix 2. Plot 3, habitat identified as potentially suitable for reptiles.....	4
Appendix 3. Plot 4, habitat identified as potentially suitable for reptiles.....	5
Appendix 4. Plot 5, habitat identified as potentially suitable for reptiles.....	6
Appendix 5. Plot 6, habitat identified as potentially suitable for reptiles.....	7
Appendix 6. Plots 8 & 9, habitat identified as potentially suitable for reptiles.	8

Parc Solar Traffwll, Potential Reptile Habitat Report

Assessment of Potential Reptile Habitat Traffwll July 2019: Summary

This document summarises the findings of a reptile habitat suitability survey carried out by Wychwood Biodiversity Limited on behalf of Sirius Planning and Low Carbon as part of the ecological assessment in support of the proposed Traffwll solar farm.

The reptile habitat assessment was carried out during three site visits between May and July 2019 and includes all seven land Plots currently under consideration.

The main habitats identified as potentially suitable for reptiles included field boundary features such as dry-stone walls and ditches, but also rocky outcrops and small areas of heath/scrub, ponds and marshy areas. The results are summarised in the following table and their location indicated on the maps on pages 3-8. The main open field areas were not considered suitable habitat for reptiles due to intensive livestock grazing (sheep, cattle and horses) or regular cutting for grass crops (silage and hay).

Potential reptile habitat	Present in Plots	Species it may support
Ditches/streams with long grass/wetland plants	1, 6	Grass snake
Rocky outcrops with scrubby vegetation e.g. gorse	1, 6, 9	Common Lizard, Slow Worm, possibly Adder
Stone heap	1	Common Lizard
Dry stone walls	1, 4, 5	Common Lizard, possibly Slow Worm
Areas of heath/scrub	3	Common Lizard and Grass Snake
Ponds	4	Grass Snake
Marshy edge with long grass/wetland plants	4	Grass Snake

Appendix 1: Plot 1 habitat identified as potentially suitable for reptiles.



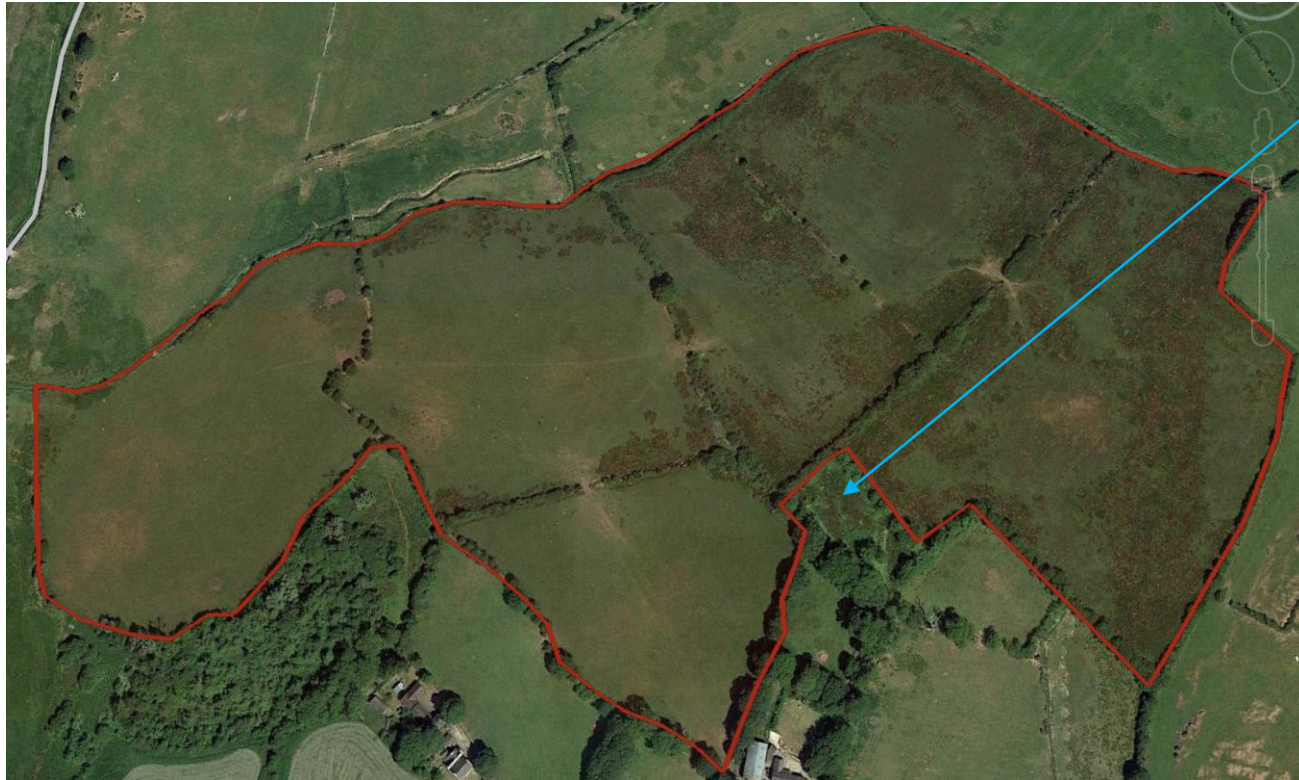
Multiple ditches and stream with long grass/wetland plants. Potential habitat for grass snakes.

Rocky outcrop with scrubby vegetation, enclosed with fence. Potential habitat for slow worms. Solar deployment not possible.

Stone heap – potential habitat for common lizards.

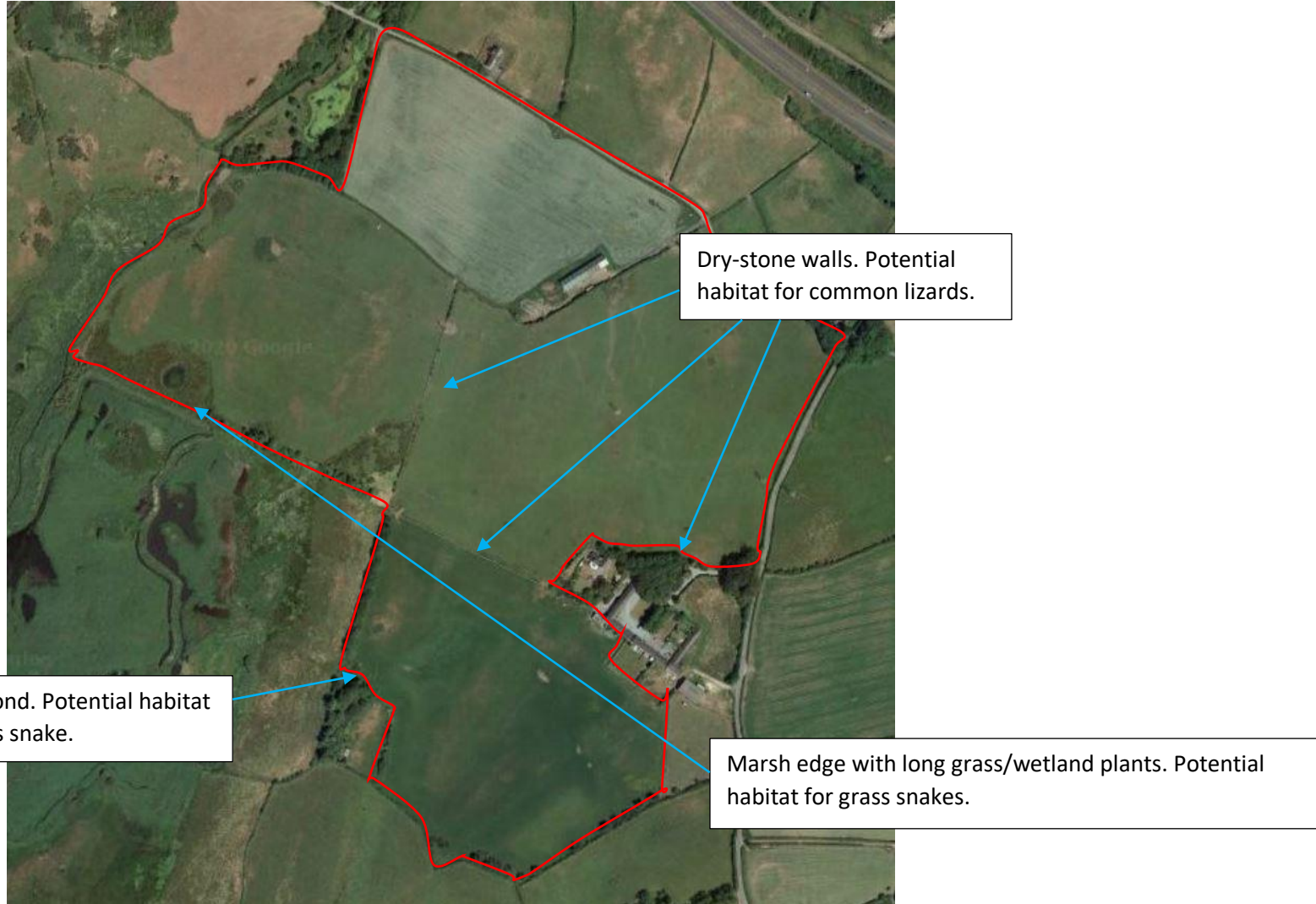
Dry-stone wall runs along the southern boundary. Potential habitat for common lizards, particularly given proximity of adjacent heathland to south (outside proposed deployment area).

Appendix 2. Plot 3, habitat identified as potentially suitable for reptiles.



Small area of heathland and scrub next to deployment area is potential habitat for common lizards and grass snakes

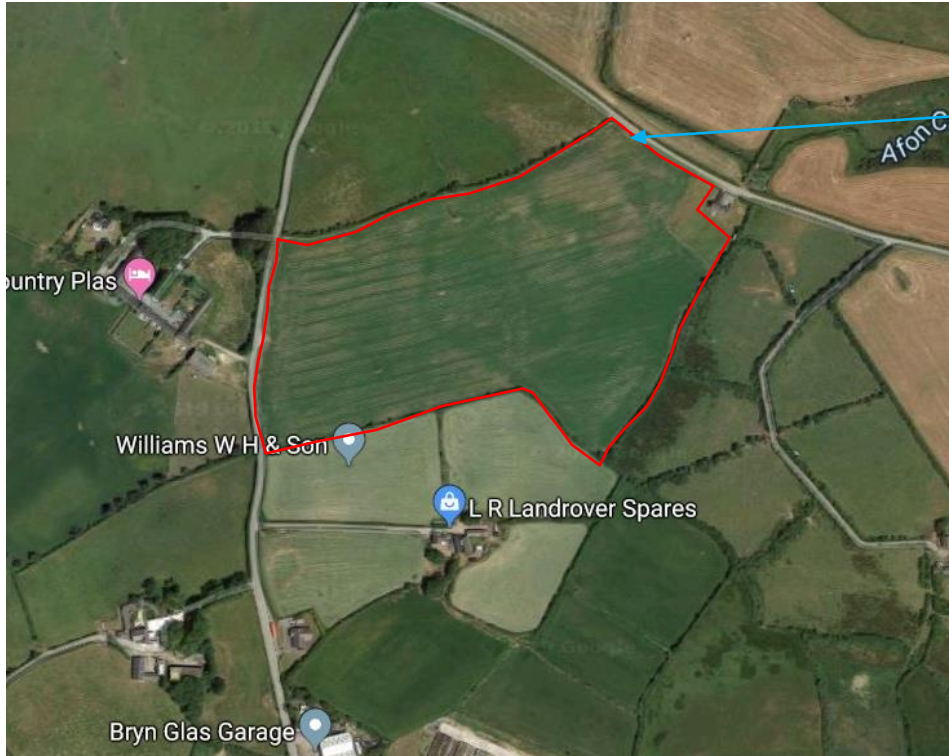
Appendix 3. Plot 4, habitat identified as potentially suitable for reptiles



Parc Solar Traffwll, Potential Reptile Habitat Report

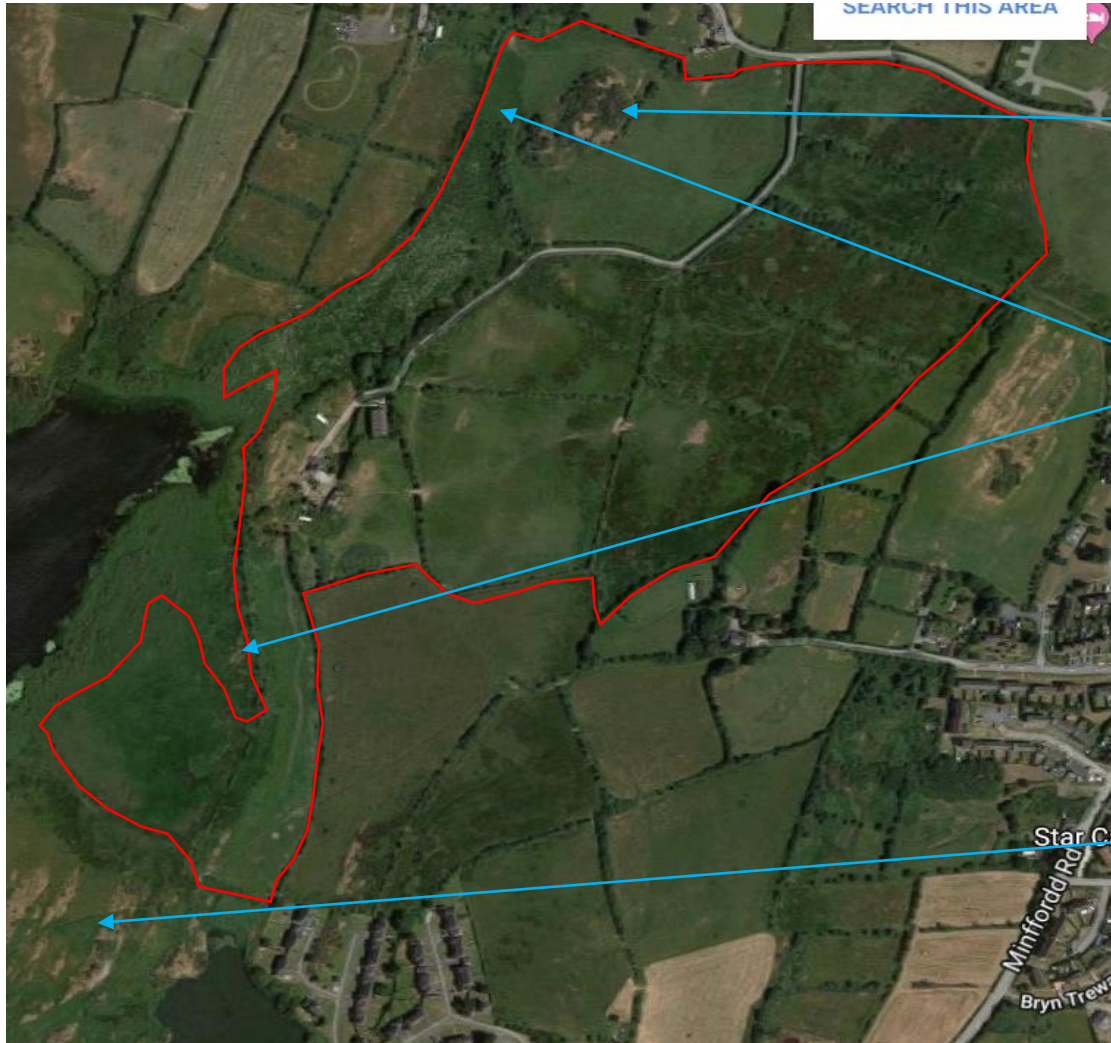


Appendix 4. Plot 5, habitat identified as potentially suitable for reptiles.



Dry-stone base to entire field boundary. Potential habitat for common lizard.

Appendix 5. Plot 6, habitat identified as potentially suitable for reptiles.



Extensive rocky outcrop with gorse – potential habitat for common lizard and possibly adder. Solar deployment not possible.

Ditch and marsh edge with long grass/wetland plants. Potential habitat for grass snakes.

Heathland area with potential habitat for common lizard and possibly adder. Outside deployment area.

Appendix 6. Plots 8 & 9, habitat identified as potentially suitable for reptiles.



Rocky outcrop with potential habitat for common lizards and slow worms. Not enclosed by stock fencing.

Multiple ditches and one pond with long grass/wetland plants. Potential habitat for grass snakes.

Dry-stone walls (southern & western boundaries of both fields). Good habitat for common lizard – two individuals seen. Potential habitat for slow worms.