



Working on
behalf of

HS2

Notice of temporary closure of Cryfield Grange Road

February 2020 | www.hs2.org.uk

High Speed Two (HS2) is the new high speed railway for Britain. Early works for HS2 are carried out by LM – a joint venture between Laing O'Rourke and J. Murphy & Sons.

Works planned near the Crackley

Over the coming months, we'll be working near Crackley to construct a bellmouth road entrance to better access our work sites along Cryfield Grange Road. This will allow for the construction of new habitats for wildlife along the length of HS2 contributing to the creation of a 'green corridor'.

We will need traffic management

LM will be temporarily closing a section of Cryfield Grange Road to vehicle traffic in order to construct the bellmouth entrance to our work sites to the south of the road. This will help to create a safe working area for our workers and the general public.

The closure will be in place between **9:30am and 3:30pm** during the week of **17th February**. While this section of road is closed, a diversion route will be in operation along Crackley Lane and the A429. Please be aware that the ongoing closure of Bockendon Road is still in place.

Pedestrians, cyclists and horse riders will still be able to use the roadway while the closure is in effect. Traffic Marshalls will escort non-motorised users safely through the works if required.

Why we are doing this work.

We need to prepare as much of the route as possible over the coming months. This will ensure that our main construction work can commence on time.

If you have a question about HS2 or our works, please contact our HS2 Helpdesk team on 08081 434 434 or email hs2enquiries@hs2.org.uk

Notification



Duration of works

From the week commencing 17th February for one week, subject to site and weather conditions.

What to expect

You will see us working along the side of Cryfield Grange Road during the day.

An increase in construction traffic.

Creation of a bellmouth access point on Cryfield Grange Road.

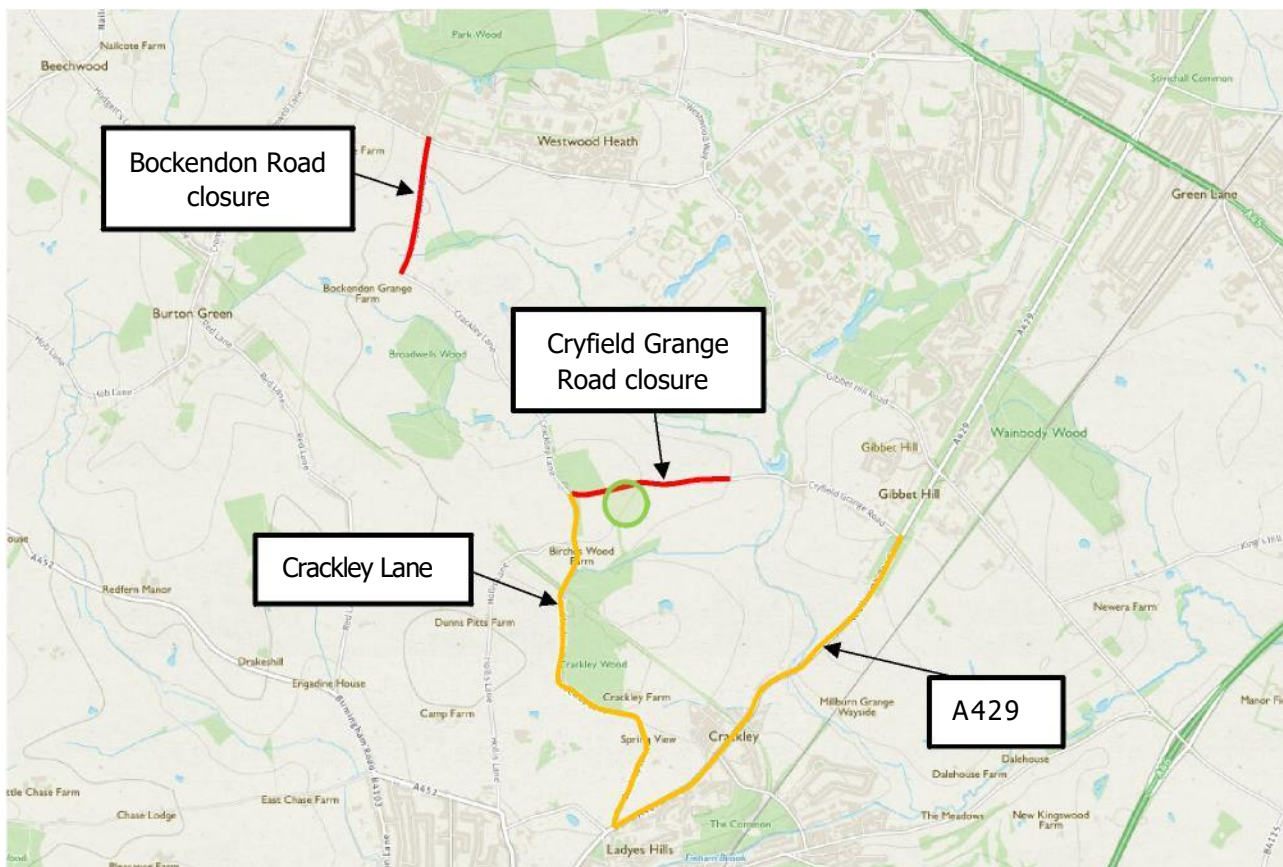
What we will do

Keep all sites safe and secure, while keeping disruption to a minimum.




Ensure road closure and diversion routes are clearly marked.

Sign up for regular updates at hs2inwarwickshire.co.uk

Diversion route for motorised vehicles.



Contains Ordnance Survey data ©Crown copyright and database right 2017

-  Road closure to vehicle traffic
-  Vehicle traffic diversion route
-  Bellmouth construction zone

Notification



About our Community and Business Funds

HS2 offers two funds that are available to local communities and businesses in Birmingham and the West Midlands, to help with any disruption caused by our construction work. These are the Community and Environment Fund (CEF) and the Business and Local Economy Fund (BLEF).

The CEF is designed to give communities the opportunity to share in the benefits of HS2. It is an allocated fund that communities are able to apply for, to help to support local projects that aim to improve their local area.

The BLEF is designed to support local economies that may be disrupted by the construction of HS2. BLEF grants are for local business support organisations and local authorities to help maintain business activity in local communities.

For more information about each of these funds, including how to apply, please visit: www.groundwork.org.uk/hs2funds



About our 'HS2 in Warwickshire' website

The planning and construction of HS2 is a huge operation – it is currently the largest infrastructure project in Europe.

It's important to us to keep you up to date about the progress of the project and any work that may impact you or your community. We have a series of community-focused websites where you can find out what is happening in your local area and sign up for updates about our activities.

Our dedicated website for the Warwickshire area is available at: hs2inwarwickshire.co.uk

On this website, you can also sign up to receive regular news alerts of work happening in your area and see the list of upcoming events offering you the opportunity to meet with HS2.



Keeping you informed

We are committed to keeping you informed about work on HS2. This includes ensuring you know what to expect and when to expect it, as well as how we can help.

Residents' Charter and Commissioner The Residents' Charter is our promise to communicate as clearly as we possibly can with people who live along or near the HS2 [route](#).
www.gov.uk/government/publications/hs2-residents-charter

We also have an independent Residents' Commissioner whose job is to make sure we keep to the promises we make in the Charter and to keep it under constant review. Find reports at: www.gov.uk/government/collections/hs2-ltd-residents-commissioner

You can contact the Commissioner at: residentscommissioner@hs2.org.uk

Construction Commissioner

The Construction Commissioner's role is to mediate and monitor the way in which HS2 Ltd manages and responds to construction complaints. You can contact the Construction Commissioner by emailing: complaints@hs2-cc.org.uk

Property and compensation

You can find out all about HS2 and properties along the line of route by visiting: www.gov.uk/government/collections/hs2-property
Find out if you're eligible for compensation at: www.gov.uk/claim-compensation-if-affected-by-hs2

Holding us to account

If you are unhappy for any reason you can make a complaint by contacting our HS2 Helpdesk team. For more details on our complaints process, please visit our website: www.hs2.org.uk/how-to-complain

Contact Us

Contact our HS2 Helpdesk team all day, every day of the year on:

 Freephone **08081 434 434**

 Minicom **08081 456 472**

 Email hs2enquiries@hs2.org.uk

Write to:

FREEPOST

HS2 Community Engagement

Website www.hs2.org.uk

To keep up to date with what is happening in your local area, visit: www.hs2inwarwickshire.co.uk

Please contact us if you'd like a free copy of this document in large print, Braille, audio or easy read. You can also contact us for help and information in a different language.

HS2 Ltd is committed to protecting personal information. If you wish to know more about how we use your personal information please see our Privacy Notice <https://www.gov.uk/government/publications/high-speed-two-ltd-privacy-notice>