



Working on  
behalf of

# HS2

## Notification



# Notice of temporary closure: Waste Lane, Berkswell

November 2020 | [www.hs2.org.uk](http://www.hs2.org.uk)

High Speed Two (HS2) is the new high speed railway for Britain. Early works for HS2 are now underway in your area, carried out by LM – a joint venture between Laing O'Rourke and J. Murphy & Sons.

**The timeframes in this notification may be subject to change. For the latest information, please refer to the websites [one.network](http://one.network) and [hs2insolihull.co.uk](http://hs2insolihull.co.uk), and on-the-road signs.**

### Diversion of Waste Lane for up to one week

A temporary closure and diversion of a small section of Waste Lane in Berkswell is due to start on **Monday 30 November** for up to one week.

In our August 2020 update about the Kenilworth Greenway (reference number HS2-EW-LM-Ph1-Ar-No-N1-OTH-30-08/07/2020), we noted that a small section of Waste Lane would need to be closed towards the end of 2020 to help us finish building the temporary diversion of the Kenilworth Greenway. We're completing a crossing point for the temporary Greenway over Waste Lane.

We're also at work in Burton Green, where we have re-opened Cromwell and Hob Lanes to traffic. The temporary Greenway is due to open this winter – more information is available in the August update on [hs2inwarwickshire.co.uk](http://hs2inwarwickshire.co.uk).

### Access to properties

If your property frontage is within the closure points, we will work with you to manage access into and out of your property. Residents may sometimes experience a short delay while we move machinery or create a safe path in or out of a closed area during our working hours.

### HS2 during COVID-19

We are continually reviewing work on our sites in line with Government and Public Health England (PHE) advice on dealing with COVID-19. The Government's current COVID-19 strategy makes clear that construction activity can continue as long as it complies with this guidance. The health and safety of our workforce and the communities we affect is our key priority. Sites that are working are operating within PHE and construction industry guidelines.

### Duration of road closure

24/7 for up to one week from Monday 30 November.

### Our working hours

Generally, between 8.00am and 6.00pm, Monday to Friday.

We might be on site for up to one hour before or after these times, to set up or pack up.

### What to expect

Potential traffic delays during peak times. Potential longer journey times.

Some noise from machinery.

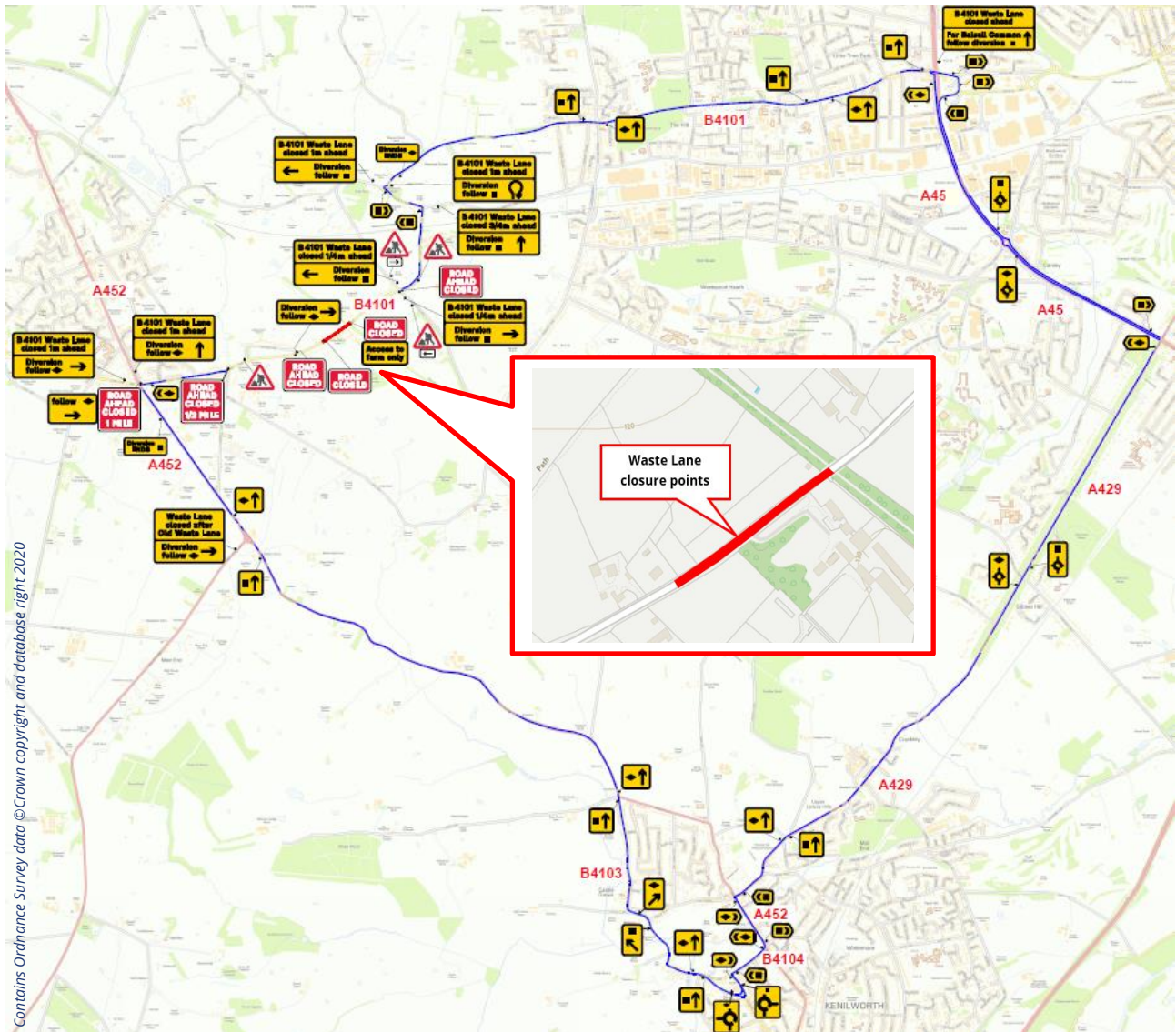
### What we will do

Keep disruptions to a minimum and maintain access to properties.

Ensure **one.network** is updated with traffic management details.

Maintain diversion signs.

# Map of Waste Lane diversion route



## Waste Lane diversion route

Use the following roads from 30 November to 6 December:

- B4101 to A45; A45 to A429; A429 to A452; A452 to B4104; B4104 to B4103; B4103 to A452; A452 to B4101.

Check the latest details at the [one.network](https://www.one.network) website.

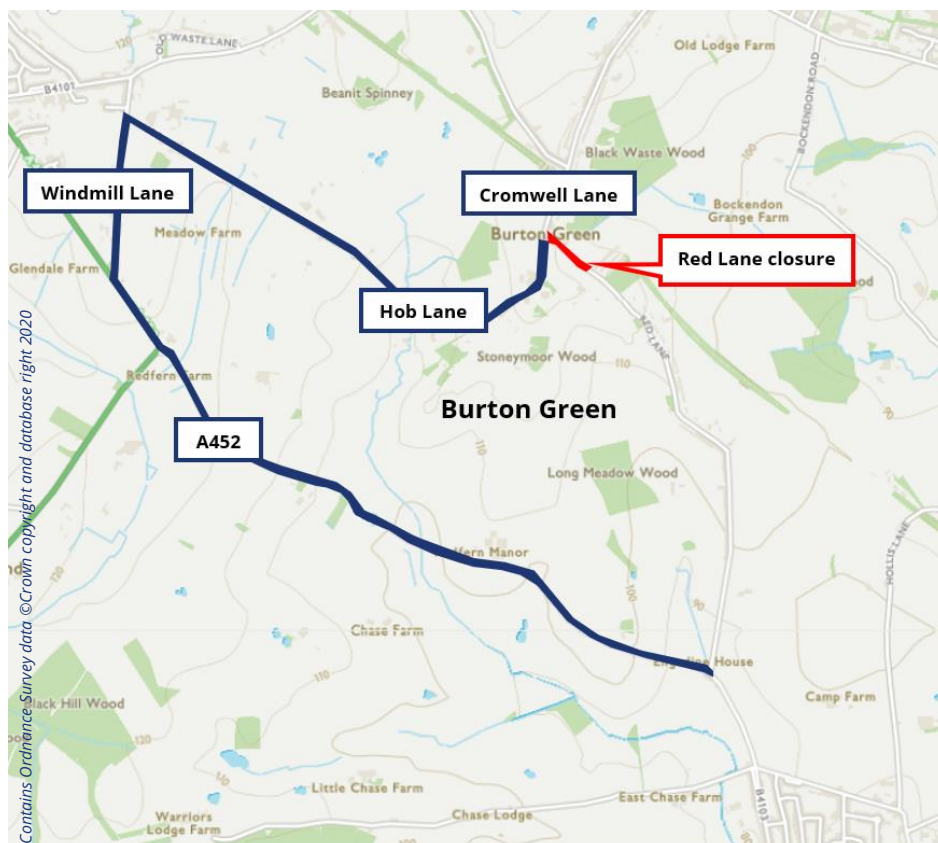
# Update on Burton Green traffic management

LM's work to build the temporary diversion of the Kenilworth Greenway through Burton Green is due to finish in winter. We're working as quickly and as safely as possible to complete the temporary Greenway and lift all our traffic management in Burton Green.

We have re-opened Cromwell and Hob Lanes to vehicles, using single-file traffic and temporary traffic lights. A short section of Red Lane needs to remain closed for the duration of our work. We'll continue to maintain access to Red Lane properties located within the closure points.

The current closure of Red Lane is needed so we can reduce our overall construction programme for the temporary Greenway.

The latest information about Burton Green traffic management will be available at the websites [one.network](https://one.network) and [hs2inwarwickshire.co.uk](https://hs2inwarwickshire.co.uk).



## Red Lane diversion route

Use the following roads until late 2020:

- Cromwell Lane; Hob Lane; Windmill Lane; A452; Red Lane.

Check the latest details at the [one.network](https://one.network) website.

# Keeping you informed

We are committed to keeping you informed about work on HS2. This includes ensuring you know what to expect and when to expect it, as well as how we can help.

## Residents' Charter and Commissioner

The Residents' Charter is our promise to communicate as clearly as we possibly can with people who live along or near the HS2 route. [www.gov.uk/government/publications/hs2-residents-charter](http://www.gov.uk/government/publications/hs2-residents-charter)

We also have an independent Residents' Commissioner whose job is to make sure we keep to the promises we make in the Charter and to keep it under constant review. Find reports at: [www.gov.uk/government/collections/hs2-ltd-residents-commissioner](http://www.gov.uk/government/collections/hs2-ltd-residents-commissioner)

You can contact the Commissioner at: [residentscommissioner@hs2.org.uk](mailto:residentscommissioner@hs2.org.uk)

## Construction Commissioner

The Construction Commissioner's role is to mediate and monitor the way in which HS2 Ltd manages and responds to construction complaints. You can contact the Construction Commissioner by emailing: [complaints@hs2-cc.org.uk](mailto:complaints@hs2-cc.org.uk)

## Property and compensation

You can find out all about HS2 and properties along the line of route by visiting: [www.gov.uk/government/collections/hs2-property](http://www.gov.uk/government/collections/hs2-property)  
Find out if you're eligible for compensation at: [www.gov.uk/claim-compensation-if-affected-by-hs2](http://www.gov.uk/claim-compensation-if-affected-by-hs2)

## Holding us to account

If you are unhappy for any reason you can make a complaint by contacting our HS2 Helpdesk team. For more details on our complaints process, please visit our website: [www.hs2.org.uk/how-to-complain](http://www.hs2.org.uk/how-to-complain)

## Contact Us

Contact our HS2 Helpdesk team all day, every day of the year on:

 Freephone **08081 434 434**

 Minicom **08081 456 472**

 Email **[hs2enquiries@hs2.org.uk](mailto:hs2enquiries@hs2.org.uk)**

Write to:

**FREEPOST**

**HS2 Community Engagement**

Website **[www.hs2.org.uk](http://www.hs2.org.uk)**

To keep up to date with what is happening in your local area, visit: **[www.hs2inyourarea.co.uk](http://www.hs2inyourarea.co.uk)**

**Please contact us if you'd like a free copy of this document in large print, Braille, audio or easy read. You can also contact us for help and information in a different language.**

HS2 Ltd is committed to protecting personal information. If you wish to know more about how we use your personal information please see our Privacy Notice <https://www.gov.uk/government/publications/high-speed-two-ltd-privacy-notice>

**Reference number:** HS2-EWLM-Ph1-Ar-No-N1-Traf-36-30/11/2020

High Speed Two (HS2) Limited, registered in England and Wales.

Registered office: Two Snowhill, Snow Hill Queensway, Birmingham B4 6GA.

Company registration number: 06791686. VAT registration number: 181 4312 30.