



# Notice of work at the A43, site investigations and compound set up

February 2021 | [www.hs2.org.uk](http://www.hs2.org.uk)

High Speed Two (HS2) is the new high speed railway for Britain.

We are continually reviewing the works on our construction sites in line with Government and Public Health England (PHE) advice on dealing with COVID-19. The Government's current strategy makes it clear that construction activity can continue as long as it complies with this guidance. Please be assured that only sites that can operate within the guidelines are operational. All sites will remain under constant review. We have postponed all face-to-face engagement events and meetings and have put in place a number of channels to communicate with communities, such as letters and phone calls, as well as updates and alerts from each of the local community websites. You can sign up for regular updates in your local area at

[https:// www.hs2.innorthants.co.uk](https://www.hs2.innorthants.co.uk)

## What are we doing?

We are setting up our compound and temporarily diverting the A43 to carry out our construction activities. This will include:

1. Ground Investigation (GI) works
2. Utility works and surveys including trial holes
3. Build an access into the compound
4. Setting up a works compound
5. Localised clearance of vegetation and fencing
6. Excavation, movement and storage of earthworks

## When will these works take place?

We will be starting these works in March. Ground and site investigations and preparation activities such as vegetation clearance will take place first. We will then start construction of the access off Radstone Road and set up the compound.

**If you have a question about HS2 or our works, please contact our HS2 Helpdesk team on 08081 434 434 or email [hs2enquiries@hs2.org.uk](mailto:hs2enquiries@hs2.org.uk)**

## Duration of works

Works will start in March and continue through 2021

Normal working hours:

Monday to Friday

8.00am – 6.00pm

Saturdays

8.00am – 1.00pm

Our contractors may be on site for one hour's start-up and shutdown either side of these times.

## What to expect

Varied activities with both quiet and busier periods.

Traffic management on some local roads and some additional traffic.

Closures of the northbound A43 carriageway and Radstone Road for specific activities.

Noise from equipment used for the works.

## What we will do

Manage any environmental impacts, such as traffic and noise.

Respond promptly to any complaints.

Take care to respect the community.

# Notice of work at the A43, site investigations and compound set up

[www.hs2.org.uk](http://www.hs2.org.uk)

Notification

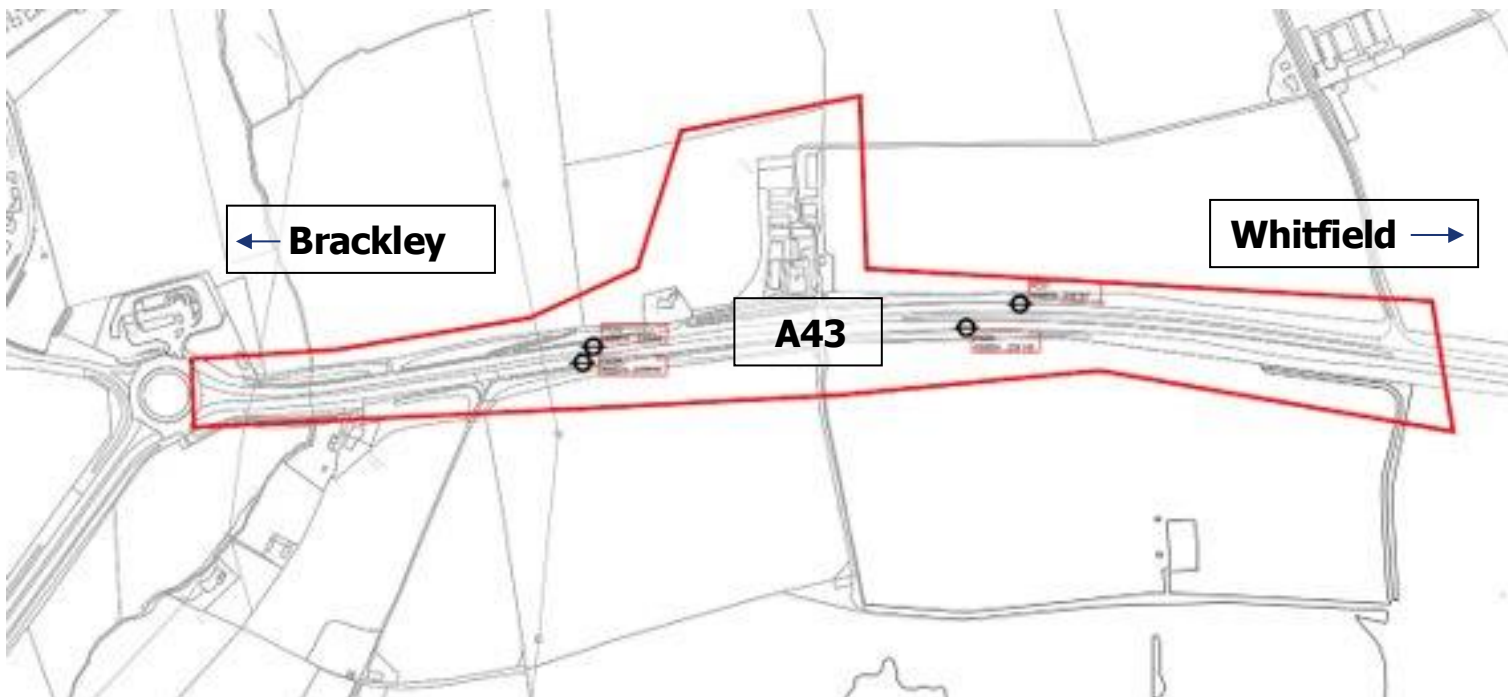


## What does the work involve?

### Ground and site investigations

We will carry out ground investigation (GI) and site investigation (SI) surveys throughout March and April. These activities will give us more information about the type, strength and details of the land where the compound and the new railway will be built. To understand the ground conditions, we need to collect a variety of test samples from carefully selected areas. This will include sites on the north and south of the A43, between the Northampton Road Brackley roundabout (BP roundabout) and Radstone Road, Whitfield, and also in Whitfield Racecourse, south of the A43. The GI work at Whitfield Racecourse will take place during the day. Deliveries of GI materials and work on the A43 carriageway, will take place overnight.

Outline of the work area at the A43 below:



Contact our HS2 Helpdesk team on **08081 434 434**

# Notice of work at the A43, site investigations and compound set up

[www.hs2.org.uk](http://www.hs2.org.uk)

**Map showing Whitfield Racecourse GI location**



## **Southbound lane closures**

To complete our GI and SI works safely on the southbound carriageway of the A43, and for GI deliveries to Whitfield Racecourse, we will need temporary traffic management in place.

There will be night-time lane closures between March and April, 20:00 to 06:00am. Access will be maintained along the A43 southbound during these works, including access to Whitfield village.

We are working alongside Fusion, who are also carrying out activities on the A43 and combining our traffic management and work where possible, to minimise disruption.

Contact our HS2 Helpdesk team on **08081 434 434**

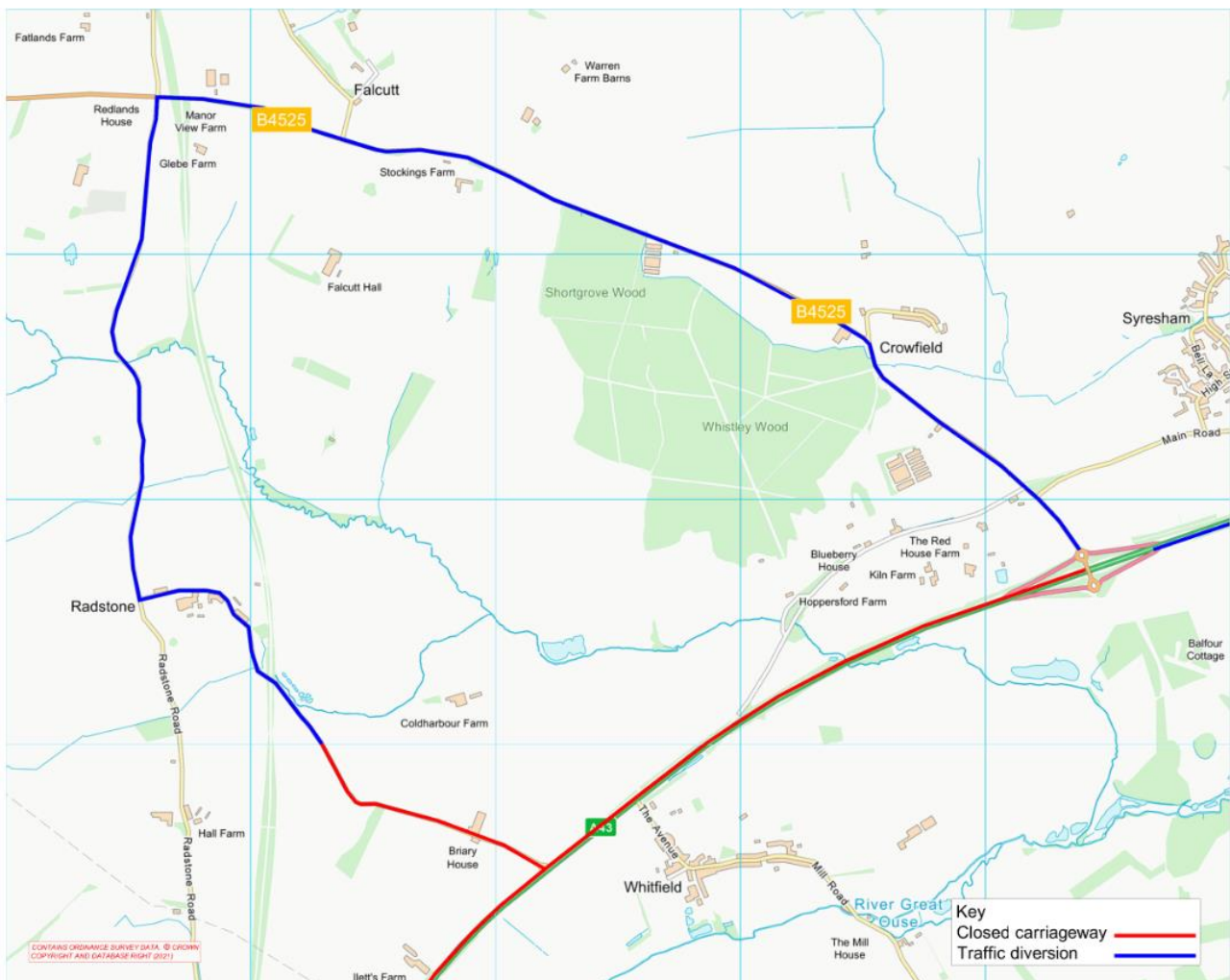
# Notice of work at the A43, site investigations and compound set up

[www.hs2.org.uk](http://www.hs2.org.uk)

## Northbound closures

To carry out our work on the northbound carriageway, we will need to close the A43 between the Northampton Road Brackley roundabout (BP roundabout) and the Syresham Junction, Welsh Road, overnight from 20:00 to 6.00am. The closure will be in place from Tuesday 6th April to Monday 19th April. There will be no access from the Radstone Road, Whitfield, onto the A43 during these night-time closures and a diversion will be in place.

A map showing the northbound closure and the local Radstone diversion is shown below. A larger map, showing the full diversion for users travelling longer distances on the A43 is available on [Commonplace](#). This full diversion is along the A421 and A5.



Contact our HS2 Helpdesk team on **08081 434 434**



# Notice of work at the A43, site investigations and compound set up

[www.hs2.org.uk](http://www.hs2.org.uk)

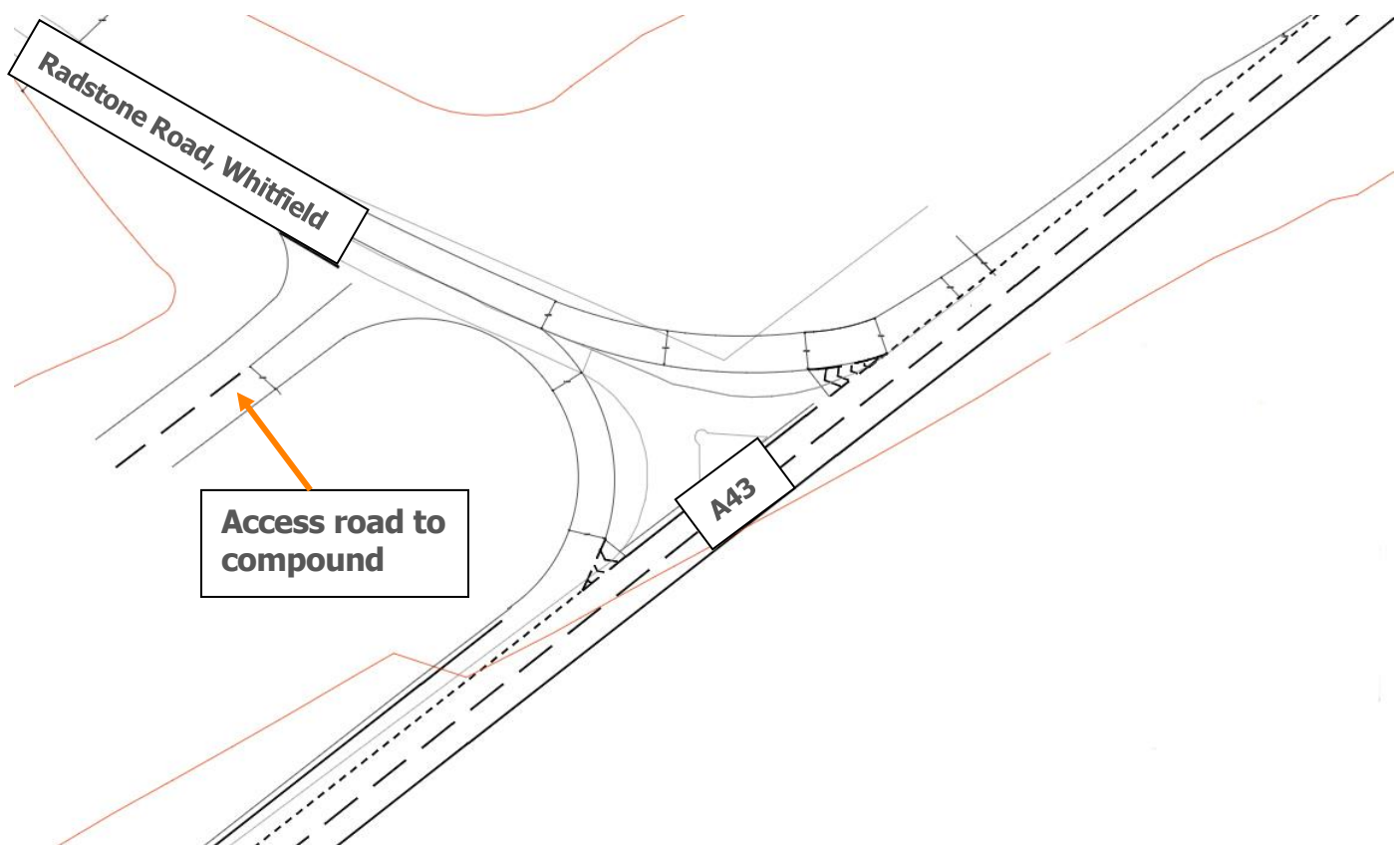
Notification



## Creation of an access off Radstone Road, Whitfield

Following our site investigation work, we will then create an access for our HGVs to enter the compound site safely. This will involve setting up a temporary compound to build acceleration and deceleration lanes on the A43 and an access of the Radstone Road, Whitfield to the construction compound site.

Indicative access layout:



There will need to be local traffic management to create this access and we will provide more information on these specific works later in the year.

Contact our HS2 Helpdesk team on **08081 434 434**

# Notice of work at the A43, site investigations and compound set up

[www.hs2.org.uk](http://www.hs2.org.uk)

Notification



## Compound Set Up

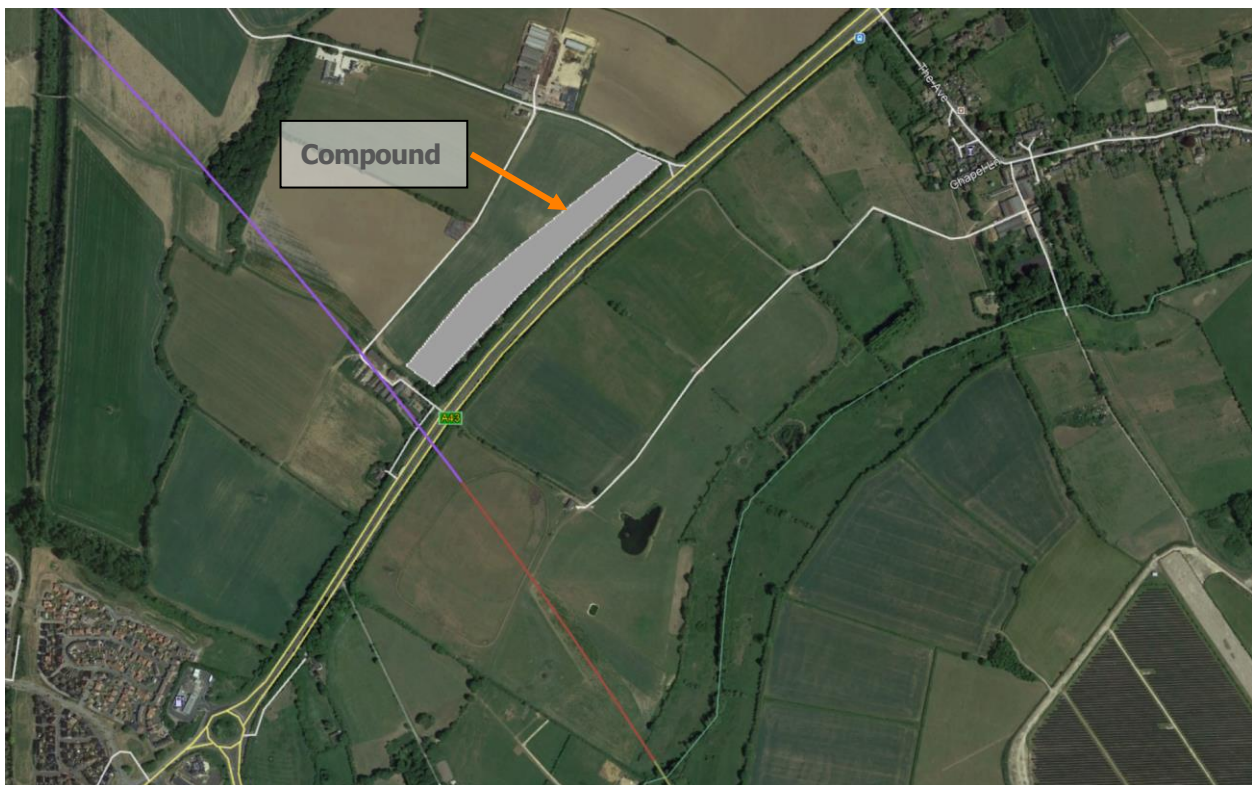
Once the access off Radstone Road, Whitfield has been constructed, we will build the compound. A construction compound is a local hub for the construction works in the area. It provides:

- Office and welfare facilities
- Storage of materials and equipment to be distributed on sites in the area – this is plant machinery and aggregate
- Car parking for workers

All of the buildings on site will be temporary and the site will have safety fencing and 24hr security for the duration of the works.

The compound north of the A43 is required to manage construction activities in the area, including the construction of the new A43 overbridge. This will allow the A43 to pass over the HS2 route once complete. We will need to temporarily divert the A43 to build this new overbridge, and we will provide more detail in this later in the year.

Indicative location of the compound below:



Contact our HS2 Helpdesk team on **08081 434 434**

# What else is happening in your area?

[www.hs2.org.uk](http://www.hs2.org.uk)

## Contact our new HS2 Helpdesk team

Our new Helpdesk team is based in our Head Office in Birmingham. This is so that we can provide you with the best service possible. Our team is here to listen and respond to your enquiry, complaint or feedback to help us be a good neighbour.

You can contact our Helpdesk team all day, every day of the year on:

Freephone: **08081 434 434**

Minicom: **08081 456 472**

Email: [hs2enquiries@hs2.org.uk](mailto:hs2enquiries@hs2.org.uk)

## Keep up-to-date with your local community website

To find out more about what's happening in your area and receive regular email updates, you can sign up to our local community websites at: [www.hs2inyourarea.co.uk](http://www.hs2inyourarea.co.uk).

## About our Community and Business Funds

We are offering two funds that are available to local communities and businesses between the West Midlands and London, to help with the disruption caused by our construction work. These are the Community and Environment Fund (CEF) and the Business and Local Economy Fund (BLEF).

The CEF is designed to give communities the opportunity to share in the benefits of HS2. It is an allocated fund that communities are able to apply for, to help to support local projects that aim to improve their local area.

The BLEF is designed to support local economies that may be disrupted by the construction of HS2. BLEF grants are for local business support organisations and local authorities to help maintain business activity in local communities.

For more information about each of these funds, including how to apply, please visit: <https://www.groundwork.org.uk/hs2funds>



# Keeping you informed

We are committed to keeping you informed about work on HS2. This includes ensuring you know what to expect and when to expect it, as well as how we can help.

## Residents' Charter and Commissioner

The Residents' Charter is our promise to communicate as clearly as we possibly can with people who live along or near the HS2 route.

[www.gov.uk/government/publications/hs2-residents-charter](http://www.gov.uk/government/publications/hs2-residents-charter)

We also have an independent Residents' Commissioner whose job is to make sure we keep to the promises we make in the Charter and to keep it under constant review. Find reports at:

[www.gov.uk/government/collections/hs2-ltd-residents-commissioner](http://www.gov.uk/government/collections/hs2-ltd-residents-commissioner)

You can contact the Commissioner at: [residentscommissioner@hs2.org.uk](mailto:residentscommissioner@hs2.org.uk)

## Construction Commissioner

The Construction Commissioner's role is to mediate and monitor the way in which HS2 Ltd manages and responds to construction complaints. You can contact the Construction Commissioner by emailing:

[complaints@hs2-cc.org.uk](mailto:complaints@hs2-cc.org.uk)

## Property and compensation

You can find out all about HS2 and properties along the line of route by visiting:

[www.gov.uk/government/collections/hs2-property](http://www.gov.uk/government/collections/hs2-property)

Find out if you're eligible for compensation at:

[www.gov.uk/claim-compensation-if-affected-by-hs2](http://www.gov.uk/claim-compensation-if-affected-by-hs2)

## Holding us to account

If you are unhappy for any reason you can make a complaint by contacting our HS2 Helpdesk team. For more details on our complaints process, please visit our website:

[www.hs2.org.uk/how-to-complain](http://www.hs2.org.uk/how-to-complain)

## Contact Us

Contact our HS2 Helpdesk team all day, every day of the year on:



Freephone **08081 434 434**



Minicom **08081 456 472**



Email **[hs2enquiries@hs2.org.uk](mailto:hs2enquiries@hs2.org.uk)**

Write to:

**FREEPOST**

**HS2 Community Engagement**

Website **[www.hs2.org.uk](http://www.hs2.org.uk)**

To keep up to date with what is happening in your local area, visit:

**[www.hs2inyourarea.co.uk](http://www.hs2inyourarea.co.uk)**

**Please contact us if you'd like a free copy of this document in large print, Braille, audio or easy read. You can also contact us for help and information in a different language.**

HS2 Ltd is committed to protecting personal information. If you wish to know more about how we use your personal information please see our Privacy Notice

<https://www.gov.uk/government/publications/high-speed-two-ltd-privacy-notice>

**Reference number: 1MC12-EKF-IN-NTE-CS09-000004**

**HS2-EW-EK-Ph1-Ar-Ce-C1-Prog-works-25-23/02/2021**

High Speed Two (HS2) Limited, registered in England and Wales.

Registered office: Two Snowhill, Snow Hill Queensway, Birmingham B4 6GA.

Company registration number: 06791686. VAT registration number: 888 8512 56.