

Contact our HS2 Helpdesk team on **08081 434 434**

HS2 Piling works

Hillingdon | November 2020

High Speed Two (HS2) is the new high speed railway for Britain.

We will soon start our piling works and wanted to provide information on the different methods of piling we will use in the area.

Piling works will begin in **late November** throughout **Spring 2021** to make way for the foundations of:

- the new road bridge at Harvil Road (over the Chiltern Line and the new high speed railway)
- the new rail bridge at Breakspear Road South
- the reconstruction of the footpath bridge over the river Pinn
- the new railway embankment at West Ruislip

A **map** has been included to show the key piling locations and dates of work.

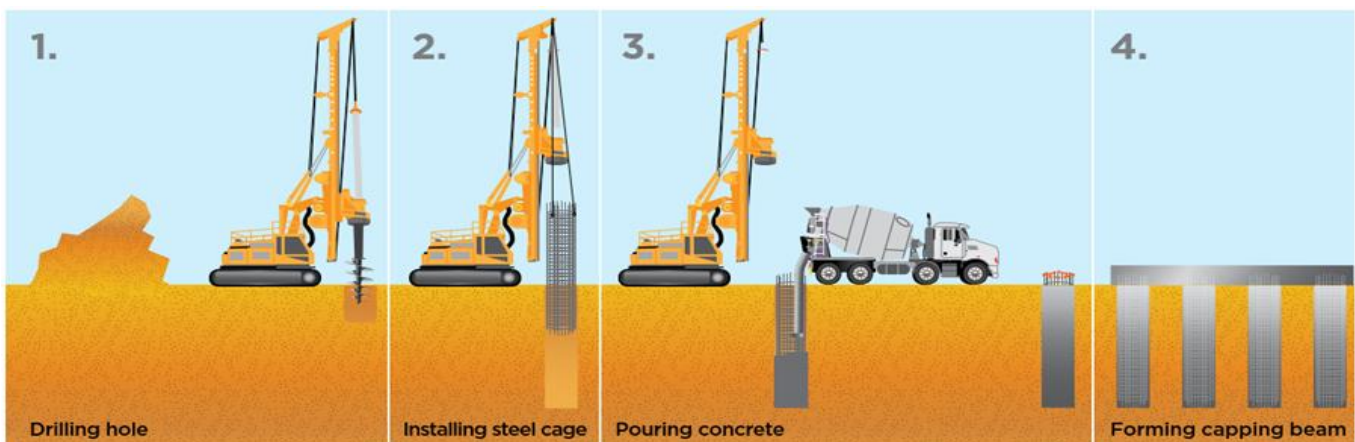
Piling description

Piling work is crucial to the stability of the ground and to distribute the weight of a constructed structure evenly. It is an effective approach to combating corrosion and is proven to significantly improve the life expectancy of a structure. Several different types of piles will be installed, such as bored piling and sheet piling.

Bored piling

Bored piles are a commonly used form of foundation that provide support for structures, transferring their load to layers of soil or rock that have sufficient bearing capacity and suitable settlement characteristics.

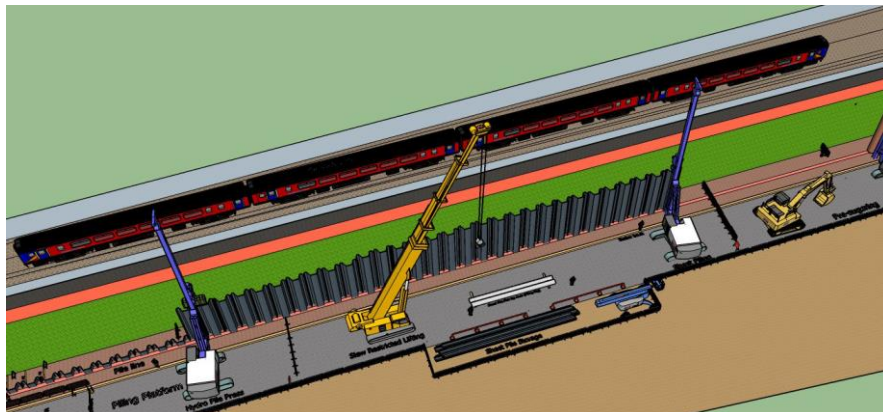
Bored piles require the removal of earth to form a hole for a reinforced concrete pile which is poured in situ. Bored piles are drilled using buckets and driven through rotary boring (twisting in place).



Sheet piling

Sheet piles are commonly used for retaining walls, land reclamation and underground structures. These are sections of sheet metal with interlocking edges that are driven into the ground to provide earth retention and excavation support.

Sheet piles are installed in sequence along the planned excavation perimeter. When arranged together, they form a wall for permanent or temporary earth support, along with anchors to provide extra lateral support.



Construction work

Hours of work

Standard construction hours are Monday to Friday from 8am to 6pm and Saturday from 8am to 1pm.

Specific work activity may occur outside of these hours, including concrete works and works along the Chiltern Line during rail possession. When work is due to occur outside of standard hours, we will notify you.

Noise, vibration and dust

To reduce the impacts from piling works, noise generating activities are scheduled after 8am during standard construction hours where possible.

Noise and vibration monitoring will be conducted to ensure works are within project approval limits.

Sheet piles will be pressed into position. In the event that we find hard ground or obstacles, a vibro-hammer will be used for a short period of time to disturb the ground and drive the sheets through the hard areas.

Water carts will be in used to reduce the amount of dust generated by construction activities.

Local roads

There will be some temporary traffic changes to ensure the work zone is safe. Lane closures will be in place and may affect travel times on Harvil Road.

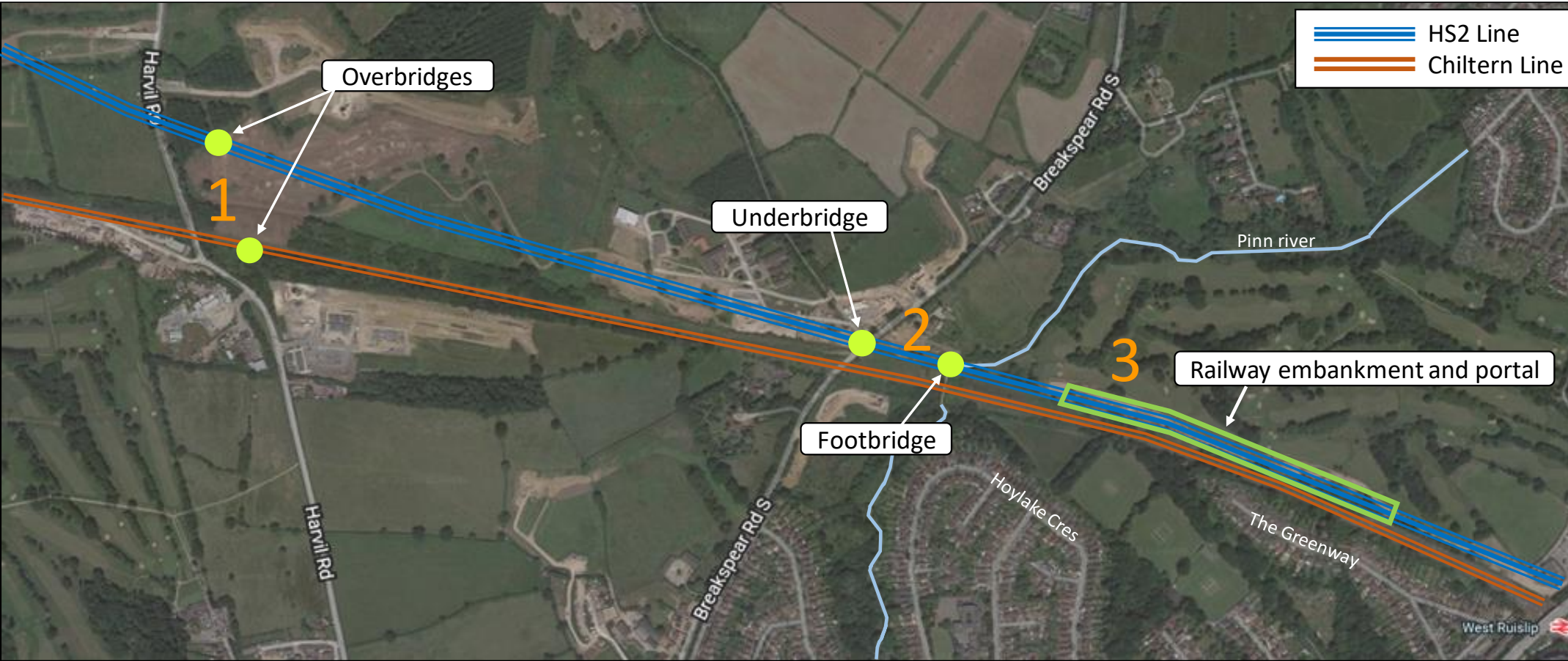
There will be no changes to any of the other roads as you travel through the rest of the area. However, there will be heavy vehicle movements and deliveries of equipment to the work sites prior the beginning of the piling activities.

Large machines, workers and heavy construction machinery will be visible in the area during these works.

Equipment and machinery used will include piling machines, piling rigs, trucks, excavators, cranes, lighting towers, concrete equipment and trucks, light vehicles and hand tools.

We have postponed all face-to-face engagement events and meetings and put in place a number of channels to communicate with communities, such as letters and phone calls, as well as updates and alerts from each of the local community websites. You can sign up for regular updates in your local area at www.hs2inhillington.co.uk.

Approximate Location and Starting Dates of piling work areas



- 1** Sheet piling work area for two overbridges and Harvil Road realignment
 - work will start from 30 November on Harvil Road and from 7 December on the railway
- 2** Sheet piling work area for underbridge and footbridge, work to start January 2021
- 3** Piling work area for the railway embankment and portal
 - bored piling will start from 30 November
 - sheet piling will start January 2021

Keeping you informed

We are committed to keeping you informed about work on HS2. This includes ensuring you know what to expect and when to expect it, as well as how we can help.

Residents' Charter and Commissioner

The Residents' Charter is our promise to communicate as clearly as we possibly can with people who live along or near the HS2 route.

www.gov.uk/government/publications/hs2-residents-charter

We also have an independent Residents'

Commissioner whose job is to make sure we keep to the promises we make in the Charter and to keep it under constant review. Find reports at:

www.gov.uk/government/collections/hs2-ltd-residents-commissioner

You can contact the Commissioner at:
residentscommissioner@hs2.org.uk

Construction Commissioner

The Construction Commissioner's role is to mediate and monitor the way in which HS2 Ltd manages and responds to construction complaints. You can contact the Construction Commissioner by emailing:
complaints@hs2-cc.org.uk

Property and compensation

You can find out all about HS2 and properties along the line of route by visiting:

www.gov.uk/government/collections/hs2-property

Find out if you're eligible for compensation at:

www.gov.uk/claim-compensation-if-affected-by-hs2

Holding us to account


If you are unhappy for any reason you can make a complaint by contacting our HS2 Helpdesk team. For more details on our complaints process, please visit our website:

www.hs2.org.uk/how-to-complain

Contact Us

Contact our HS2 Helpdesk team all day, every day of the year on:

 Freephone **08081 434 434**

 Minicom **08081 456 472**

 Email **HS2enquiries@hs2.org.uk**

Write to:

FREEPOST

HS2 Community Engagement

Website www.hs2.org.uk

To keep up to date with what is happening in your local area, visit:

www.HS2inyourarea.co.uk

Please contact us if you'd like a free copy of this document in large print, Braille, audio or easy read. You can also contact us for help and information in a different language.

HS2 Ltd is committed to protecting personal information. If you wish to know more about how we use your personal information, please see our Privacy Notice
<https://www.gov.uk/government/publications/high-speed-two-ltd-privacy-notice>

Reference number: HS2-EWSCS-Ph1-Ar-So-S2-Prog-works-41-13/11/2020

High Speed Two (HS2) Limited, registered in England and Wales.

Registered office: Two Snowhill, Snow Hill Queensway, Birmingham B4 6GA.

Company registration number: 06791686. VAT registration number: 888 8512 56