



Piling, Cofferdam, and Jetty works in Denham and Harefield

February 2021 | www.hs2.org.uk

High Speed Two (HS2) is the new high-speed railway for Britain. The Government's current strategy sets out that construction activity should continue as long as work can comply with Government and Public Health England guidance. We understand that some of the local community have concerns about the continuation of construction activity in the Colne Valley and along the route of the Chiltern Tunnel during the COVID-19 outbreak. We will be keeping our local websites up to date with information on our works, and the measures we have in place to maintain the safety of the community and our workforce.

You can sign up for regular updates in your local area at www.hs2inbucksandox.co.uk, www.hs2inherts.co.uk or www.hs2inhillington.co.uk.

Building the Colne Valley Viaduct

We wrote to residents in the Colne Valley in December 2020 to explain the preparations we have been undertaking for the construction of the Colne Valley Viaduct. The viaduct will be over 2 miles long and will span several lakes in the Colne Valley from Harvil Road in Hillingdon, crossing through a section of Hertfordshire, near West Hyde, to the northern embankment at Shire Lane, in Buckinghamshire.

In March 2021 we will start to build the viaduct at our compound next to the A412 in Denham, Buckinghamshire. We will work across the Colne Valley from north to south, using our system of internal haul roads, works compounds and signalized road crossings to keep HGVs off local road network wherever possible.

We will keep residents and businesses updated on the progress we are making, providing notification of any impacts that our work may have. The information in this notification is intended to give communities in the Colne Valley an overview of how and where the main construction activity will take place over the next 2-3 years.

If you have a question about HS2 or our works, please contact our HS2 Helpdesk team on 08081 434 434

Duration of works

March 2021 to 2023

We are seeking permission for extended hours for earthworks, piling, concrete pours, finishing works, and machinery set up:

Working hours Monday to Saturday 8am – 10pm

Some other, less noisy works will also take place outside these hours.

What to expect

Additional traffic at managed road crossings.

Noise from machinery used for the works.

Works lighting during extended hours.

What we will do

Manage impact of traffic and noise, reducing disruption where we can.

Local works updates.

Call our HS2 Helpdesk team on **08081 434 434**

Piling, Cofferdam, and Jetty works in Denham and Harefield

Notification



www.hs2.org.uk

What works have been taking place in the Colne Valley?

Since the summer 2020 we have been carrying out the temporary works required to support the construction of the viaduct. These works have included:

- Construction compound set up, building of an internal haul road, and utilities works
- Building signalised crossing points at Harvil Road / Dews Lane, Moorhall Road, A412 N.Orbital Way
- Ground investigations and Load Test Piling across the Colne Valley to inform permanent works.

What works will be taking place?

To build the Colne Valley Viaduct we will build 45 piers over land, and 11 piers over the lakes. We need to create strong pier foundations (piles).

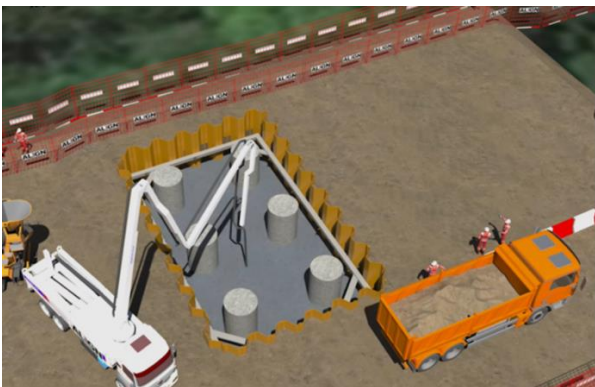


Fig.1 Piling and cofferdam for ground piers

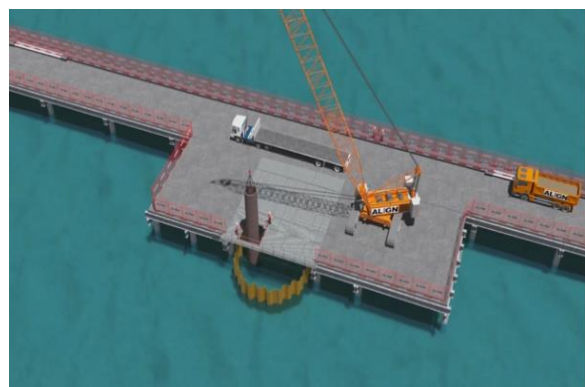


Fig. 2 Jetty platform and piling for lake piers

Piling for pier foundations

We will start our programme of rotary piling for the ground and lake piers in March 2021 on land adjacent to Denham Water Ski Club. Fig1 above shows how the piles will be installed with a sheet pile cofferdam around them to prevent water entering. Cranes and piling rigs will be used and concrete for the bored piles will be delivered using our internal haul road to reduce HGVs on local roads.

For pier locations above the lakes, we need to create a jetty - a temporary bridge structure - shown in Fig 2 above. To do this we will drive and vibrate piles into the ground and place decking on top to form a working platform. This enables rotary piles to be bored into the ground under the lake. These piling works will create noise and are likely to be noticeable in the local area.

Piling, Cofferdam, and Jetty works in Denham and Harefield

Notification



www.hs2.org.uk

How may this affect you

If you live near to one of the pier locations shown on the attached map, it is likely that the piling will produce increased noise and vibrations which you may hear and feel in your home. These works may be audible for several months in the local area, but as we complete works on one pier and move to the next location, the noise levels will increase and decrease accordingly.

There are strict arrangements governing the noise and vibration our work causes, and these arrangements are subject to consent by the local authority. We will be employing measures at each of our sites to reduce and mitigate the noisiest activities. We will also be undertaking extensive noise and vibration measurements throughout the works to ensure we are meeting the project's commitments on construction.

Concrete pours for the pier structures, earthworks, machinery set up and some limited piling will need to be carried out during extended hours. At these times there will be a need to use local lighting on the worksite to ensure this can be completed safely. We will review each activity to ensure that lighting is employed as sensitively as possible, however, the working compounds, haul road and sites will be illuminated in the evenings at these times.

Hours of work

Care has been taken to plan the viaduct construction in consultation with the local authority to avoid the highest noise generating activities taking place during the most sensitive periods for residents.

Most of the construction, including piling activities, will be completed during the extended working hours: 8am to 10pm Mondays to Saturdays. Contractors may be onsite for one hour's start up and one hour's shut down outside of these times.

In order to complete concrete pouring within the planned timeframe we need to complete some preparatory and support work at night and over weekends. These limited and less noisy activities enable the main concreting works to start early in the weekday daytime. This means the main noise producing piling works can be completed during day and evening hours.

We are working hard to ensure that any impacts on residents are kept to a minimum. We will build the viaduct in ways that reduce noise as much as we reasonably can, employing Best Practicable Means to (BPM) to limit construction activity taking place at night, and to reduce the noise created by all works.

If you have any concerns, we can arrange for one of our specialists to talk to you.

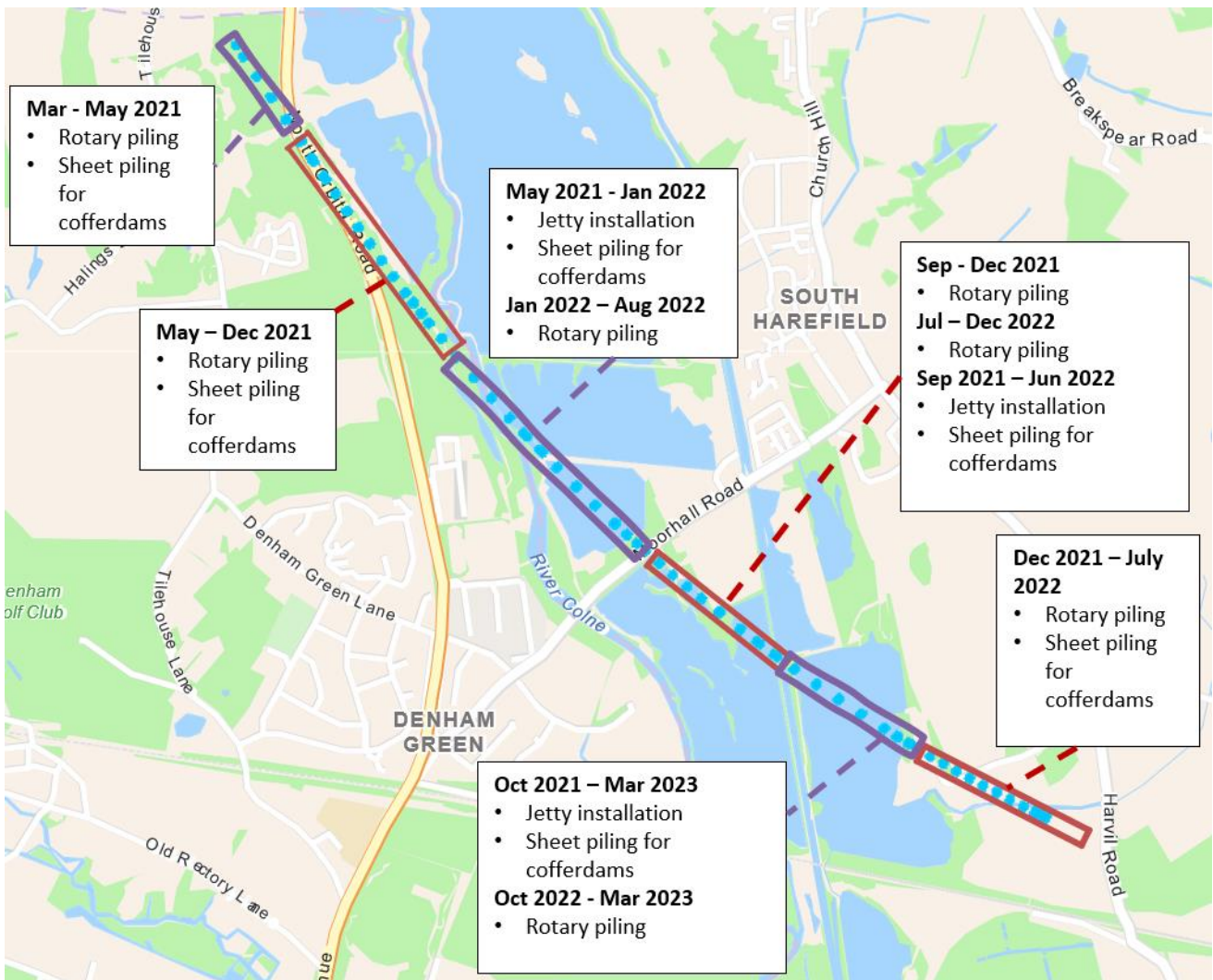
Piling, Cofferdam, and Jetty works in Denham and Harefield



www.hs2.org.uk

Map of viaduct pier positions and expected dates of piling activity 2021-23

The map below shows the expected dates of piling activities at sites across the Colne Valley. The blue circles show the location of every pier we need to construct to build the viaduct.



Piling, Cofferdam, and Jetty works in Denham and Harefield

www.hs2.org.uk

Traffic management and haul road crossing points

As part of our commitment to reducing the numbers of our HGVs on local roads we are building an internal haul road. There are three key intersections with the public highway where we are building signalized junctions. Until these crossings are completed, we will maintain temporary traffic management at the following locations:

A412 North Orbital at Denham Water Ski Club

Two-way lights will continue to be in place until the end of June 2021 and will be followed by the operation of permanent traffic lights to manage the haul road crossing with the A412.

Harvil Road / Dews Lane junction

Three-way lights will continue to be in place until the end of March 2021 and will be followed by the operation of permanent traffic lights for the control of the junction.

Moorhall Road

Two-way lights will continue to be in place until the end of April 2021 and will be followed by the operation of permanent traffic lights to manage the haul road crossing with Moorhall Road.

Protecting your water

We need to ensure we do not affect the local water supply. We are legally obliged to reduce any risks of this happening. Working closely with Affinity Water and the Environment Agency, we have developed an approach to constructing the piers which will mitigate any risk. Our programme of test piling at Denham Water Ski Club and Harvil Road 2020-21 has helped us to develop a construction approach that is tailored to local conditions. We have carried out extensive Ground Investigations to understand the conditions at every pier location (including the ground under the lakes).

Ground Investigations across the Colne Valley will continue over the next few months as we continue to survey the area in and around the viaduct piers, including the lakes.

Community information events

In March 2021 we will be launching an online exhibition to share our final design proposals for the South Portal of the Chiltern Tunnel and the landscape design for the western slopes.

This will be accompanied by two online webinars on 23rd and 25th March.

We will also be holding another Colne Valley Construction Update webinar in Spring 2021. More details will be available shortly at the local websites www.hs2inbucksandox.co.uk, www.hs2inhillingdon.co.uk and www.hs2inherts.co.uk.

Keeping you informed

We are committed to keeping you informed about work on HS2. This includes ensuring you know what to expect and when to expect it, as well as how we can help.

Residents' Charter and Commissioner

The Residents' Charter is our promise to communicate as clearly as we possibly can with people who live along or near the HS2 route. www.gov.uk/government/publications/hs2-residents-charter

We also have an independent Residents' Commissioner whose job is to make sure we keep to the promises we make in the Charter and to keep it under constant review. Find reports at: www.gov.uk/government/collections/hs2-ltd-residents-commissioner

You can contact the Commissioner at: residentscommissioner@hs2.org.uk

Construction Commissioner

The Construction Commissioner's role is to mediate and monitor the way in which HS2 Ltd manages and responds to construction complaints. You can contact the Construction Commissioner by emailing: complaints@hs2-cc.org.uk

Property and compensation

You can find out all about HS2 and properties along the line of route by visiting: www.gov.uk/government/collections/hs2-property
Find out if you're eligible for compensation at: www.gov.uk/claim-compensation-if-affected-by-hs2

Holding us to account

If you are unhappy for any reason you can make a complaint by contacting our HS2 Helpdesk team. For more details on our complaints process, please visit our website: www.hs2.org.uk/how-to-complain

Contact Us

Contact our HS2 Helpdesk team all day, every day of the year on:

 Freephone **08081 434 434**

 Minicom **08081 456 472**

 Email **hs2enquiries@hs2.org.uk**

Write to:

FREEPOST

HS2 Community Engagement

Website **www.hs2.org.uk**

To keep up to date with what is happening in your local area, visit: **www.hs2inyourarea.co.uk**

Please contact us if you'd like a free copy of this document in large print, Braille, audio or easy read. You can also contact us for help and information in a different language.

HS2 Ltd is committed to protecting personal information. If you wish to know more about how we use your personal information please see our Privacy Notice <https://www.gov.uk/government/publications/high-speed-two-ltd-privacy-notice>

Reference number: HS2-MW-Align-Ph1-Ar-Ce-C1-Prog-works-29-29/01/2021

High Speed Two (HS2) Limited, registered in England and Wales.
Registered office: Two Snowhill, Snow Hill Queensway, Birmingham B4 6GA.
Company registration number: 06791686. VAT registration number: 888 8512 56.