

# Update notice of works Denham to West Hyde

July 2020 | [www.hs2.org.uk](http://www.hs2.org.uk)

## Notification



High Speed Two (HS2) is the new high speed railway for Britain. The Government's current strategy sets out that construction activity should continue as long as work can comply with Government and Public Health England guidance. We understand that some of the local community have concerns about the continuation of construction activity in the Colne Valley and along the route of the Chiltern Tunnel during the COVID-19 outbreak. We will be keeping our local websites, up to date with information on our works, and the measures we have in place to maintain the safety of the community and our workforce.

You can sign up for regular updates in your local area at [www.hs2inbucksandox.co.uk](http://www.hs2inbucksandox.co.uk) or [www.hs2inhillington.co.uk](http://www.hs2inhillington.co.uk)

To prepare for the construction of the Colne Valley Viaduct we will be continuing our works in the area. We would like to update you on our progress so far and tell you about upcoming works in more detail.

### What works have been taking place?

We wrote to you recently about the various works which are required to construct the viaduct through the Colne Valley. We have been continuing with our programme of environmental and ground investigation surveys in this area and we anticipate these will continue over the coming months. The load test piling off Harvil Road will continue into Autumn 2020. These surveys have provided us with important information where the viaduct will be built.

**If you have a question about HS2 or our works, please contact our HS2 Helpdesk team on 08081 434 434 or email [hs2enquiries@hs2.org.uk](mailto:hs2enquiries@hs2.org.uk)**

### Duration of works

July to December 2020

Working hours Monday to Friday 8am - 6pm, and on the A412 Saturday 8am - 1pm

Occasional night works from 9pm to 5pm, including some road closures.

### What to expect

Some additional traffic on local roads

Noise from machinery used for the works

Active traffic management including temporary traffic lights from the end of July.

Managed access along footpaths.

### What we will do

Manage any impacts such as traffic and noise with the aim of reducing disruption where we can.

# Update notice of works Denham to West Hyde

Notification



[www.hs2.org.uk](http://www.hs2.org.uk)

## What other work will be taking place?

Over the coming months the following works need to take place ahead of main construction work:

- Setting up small site compounds adjacent to Moorhall Road and Denham Water Ski Club, with welfare facilities and storage for our future works
- Building temporary haul roads including the use of track matting. This matting is placed on the existing ground surface to help our vehicles move around the area
- Vegetation clearance and fencing works
- Diverting water and electric utilities ahead of building the viaduct and the haul road. These works will be completed in a way to avoid impact on local utility supplies to residents and businesses
- Continuing archaeological investigations
- Undertaking ecology works
- Further pump tests and ground investigations in the area around Moorhall Road

## Vegetation clearance and fencing works

Fusion are continuing to prepare the area, including vegetation clearance and putting up fencing. The vegetation clearance will include tree felling to create a perimeter strip, where the fencing will be installed. This will help us keep the public safe from our future construction works. Further vegetation clearance will then take place within the site to create a temporary access road. Align will also be creating two new site entrances and creating haul road crossings:

- on the A412 near Denham Water Ski Club
- on Moorhall Road

This is in preparation for the creation of a new haul road to support the construction of the Colne Valley Viaduct. Following our update to you in April an additional area of works to the north of Moorhall Road has been added. Agreed diversion routes will be clearly displayed, refer to the diversion route map overleaf.

# Update notice of works Denham to West Hyde

Notification



[www.hs2.org.uk](http://www.hs2.org.uk)

## Impact on roads and public right of way

### A412 North Orbital highway works

During this phase of the works Align will need a lane closure on the A412, near the Denham Water ski club entrance. This is to allow us to work on both sides of the highway, initially to undertake vegetation works alongside the A412 North Orbital followed by the construction of a new construction access road crossing of the A412. The lane closure will be managed by two way traffic lights. This will be required for up to four months and will operate 24 hours per day and seven days a week.

During this period of work Align will also be putting in place full A412 road closures at night during some weekends. This work is being undertaken during at night and weekends to reduce disruption and for the safety of the public. Please see the map overleaf for the location of the traffic management and the diversion route to be used during the road closure. Advance warning signage will be put out on the road ahead of the works to pre warn road users.

The weekend closures on the A412 are anticipated to be required during the period 29 August to 6 September and will be in place from 9pm to 5am.

### Moorhall Road works

To deliver all works required to the north and south of Moorhall Road additional traffic management measures will be introduced by Align. This will include a lane closure and the use of 2-way traffic lights or a contraflow system to allow traffic to continue in both directions from 27 July. These measures will be in operation 24 hours per day, 7 days per week and is expected to remain in place until October 2020.

### Overnight Moorhall Road closures

From the end of August 2020 Fusion will also need to put in place overnight full road closures of a section of Moorhall Road, as well as the lane closure outlined above. By undertaking the work at night this reduces traffic disruption and provides protection of the public. Night closures on Moorhall Road will be required for up to ten nights. The closures will commence at 9pm and finish at 5am. The night work will involve tree felling activities that cannot be achieved during daytime lane closures. We closely control noise during these works. No residential or business accesses are contained within the closed off section of Moorhall Road.

Agreed diversion routes will be clearly displayed, refer to the diversion route map overleaf.

# Update notice of works Denham to West Hyde

Notification



[www.hs2.org.uk](http://www.hs2.org.uk)

Roadside advance warning messaging signs will be in place prior and during the works to alert road users.

To ensure our work in the area of Harefield Moor Lake and Moorhall Road is carried out safely the public access path from Moorhall Road will be closed, and signs installed to show alternative access from Boyers Pit, off Moorhall Road.

Moorhall Road highway footpaths will be maintained or locally diverted whilst works are taking place. Pedestrian access will be managed by traffic marshals to ensure safety of the public. This is for the safety of the public.

All of these works are subject to the relevant consents and approvals being in place.

## How may this affect you

We will be working hard to ensure that any impacts on residents are kept to a minimum during these and all of our future works. There will be an increase in works traffic on the A412, Moorhall Road and surrounding roads during these works.

## Why are the works taking place now?

These works need to take place ahead of the main construction activity starting later this year.

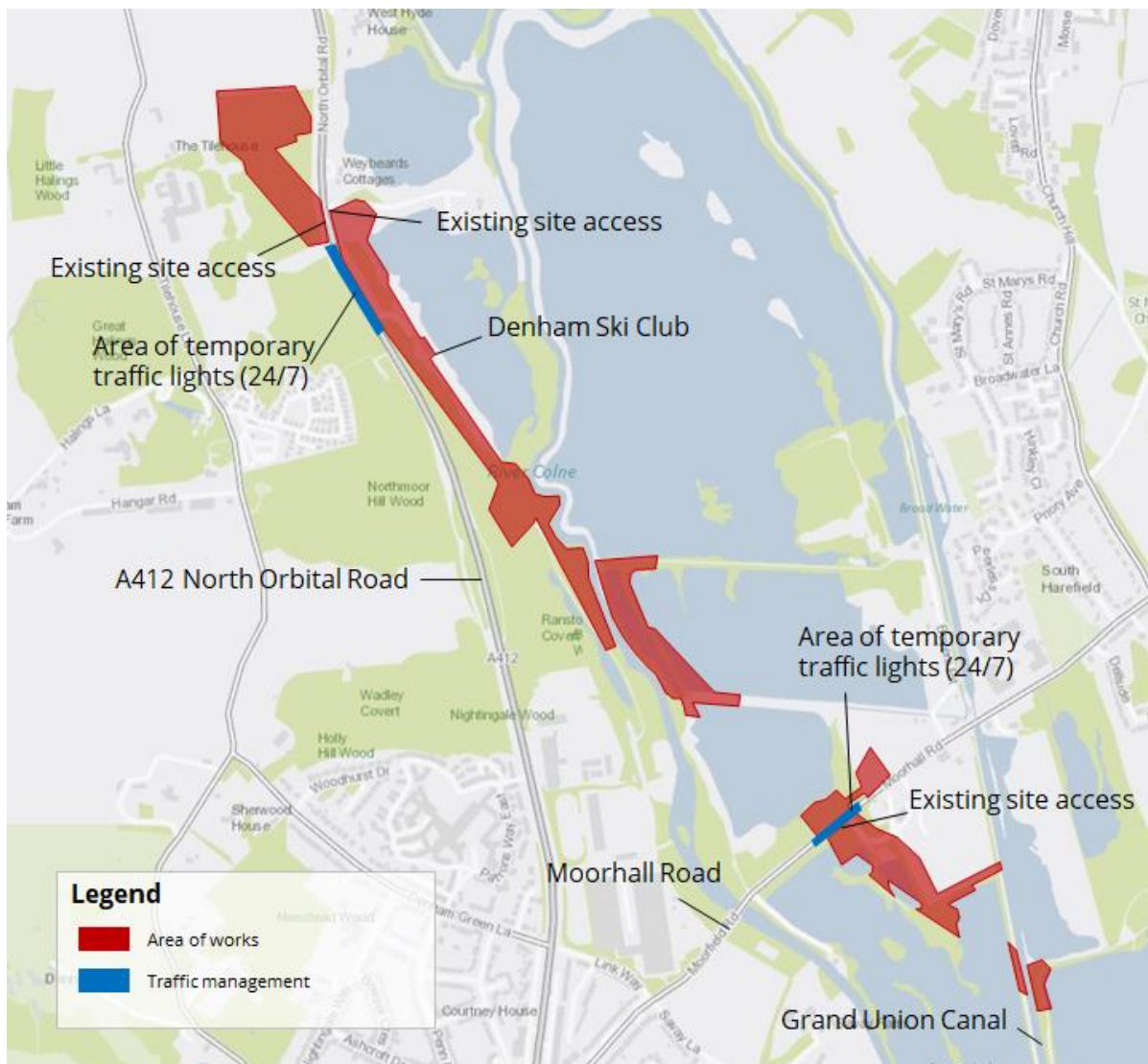
# Update notice of works Denham to West Hyde

Notification



[www.hs2.org.uk](http://www.hs2.org.uk)

Map detailing all work locations



Contact our HS2 Helpdesk team on **08081 434 434**



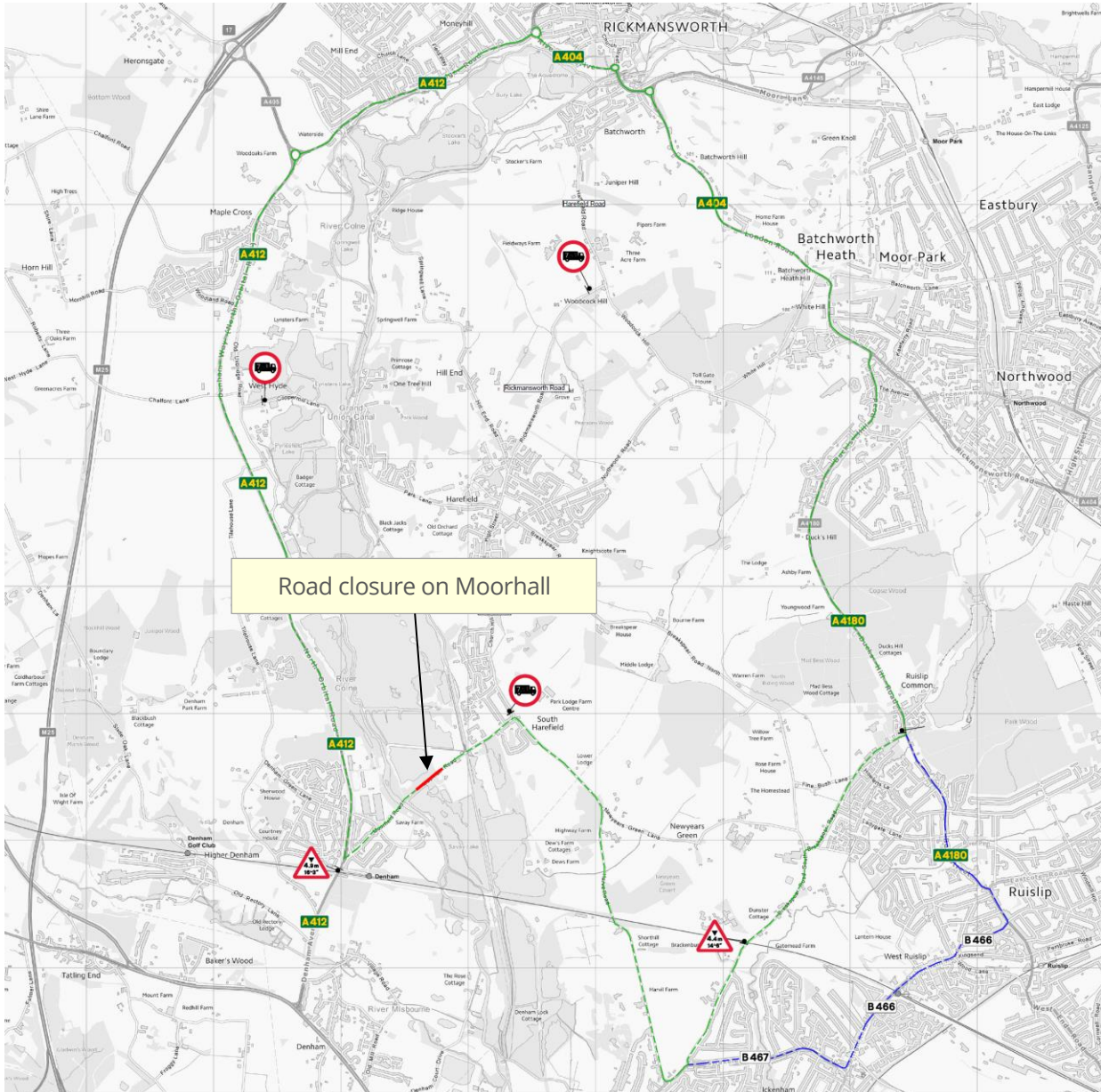
# Update notice of works Denham to West Hyde

Notification



[www.hs2.org.uk](http://www.hs2.org.uk)

Map detailing Moorhall Road diversion route during the September overnight road closures



Contact our HS2 Helpdesk team on **08081 434 434**

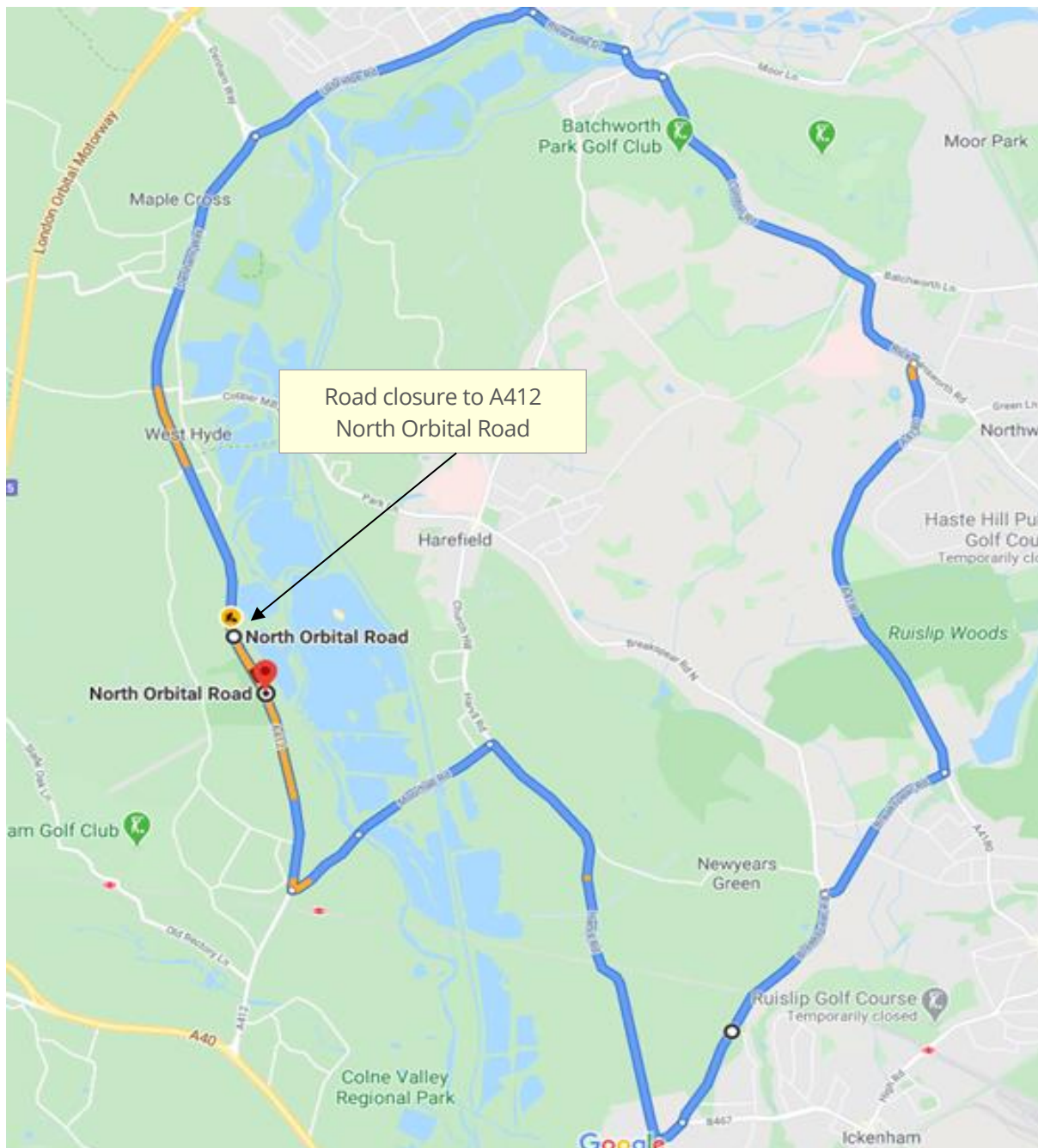
# Update notice of works Denham to West Hyde

Notification



[www.hs2.org.uk](http://www.hs2.org.uk)

Map detailing A412 North Orbital diversion route during the overnight road closures



Contact our HS2 Helpdesk team on **08081 434 434**

# Keeping you informed

We are committed to keeping you informed about work on HS2. This includes ensuring you know what to expect and when to expect it, as well as how we can help.

## Residents' Charter and Commissioner

The Residents' Charter is our promise to communicate as clearly as we possibly can with people who live along or near the HS2 route. [www.gov.uk/government/publications/hs2-residents-charter](http://www.gov.uk/government/publications/hs2-residents-charter)

We also have an independent Residents' Commissioner whose job is to make sure we keep to the promises we make in the Charter and to keep it under constant review. Find reports at: [www.gov.uk/government/collections/hs2-ltd-residents-commissioner](http://www.gov.uk/government/collections/hs2-ltd-residents-commissioner)

You can contact the Commissioner at: [residentscommissioner@hs2.org.uk](mailto:residentscommissioner@hs2.org.uk)

## Construction Commissioner

The Construction Commissioner's role is to mediate and monitor the way in which HS2 Ltd manages and responds to construction complaints. You can contact the Construction Commissioner by emailing: [complaints@hs2-cc.org.uk](mailto:complaints@hs2-cc.org.uk)

## Property and compensation

You can find out all about HS2 and properties along the line of route by visiting: [www.gov.uk/government/collections/hs2-property](http://www.gov.uk/government/collections/hs2-property)  
Find out if you're eligible for compensation at: [www.gov.uk/claim-compensation-if-affected-by-hs2](http://www.gov.uk/claim-compensation-if-affected-by-hs2)

## Holding us to account

If you are unhappy for any reason you can make a complaint by contacting our HS2 Helpdesk team. For more details on our complaints process, please visit our website: [www.hs2.org.uk/how-to-complain](http://www.hs2.org.uk/how-to-complain)

## Contact Us

Contact our HS2 Helpdesk team all day, every day of the year on:

 Freephone **08081 434 434**

 Minicom **08081 456 472**

 Email **[hs2enquiries@hs2.org.uk](mailto:hs2enquiries@hs2.org.uk)**

Write to:

**FREEPOST**

**HS2 Community Engagement**

Website **[www.hs2.org.uk](http://www.hs2.org.uk)**

To keep up to date with what is happening in your local area, visit: **[www.hs2inyourarea.co.uk](http://www.hs2inyourarea.co.uk)**

**Please contact us if you'd like a free copy of this document in large print, Braille, audio or easy read. You can also contact us for help and information in a different language.**

HS2 Ltd is committed to protecting personal information. If you wish to know more about how we use your personal information please see our Privacy Notice <https://www.gov.uk/government/publications/high-speed-two-ltd-privacy-notice>

**Reference number: FUS\_AWN\_0090 HS2-EW-FUS-Ph1-Ar-Ce-C2-UT-6-09/07/2020**

High Speed Two (HS2) Limited, registered in England and Wales.  
Registered office: Two Snowhill, Snow Hill Queensway, Birmingham B4 6GA.  
Company registration number: 06791686. VAT registration number: 888 8512 56.