

Notification



Notice of works on Harvil Road

January 2021 | www.hs2.org.uk

High Speed Two (HS2) is the new high speed railway for Britain.

Being COVID-19 Compliant

We are continually reviewing the works on our construction sites in line with Government and Public Health England (PHE) advice on dealing with COVID-19. The Government's current strategy makes it clear that construction activity can continue as long as it complies with this guidance. Please be assured that only sites that can operate within the guidelines are operational. All sites will remain under constant review.

We have postponed all face-to-face engagement events and meetings and have put in place a number of channels to communicate with communities, such as letters phone calls and online events, as well as updates and alerts from each of the local community websites. You can sign up for regular updates in your local area at www.hs2inhillington.co.uk.

What we are doing

We will carry out works along Harvil Road, shown on the map overleaf:

- from 18 to 20 January we will investigate the condition of the drainage system using a small CCTV camera mounted on a small robot. Should we find a blockage we may need to flush the drainage system using a high-pressure water jet to carry out the investigation.
- on 23 and 24 January we will complete the removal of an existing dilapidated hut and we will use an excavator for the removal. The work will take place at night for safety.

How this work might affect you

Due to the location of these activities temporary traffic management will be in place. This is to ensure the surveys and the removal of the hut can be carried out safely.

If you have a question about HS2 or our works, please contact our HS2 Helpdesk team on 08081 434 434 or email hs2enquiries@hs2.org.uk

Duration of works

The activity will take place:

- from 18 to 20 January between the hours of 9.30am to 3.30pm.
- on 23 and 24 January between the hours of 8pm to 6am

We may be on site for an hour before the start and/or end of each shift.

What to expect

Temporary traffic management, excavation and surveying equipment, including a CCTV camera and a water tanker.

Our works are unlikely to cause any noise disruption and your utility services will not be affected.

What we will do

We will maintain access to your property at all times.

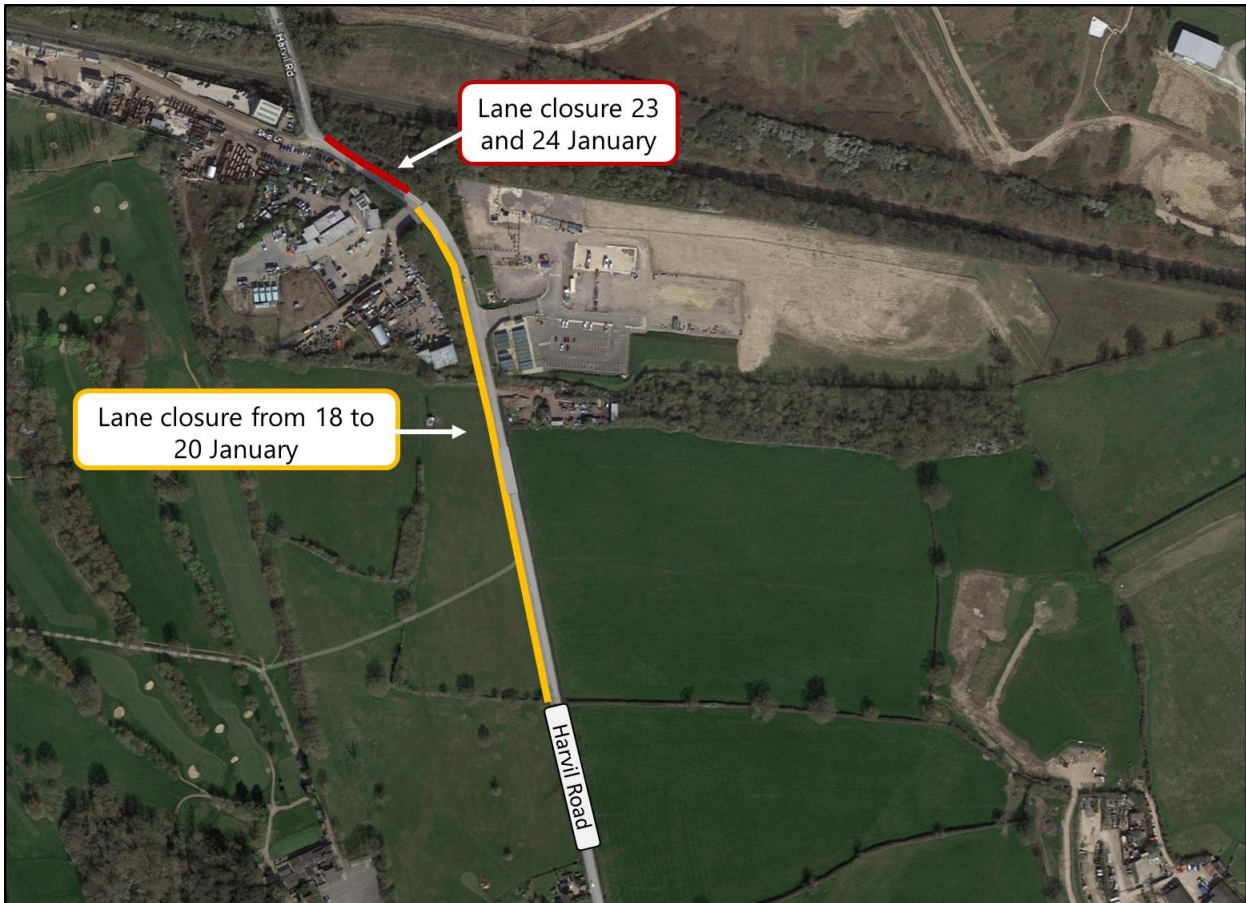
Notice of works on Harvil Road

Notification



www.hs2.org.uk

Approximate Location of utility surveys



Contact our HS2 Helpdesk team on **08081 434 434**

What else is happening in your area?

www.hs2.org.uk

Contact our new HS2 Helpdesk team

Our new Helpdesk team is based in our Head Office in Birmingham. This is so that we can provide you with the best service possible. Our team is here to listen and respond to your enquiry, complaint or feedback to help us be a good neighbour.

You can contact our Helpdesk team all day, every day of the year on:

Freephone: **08081 434 434**

Minicom: **08081 456 472**

Email: hs2enquiries@hs2.org.uk

Keep up-to-date with your local community website

To find out more about what's happening in your area and receive regular email updates, you can sign up to our local community websites at: www.hs2inyourarea.co.uk.

About our Community and Business Funds

We are offering two funds that are available to local communities and businesses between the West Midlands and London, to help with the disruption caused by our construction work. These are the Community and Environment Fund (CEF) and the Business and Local Economy Fund (BLEF).

The CEF is designed to give communities the opportunity to share in the benefits of HS2. It is an allocated fund that communities are able to apply for, to help to support local projects that aim to improve their local area.

The BLEF is designed to support local economies that may be disrupted by the construction of HS2. BLEF grants are for local business support organisations and local authorities to help maintain business activity in local communities.

For more information about each of these funds, including how to apply, please visit: <https://www.groundwork.org.uk/hs2funds>



Keeping you informed

We are committed to keeping you informed about work on HS2. This includes ensuring you know what to expect and when to expect it, as well as how we can help.

Residents' Charter and Commissioner

The Residents' Charter is our promise to communicate as clearly as we possibly can with people who live along or near the HS2 route.

www.gov.uk/government/publications/hs2-residents-charter

We also have an independent Residents' Commissioner whose job is to make sure we keep to the promises we make in the Charter and to keep it under constant review. Find reports at:

www.gov.uk/government/collections/hs2-ltd-residents-commissioner

You can contact the Commissioner at: residentscommissioner@hs2.org.uk

Construction Commissioner

The Construction Commissioner's role is to mediate and monitor the way in which HS2 Ltd manages and responds to construction complaints. You can contact the Construction Commissioner by emailing: complaints@hs2-cc.org.uk

Property and compensation

You can find out all about HS2 and properties along the line of route by visiting:

www.gov.uk/government/collections/hs2-property

Find out if you're eligible for compensation at:

www.gov.uk/claim-compensation-if-affected-by-hs2

Holding us to account

If you are unhappy for any reason you can make a complaint by contacting our HS2 Helpdesk team. For more details on our complaints process, please visit our website:

www.hs2.org.uk/how-to-complain

Contact Us

Contact our HS2 Helpdesk team all day, every day of the year on:

 Freephone **08081 434 434**

 Minicom **08081 456 472**

 Email **hs2enquiries@hs2.org.uk**

Write to:

FREEPOST

HS2 Community Engagement

Website **www.hs2.org.uk**

To keep up to date with what is happening in your local area, visit: **www.hs2inyourarea.co.uk**

Please contact us if you'd like a free copy of this document in large print, Braille, audio or easy read. You can also contact us for help and information in a different language.

HS2 Ltd is committed to protecting personal information. If you wish to know more about how we use your personal information please see our Privacy Notice <https://www.gov.uk/government/publications/high-speed-two-ltd-privacy-notice>

Reference number: HS2-MWSCS-Ph1-Ar-So-S2-OTH-14-12/06/2020

High Speed Two (HS2) Limited, registered in England and Wales.

Registered office: Two Snowhill, Snow Hill Queensway, Birmingham B4 6GA.

Company registration number: 06791686. VAT registration number: 888 8512 56.