

This document is a tool to help ensure appropriate due diligence has been taken prior to site clearance/works. Evidence is required to demonstrate all tree clearance has been suitably reviewed and can be justified.

Note: this document should be read in conjunction with the HS2 Tree Panel Terms of Reference

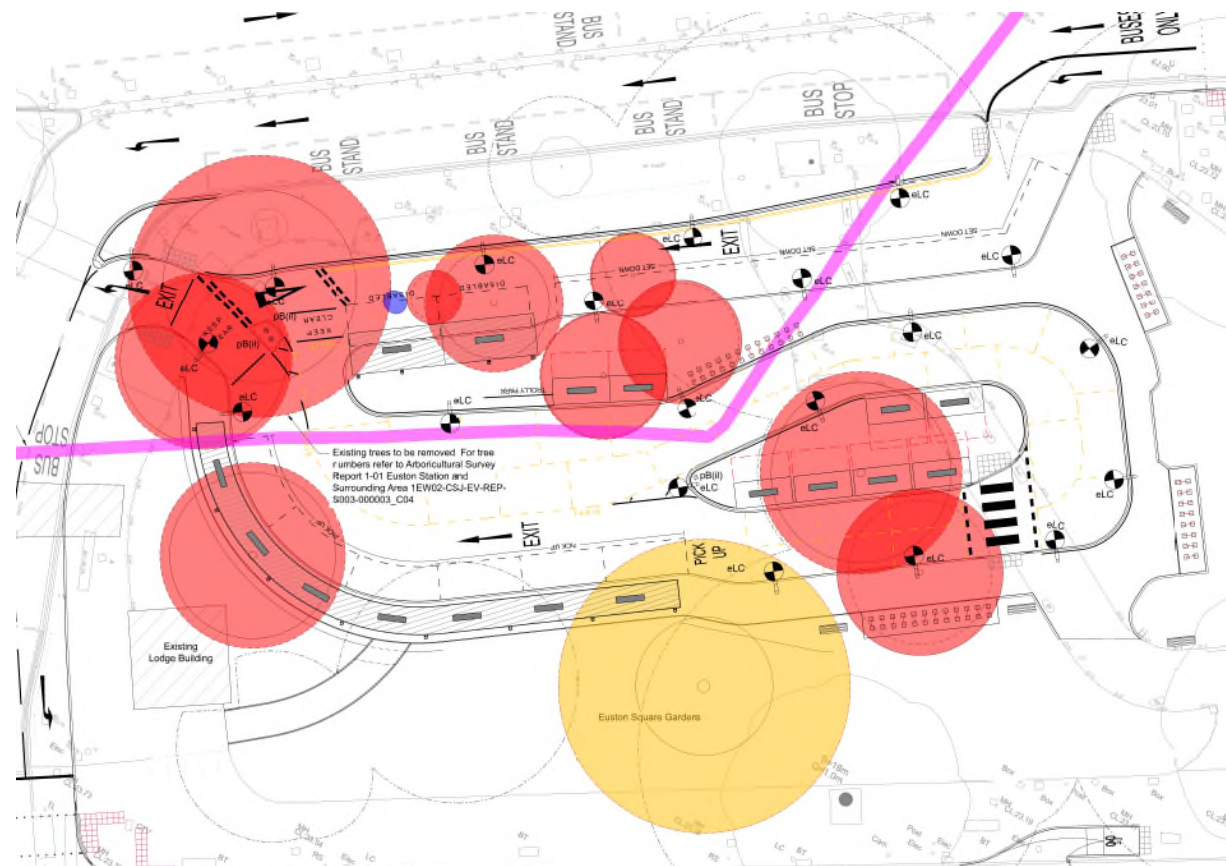
	Name	Signature		Date
Application made by:	MDJV			26/08/2020
Location (Sector/Site Name):	East Euston Square Garden			
LAA/LAP/Site Reference				
Work Package number:	N/A			
Date of Tree Panel:	28/08/2020			
Site Description:	The Interim Taxi Rank (ITR) will be situated within the Eastern Euston Square Gardens located on the corner of Euston Road and Eversholt Street.			
Reason for clearance:	<p>9 trees (6 moderate quality and 3 low quality) are to be removed to enable the construction of the ITR. In addition, 1 stump with regrowth to be removed and 1 tree of poor health recommended to be removed for public safety and to allow for new tree planting space.</p> <p>Every effort and consideration has been given to the retention of trees wherever possible through the incorporation of civil and highway design options for the carriageway and footway construction. All category A High Quality trees within the garden have been retained.</p> <p>In addition, some minor tree pruning to remove low hanging branches to ~5 trees (removal of branches below 4m in height) will be required to reduce the risk of construction works damaging the trees.</p> <p>The space within the gardens is severely constrained due to a large gas main running through the gardens, heritage assets and the geometry of the site. Following a detailed SIFT process carried out by SDSC, it became evident that to enable the Taxi rank facility, the identified trees need to be removed as they are currently causing obstructions and inhibiting the construction of the taxi rank.</p> <p>The ITR is a critical package for the construction of the HS2 Euston Station as it has programme dependencies for other packages on the overall construction critical path.</p>			
	Yes	No	N/A	Comments
Has the Stage 1 Survey been completed and logged on the Register	x			Topographical Survey and Arboriculture site survey completed.
	Yes	No	N/A	Comments

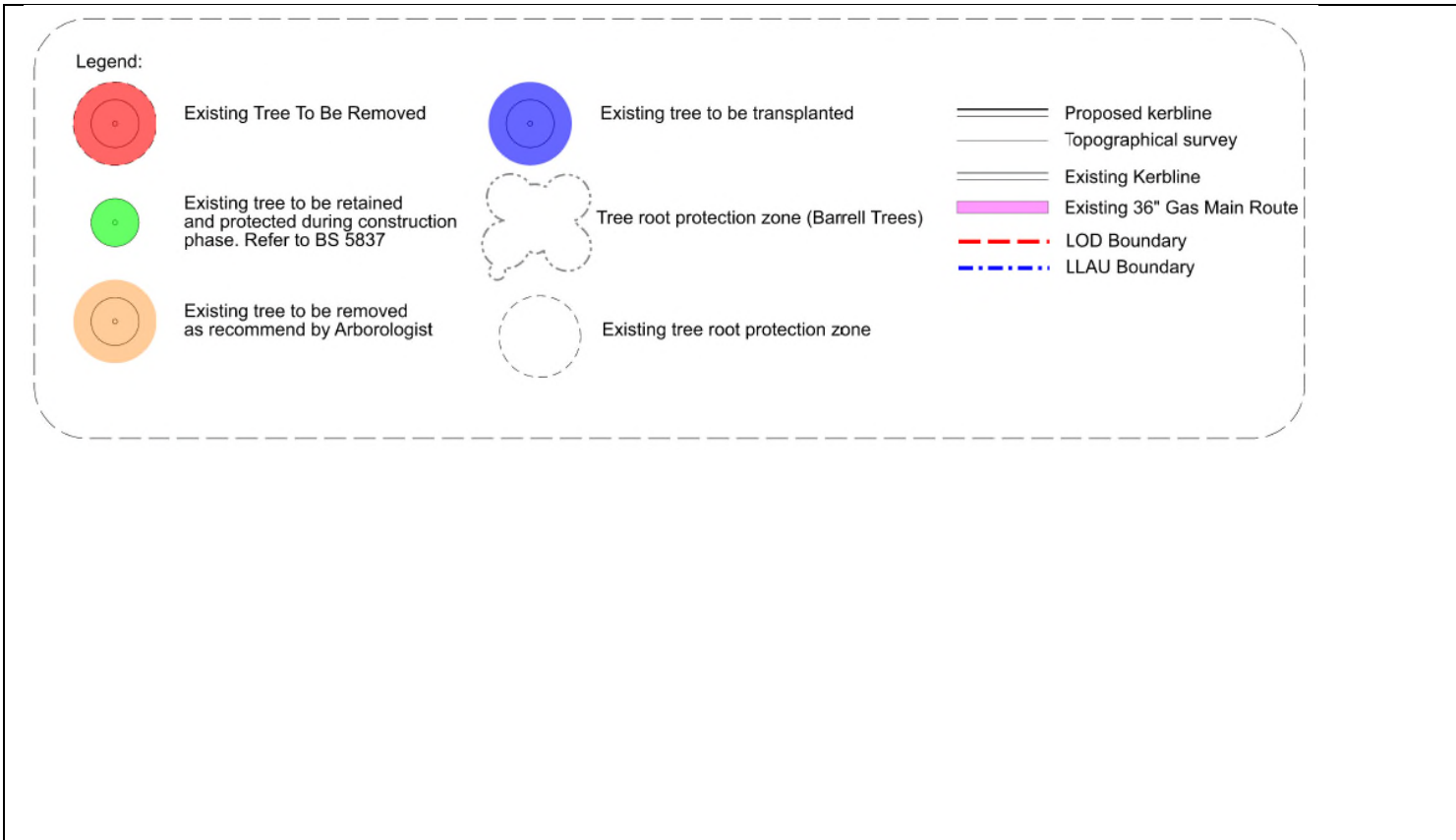
<p>Has the Stage 2 Survey been completed with retention and protection measures logged on the Register</p>	<p>x</p>			<p>Cell web detail and measures developed as part of the design.</p>
<p>Have all practicable means to negate need for works to tree been investigated? Please provide details</p>	<p>Yes. An arboricultural study has been carried out as well as a topographical survey to provide analysis for tree retention in line with design options and construction methodology.</p> <p>11 trees are to be removed within the gardens as the works for the construction of the ITR are impacting the tree trunks and roots.</p> <p>Every effort and consideration has been given to the retention of trees wherever possible through the incorporation of civil considerations such as permeable block paving, cellweb type tree protection systems to minimise excavation on root protection areas and allowing for infiltration.</p>			

Trees identified for removal and subsequent endorsement

Tree ID	Species – Common Name (scientific name)	Height (m)	Diameter (cm)@1.5 m	Maturity	RPA Radius (m)
To86	London plane	15	57.5	Mature	6.9
To95	Norway Maple	13	52.5	Maturing	6.3
T102	Tree of Heaven	20	80	Mature	9.6
T104	Red Oak	15	42.5	Maturing	5.1
T106	False Acacia	2	10	-	1.2
T108	Ash	13	37.5	Maturing	4.5
T109	Tree of Heaven	18	62.5	Maturing	7.5
T111	False Acacia	11	42.5	Mature	5.1
T113	Ash	13	37.5	Maturing	4.5
T114	False Acacia	8	27.5	Maturing	3.3
To89g	Ash	12	87.5	Mature	10.5

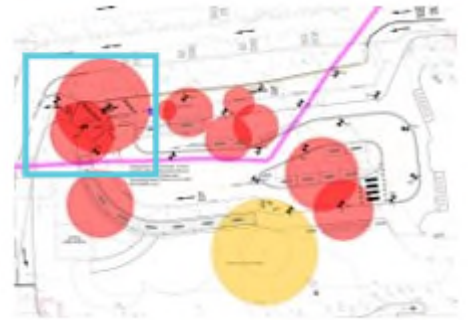
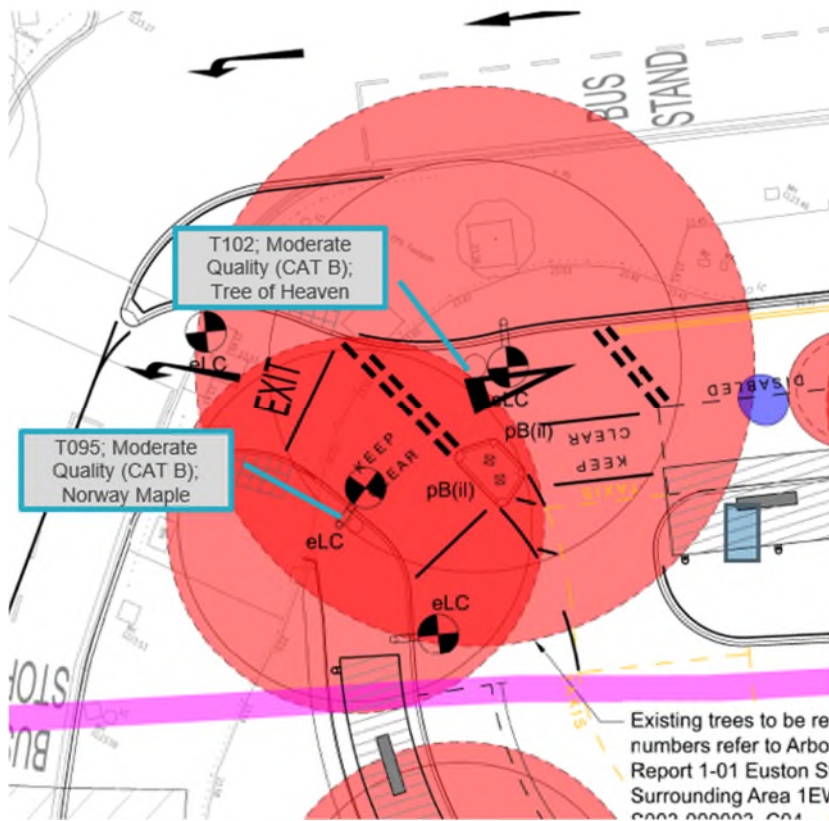
Tree Constraints Plan



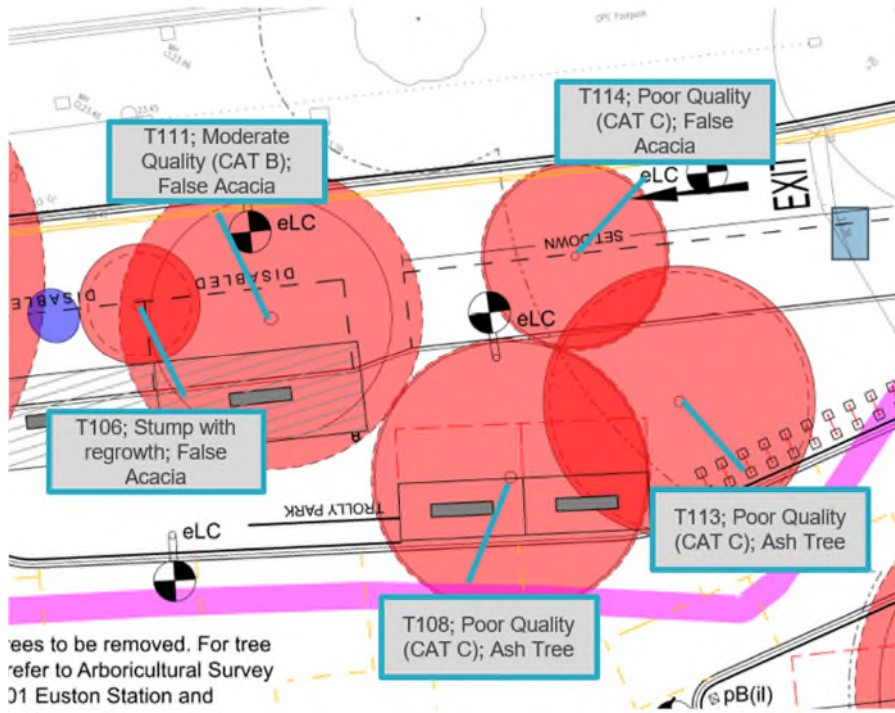


Site Sketch/ Diagram / Photos attached

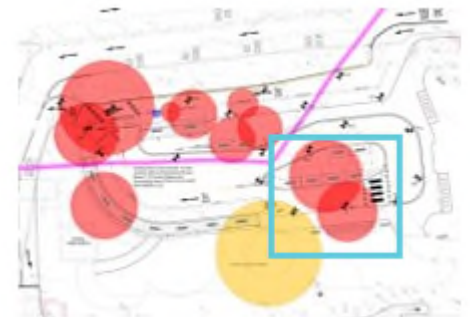
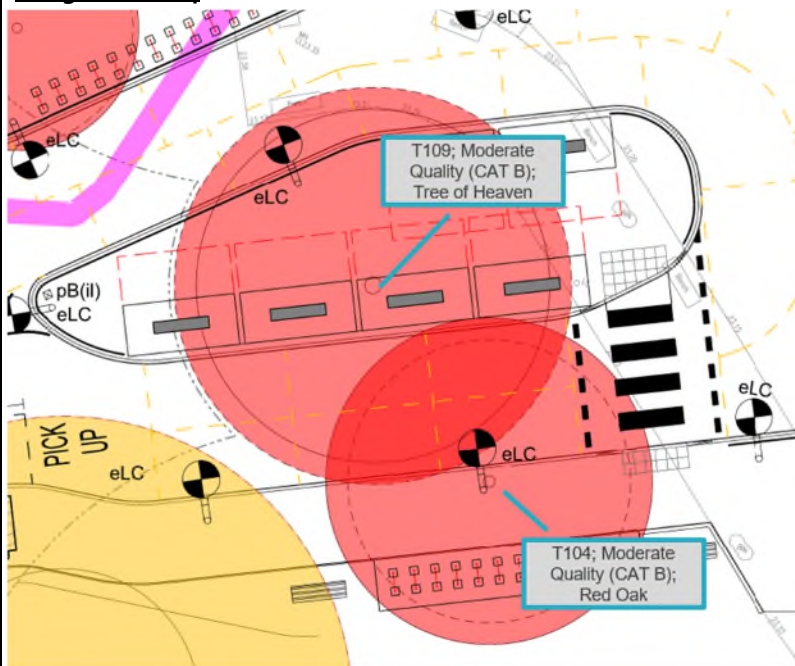
T095 and T102



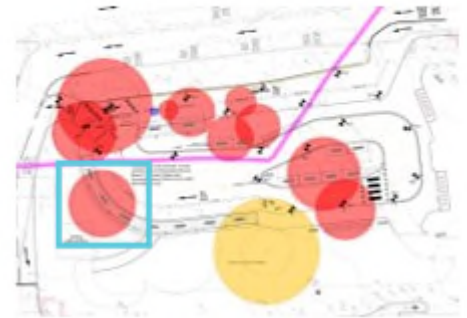
T106, T111, T114, T108 & T113



T109 and T104



To86



To89



Tree Panel Outcomes

		Proposal Endorsed/Not Endorsed:	Endorsed
Conditions	None		