

HS2

HS2 Update

Community engagement update

Schools engagement

- Rolling programme of activities for local schools
- Careers events at Maria Fidelis and Hampstead School to raise awareness of careers in construction
- STEAM activities at UCL Academy and Torriano schools
- Growing Spaces in St Mary and St Pancras School
- Re-offering our ARC Health and Safety drama programme to schools

Career pathways

- Now launching our HS2 apprenticeship and graduate schemes
- 22 apprenticeships and 9 graduate opportunities including engineering, town planning, IT, project management, town planning
- <https://www.hs2.org.uk/careers/future-talent>

Town Planning workshop at UCL

- Opportunity to share learning with 60 UCL Masters Students



Euston Works



Piazza and towers demolition

- Piazza area with retail open for public use
- Grant Thornton tower demolition complete to ground level
- One Euston Street demolished to first floor. Complete to ground level by summer



Walkden, Wolfson, Ibis and Thistle demolition

- Hotels demolition complete
- Walkden and Wolfson substantially complete
- The former Ibis area is now a concrete processing yard



St James's Gardens

- First section of archaeological excavations is complete and tent structure removed
- Utilities diversions in Cardington Street before exhumations continue
- Works will be shielded from public view

Euston Approaches



Power Signal Box (PSB)

- Partially handed over from Network Rail in February
- Hazardous material surveys carried out
- Demolition works planned in the summer



Regent's Park Estate

- Above ground structure demolitions almost complete
- Independent demolition expert review complete confirming industry best practice
- Foundation removal in phases ongoing until May

Noise Insulation

Stage of process	Number
Total number of properties in scheme	1400
Response received / interest shown	879
Surveys completed	860
Installed	<u>350</u>

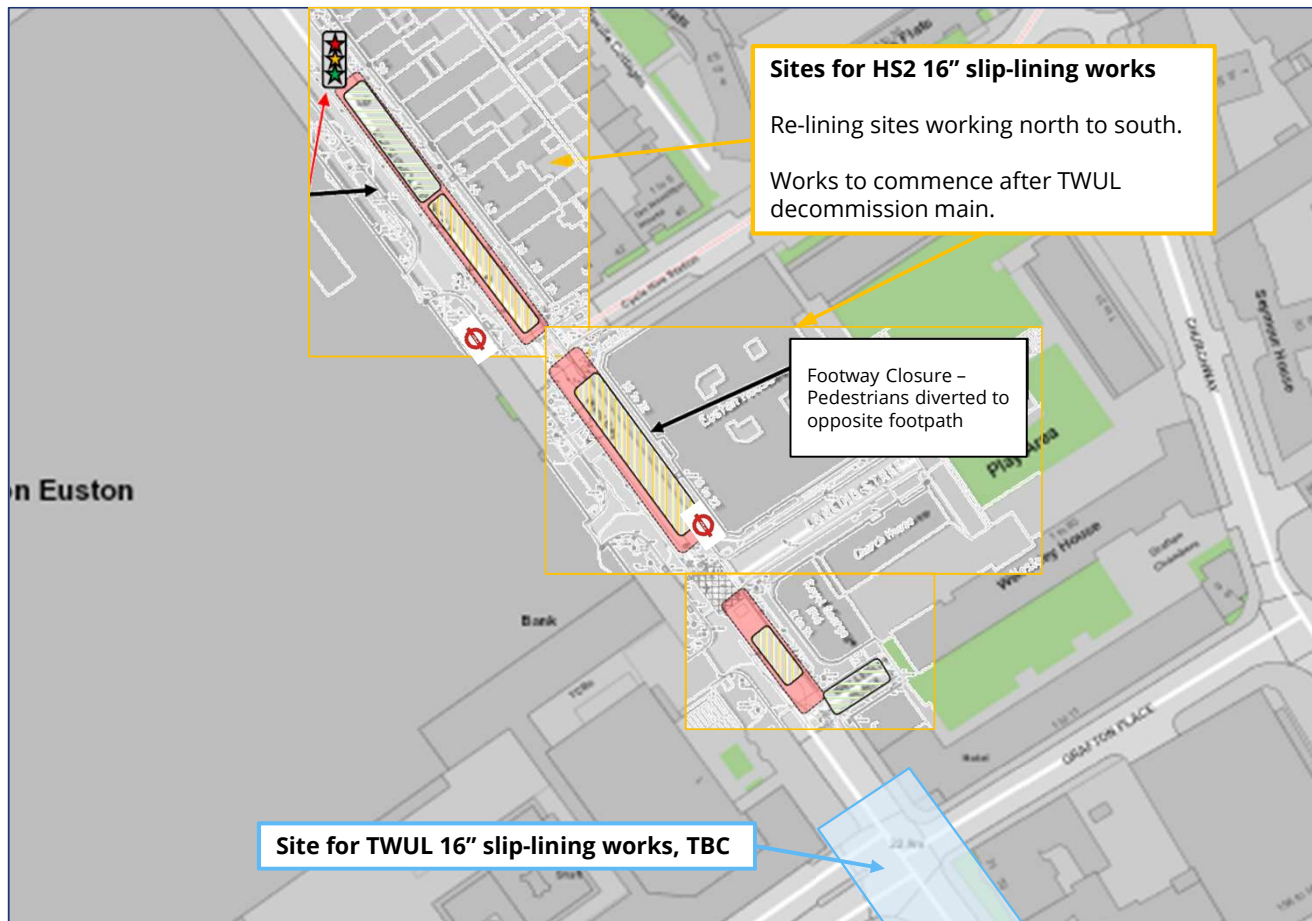
Independent Assessor (IA)

- We have commissioned a light touch desktop assessment tool that can be applied to certain property types known to be more susceptible to heat if residents apply for consideration
- HS2 has reviewed LOAEL residents (Lowest Observable Adverse Effect Level), it was recognised they may not be aware of their classification under the E23 Policy, nor the existence of the Special Case procedure. A communications strategy is being developed to address this.

Ampthill

- An integrated noise and ventilation system design is needed for the Ampthill Estate high rise blocks, which does not interfere with the cladding or fire safety systems
- Design is now progressing for a ventilation solution with an integral fan using the existing ducting and window trickle vents. This will be used in conjunction with secondary glazing and anti- solar gain film

Euston utilities - Eversholt Street



- We continue to work closely with Thames Water to share the effort of water main protection works
- HS2 aims to start the re-line of the failing 16" asset in the area of our works – reducing risk of bursts and impact on the community
- Work currently planned to start in early Summer – dependent on pre-condition surveys and agreement to work within proximity to the Thames Water 16" asset

Euston utilities – Gower and North Gower Street



Works are progressing on North Gower Street

- To avoid risk to vehicles, pedestrians and cyclists there is a road closure on North Gower Street.
- We continue to monitor traffic and pedestrian behaviours to ensure that any potential risk to road users and our workforce is managed

Zero carbon welfare units

- We are using autohybrid zero welfare units, which is an advancement on traditional diesel power systems.
- The units combine solar & hydrogen power to eliminate local carbon emissions, therefore, zero carbon emissions, zero fuel and very quiet with no vibrations.



Euston utilities – Stephenson Way and Euston Street

- We are carrying out diversion and protection works on Stephenson Way to remove services from the Wolfson Site
- At Euston Street we are working with UKPN works to ensure logistics routes and delivery/refuge access is maintained

- Use of acoustic barriers and tents where practicable, to mitigate noise generated from the works
- Where possible hand dig techniques are also being used



42" water main diversion



New connection in PVE on the existing 42" water main.

Completed pipe installation works - 1.5km

Zoo car park
Gloucester Gate
Osnaburgh Street

Cumberland Market
Albany Street

Robert Street
Redhill Street

Park Village East (PVE): 70m tunnel, two shafts fitted-out and connection made

Works remaining:

- **Albany Street** - new manhole being constructed to allow access to the sewer for ongoing maintenance, to complete in March
- **Bring new main into service** - to switch the flows the PVE worksite will stay in place and small worksites will be needed in Robert Street and Cumberland Market
- **Decommission the existing main** - needs a number of small pits along the length of PVE and Augustus St. The main will not be removed but filled with grout.
- **Zoo car park** - phased handover to SCS
- **PVE** - two final pipes being manufactured and due to be installed in March

Network Rail Euston current activity update



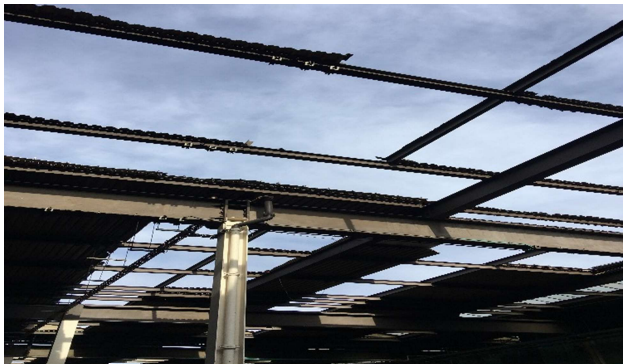
West Ramp demolition underway



Opening up of Piazza and mini-market



Euston escalator upgrades



Removal of platforms 17 & 18 roof



Materials by rail ongoing environmental benefits



Spring WCML passenger disruption campaign

Work practices to reduce environmental impacts at Euston

Euston west ramp materials reused to reduce transportation effects

1st phase delivered so far:

- 98% reduction in transport miles (450 miles avoided)
- Diversion of 175 tonnes of waste from third party to HS2 works
- 1090kg CO2 saved (72% reduction)

Use of electrified and low carbon plant across Euston works is helping:

- To reduce emissions and improve air quality
- Minimise generator usage onsite
- Hydrogen fuel cell technology tower lights being used instead of generators

Since 2016 our movement of material by rail rather than road has:

- Removed 1068 trucks from the roads, avoiding around 482 tonnes of carbon, a reduction of 70%



Hydrogen fuel cell technology tower lights



Electric vehicle

Main Works Noise Modelling

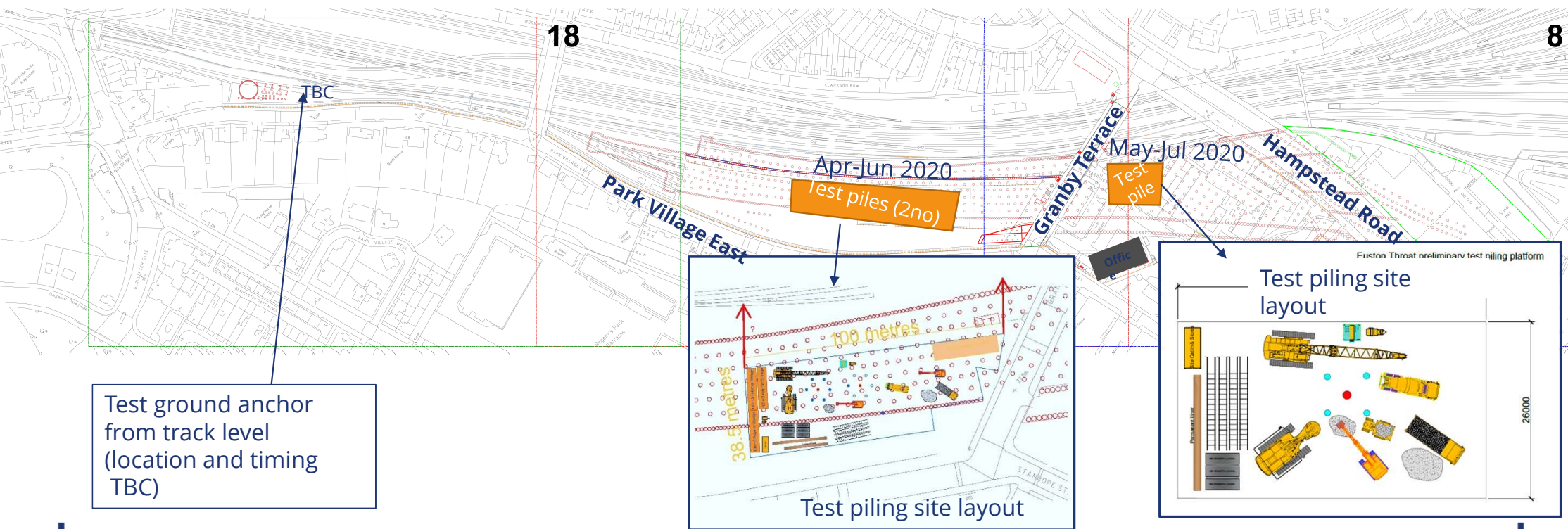
Summary of findings

The construction noise assessment demonstrates that compared with the ES (as amended), **no new residential receptors have been identified as eligible for NI or TRH.**

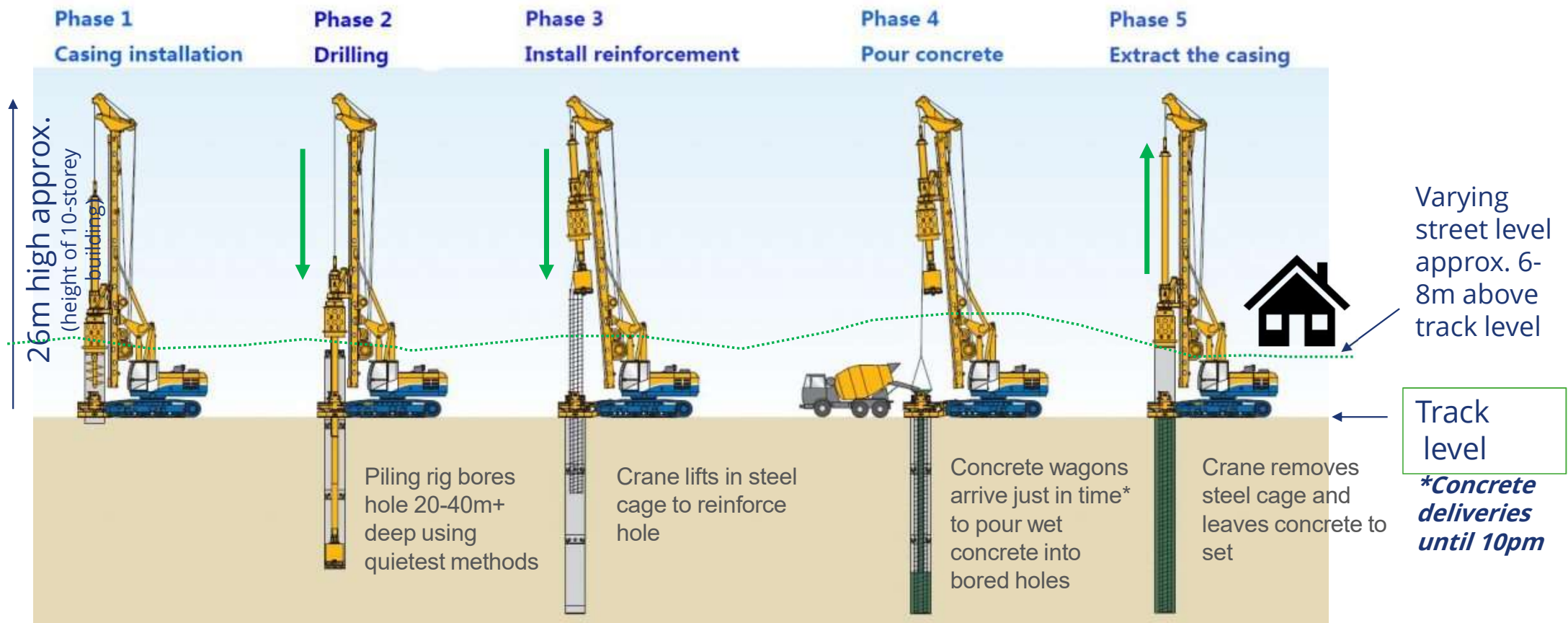
The noise model is based on a “worst case” scenario:

- Highest noise level for each item of plant
- Longest “on-time” for each item of plant
- Activity durations taken as the longest (including contingency periods)

Test piling and test ground anchor from April 2020



Piling using quietest methods available (auger boring)



12 month lookahead - Indicative

March	April	May
<ul style="list-style-type: none"> Start of basement backfill at Wolfson, Walkden and Calumet Regent's Park Estate (RPE) above ground demolitions complete Utility works Gower and North Gower Street Utility surveys ongoing in north of borough 	<ul style="list-style-type: none"> Euston Signal Box removal of fittings St James's Gardens exhumations & investigations (exc. reinternments) complete Euston Street utilities Site set up at Adelaide Road Street level hoarding at PVE north Hoarding changes and preparation for main works at RPE Test piling at former DB Cargo shed Topographical surveys in Euston area 	<ul style="list-style-type: none"> Walkden House above ground structure demolition complete Removal of below ground structures of demolished buildings in RPE complete Test ground anchor at PVE (track level)
June	July	August
<ul style="list-style-type: none"> Utility works in Eversholt Street Calumet above ground demolition complete Basement works at towers start Euston Signal Box demolition starts Work starts on utility diversions adjacent to Hampstead Road Bridge Preparation for earthworks at DB Cargo shed area Installation of the pile mat in the Hampstead Road site 	<ul style="list-style-type: none"> Completion of Thames Water 42" main diversion works Wolfson House demolished to basement 	<ul style="list-style-type: none"> Start of Cardington Street exhumations Preparation for ground anchor installation at DB Cargo shed area

12 month lookahead - Indicative

September	October	November
<ul style="list-style-type: none">• Vehicle holding area operational at Zoo car park• Main piling from Granby Terrace Bridge to Hampstead Road• Piling for station in Hampstead Road construction site starts (duration 3 months)	<ul style="list-style-type: none">• Street level layby construction starts at Park Village East (north)• Install ground anchors from Parkway to DB Cargo shed area• Main piling in DB Cargo shed area	<ul style="list-style-type: none">• Earthworks start at Adelaide Road• Excavation starts between Granby Terrace Bridge and Hampstead Road
December	January 2021	February 2021
<ul style="list-style-type: none">• Completion of vehicle layby at Park Village East (north)	<ul style="list-style-type: none">• Completion of earthworks at Adelaide Road• Completion of piling for station box	<ul style="list-style-type: none">• Awaiting update