

# HS2

## HS2 Update 16 June 2020

## £650,000 award for Drummond Street

Drummond Street receives the largest HS2 Business and Local Environment Fund award.

Towards a revitalisation programme which includes improved overhead lighting, street furniture, improvements to shop frontages and a communal space in Foundry Mews.



# Community engagement update

- Hosted our first walkabout by video. Received good feedback. Welcome views on how to continue to deliver this effectively.
- Day to day engagement has continued through phone calls, notifications , commonplace website and virtual meetings
- Our contractors have joined forces to support local organisations during the COVID-19 crisis. We delivered much needed supplies to the Euston Foodbank; ppe to UCH and chapter 8 barriers and paint to Netley School to assist with social distancing.
- We've been using our hoardings to show our support for the NHS.





# Enabling works update



**Piazza and Towers  
demolition**



**Walkden, Wolfson, Ibis and  
Thistle demolitions substantially  
completed**



**St. James's Gardens – works continue  
in preparation for next phase of  
exhumations**



# Enabling works update



**Park Village East and Power Signal Box**



# Utility works–Hampstead Rd

## Completed :

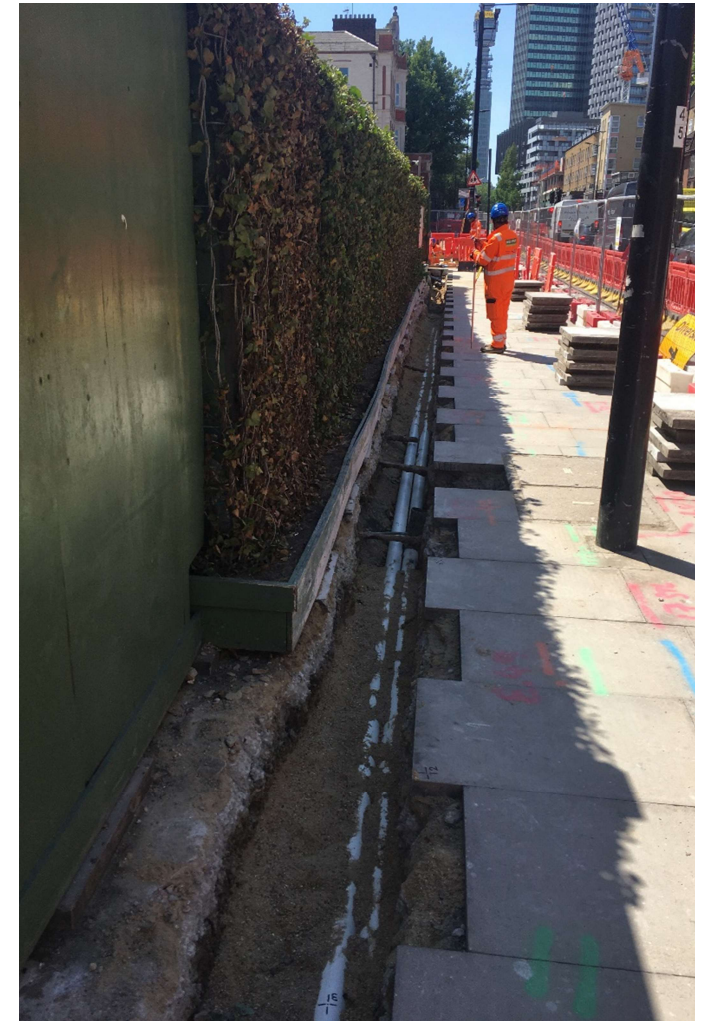
3 no. trial holes to prove route  
Installation of 102m of duct  
40m of paving reinstated

## Remaining:

Ducts to junction of North Gower St and 2 chambers to be constructed  
Cut and Cap 250mm at junction of Cardington St - gas  
Cut and Cap 180mm at junction of Cardington St - water

## Challenges

Concrete on footpath broken out using hand tools  
Maintain access to Margarete Centre through the week -  
section was completed over the weekend.





# Utility works - Hampstead Rd & North Gower St

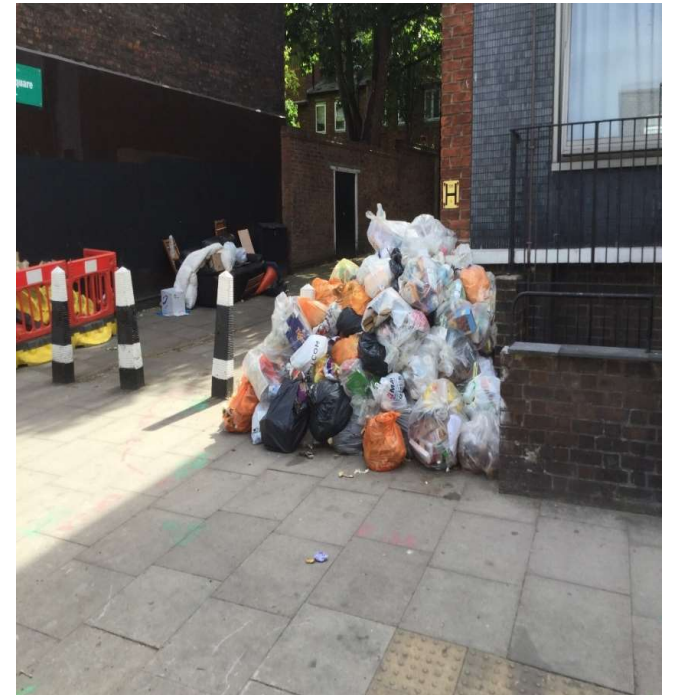
Tracked barrow used to transport material due to congested utilities



Traffic management to enable social distancing



Fly tipping removed before works began





# Utility works - Gower Place

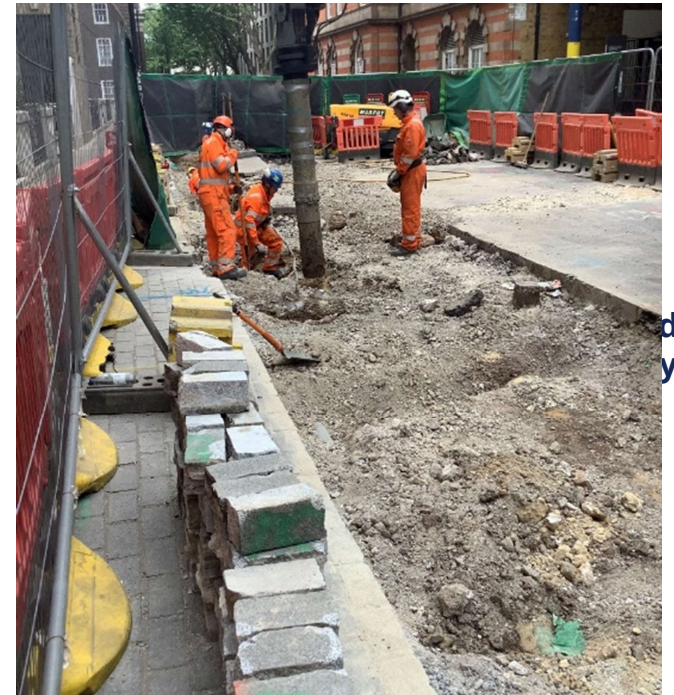
**Excavation works outside  
Welcome Trust.**



**Old concrete piles that were  
investigated with LB Camden**



**Vacuum excavator to speed up  
process and enable safe digging  
around buried assets.**





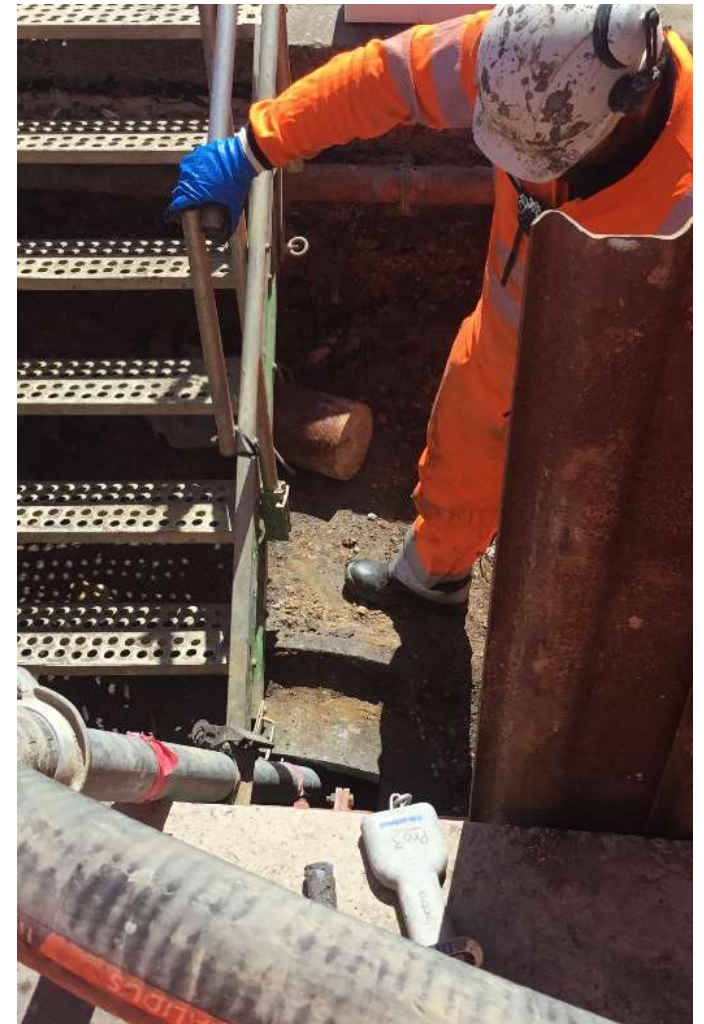
# 42" water main diversion

## Completed

Final connections and tests for the diverted pipeline.  
New manhole in Albany Street.  
Successful commissioning of new pipeline.  
Zoo car park handover to Main Works.  
Augustus Street decommissioning.

## Works remaining:

PVE decommissioning - due to complete mid-June  
PVE secondary diversions.  
Remaining handover to SCS at the Zoo car park - due mid-June.



# Noise Insulation

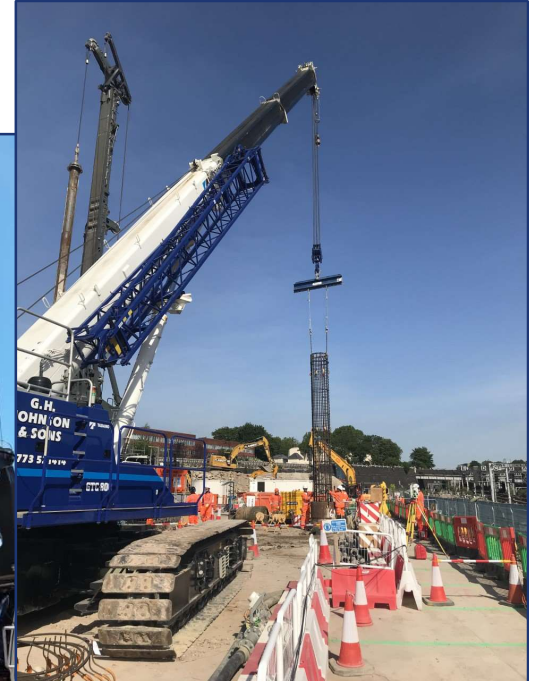
Stage of process	Number	Overheating tool
Total number of properties in scheme	1409	<ul style="list-style-type: none"> <li>• Work is progressing on the light touch desktop assessment tool for certain property types, known to be more susceptible to heat.</li> <li>• We are carrying out 725,000 simulations.</li> <li>• An overview of the tool will be presented to NIWG.</li> </ul>
Response received / interest shown	848	
Surveys completed	778	
Installed	<u>251</u>	Ampthill
<b>Programme update</b> <ul style="list-style-type: none"> <li>• Noise insulation works paused due to Government and Public Health England guidance.</li> <li>• Preparations underway for remobilisation and working arrangements to safeguard householders and contractors.</li> </ul>		<ul style="list-style-type: none"> <li>• Design progressing on integrated glazing and ventilation system for high rise blocks with ongoing liaison with LB Camden.</li> </ul>
		Mechanical ventilation for Listed Buildings
		<ul style="list-style-type: none"> <li>• Progressing procurement of supplier for the installation of mechanical ventilation in Listed Buildings.</li> </ul>



# Main Works test piling update

Test piling attended noise monitoring at three locations: Cubitt Court, Richmond House, Goldsmiths House

- Predicted range: **67-72dB**
- Actual range (average) **62.5-65dB** (on average lower by between -3.9dB and -7dB)
- Noise levels consistently below S61 predicted levels
- Monitored activities include drilling, use of mobile crane, excavator and road sweeper



# Vehicle Holding Area update

- SCS works started in January, but paused in March due to Covid-19
- Works are planned to recommence in June (tbc)
- A road closure is required – planned for the school holidays if possible
- Vegetation has been cleared for the new access/egress on Prince Albert Road, with additional trees to be removed when works start
- A road closure will be required – currently being timed for school holidays
- **Hedgehog protection:** a mammal tunnel under the new access/egress for safe crossing, an ecologist present at vegetation clearance, all fencing ensures safe hedgehog movements, about 500m of planting within Regents Park for relocating hedgehogs, new nesting boxes and a wildlife camera to record movements
- London Zoo joined a brainstorming session at our new welfare office
- The Royal Parks give toolbox talks on daily checks for hedgehogs and how to handle them if discovered – staff have had hedgehog handling training by





# Hampstead Road prep works from August 2020

August 2020

- Remove bicycle docking stations; disconnect power to pedestrian crossing, signal and lamp posts; permanent suspension of bus stops – nearest stops Mornington Crescent and Robert Street

Aug 2020-Sep 2020

- Traffic management scheme (stage 1) for removal of central reservation, Cartmel access/egress route alters

Sep 2020-Oct 2021

- Traffic management scheme (stage 2) to remove lamp posts, trees, charity bins, BT phone box, install fencing / hoarding, remove bus stop shelters and for first phase of utility diversion



# Adelaide Road update

- Removal of three traffic islands ongoing (to maintain two-way traffic flow past worksite)
- From 25<sup>th</sup> June, establishing site boundary and security arrangements
- Hoarding installation from late June to late July (2.4 metre high)
- Two way traffic reinstated once traffic island removal is complete.
- Late summer / autumn 2020 and light vegetation clearance, removal of the brick wall boundary wall, then tree felling.
- Ecological and arboriculture surveys and inspections prior to clearance works:





# Adelaide Road update

**Site Clearance** low level vegetation and shrubbery clearance only initially, to clear paths for ecology surveys

## **Planned ecology surveys:**

- Badger survey and Invasive Plant Species survey
- Update inspections during the vegetation clearance

**Watching briefs by ecologists** for breeding birds during main clearance works

- Any active nests found will be retained along with a suitably sized buffer until the young have fledged.

Removal to adjacent areas outside worksite of any dead wood suitable to support invertebrate species such as stag beetle

# Euston Station

## Phase 1: End of June

Site setup and installation of welfare facilities

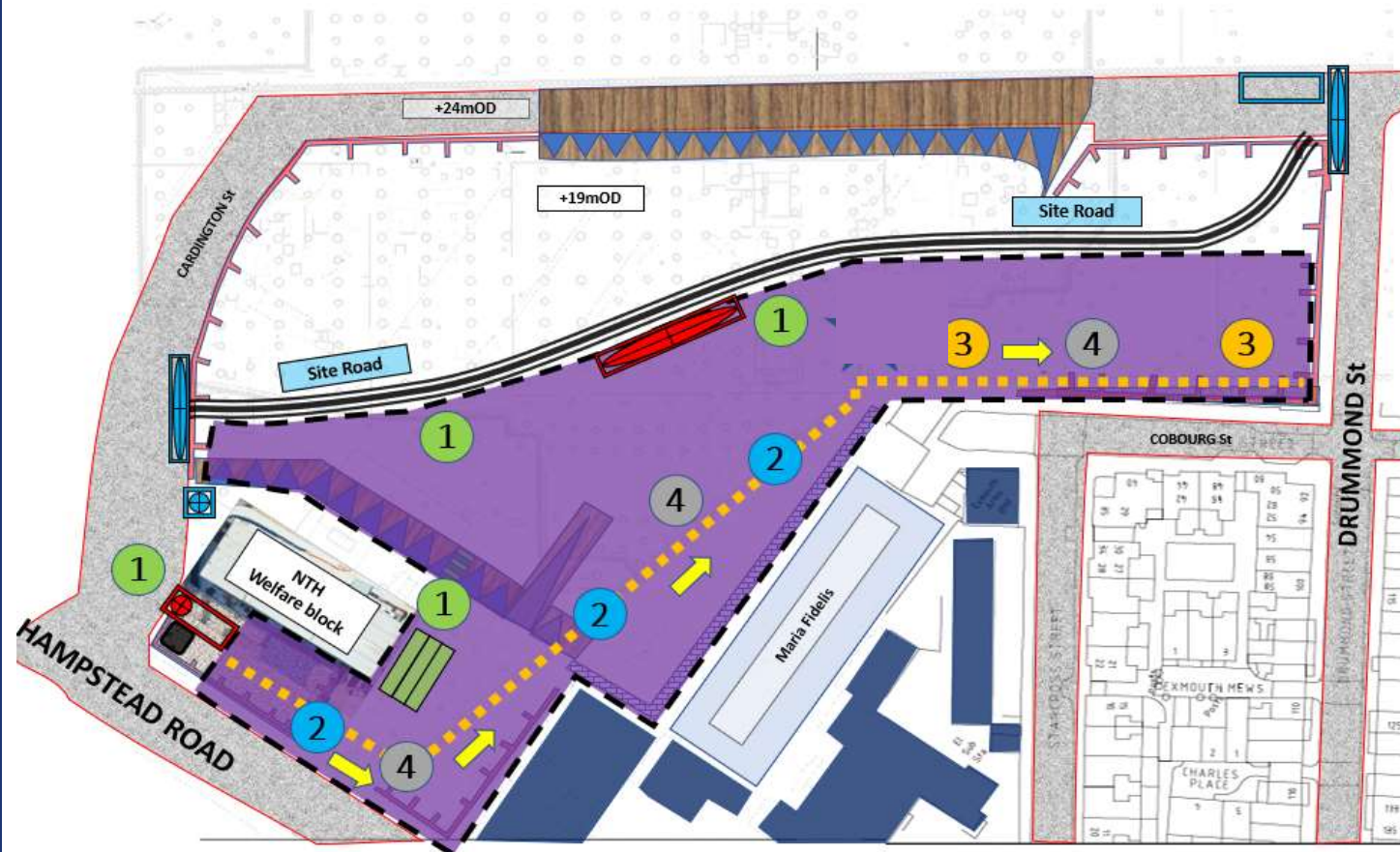
## Phases 2 and 3: Early July to Late September

Site surveys (two phases due to removal of obstructions on site)

Enabling works for Phase 4 (piling)  
- installation of piling mat and relocation of concrete structures

## Phase 4: Late September to January

Piling works (bored)



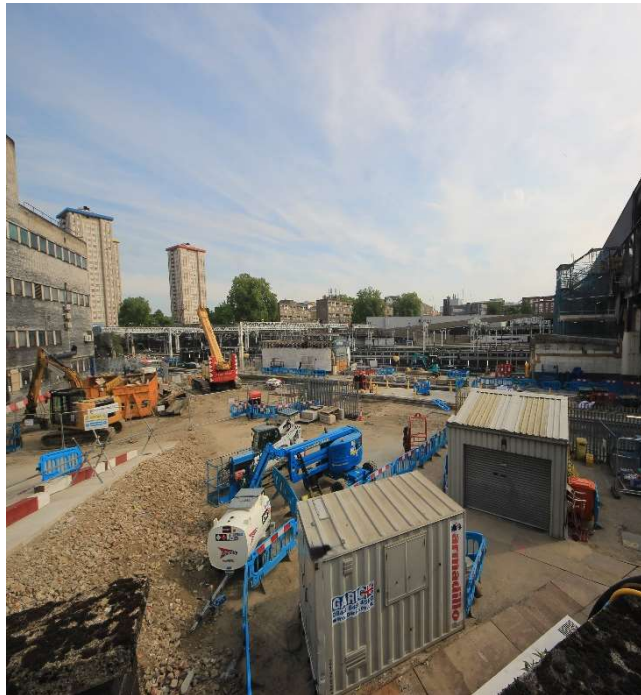


# Network Rail Euston current activity update

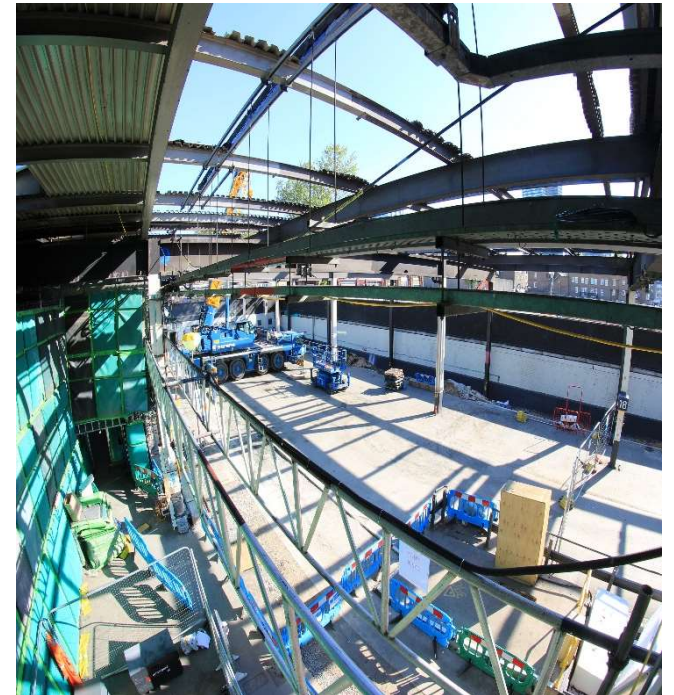
**Station improvements  
delivered in lockdown**



**West Ramp demolition  
nearing completion**



**Removal of canopy over  
platforms 17 & 18**



# Network Rail Euston current activity update

**Reuse of demolition waste at Euston**



**Accommodation and new welfare units needed**



**Euston escalator closure and upgrade underway**



# 12 month lookahead – Indicative\*

July	August	September
<ul style="list-style-type: none"> <li>• Completion of 42" main diversion</li> <li>• Regent's Park Estate (RPE) basement removals complete</li> <li>• RPE site boundary amendments and works adjacent to Hampstead Road</li> <li>• Utility works Gower and North Gower Street ongoing</li> <li>• Adelaide Road highway works ongoing</li> <li>• Test piling in the cutting ongoing</li> <li>• Granby Terrace site setup (track level) &amp; hoarding</li> <li>• Site surveys</li> <li>• Removal of canopy over platforms 17 and 18</li> <li>• Installing walkways in Camden Carriage sidings</li> </ul>	<ul style="list-style-type: none"> <li>• Euston Signal Box demolition</li> <li>• Street level hoarding at PVE north</li> <li>• Hoarding changes and preparation for main works at RPE</li> <li>• Preparation for station box piling at the former National Temperance Hospital site incl. installation of pile mat and relocation of concrete structures</li> <li>• Vegetation clearance at Adelaide Road</li> <li>• Hampstead Road street prep works</li> <li>• Base for installation of work container at Granby Terrace bridge</li> <li>• Construction of drivers walkway at Up Sidings near Mornington Terrace</li> <li>• Continuing fit and finishing work on Barnby St electrical substation</li> <li>• Installation of new 11kv cable route in Camden Cutting and Barnby substation</li> <li>• Station demolition and modification work at platforms 16, 17, 18</li> </ul>	<ul style="list-style-type: none"> <li>• Piling for station at former NTH site at Hampstead Road</li> <li>• Start of exhumations on Cardington Street</li> <li>• Boundary wall at Adelaide Road removed</li> <li>• Fit and finishing work on Barnby St electrical substation</li> <li>• Installation of new 11kv cable route in Camden Cutting through Barnby substation</li> <li>• Euston station demolition and modification work along platforms 16, 17 and 18 in Euston station</li> </ul>

\* Dates may change following impacts of COVID-19 on the programme and activities may need to be realigned. We will keep stakeholders informed in a timely manner



# 12 month lookahead – Indicative\*

October	November	December
<ul style="list-style-type: none"> <li>• Utility Works on Hampstead Road</li> <li>• PVE street level boreholes</li> <li>• Tree removals at Adelaide Road</li> <li>• Utility diversions adjacent to Hampstead Road Bridge</li> <li>• Station piling</li> <li>• Fit and finishing work on Barnby St electrical substation</li> <li>• Installation of new 11kv cable route in Camden Cutting through Barnby substation</li> <li>• Euston station demolition and modification work along platforms 16, 17 and 18 in Euston station</li> </ul>	<ul style="list-style-type: none"> <li>• Earthworks start at Adelaide Road</li> <li>• Main piling starts Mornington Street bridge to Hampstead Road</li> <li>• Install ground anchors northern end of site</li> <li>• Vehicle holding area operational at Zoo car park</li> <li>• Fit and finishing work on Barnby St electrical substation</li> <li>• Euston station demolition and modification work along platforms 16, 17 and 18 in Euston station</li> <li>• Install of 11kv cable route ongoing</li> </ul>	<ul style="list-style-type: none"> <li>• Granby Terrace/Stanhope Street site office</li> <li>• Station piling</li> <li>• Fit and finishing work on Barnby St electrical substation</li> <li>• Euston station demolition and modification work along platforms 16, 17 and 18 in Euston station</li> <li>• Install of 11kv cable route ongoing</li> </ul>

\* Dates may change following impacts of COVID-19 on the programme and activities may need to be realigned. We will keep stakeholders informed in a timely manner

# 12 month lookahead – Indicative\*

January 21	February 21	March 21
<ul style="list-style-type: none"> <li>• Construction of taxi rank (East Gardens)</li> <li>• Station piling</li> <li>• Prep works for demolition of Granby Terrace Bridge southern span</li> <li>• Earthworks at Adelaide Road</li> </ul>	<ul style="list-style-type: none"> <li>• Construction of taxi rank (East Gardens)</li> <li>• Completion of earthworks at Adelaide Road</li> <li>• Completion of piling for station box</li> <li>• Commence installation of ground anchors at DB Cargo</li> </ul>	<ul style="list-style-type: none"> <li>• Construction of taxi rank (East Gardens)</li> </ul>
April 21	May 21	June 21
<ul style="list-style-type: none"> <li>• Construction of taxi rank (East Gardens)</li> <li>• Piling works at Euston cavern</li> </ul>	<ul style="list-style-type: none"> <li>• Construction of taxi rank (East Gardens)</li> <li>• Utilities works northern end of site</li> </ul>	

\* Dates may change following impacts of COVID-19 on the programme and activities may need to be realigned. We will keep stakeholders informed in a timely manner

# Post Oakervee update - LW