

Park Village East and track-level works

July 2020 | www.hs2.org.uk

High Speed Two (HS2) is the new high speed railway for Britain.

We are continually reviewing the works on our construction sites in line with Government and Public Health England advice on dealing with COVID-19. The Government's strategy makes it clear construction activity can continue, as long as it complies with this guidance. Please be assured only sites that can operate within the guidelines are operational. You can sign up for regular updates in your local area at HS2inCamden.co.uk.

Works along Park Village East and in the cutting

Recent assessments have confirmed we need to remove the brick parapet wall and vegetation along Park Village East and carry out a range of other activities.

We will install hoarding in stages along Park Village East to screen our street-level works and act as a safety and noise barrier (map 1).

From 27 July to 30 September we will install 3.6m high hoarding south of Mornington Street bridge requiring a footpath and lane closure and intermittent parking bay suspensions. See maps 2, 3 and 4.

Map 1



If you have a question about HS2 or our works, please contact our HS2 Helpdesk team on 08081 434 434 or email HS2enquiries@hs2.org.uk.

Notification



Planned works

3.6m hoarding south of Mornington Street bridge late July to September

Hoarding along the rest of Park Village East in autumn

Brick parapet wall and tree removal behind hoarding

Street-level boreholes behind hoarding starting in autumn

Track-level borehole in core hours with large loads on weekends of 1 and 8 August and clearing foundations

Street-level site office and lorry lay-by starting in spring 2021

Monday to Friday: 8am to 6pm, Saturdays: 8am to 1pm (if needed) and two weekends with large load deliveries

What to expect

Intermittent parking bay suspensions, lane and footpath closures July to September and changes in the north of Park Village East from autumn

What we will do

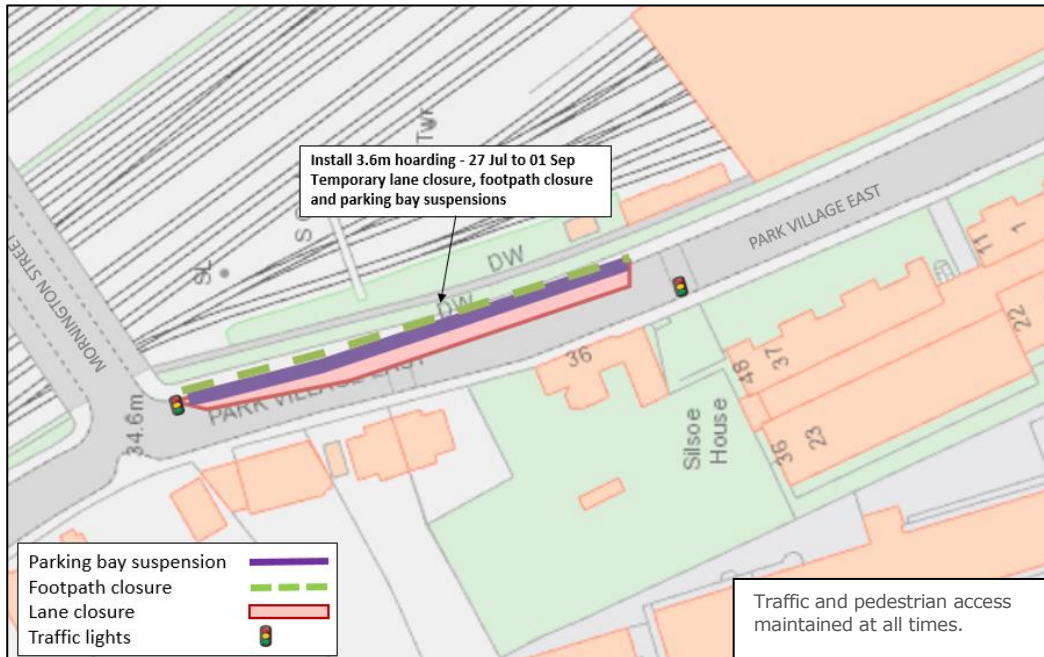
Provide updates to this notice at HS2incamden.co.uk

Park Village East and track-level works

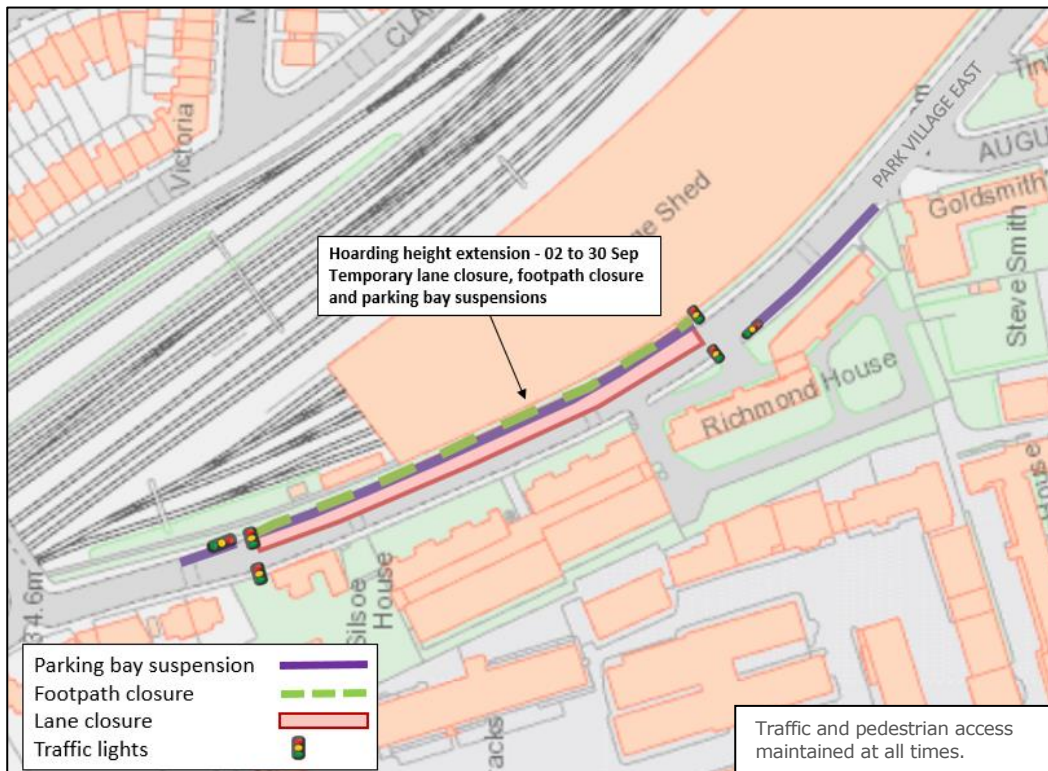
www.hs2.org.uk



Map 2 – hoarding near Mornington Street bridge (27 July to 1 September)



Map 3 – hoarding near DB Cargo shed (2 to 30 September)



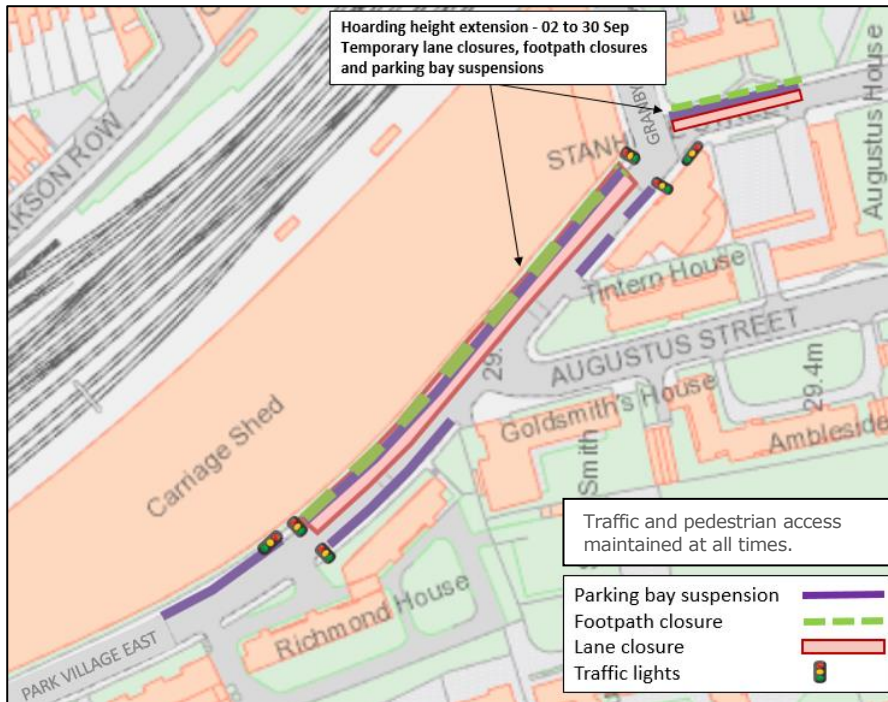
Contact our HS2 Helpdesk team on **08081 434 434**

Park Village East and track-level works

www.hs2.org.uk



Map 4 – hoarding near Granby Terrace bridge (2 to 30 September)



In autumn, we will install hoarding along the rest of Park Village East. The hoarding north of Mornington Street bridge will be located within the road but with enough space for vehicles to pass.

Once the hoarding is installed, we will remove the brick parapet wall for safety and drill boreholes every five metres in the footpath or road to manage groundwater. We need to remove all trees and vegetation to remove the wall and install the hoarding safely.

We are also planning a street-level site office north of Mornington Street bridge for spring 2021 behind the hoarding to provide welfare facilities for workers. There will also be a lorry lay-by so vehicles can make deliveries from the street down to the track-level worksite. Excavated material will not be removed via this lay-by and instead be carried at track level and removed from the southern end of our worksite.

We expect these works will impact parking bays and will update you when we have more detail.

We are planning high-quality graphics for the screening to mitigate the visual impacts. **We welcome your comments on how best to mitigate the visual impacts of the hoarding. Please contact the HS2 Helpdesk with your feedback.**

Track-level works

At track-level, we will clear the foundations of the DB Cargo shed from 20 July as well as carry out preparatory strengthening works to the retaining wall. We have now started detailed design of the strengthening works and will provide an update when we have a final design. In August, we will carry out a borehole in core hours, with large loads to be delivered on the weekends of 1 and 8 August.

Contact our HS2 Helpdesk team on **08081 434 434**

Keeping you informed

We are committed to keeping you informed about work on HS2. This includes ensuring you know what to expect and when to expect it, as well as how we can help.

Residents' Charter and Commissioner

The Residents' Charter is our promise to communicate as clearly as we possibly can with people who live along or near the HS2 route.

www.gov.uk/government/publications/hs2-residents-charter

We also have an independent Residents' Commissioner whose job is to make sure we keep to the promises we make in the Charter and to keep it under constant review. Find reports at:

www.gov.uk/government/collections/hs2-ltd-residents-commissioner

You can contact the Commissioner at: residentscommissioner@hs2.org.uk

Construction Commissioner

The Construction Commissioner's role is to mediate and monitor the way in which HS2 Ltd manages and responds to construction complaints. You can contact the Construction Commissioner by emailing: complaints@hs2-cc.org.uk

Property and compensation

You can find out all about HS2 and properties along the line of route by visiting:

www.gov.uk/government/collections/hs2-property

Find out if you're eligible for compensation at:

www.gov.uk/claim-compensation-if-affected-by-hs2

Holding us to account

If you are unhappy for any reason you can make a complaint by contacting our HS2 Helpdesk team. For more details on our complaints process, please visit our website:

www.hs2.org.uk/how-to-complain

Contact Us

Contact our HS2 Helpdesk team all day, every day of the year on:

 Freephone **08081 434 434**

 Minicom **08081 456 472**

 Email
HS2enquiries@hs2.org.uk

Write to:

FREEPOST

HS2 Community Engagement

Visit us at the former National Temperance Hospital at **112 Hampstead Road, London NW1 2PS.**

Websites: **www.hs2.org.uk**

www.hs2inCamden.co.uk

Please contact us if you'd like a free copy of this document in large print, Braille, audio or easy read. You can also contact us for help and information in a different language.

HS2 Ltd is committed to protecting personal information. If you wish to know more about how we use your personal information please see our Privacy Notice

<https://www.gov.uk/government/publications/high-speed-two-ltd-privacy-notice>

High Speed Two (HS2) Limited, registered in England and Wales. Registered office: Two Snowhill, Snow Hill Queensway, Birmingham B4 6GA. Company registration

Somali

Fadlan nala soo xiriir haddii bug-yarahaan bilaashka ah ku rabtid daabacad far waa-wayn, qoraalka indhoolaha, hab maqal ah ama si fudud loo akhrin karo. Waxaan xittaa macluumaadka ku bixin karnaa luqado kala duwan. Qof ayaad ka codsan kartaa inuu wakiil ka noqdo markaad la hadlayso HS2 Ltd.

Español

Póngase en contacto con nosotros en caso de que desee recibir una copia gratuita de este folleto en caracteres grandes, braille, audio o en formato de lectura fácil. También podemos proporcionar la información en distintos idiomas. No dude en pedirle a alguien que le represente en cualquier conversación con HS2, Ltd.

Français

Merci de nous contacter si vous désirez une copie de cette brochure en grands caractères, en braille, en version audio, ou en lecture simplifiée. Nous pouvons également vous fournir des informations dans différentes langues. Vous pouvez demander d'être représenté(e) par un tiers pour tout échange avec HS2 Ltd.

Bengali

যদি আপনাকে এই প্রচারপত্রটির বড় অক্ষর, ব্রাইল, অডিও বা সহজ পাঠযোগ্য বৈশিষ্ট্যের প্রতিলিপির প্রয়োজন থাকে অথবা আপনি আরও তথ্য জানতে চান তবে আমাদের সাথে যোগাযোগ করুন।

সার্বজনীনভাবে প্রাপ্য এই ডাটা আমাদের বৈশিষ্ট্য দিয়ে প্রতিলিপিত করা। এইচএস২ লিমিটেড (HS2 Ltd.)-এর সার্বজনীন

আরোচনায় আপনাকে প্রতিলিপিত করার জন্য আপনাকে কাউকে জিজ্ঞাসা করতে হবে আপনাকে স্বাক্ষর জমা দিতে।