

**SKANSKA**



**STRABAG**

Working in  
partnership with

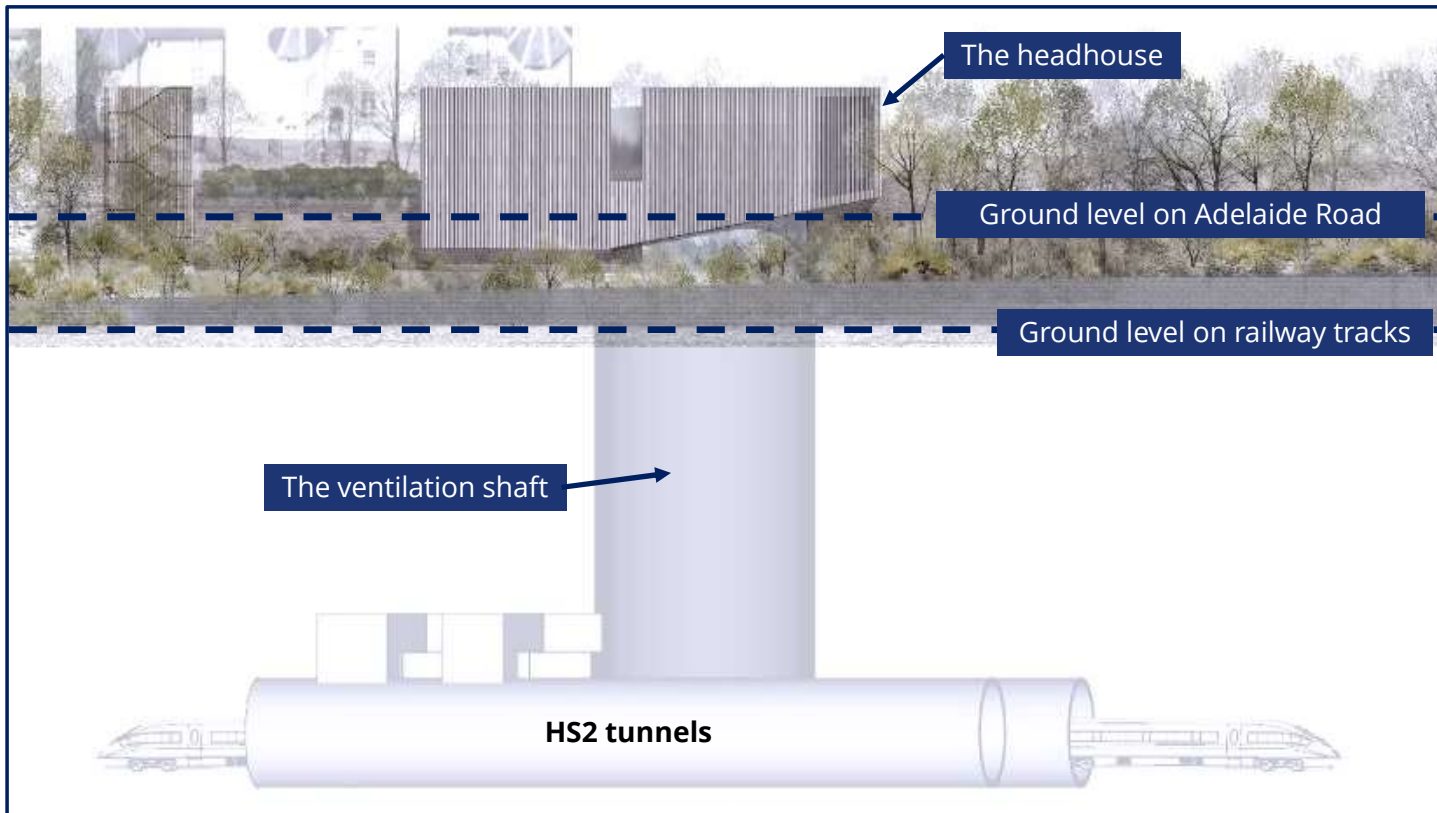
**HS2**

# Adelaide Road site

Online community update meeting - 22 July 2021

# Adelaide Road ventilation shaft and headhouse

We are preparing to build a ventilation shaft and headhouse at the Adelaide Road site, which will connect to the HS2 tunnels.



Ventilation shafts and headhouses are an essential part of building a new railway. These are permanent structures which will connect to the HS2 tunnels. These will provide access to the tunnels for maintenance and emergency services, ventilation and electrical power supply.

We plan to start building the ventilation shaft at this site from 2022 and the headhouse from 2023, but these dates may change.

# Current and upcoming works at the Adelaide Road site in 2021

Current and upcoming works	Planned date*
Site clearance and removal of vegetation (within site)	Ongoing
Further site boundary works and installation of work access gates	July / Aug 2021
Installation of new welfare cabins	July 2021
Network Rail utility diversion works (within site)	From summer / Autumn 2021
Preparation for piling works which include further surveys	Summer 2021
Network Rail retaining wall works	Autumn 2021
Piling works	Autumn / winter 2021
Installation of ground anchors	Winter 2021

**\*the dates for these works might change. We'll provide updates at [HS2incamden.co.uk](https://www.hs2incamden.co.uk)**



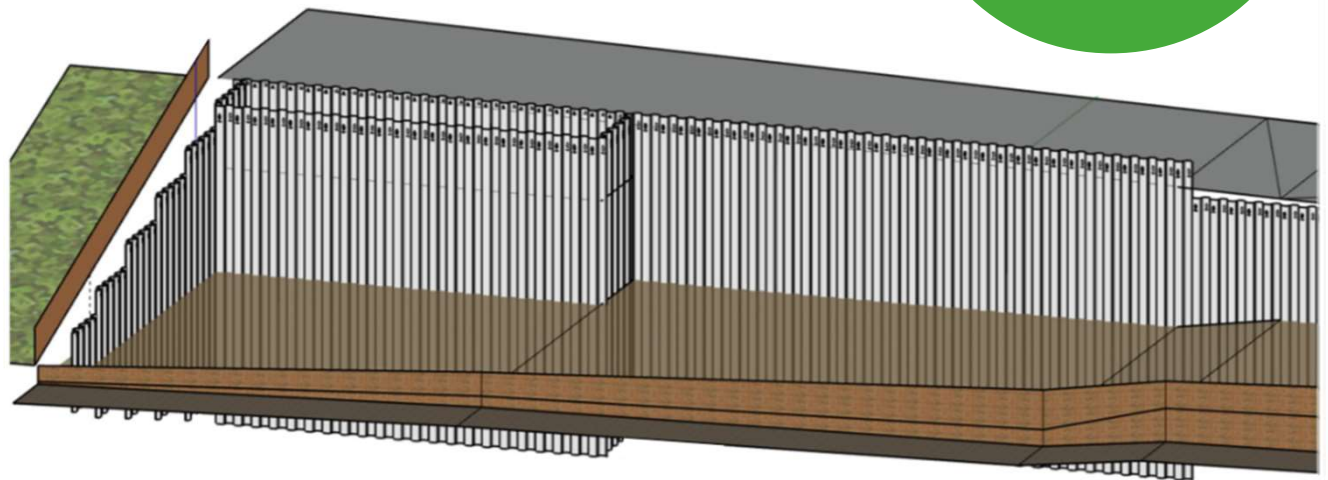
# Update about upcoming works – sheet piling

From October 2021\* we will start installing sheet piles at the Adelaide Road site to provide ground stability and support during future works to build the ventilation shaft.

To install the sheet piles, we will use a silent push pull method. This will be completed by using a pre-auger drill to loosen the ground and then install the piles into place.

We will install  
290 piles to  
form a 200  
metre wall

The sheet piles  
will be up to 16  
metres deep  
and up to 1  
metre in width



\*the dates for these works might change. We'll provide updates at [HS2incamden.co.uk](https://www.hs2incamden.co.uk)

# Update about upcoming works - ground anchors

From December 2021\* we will start installing ground anchors at the Adelaide Road.

Ground anchors are lightweight, corrosive resistant rods or cables installed into the ground to hold, restrain and support building, civil engineering works and other structures, either permanently or temporarily.



Install 235  
ground anchors

The ground  
anchors will be  
up to 35 metres  
long and about  
one to three  
metres apart

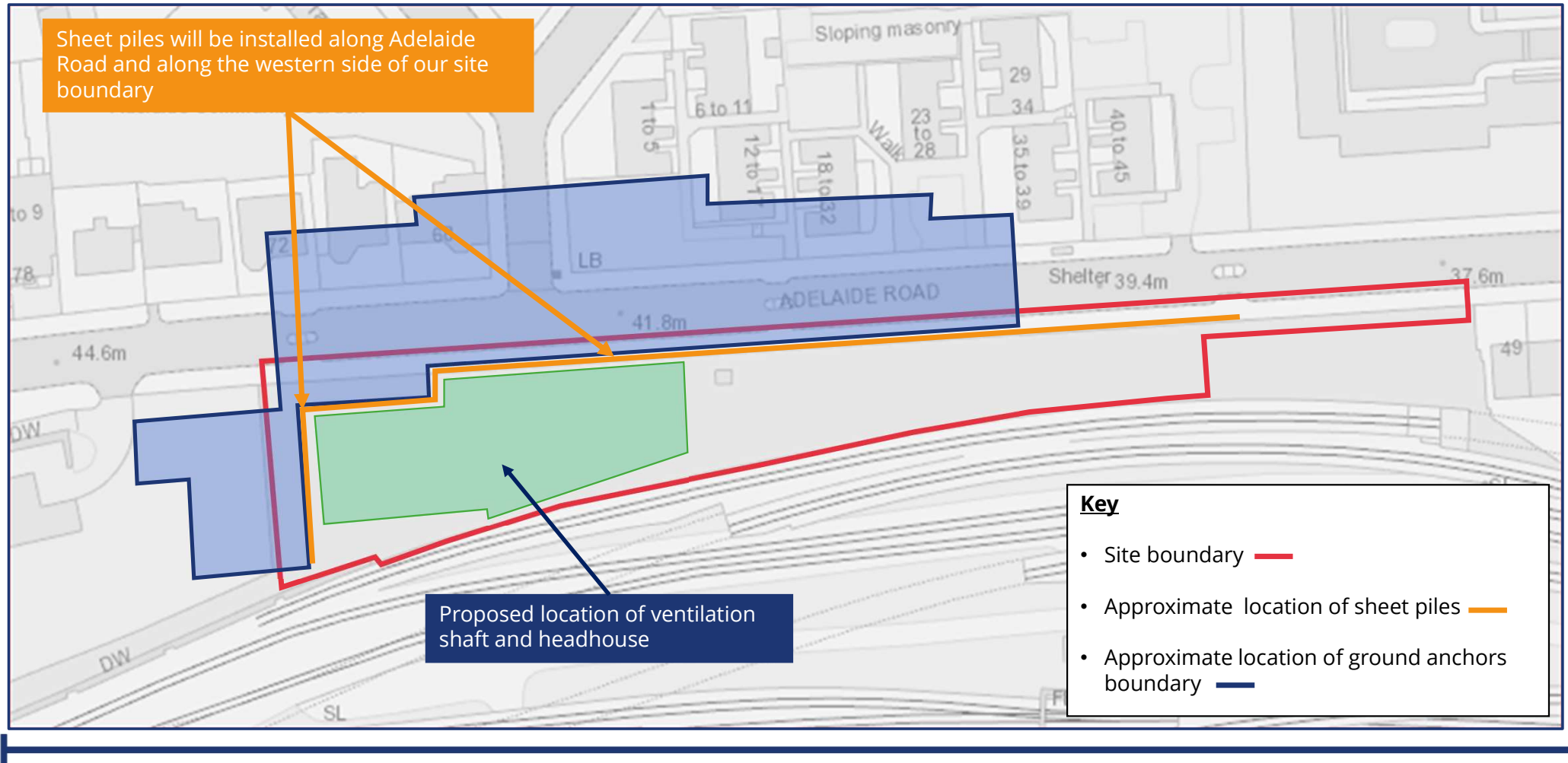
Anchors will be  
carefully  
designed to  
avoid  
underground  
structures and  
services

---

\*the dates for these works might change. We'll provide updates at [HS2incamden.co.uk](https://www.hs2incamden.co.uk)



# Upcoming works – location of sheet piling and ground anchors

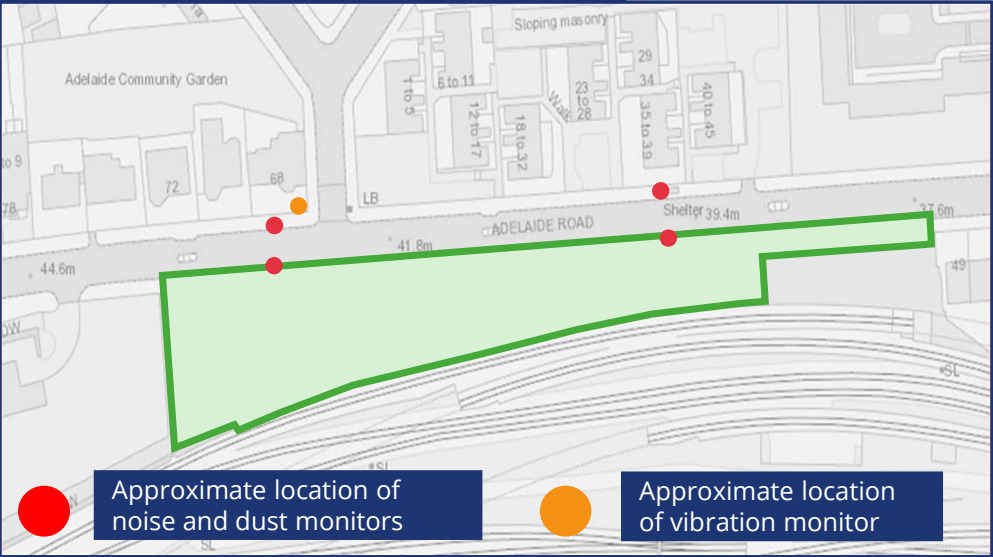


# Measures to minimise disruption

We will continue to assess our working methods during our works to ensure we maintain good working practices and keep disruption to a minimum.

Type of disruption	Measures in place
Noise	Noise monitors located around site and vicinity to ensure that we keep to agreed levels  Acoustic barriers used where possible
Dust	Dust monitors located around site and vicinity to ensure that we keep to agreed levels
Vibration	We have installed a vibration monitor within the garden of 68 Adelaide Road. We are planning to install a second vibration monitor.  These will be installed before piling works start to ensure we keep to agreed levels.
Site lighting	Lighting is required on site for security and safety reasons.
Core working hours	Monday to Friday from 8.00am to 6.00pm and Saturdays 8.00am to 1.00pm (If needed)  Extended working will be required during some phases of our works. We'll provide updates at <a href="https://www.hs2incamden.co.uk">HS2incamden.co.uk</a>

Approximate location of monitors on site



We wrote to recently about a temporary road closure on Adelaide Road on 17 July and 31 July. Due to unforeseen circumstances, the road closure on 17 July did not happen as planned.

You can view the latest update about these works at [www.hs2.org.uk/in-your-area/map](http://www.hs2.org.uk/in-your-area/map)

**\*the dates for these works might change. We'll provide updates at [HS2incamden.co.uk](https://www.hs2incamden.co.uk)**

The map shows the Adelaide Road site, which is highlighted in yellow. A red line indicates the road closure along Adelaide Road. A blue line shows the diversion route for vehicles, which goes from Adelaide Road, turns right onto Provost Road, then left onto Eton Road, and finally right onto Eton College Road. A green line shows the diversion route for cyclists and pedestrians, which goes from Adelaide Road, turns right onto Provost Road, then left onto Eton Road, and finally right onto Eton College Road. An orange arrow points to the Beaumont Walk carpark, indicating access for Beaumont Walk residents only. The map also shows St Saviour's Church, St Saviour's Primary School, and the Constable House.

**Key**

- Road closure
- Diversion route
- Cyclist and pedestrian diversion route
- Access to Beaumont Walk carpark (Beaumont Walk residents only)

The map shows the Adelaide Road site highlighted in yellow. A red line indicates the road closure. A blue line shows the diversion route. A green line shows the cyclist and pedestrian diversion route. An orange arrow points to the access to Beaumont Walk carpark. Surrounding areas include the Adelaide Community Garden, Cleaver House, and the Pamrose Hill Tunnels. A key in the bottom right corner explains the symbols used.

**Key**

- Road closure
- Diversion route
- Cyclist and pedestrian diversion route
- Access to Beaumont Walk carpark (Beaumont Walk residents only)



# Upcoming design engagement

During September 2021, we will be running events to update you about the design of the Adelaide headhouse and future landscaping plans. You will have opportunity to ask questions about the design and provide your feedback.

Engagement type	Planned date*
Information available on HS2 website	From September 2021
Online webinar	Thursday 9 September 2021, 6pm to 7:30pm
Online webinar	Monday 13 September 2021, 12pm to 1:30pm
Face to face event (following Covid-19 guidance as required)	Wednesday 15 September, 3pm to 8pm

\*These dates remain subject to confirmation. We will write to local community shortly with information about how to attend.

---

# Keeping you informed

## View our latest works updates

You can find out more about our ongoing and upcoming works at [HS2inCamden.co.uk](https://HS2inCamden.co.uk)

## Join our virtual 1 to 1s

Every month , we will be running a virtual 1:1 where you can speak with our community engagement team. To register your attendance please visit [HS2.co.uk/events](https://HS2.co.uk/events)

## Contact us

You can contact the HS2 Helpdesk team all day, every day of the year on:

- Freephone: 08081 434 434
- Minicom: 08081 456 472
- Email: [hs2enquiries@hs2.org.uk](mailto:hs2enquiries@hs2.org.uk)



# Questions

Please type your questions in the Teams chat box or raise your hand.

