

Update: further drainage surveys and vegetation clearance

January 2021 | www.hs2.org.uk

High Speed Two (HS2) is the new high speed railway for Britain.

We are continually reviewing the works on our construction sites in line with Government and Public Health England (PHE) advice on dealing with COVID-19. The Government's current strategy makes it clear that construction activity can continue as long as it complies with this guidance. Please be assured that only sites that can work within the guidelines are operational. All sites will remain under constant review.

Drainage surveys from 10 February 2021

We recently wrote to you in December last year about drainage surveys being carried out in your area. We will be carrying out further surveys on Adelaide Road from 10 to 12 February 2021.

Each survey is planned to take place in one overnight shift from 9pm to 6am in order to minimise disruption to the road network. We will use a camera to investigate the condition of the drainage system and may need to flush the system using a high-pressure water jet.

Temporary changes while we carry out the surveys

On 10 and 11 February 2021, lane closures will be in place overnight on Adelaide Road near the junction with Lower Merton Rise and Elsworthy Rise. Parking bay suspensions will be in place on Adelaide Road and bus stop M (Elsworthy Rise) will be suspended overnight.

On 12 February, a lane closure will be in place overnight on Adelaide Road, opposite Constable House. Parking bay suspensions will be in place overnight. Temporary traffic lights will be in place while the surveys are carried out.

Maps showing the survey locations are included on the following pages.

If you have a question about HS2 or our works, please contact our HS2 Helpdesk team on 08081 434 434 or email HS2enquiries@hs2.org.uk

Notification



Duration of works

Utility surveys will take place from 10 to 12 February 2021

The surveys will take place overnight from 9pm to 6am

Vegetation and tree removal will take place from February 2021 for up to six weeks

We may be on site for an hour before the start and/or end of each shift

What to expect

Temporary traffic management will be in place overnight

A water tanker will be present during the surveys in case we need to flush the drainage system

We will remove vegetation and trees from within our site boundary

What we will do

Keep disruption to a minimum

We will provide updates at HS2incamden.co.uk

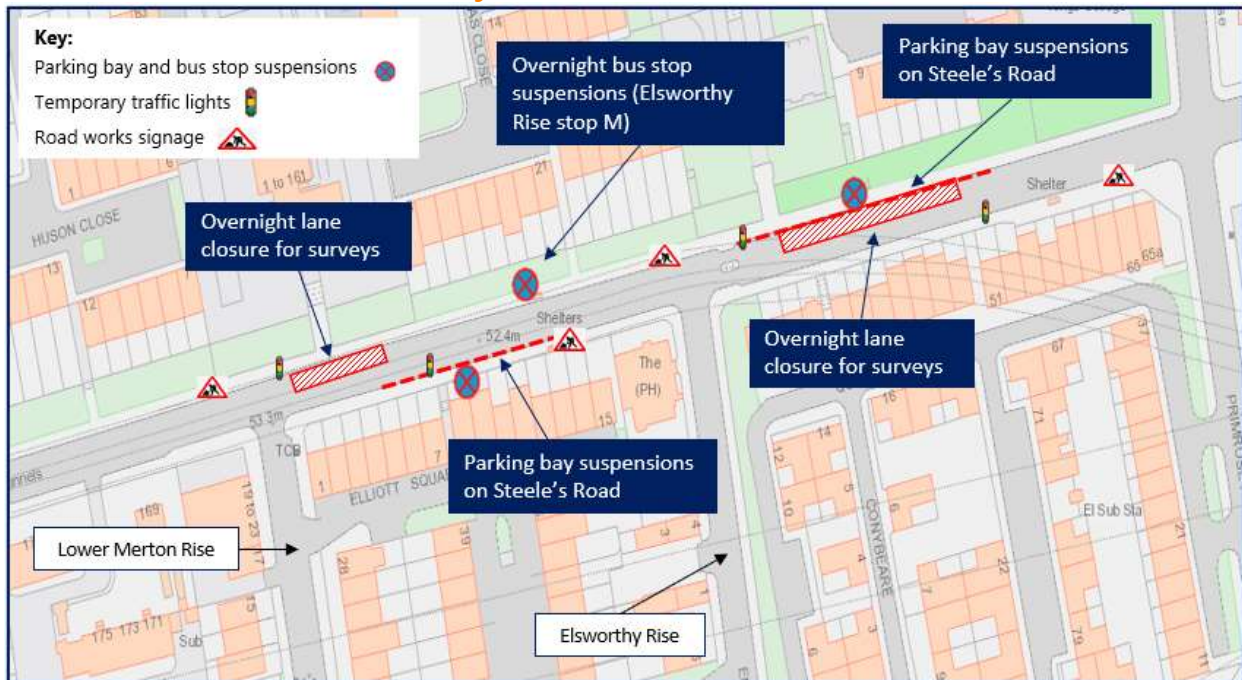
Update: further drainage surveys and vegetation clearance

Notification

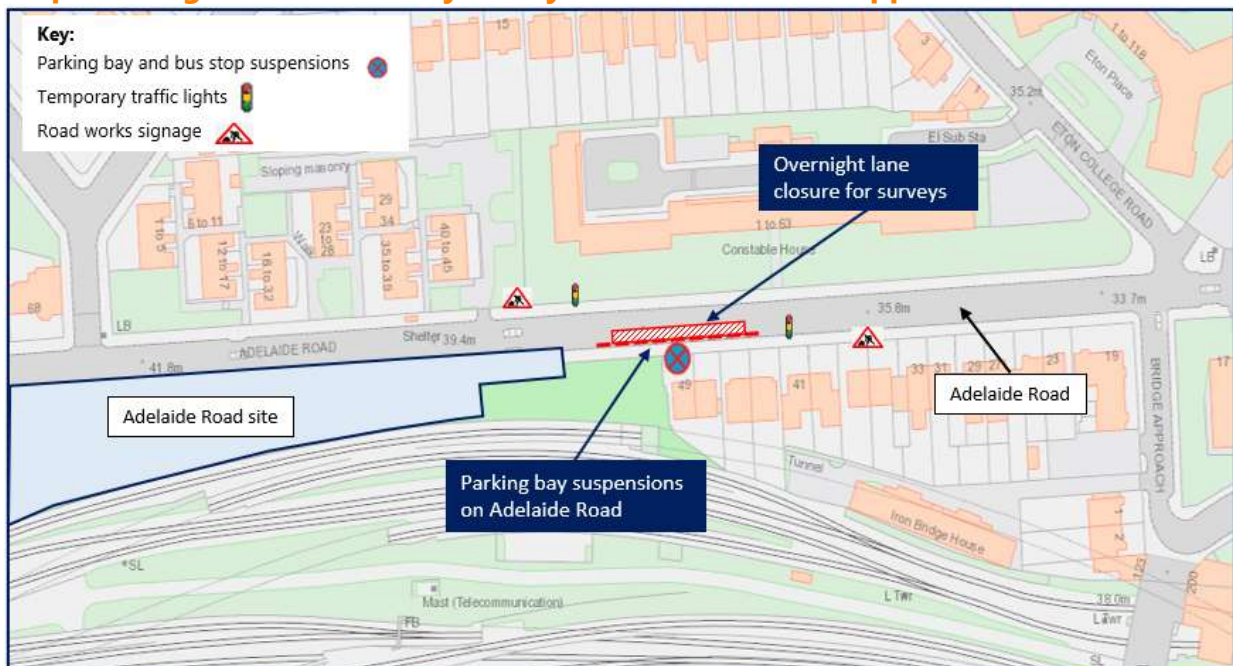


www.hs2.org.uk

Map showing location of utility surveys on Adelaide Road near the junction with Lower Merton Rise and Elsworth Rise



Map showing location of utility surveys on Adelaide Road opposite Constable House



Contact our HS2 Helpdesk team on **08081 434 434**

Update: further drainage surveys and vegetation clearance

Notification



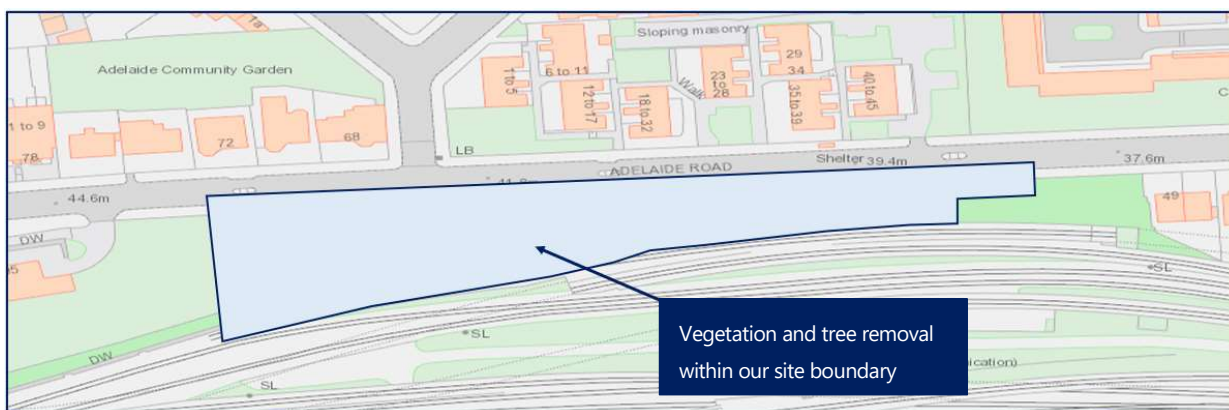
www.hs2.org.uk

Update about works within the Adelaide Road site

We wrote to you in December 2020 about ongoing works within the Adelaide Road site. We have been carrying out low level vegetation clearance within the site and had planned to start tree removal works from January 2021.

Works to remove further vegetation and trees within the site have been re-scheduled and will now take place from February 2021. Our works do not include removal of vegetation or trees within the Adelaide Nature Reserve.

You can view a map showing the location of our works below:



The dates for these works may change. We'll provide updates at hs2incamden.co.uk.

Online community drop-in late February 2021

We are planning to hold an online community update meeting about upcoming works at our Adelaide Road site in late February 2021. We will write to you with more information about this shortly and we will provide more information at HS2inCamden.co.uk

www.hs2.org.uk

Contact our HS2 Helpdesk team on **08081 434 434**

Keeping you informed

We are committed to keeping you informed about work on HS2. This includes ensuring you know what to expect and when to expect it, as well as how we can help.

Residents' Charter and Commissioner

The Residents' Charter is our promise to communicate as clearly as we possibly can with people who live along or near the HS2 route.

www.gov.uk/government/publications/hs2-residents-charter

We also have an independent Residents'

Commissioner whose job is to make sure we keep to the promises we make in the Charter and to keep it under constant review. Find reports at:

www.gov.uk/government/collections/hs2-ltd-residents-commissioner

You can contact the Commissioner at:
residentscommissioner@hs2.org.uk

Construction Commissioner

The Construction Commissioner's role is to mediate and monitor the way in which HS2 Ltd manages and responds to construction complaints. You can contact the Construction Commissioner by emailing:
complaints@hs2-cc.org.uk

Property and compensation

You can find out all about HS2 and properties along the line of route by visiting:

www.gov.uk/government/collections/hs2-property

Find out if you're eligible for compensation at:

www.gov.uk/claim-compensation-if-affected-by-hs2

Holding us to account

If you are unhappy for any reason you can make a complaint by contacting our HS2 Helpdesk team. For more details on our complaints process, please visit our website:

www.hs2.org.uk/how-to-complain

Reference number: HS2-EW-SCS-Ph1-Ar-So-S1-Site-27-26/01/2021

Somali

Fadlan nala soo xiriir haddii bug-yarahaan bilaashka ah ku rabtid daabacad far waa-wayn, qoraalka indhoolaha, hab maqal ah ama si fudud loo akhrin karo. Waxaan xittaa macluumaadka ku bixin karnaa luqado kala duwan. Qof ayaad ka codsan kartaa inuu wakiil ka noqdo markaad la hadlayso HS2 Ltd.

Español

Póngase en contacto con nosotros en caso de que desee recibir una copia gratuita de este folleto en caracteres grandes, braille, audio o en formato de lectura fácil. También podemos proporcionar la información en distintos idiomas. No dude en pedirle a alguien que le represente en cualquier conversación con HS2, Ltd.

Français




Merci de nous contacter si vous désirez une copie de cette brochure en grands caractères, en braille, en version audio, ou en lecture simplifiée. Nous pouvons également vous fournir des informations dans différentes langues. Vous pouvez demander d'être représenté(e) par un tiers pour tout échange avec HS2 Ltd.

Bengali

যদি আপনি এই প্রচারপত্রটির বড় অক্ষরে, ব্রেইলে, অডিও বা সহজ পাঠযোগ্য বিনামূল্যের প্রতিলিপি পেতে চান তবে অনুগ্রহ করে আমাদের সাথে যোগাযোগ করুন। এছাড়াও আমরা বিভিন্ন ভাষায় তথ্য প্রদান করতে পারি। এইচএস২ লিমিটেড (HS2 Ltd.)-এর সাথে কোন আলোচনায় আপনাকে প্রতিনিধিত্ব করার জন্য আপনি কাউকে জিজ্ঞাসা করায় আপনাকে স্বাগত জানাই।

Contact Us

Contact our HS2 Helpdesk team all day, every day of the year on:

 Freephone **08081 434 434**
 Minicom **08081 456 472**
 Email **HS2enquiries@hs2.org.uk**

Write to:

FREEPOST

HS2 Community Engagement

Visit us at the former National Temperance Hospital at **112 Hampstead Road, London NW1 2PS.**

Websites: www.hs2.org.uk

www.hs2inCamden.co.uk

Please contact us if you'd like a free copy of this document in large print, Braille, audio or easy read. You can also contact us for help and information in a different language.

HS2 Ltd is committed to protecting personal information. If you wish to know more about how we use your personal information please see our Privacy Notice
<https://www.gov.uk/government/publications/high-speed-two-ltd-privacy-notice>

High Speed Two (HS2) Limited, registered in England and Wales.
Registered office: Two Snowhill, Snow Hill Queensway, Birmingham B4 6GA. Company registration number: 06791686. VAT registration number: 888 8512 56