



Works update notice

Small Dean, Wendover

February 2021 | www.hs2.org.uk

High Speed Two (HS2) is the new high speed railway for Britain. We are continually reviewing the works on our construction sites in line with Government and Public Health England (PHE) advice on dealing with COVID-19. The Government's current strategy makes it clear that construction activity can continue as long as it complies with this guidance. Please be assured that only sites that can operate within the guidelines are operational. All sites will remain under constant review. We have postponed all face-to-face engagement events and meetings and have put in place a number of channels to communicate with communities, such as letters and phone calls, as well as updates and alerts from each of the local community websites. You can sign up for regular updates in your local area at www.hs2inbucksandoxfordshire.co.uk

What are we doing?

As our works continue to progress, we have been acquiring and taking possession of land along the line of route for various site preparation and construction activities.

In the Small Dean area of Wendover, over the coming weeks there will be a variety of activities being undertaken.

There will be a temporary closure to the 1805 footpath from the A413, London Road through to Small Dean Lane. This closure allows us to fence and secure the area of HS2 possessed land while we undertake site preparation work for the Small Dean viaduct, this will include clearing some vegetation in the area. Where vegetation and trees need to be removed it will be undertaken under the guidance of ecologists and arboriculturists.

The work will start from **15th February 2021**.

Some of the site clearance work which is necessary is within close proximity to the existing Chiltern Rail Line, there will be some work completed outside of our core working hours to allow for safe working access in and around the rail line.

Duration of works

Duration of works:

February 15th continuing

Normal working hours:

Monday to Friday

8:00am – 6:00pm

Outside of normal working hours:

7pm – 6am

What to expect

Minor works on or adjacent to the highway

Temporary closure to a public right of way

What we will do

Take care to respect your community and the environment

Respond promptly to any complaints and take appropriate action

Inform you of any changes to the dates we have given

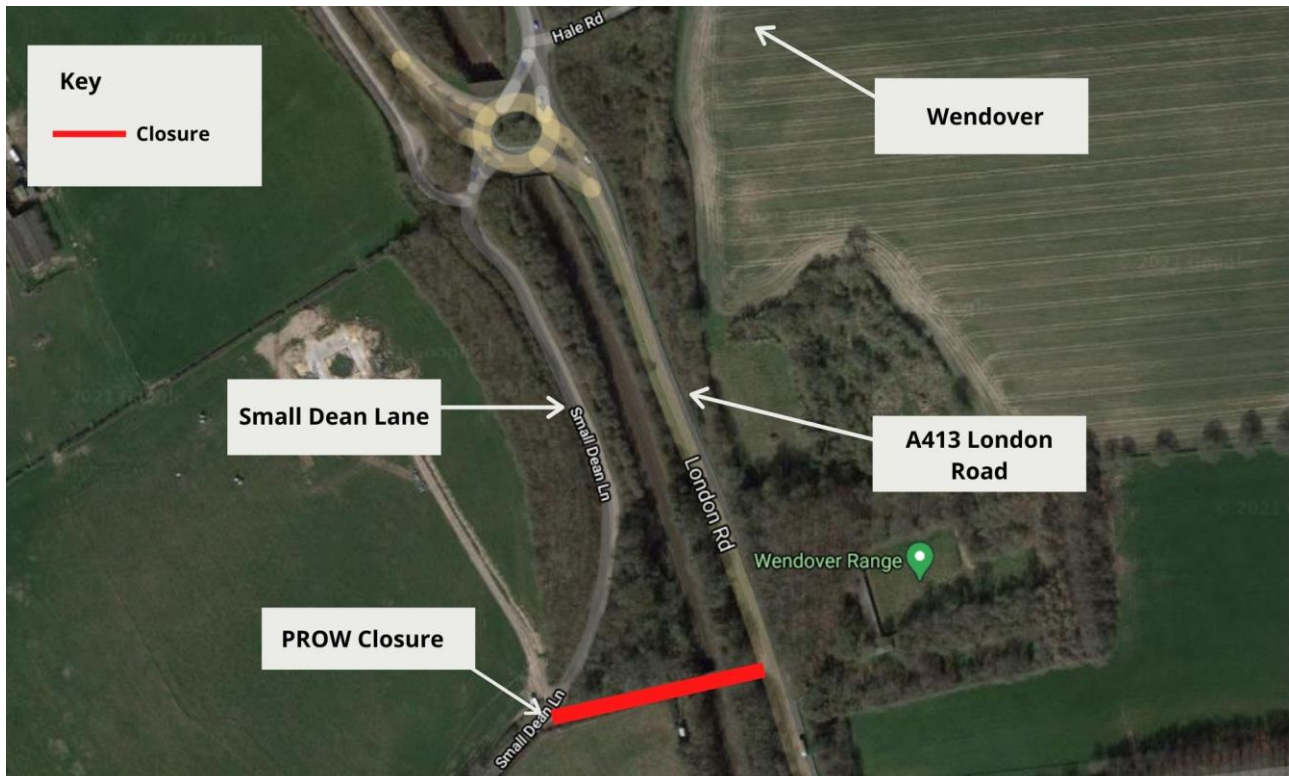
Works update notice

Small Dean, Wendover

Notification



The below map indicates where the closure of the footpath from the A413 to Small Dean Lane will be in place.



What else is happening in the area?

Over the coming months you can expect to see the following activities:

- Set up of satellite compounds off Small Dean Lane and the A413
- From the A413 there will be a bell mouth created to allow for site vehicle access
- Site clearance along parts of the A413 with planned traffic management
- Internal site access road construction
- Preparations for test piling works to support the detailed design of the structure of the viaduct.

If you have a question about HS2 or our works, please contact our HS2 Helpdesk team on 08081 434 434 or email hs2enquiries@hs2.org.uk

Contact our HS2 Helpdesk team on **08081 434 434**

Keeping you informed

We are committed to keeping you informed about work on HS2. This includes ensuring you know what to expect and when to expect it, as well as how we can help.

Residents' Charter and Commissioner

The Residents' Charter is our promise to communicate as clearly as we possibly can with people who live along or near the HS2 route.
www.gov.uk/government/publications/hs2-residents-charter

We also have an independent Residents' Commissioner whose job is to make sure we keep to the promises we make in the Charter and to keep it under constant review. Find reports at:
www.gov.uk/government/collections/hs2-ltd-residents-commissioner

You can contact the Commissioner at:
residentscommissioner@hs2.org.uk

Construction Commissioner

The Construction Commissioner's role is to mediate and monitor the way in which HS2 Ltd manages and responds to construction complaints. You can contact the Construction Commissioner by emailing:
complaints@hs2-cc.org.uk

Property and compensation

You can find out all about HS2 and properties along the line of route by visiting:
www.gov.uk/government/collections/hs2-property
Find out if you're eligible for compensation at:
www.gov.uk/claim-compensation-if-affected-by-hs2

Holding us to account

If you are unhappy for any reason you can make a complaint by contacting our HS2 Helpdesk team. For more details on our complaints process, please visit our website:
www.hs2.org.uk/how-to-complain

Contact Us

Contact our HS2 Helpdesk team all day, every day of the year on:

 Freephone **08081 434 434**

 Minicom **08081 456 472**

 Email **hs2enquiries@hs2.org.uk**

Write to:

FREEPOST

HS2 Community Engagement

Website **www.hs2.org.uk**

To keep up to date with what is happening in your local area, visit:
www.hs2inyourarea.co.uk

Please contact us if you'd like a free copy of this document in large print, Braille, audio or easy read. You can also contact us for help and information in a different language.

HS2 Ltd is committed to protecting personal information. If you wish to know more about how we use your personal information please see our Privacy Notice
<https://www.gov.uk/government/publications/high-speed-two-ltd-privacy-notice>

Reference number:

High Speed Two (HS2) Limited, registered in England and Wales.
Registered office: Two Snowhill, Snow Hill Queensway, Birmingham B4 6GA.
Company registration number: 06791686. VAT registration number: 888 8512 56.