



## Notice of newt and reptile relocation and vegetation clearance

August 2020 | [www.hs2.org.uk](http://www.hs2.org.uk)

High Speed Two (HS2) is the new high speed railway for Britain. We are continually reviewing the works on our construction sites in line with Government and Public Health England advice dealing with COVID-19. The Government's current strategy makes it clear that construction activity can continue as long as it complies with this guidance. Only sites operating within the guidelines are operational. All sites remain under constant review. We have postponed all face-to-face engagement and have put in place various channels to communicate with communities, such as letters, phone calls, local community websites updates. You can sign up for regular updates at [www.hs2inbucksandox.co.uk](http://www.hs2inbucksandox.co.uk).

### What will we be doing

#### Newt and reptile relocation

We have built a number of new habitat sites along the HS2 route that will be populated not just by protected species, but also by a naturally diverse range of plants and animals. Some of the key features that have been put in place are: wildlife ponds with aquatic planting; hibernaculas – places where reptiles can go in the winter; bat boxes; reptile basking banks; planting of wetland and dry grassland; planting of trees.

We have begun moving species locally to their new habitats. You may have seen newt fencing in place in the local area. This consists mainly of plastic membrane which is buried into the ground and supported by stakes. This is to keep the newts in the area to allow our ecologists to collect and move the newts. In addition, we have started the relocation of reptiles.

The collected newts and reptiles are then taken to an ecology approved mitigation site, please see location on map enclosed. This has been prepared for them and is suitable to support the population of newts and reptiles.

**If you have a question about HS2 or our works, please contact our HS2 Helpdesk team on 08081 434 434**

#### Duration of works

Works will start mid August 2020 and last for approx. 8 weeks

#### What to expect

Newt and reptile relocation

Compound set up

Vegetation clearance

Site storage and welfare vehicles

Site manned with 24 hour security and temporary flood lighting

#### What we will do

Manage any impacts, such as traffic and noise with the aim of reducing or removing them

# Notice of newt and reptile relocation and vegetation clearance

Notification



[www.hs2.org.uk](http://www.hs2.org.uk)

## Newt and reptile relocation continued

When the newts move from the breeding pond, they will move towards the newt fence and matting. These are checked daily by experienced ecologists who are accredited under the HS2 Great Crested Newt Licence. The newts are collected and taken to the Bury Farm habitat site, which includes established ponds. The reptiles are taken to either the Bury Farm or Park Hill habitat sites, both located alongside Potter Row.

## Existing pond removal

Once newts have been moved to their new habitat, all vegetation is to be removed from the existing ponds. We have two ponds in your area that require removal for the railway. Each pond will be drained using a pump with suitable filters to prevent any newts being drained with the water. This work will all be carried out under the supervision of an ecologist. A fingertip search for newts will be undertaken and any further newts found during the draining of the pond will be relocated to the Bury Farm habitat site. Once confirmed that there are no newts present, each pond will then be filled in.

## Vegetation Clearance

Further vegetation removal, totalling 1,684 metres of boundary hedgerows, is needed for the future works. This is to avoid ecology returning to the areas required to construct the railway. In this location the work is required to construct the north portal tunnel entrance to the Chiltern tunnel.

The plan in this notification details in orange, areas of field boundary vegetation that are to be cleared. This phased work is undertaken under the supervision of an ecologist, with the initial clearance undertaken to allow a further ecology fingertip search prior to the removal of the remaining vegetation below ground.

The plan in this notification also details areas of further vegetation clearance shown in pink. This vegetation is to be removed during this phase of work. Machinery to undertake this work will access these areas from the A413 access road. All clearance works are undertaken under the instructions of the ecologist on site, who decides the appropriate methods of clearance based on the vegetation present. This involves a detailed hand search to determine if any ecology is present, if it is found that the area is clear then the vegetation clearance will be allowed to take place.

Contact our HS2 Helpdesk team on **08081 434 434**

# Notice of newt and reptile relocation and vegetation clearance

Notification



[www.hs2.org.uk](http://www.hs2.org.uk)

A small workforce will use large machinery and hand-held equipment to clear sections of hedgerows and trees. Vegetation, trees and hedges will be cut down to just above ground level followed by stump removal, this will remove the possibility of ecology returning to this area. All vegetation will be removed from site via the site access road to the A413.

A small amount of site maintenance is required to the south of Frith Hill. This includes grass cutting but no site clearance. This will be accessed off Frith Hill with local traffic management verge warning signage used.

The vegetation clearance will be undertaken in accordance with:

HS2 Organisational European Protected Species Great for Crested Newt Licences WML025. First issued March 2017.

Further details are available online.

<https://www.gov.uk/government/publications/hs2-phase-oneenvironmental-statement-volume-5-ecology>

The work on HS2 is guided by High-Speed Rail (LondonWestMidlands) Act 2017.

<http://www.legislation.gov.uk/ukpga/2017/7/contents/enacted>.

The tree and hedgerow boundary vegetation clearance will be carried out within the areas shown on the map.

## Why are the works taking place now?

We will be starting our main works later in 2020. The ecology and vegetation need to be cleared ahead of this and due to the different ecology seasons we need to start this now.

The High-Speed Rail (London - West Midlands) Act 2017 includes Environmental Minimum Requirements and a Code of Construction Practice which sets out how we undertake our construction activities. This includes analysis of existing ecology and explains how we will mitigate this during our construction.

Substantial ecological survey works have taken place in this area since 2012 as part of the Environmental Statement. Due to the validity of the results, we're required to resurvey every two years. These surveys have provided a detailed understanding of the ecology in the area and allowed us to develop mitigation plans for translocation of the ecology and removing vegetation.

# Notice of newt and reptile relocation and vegetation clearance

Notification



[www.hs2.org.uk](http://www.hs2.org.uk)

## How will you ensure that you do not affect nesting birds and other protected and non-protected ecology?

Prior to any vegetation removal, an ecologist will survey the area to be cleared for ecology and record any findings.

The findings from these surveys, along with data from surveys from the previous five years, are used to identify those areas that can be cleared and those which cannot yet, due to the presence of protected ecology. Any vegetation that cannot be removed due to the presence of protected ecology will be left until further surveys confirm that the ecology is no longer present.

## Bat Surveys

As part of our continuing ecology surveys we will be undertaking bat surveys in the local area ahead of any tree clearance

As bat seasons can differ depending on bat roost type we will be completing the following types of surveys;

Tree climbing – this takes place during the day time, and between the months of May and September. This activity will take place twice for each identified tree.

Dawn surveys - these take place two hours before sunrise and up to 20 minutes after sunrise between May and September.

Dusk surveys – these will take place fifteen minutes before sunset and up to two hours after.

## Installing a work compound

The construction compound is needed as a base for the workforce and for storage of materials. The compound will be 30 metres x 30 metres and located at the top of the existing haul road. Access will be gained via the entrance on the A413 Great Missenden roundabout. Once built the temporary compound will include welfare facilities alongside storage of machinery and materials. Car parking, lighting and 24-hour security and CCTV will also be in place.

# Notice of newt and reptile relocation and vegetation clearance

Notification



[www.hs2.org.uk](http://www.hs2.org.uk)

## How will this affect me?

The works will start mid August 2020 and last for approx. 8 weeks. The compound will be set up using the primary access off the A413. The machinery needed to complete the work will be delivered using this access point, machinery will include excavators, wood chippers and water pumps. All staff and deliveries will use this entrance when they initially travel to site.

A secondary access point will be required off Potter Row, accessed from Frith Hill, this will only be used when access is restricted from the primary access point due to the current overhead power line diversion works. The Potter Row access will only be used for welfare vans, workforce and supervisory visits only to access the vegetation clearance areas. It is expected that there will be up to five small vehicles per day entering from Potter Row when access is not achievable from within the site due to the overhead power line diversion works programme.



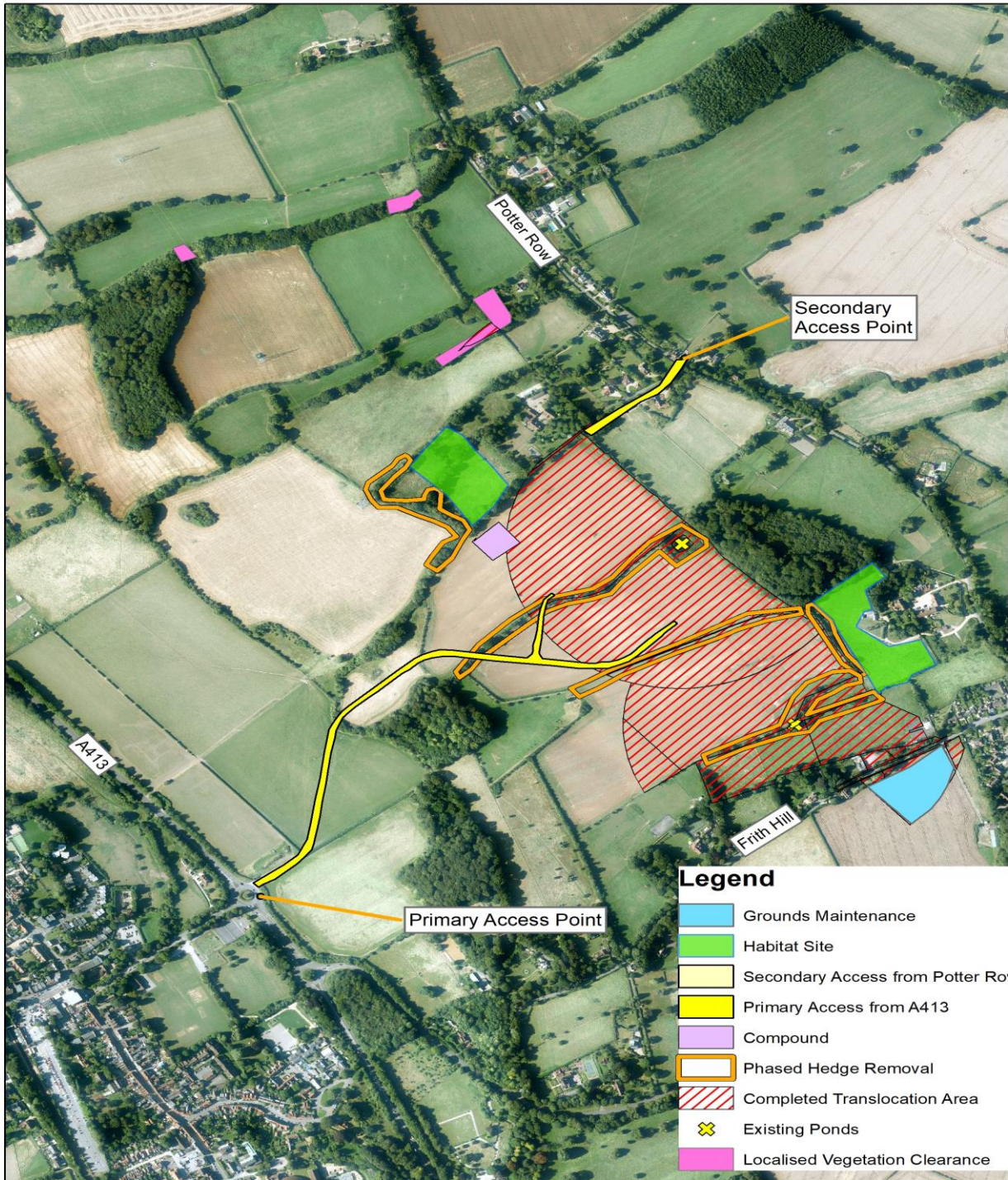
# Notice of newt and reptile relocation and vegetation clearance

Notification



[www.hs2.org.uk](http://www.hs2.org.uk)

## Location of work and access points



Contact our HS2 Helpdesk team on **08081 434 434**

# What else is happening in your area?

[www.hs2.org.uk](http://www.hs2.org.uk)

## Contact our new HS2 Helpdesk team

Our new Helpdesk team is based in our Head Office in Birmingham. This is so that we can provide you with the best service possible. Our team is here to listen and respond to your enquiry, complaint or feedback to help us be a good neighbour.

You can contact our Helpdesk team all day, every day of the year on:

Freephone: **08081 434 434**

Minicom: **08081 456 472**

Email: [hs2enquiries@hs2.org.uk](mailto:hs2enquiries@hs2.org.uk)

## Keep up-to-date with your local community website

To find out more about what's happening in your area and receive regular email updates, you can sign up to our local community websites at: [www.hs2inyourarea.co.uk](http://www.hs2inyourarea.co.uk).

## About our Community and Business Funds

We are offering two funds that are available to local communities and businesses between the West Midlands and London, to help with the disruption caused by our construction work. These are the Community and Environment Fund (CEF) and the Business and Local Economy Fund (BLEF).

The CEF is designed to give communities the opportunity to share in the benefits of HS2. It is an allocated fund that communities are able to apply for, to help to support local projects that aim to improve their local area.

The BLEF is designed to support local economies that may be disrupted by the construction of HS2. BLEF grants are for local business support organisations and local authorities to help maintain business activity in local communities.

For more information about each of these funds, including how to apply, please visit: <https://www.groundwork.org.uk/hs2funds>





# Keeping you informed

We are committed to keeping you informed about work on HS2. This includes ensuring you know what to expect and when to expect it, as well as how we can help.

## Residents' Charter and Commissioner

The Residents' Charter is our promise to communicate as clearly as we possibly can with people who live along or near the HS2 route. [www.gov.uk/government/publications/hs2-residents-charter](http://www.gov.uk/government/publications/hs2-residents-charter)

We also have an independent Residents' Commissioner whose job is to make sure we keep to the promises we make in the Charter and to keep it under constant review. Find reports at: [www.gov.uk/government/collections/hs2-ltd-residents-commissioner](http://www.gov.uk/government/collections/hs2-ltd-residents-commissioner)

You can contact the Commissioner at: [residentscommissioner@hs2.org.uk](mailto:residentscommissioner@hs2.org.uk)

## Construction Commissioner

The Construction Commissioner's role is to mediate and monitor the way in which HS2 Ltd manages and responds to construction complaints. You can contact the Construction Commissioner by emailing: [complaints@hs2-cc.org.uk](mailto:complaints@hs2-cc.org.uk)

## Property and compensation

You can find out all about HS2 and properties along the line of route by visiting: [www.gov.uk/government/collections/hs2-property](http://www.gov.uk/government/collections/hs2-property)  
Find out if you're eligible for compensation at: [www.gov.uk/claim-compensation-if-affected-by-hs2](http://www.gov.uk/claim-compensation-if-affected-by-hs2)

## Holding us to account

If you are unhappy for any reason you can make a complaint by contacting our HS2 Helpdesk team. For more details on our complaints process, please visit our website: [www.hs2.org.uk/how-to-complain](http://www.hs2.org.uk/how-to-complain)

## Contact Us

Contact our HS2 Helpdesk team all day, every day of the year on:

 Freephone **08081 434 434**

 Minicom **08081 456 472**

 Email **[hs2enquiries@hs2.org.uk](mailto:hs2enquiries@hs2.org.uk)**

Write to:

**FREEPOST**

**HS2 Community Engagement**

Website **[www.hs2.org.uk](http://www.hs2.org.uk)**

To keep up to date with what is happening in your local area, visit: **[www.hs2inyourarea.co.uk](http://www.hs2inyourarea.co.uk)**

**Please contact us if you'd like a free copy of this document in large print, Braille, audio or easy read. You can also contact us for help and information in a different language.**

HS2 Ltd is committed to protecting personal information. If you wish to know more about how we use your personal information please see our Privacy Notice <https://www.gov.uk/government/publications/high-speed-two-ltd-privacy-notice>

**Reference number: FUS\_AWN\_0073 HS2-EW-FUS-Ph1-Ar-Ce-C2-Eco-23-10/11/2020**

High Speed Two (HS2) Limited, registered in England and Wales.  
Registered office: Two Snowhill, Snow Hill Queensway, Birmingham B4 6GA. Company registration number: 06791686. VAT registration number: 888 8512 56.