

# Notice of Ground Investigations in Grendon Underwood & Calvert

High Speed Two (HS2) is the new high speed railway for Britain. We are continually reviewing the works on our construction sites in line with Government and Public Health England (PHE) advice on dealing with COVID-19. You can sign up for regular updates in your local area at <https://hs2inbucksandoxfordshire.commonplace.is>

## Who is EKFB?

Eiffage Kier Ferrovial BAM (EKFB) is one of the contractors carrying out civil engineering works for the new HS2 line. EKFB will undertake all earthworks and landscaping in this area as well as creating bridges, viaducts and green tunnels.

## What are we doing?

As part of HS2's preparation works we will be carrying out some Ground Investigations (GI) along a section of bridleway near Grendon Underwood that will be closed for the duration of these investigations (please see enclosed the map detailing the section of route that will be closed and the alternative routes available).

## When will these works take place?

We are looking to start this work from August and are expected to finish mid September. During this time the bridleway will be closed and alternative routes will be available for walkers. These are indicated on the map included in this notice.

## What does the work involve?

Ground investigation surveys will give us more information about the type, strength and details of the land where the new railway will be built. To understand the ground conditions we need to collect a variety of test samples from carefully selected areas of soil.

The processes are explained on the next page.

**If you have a question about HS2 or our works, please contact our HS2 Helpdesk team on 08081 434 434**

## Notification



### Duration of works

August – September

5 week duration of works

Normal working hours:

Monday to Friday  
8.00am – 6.00pm

Weekends

8.00am – 4.00pm

Our contractors may be on site for one hour's start-up and shutdown either side of these times.

### What to expect

Varied activities with both quiet and busier periods.

Closure of bridleway

Agreed routes will be used by a small number of HGVs and vehicles. A lot of equipment will be moved by local farm tractors and trailers.

### What we will do

Manage any environmental impacts, such as traffic and noise.

Inform you of any changes to the provided dates.

Respond promptly to any complaints and take appropriate action.

# Notice of Ground Investigations

[www.hs2.org.uk](http://www.hs2.org.uk)

## What does the work involve?

- **Rotary drilling** – this is a tracked machine that allows us to drill conventionally to any depth. Samples will be taken as we drill through the rock. The drill will be lubricated with either water, air or mud throughout the process. The drilling machines we use are the same size as a small excavator.
- **Cable percussion drilling** – uses a winch that lifts and drops a cutting head into the borehole, which normally will stop 25 metres below ground surface. The drill is lubricated using water. The team will continue to take samples as they drill through the rock.
- **Continuous surface wave** – this is a non-intrusive test where a grid is set on the surface and sound waves are sent out and the results are then recorded.
- **Trial pitting** – using an excavator to dig a pit approximately 4 metres deep and take samples. Sometimes there is a need to dig a trial trench, which will be 4 metres deep and 10 metres in length, taking samples as we go. The pits are then back filled on completion of sampling.

Notification



Example of Ground Investigation works



Example of trial boring that make up part of the ground investigation work



# Notice of Ground Investigations

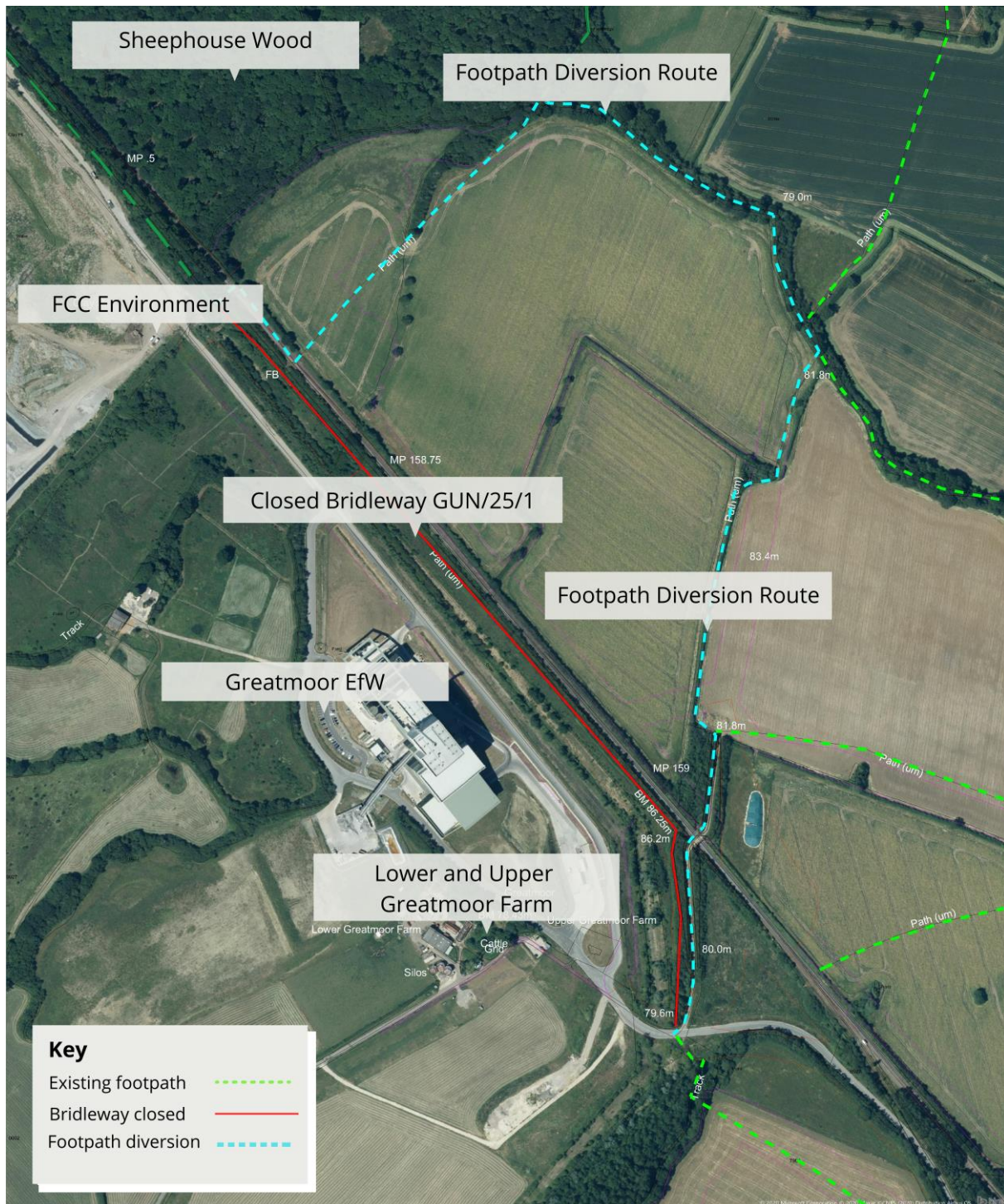
Notification



[www.hs2.org.uk](http://www.hs2.org.uk)

## Where will the works take place?

The following map shows the part of the bridgeway that is closed and the diversion route for walkers only.



Contact our HS2 Helpdesk team on **08081 434 434**

# Keeping you informed

We are committed to keeping you informed about work on HS2. This includes ensuring you know what to expect and when to expect it, as well as how we can help.

## Residents' Charter and Commissioner

The Residents' Charter is our promise to communicate as clearly as we possibly can with people who live along or near the HS2 route.

[www.gov.uk/government/publications/hs2-residents-charter](http://www.gov.uk/government/publications/hs2-residents-charter)

We also have an independent Residents' Commissioner whose job is to make sure we keep to the promises we make in the Charter and to keep it under constant review. Find reports at:

[www.gov.uk/government/collections/hs2-ltd-residents-commissioner](http://www.gov.uk/government/collections/hs2-ltd-residents-commissioner)

You can contact the Commissioner at:  
[residentscommissioner@hs2.org.uk](mailto:residentscommissioner@hs2.org.uk)

## Construction Commissioner

The Construction Commissioner's role is to mediate and monitor the way in which HS2 Ltd manages and responds to construction complaints. You can contact the Construction Commissioner by emailing:  
[complaints@hs2-cc.org.uk](mailto:complaints@hs2-cc.org.uk)

## Property and compensation

You can find out all about HS2 and properties along the line of route by visiting:

[www.gov.uk/government/collections/hs2-property](http://www.gov.uk/government/collections/hs2-property)

Find out if you're eligible for compensation at:

[www.gov.uk/claim-compensation-if-affected-by-hs2](http://www.gov.uk/claim-compensation-if-affected-by-hs2)

## Holding us to account

If you are unhappy for any reason you can make a complaint by contacting our HS2 Helpdesk team. For more details on our complaints process, please visit our website:

[www.hs2.org.uk/how-to-complain](http://www.hs2.org.uk/how-to-complain)

## Contact Us

Contact our HS2 Helpdesk team all day, every day of the year on:

 Freephone **08081 434 434**

 Minicom **08081 456 472**

 Email **[hs2enquiries@hs2.org.uk](mailto:hs2enquiries@hs2.org.uk)**

Write to:

**FREEPOST**

**HS2 Community Engagement**

Website **[www.hs2.org.uk](http://www.hs2.org.uk)**

To keep up to date with what is happening in your local area, visit:  
**[www.hs2inyourarea.co.uk](http://www.hs2inyourarea.co.uk)**

**Please contact us if you'd like a free copy of this document in large print, Braille, audio or easy read. You can also contact us for help and information in a different language.**

HS2 Ltd is committed to protecting personal information. If you wish to know more about how we use your personal information please see our Privacy Notice  
<https://www.gov.uk/government/publications/high-speed-two-ltd-privacy-notice>

**Reference number: 1MC06-CEK-SE-NTE-CS06\_CL09-000001**

High Speed Two (HS2) Limited, registered in England and Wales.

Registered office: Two Snowhill, Snow Hill Queensway, Birmingham B4 6GA.

Company registration number: 06791686. VAT registration number: 888 8512 56.