

## Notice of planting works, Barton Hartshorn

December 2020 | [www.hs2.org.uk](http://www.hs2.org.uk)

High Speed Two (HS2) is the new high speed railway for Britain. In response to the Covid-19 virus we have worked hard to ensure that our working practices are fully aligned with the Site Operating Procedures produced by the Construction Leadership Council and in line with Government and Public Health England advice. We will be keeping our local website [www.hs2inbucksandox.co.uk](http://www.hs2inbucksandox.co.uk) up to date with information on our works, and the measures we have in place to maintain the safety.

Please be assured that only sites that can operate within the guidelines are operational. All sites will remain under constant review. We have postponed all face-to-face engagement events and meetings and have put in place a number of channels to communicate with communities, such as letters and phone calls, as well as updates and alerts from each of the local community websites. You can sign up for regular updates in your local area at [hs2inbucksandox.co.uk](http://hs2inbucksandox.co.uk)

### What will we be doing?

As part of our continuing works ahead of the construction of the railway we need to undertake some planting works in your area. These works are necessary to prepare the area ahead of the main construction work.

### Planting

The planting will be a mixture of native local species, such as the Midlands Hawthorn and the Black Poplar. Please refer to the attached map for the location of the planting works.

The Public Right of Way will remain open for the duration of the works, however planting activity will take place either side of the path. If access is required across the path our work will be postponed to allow the public to safely pass along the right of way.

**If you have a question about HS2 or our works, please contact our HS2 Helpdesk team on 08081 434 434 or email [hs2enquiries@hs2.org.uk](mailto:hs2enquiries@hs2.org.uk)**

### Notification



#### Duration of works

The works will start mid-January 2021 and will continue for 2 weeks

Normal working hours  
Monday to Friday 8am to 6pm and Saturday 8am - 1pm. We may also be on site for one hour's start up and shutdown outside of these times

#### What to expect

Some additional traffic on local roads and noise from equipment. Some equipment will be stored at Fimere Station. Our team will work from mobile welfare vans at the planting site.

#### What we will do

Manage any impacts, such as traffic and noise with the aim of reducing or removing them

# Notice of planting works, Barton Hartshorn

Notification



[www.hs2.org.uk](http://www.hs2.org.uk)

## How will we access our site?

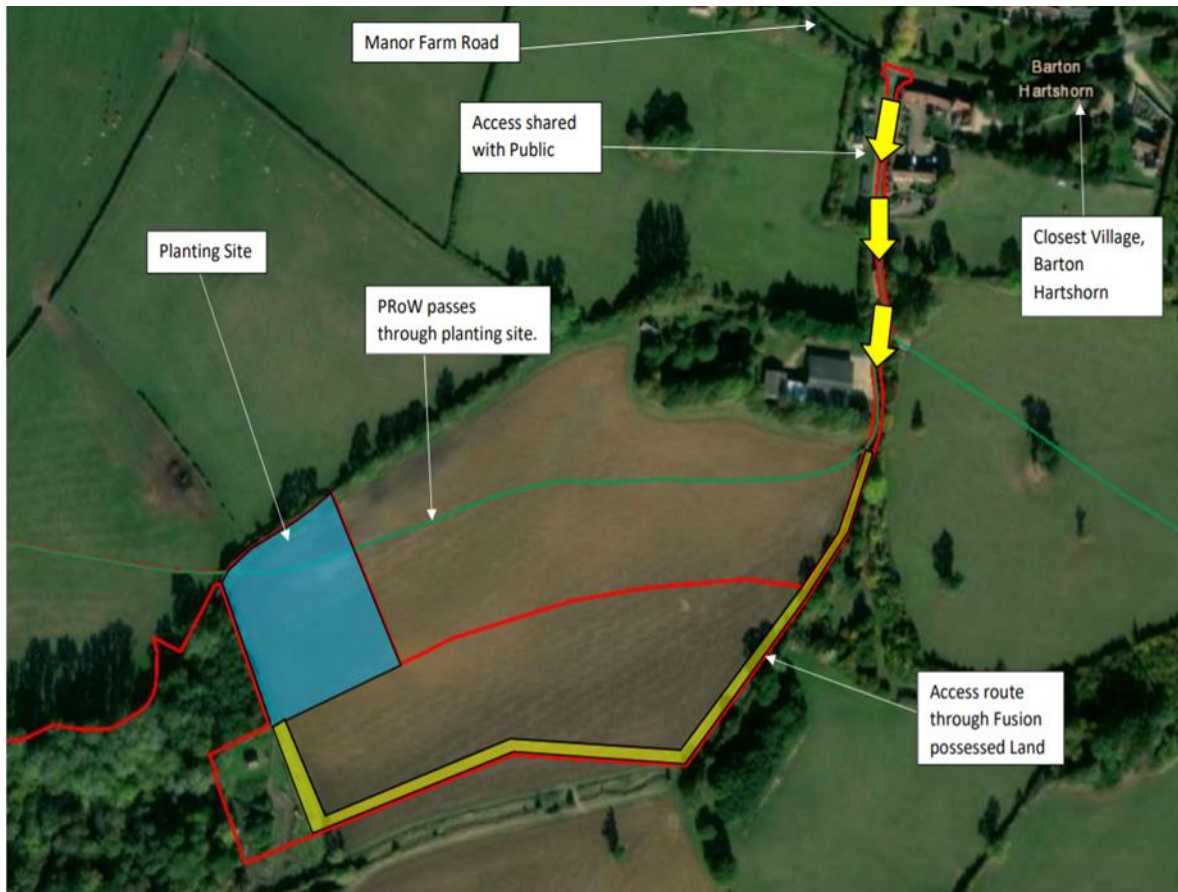
To gain entrance into the works area, access will be managed via Manor Farm Road into Manor Farm. The site team will be using mobile welfare facilities located at the planting site. The small compound at Finmere Station will be used to store some equipment with a small welfare facility. Operatives will work from mobile welfare vans at the planting site.

## How will this affect me?

There may be some noise from the machinery. This will be restricted to running between the hours of 8am to 6pm Monday to Friday and Saturday 8am - 1pm (if required). We may also be on site for one hour's start up and shutdown outside of these times. There may be occasional weekend working outside of these times subject to local authority consent. Updates will be shared on [www.hs2inbucksandbox.co.uk](http://www.hs2inbucksandbox.co.uk).

We will continue working to reduce the impact caused by our works as much as reasonably practicable. If you have any further queries do not hesitate to get back in touch with the HS2 Helpdesk.

**Please see below map showing area of planting and access route.**



Contact our HS2 Helpdesk team on **08081 434 434**

# What else is happening in your area?

[www.hs2.org.uk](http://www.hs2.org.uk)

## About our Community and Business Funds

We are offering two funds that are available to local communities and businesses between Birmingham and the West Midlands, to help with the disruption caused by our construction work. These are the Community and Environment Fund (CEF) and the Business and Local Economy Fund (BLEF).

The CEF is designed to give communities the opportunity to share in the benefits of HS2. It is an allocated fund that communities are able to apply for, to help to support local projects that aim to improve their local area.

The BLEF is designed to support local economies that may be disrupted by the construction of HS2. BLEF grants are for local business support organisations and local authorities to help maintain business activity in local communities.

For more information about each of these funds, including how to apply, please visit: <https://www.groundwork.org.uk/hs2funds>



## About our Commonplace websites

The planning and construction of HS2 is a huge operation – it is currently the largest infrastructure project in Europe.

It's important to us that you are kept up to date about the progress of the Project and any work that may impact you or your community. We have a series of community-focused websites where you can find out what is happening in your local area and sign up for updates about our activities.

Our Commonplace sites currently serve Birmingham, Bucks and Oxfordshire, Cheshire, Euston and Camden, Hertfordshire, Hillingdon, Northamptonshire, Old Oak, Solihull, Staffordshire and Warwickshire. More sites are being prepared to serve other areas.

To find your local Commonplace website, visit:  
<https://hs2.commonplace.is/>

For further information about Phase 2a and Phase 2b, visit :  
<https://www.gov.uk/government/organisations/high-speed-two-limited>



# Keeping you informed

We are committed to keeping you informed about work on HS2. This includes ensuring you know what to expect and when to expect it, as well as how we can help.

## Residents' Charter and Commissioner

The Residents' Charter is our promise to communicate as clearly as we possibly can with people who live along or near the HS2 route.  
[www.gov.uk/government/publications/hs2-residents-charter](http://www.gov.uk/government/publications/hs2-residents-charter)

We also have an independent Residents' Commissioner whose job is to make sure we keep to the promises we make in the Charter and to keep it under constant review. Find reports at:  
[www.gov.uk/government/collections/hs2-ltd-residents-commissioner](http://www.gov.uk/government/collections/hs2-ltd-residents-commissioner)

You can contact the Commissioner at:  
[residentscommissioner@hs2.org.uk](mailto:residentscommissioner@hs2.org.uk)

## Construction Commissioner

The Construction Commissioner's role is to mediate and monitor the way in which HS2 Ltd manages and responds to construction complaints. You can contact the Construction Commissioner by emailing:  
[complaints@hs2-cc.org.uk](mailto:complaints@hs2-cc.org.uk)

## Property and compensation

You can find out all about HS2 and properties along the line of route by visiting:  
[www.gov.uk/government/collections/hs2-property](http://www.gov.uk/government/collections/hs2-property)  
Find out if you're eligible for compensation at:  
[www.gov.uk/claim-compensation-if-affected-by-hs2](http://www.gov.uk/claim-compensation-if-affected-by-hs2)

## Holding us to account

If you are unhappy for any reason you can make a complaint by contacting our HS2 Helpdesk team. For more details on our complaints process, please visit our website:  
[www.hs2.org.uk/how-to-complain](http://www.hs2.org.uk/how-to-complain)

## Contact Us

Contact our HS2 Helpdesk team all day, every day of the year on:

 Freephone **08081 434 434**

 Minicom **08081 456 472**

 Email **[hs2enquiries@hs2.org.uk](mailto:hs2enquiries@hs2.org.uk)**

Write to:

**FREEPOST**

**HS2 Community Engagement**

Website **[www.hs2.org.uk](http://www.hs2.org.uk)**

To keep up to date with what is happening in your local area, visit:  
**[www.hs2inyourarea.co.uk](http://www.hs2inyourarea.co.uk)**

**Please contact us if you'd like a free copy of this document in large print, Braille, audio or easy read. You can also contact us for help and information in a different language.**

HS2 Ltd is committed to protecting personal information. If you wish to know more about how we use your personal information please see our Privacy Notice  
<https://www.gov.uk/government/publications/high-speed-two-ltd-privacy-notice>

**Reference number: FUS\_AWN\_0159 HS2-EW-Fusion -Ph1-Ar-Ce-C2-Eco-13-12/09/2020**

High Speed Two (HS2) Limited, registered in England and Wales.  
Registered office: Two Snowhill, Snow Hill Queensway, Birmingham B4 6GA.  
Company registration number: 06791686. VAT registration number: 888 8512 56.