

Chetwode Ecology and clearance works

September 2020 | www.hs2.org.uk

High Speed Two (HS2) is the new high speed railway for Britain. We are continually reviewing the works on our construction sites in line with Government and Public Health England (PHE) advice on dealing with COVID-19. The Government's current strategy makes it clear that construction activity can continue as long as it complies with this guidance.

Please be assured that only sites that can operate within the guidelines are operational. All sites will remain under constant review. We have postponed all face-to-face engagement events and meetings and have put in place a number of channels to communicate with communities, such as letters and phone calls, as well as updates and alerts from each of the local community websites. You can sign up for regular updates in your local area at www.hs2inbucksandox.co.uk

What will we be doing?

As part of our continuing works ahead of the construction of the railway we need to undertake some further work in your area., These works will consist of:

- Construction of a small compound near to Moat Farm
- Hedgerow clearance
- Reptile fencing
- Ecology translocation
- Archaeological investigations

The site will be accessed by points shown on the map below. These works will start in September 2020 and be completed by mid-December 2020.

If you have a question about HS2 or our works, please contact our HS2 Helpdesk team on 08081 434 434 or email hs2enquiries@hs2.org.uk

Notification



Duration of works

The works will start in September 2020 and be completed by mid-December 2020

Normal working hours Monday to Friday 8am to 6pm. and Saturday 8am - 1pm. We may also be on site for one hour's start up and shutdown outside of these times

What to expect

Some additional traffic on local roads. Some noise from equipment used for the works. Site storage and welfare vehicles. Site operated with 24 hour security and temporary flood lighting

What we will do

Manage any impacts, such as traffic and noise with the aim of reducing or removing them

Chetwode Ecology and clearance works

www.hs2.org.uk

Notification



What is a construction compound?

The small temporary construction compound will be established to support the works taking place for the remainder of this year. This will enable the subsequent installation of the reptile fencing in order to capture and translocate the reptile population. To build the compound we will initially use mobile welfare facilities. Once built the small compound will include temporary trackway, office and welfare facilities alongside the storage of machinery and materials. Car parking and 24-hour security will also be in place. Over the coming months, the site compound will also be used by Fusion's contractors undertaking the archaeology investigations to enable construction work for the railway.

What will be doing?

The works we are going to undertake are described below and referenced on the attached plan.

Vegetation and hedgerow clearance

Before any vegetation is cleared it will be thoroughly inspected by qualified ecologists. Any protected species found to be present will be recorded and no vegetation will be cleared until the species have left the site. Extensive ecological and tree surveys have been undertaken in the area ahead of these works. Mitigation of impact on protected species have been assessed and plans established. There will be no clearance of ancient woodland.

The vegetation clearance will be undertaken in accordance with:

- HS2 Organisational European Protected Species Great for Crested Newt Licences WML025. First issued March 2017.
- HS2 Organisational European Protected Species Licence for Badger WML024. . First issued February 2018.

Further details are available online.

<https://www.gov.uk/government/publications/hs2-phase-one-environmental-statement-volume-5-ecology>

- The work on HS2 is guided by High-Speed Rail (LondonWestMidlands) Act 2017.

<http://www.legislation.gov.uk/ukpga/2017/7/contents/enacted>

This clearance work will be completed by a small workforce who will use machinery and hand-held equipment to clear sections of hedgerows and trees to enable the construction access to take place. The vegetation clearance will be carried out within the areas (red) shown on the enclosed map.

Chetwode Ecology and clearance works

www.hs2.org.uk

Notification



Installation of reptile fencing and newt trapping

In the area near to Moat Farm we need to install reptile fencing. Reptile fencing consists mainly of plastic membrane which is buried into the ground and supported by stakes. This is to prevent the species entering the work area.

We will move the newts from an area scheduled for future works to a new habitat site. Ecologists use pit fall traps and mats which are set along the line of the fencing.

When the newts move from the breeding pond, they move towards the line of the fence until they either fall into the trap or hide under a mat. All traps and mats are checked daily by experienced ecologists who are accredited under the HS2 Great Crested Newt Licence.

Collected species are then taken to an ecology approved mitigation site that has been prepared for them and is suitable to support the population of newts (i.e. suitable aquatic vegetation and bankside vegetation).

Clearance and maintenance of hedgerows

Vegetation removal is required to avoid ecology returning to the areas required to construct the railway. Areas that have been cleared will be maintained in a condition that makes it unsuitable for species to return. The area will be hand searched by an ecologist then reduced down and then maintained at 15 centimetres above ground level.

Archaeological investigations

As part of HS2's continued programme of archaeology surveying works in your local area we have already carried out geophysical surveys to identify areas of possible archaeological interest. The next steps of our archaeological investigation work will involve excavating trenches and recording any finds.

We will begin archaeological investigations within the area shown on the map. These works will enable a greater understanding of archaeology in the area. This will require the excavation of number of trial trenches. Once the work is complete, the trenches will be backfilled.

Chetwode Ecology and clearance works

www.hs2.org.uk

Notification



What will we be doing? (continued)

These archaeological works are planned to start in November 2020 and will be completed by mid-December 2020. The digging and investigations will be done by teams of five workers using a mechanical excavator. There will be a maximum of two teams on site and a small number of supervision staff visiting site to ensure the work is progressing to plan and is being done safely.

The compound shown on the map below will be used by the archaeological teams to undertake their work.

Our access will be off Preston Bissett Road leading into site. Temporary verge access signage will be installed on the highway verge approaching the entrance to the site. These will be on standard signage A-Frames and secured with ballasted sandbags which will be placed on the roadside verges. These will be in place for the duration of the work.

Traffic Management

Minimal traffic management will be required to enable vehicle access into the works areas from the public highway. See map below for exact location, signs will be erected to highlight work vehicles entering/exiting the site. Vehicles re-joining the highway will be cleaned to avoid mud being deposited on the road surface.

How may this affect you?

There may be some noise from the machinery. This will be restricted to running between the hours of 8am to 6pm Monday to Friday and Saturday 8am - 1pm. We may also be on site for one hour's start up and shutdown outside of these times. There may be occasional weekend working outside of these times subject to local authority consent. Updates will be shared on www.hs2inbucksandbox.co.uk.

We will be working hard to ensure any impacts on residents are kept to a minimum during these and all our future works. You may notice extra traffic on the road immediately around the sites with workers moving to and from the site, and occasional delivery vehicles.

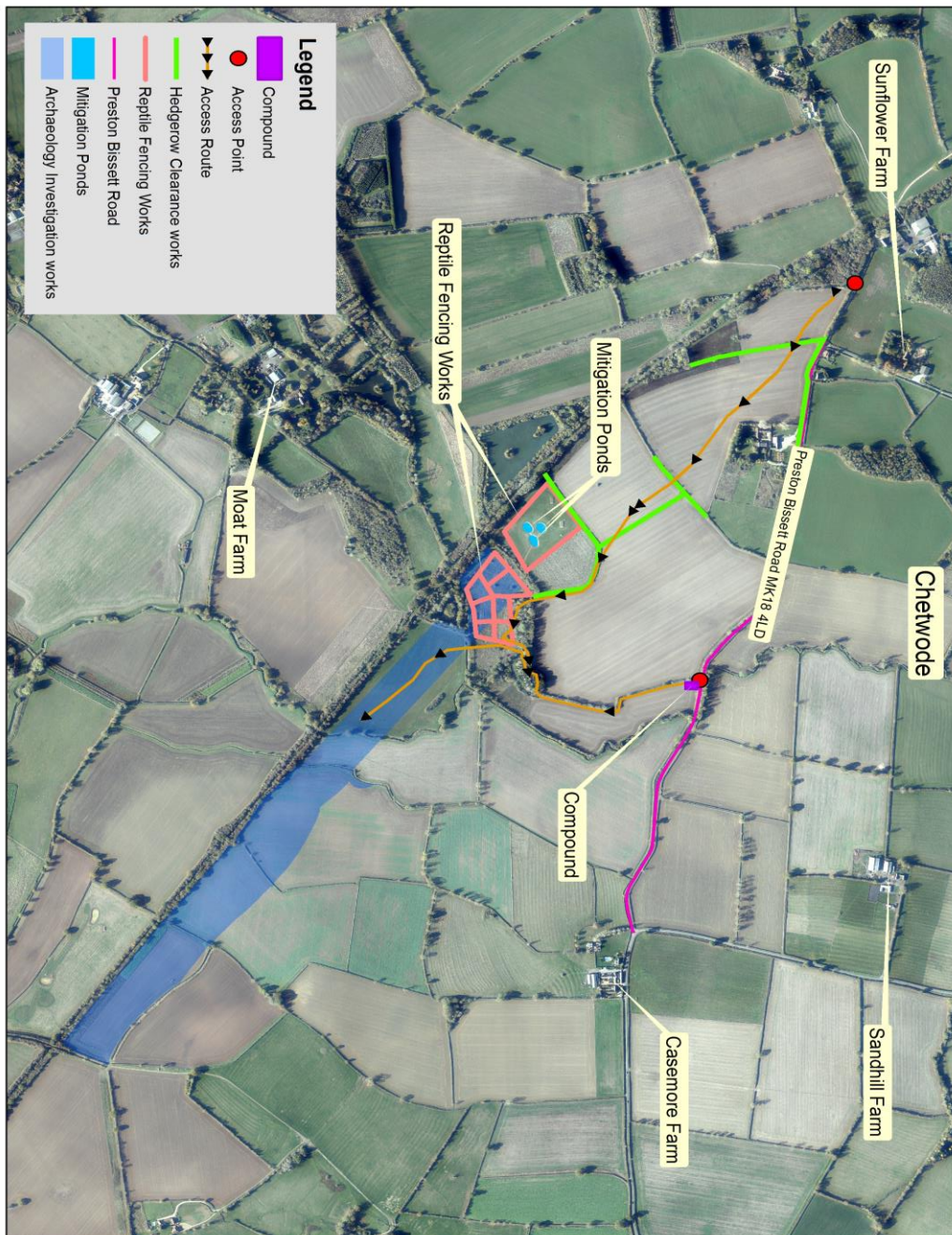
Chetwode Ecology and clearance works

Notification



www.hs2.org.uk

Location of works consisting of compound set up and access points



Contact our HS2 Helpdesk team on **08081 434 434**

Keeping you informed

We are committed to keeping you informed about work on HS2. This includes ensuring you know what to expect and when to expect it, as well as how we can help.

Residents' Charter and Commissioner

The Residents' Charter is our promise to communicate as clearly as we possibly can with people who live along or near the HS2 route.
www.gov.uk/government/publications/hs2-residents-charter

We also have an independent Residents' Commissioner whose job is to make sure we keep to the promises we make in the Charter and to keep it under constant review. Find reports at:
www.gov.uk/government/collections/hs2-ltd-residents-commissioner

You can contact the Commissioner at:
residentscommissioner@hs2.org.uk

Construction Commissioner

The Construction Commissioner's role is to mediate and monitor the way in which HS2 Ltd manages and responds to construction complaints. You can contact the Construction Commissioner by emailing:
complaints@hs2-cc.org.uk

Property and compensation

You can find out all about HS2 and properties along the line of route by visiting:
www.gov.uk/government/collections/hs2-property
Find out if you're eligible for compensation at:
www.gov.uk/claim-compensation-if-affected-by-hs2

Holding us to account

If you are unhappy for any reason you can make a complaint by contacting our HS2 Helpdesk team. For more details on our complaints process, please visit our website:
www.hs2.org.uk/how-to-complain

Contact Us

Contact our HS2 Helpdesk team all day, every day of the year on:

 Freephone **08081 434 434**

 Minicom **08081 456 472**

 Email **hs2enquiries@hs2.org.uk**

Write to:

FREEPOST

HS2 Community Engagement

Website **www.hs2.org.uk**

To keep up to date with what is happening in your local area, visit:
www.hs2inyourarea.co.uk

Please contact us if you'd like a free copy of this document in large print, Braille, audio or easy read. You can also contact us for help and information in a different language.

HS2 Ltd is committed to protecting personal information. If you wish to know more about how we use your personal information please see our Privacy Notice
<https://www.gov.uk/government/publications/high-speed-two-ltd-privacy-notice>

Reference number: FUS_AWN_0114 HS2-EW-FUS-Ph1-Ar-Ce-C1-La-Vis-43-04/09/2020

High Speed Two (HS2) Limited, registered in England and Wales.
Registered office: Two Snowhill, Snow Hill Queensway, Birmingham B4 6GA.
Company registration number: 06791686. VAT registration number: 888 8512 56.