

Notice of works in Mixbury

August 2020 | www.hs2.org.uk

Notification



High Speed Two (HS2) is the new high speed railway for Britain. We are continually reviewing the works on our construction sites in line with Government and Public Health England (PHE) advice on dealing with COVID-19. The Government's current strategy makes it clear that construction activity can continue as long as it complies with this guidance.

Please be assured that only sites that can operate within the guidelines are operational. All sites will remain under constant review. We have postponed all face-to-face engagement events and meetings and have put in place a number of channels to communicate with communities, such as letters and phone calls, as well as updates and alerts from each of the local community websites. You can sign up for regular updates in your local area at www.hs2inbucksandox.co.uk

What we will be doing?

As part of our continuing works ahead of the construction of the railway we need to undertake some further work in your area, these works will consist of:

- Set up a site compound with traffic signage
- Boundary Fencing
- Ecology Surveys
- Grass and shrub maintenance
- Archaeology

Site compound

A site compound will be set up off Featherbed Lane to accommodate the works. The compound will be used for welfare vehicles, staff car parking and the site storage of machinery and materials for the workforce completing all the works. The site will be secured with 24/7 security and have temporary low-level lighting.

If you have a question about HS2 or our works, please contact our HS2 Helpdesk team on 08081 434 434 or email hs2enquiries@hs2.org.uk

Duration of works

The works will start in mid August 2020 and will be completed by end November 2020

Normal working hours
Monday to Friday 8am to 6pm. and Saturday 8am - 1pm. We may also be on site for one hour's start up and shutdown outside of these times

What to expect

Some additional traffic on local roads. Some noise from equipment used for the works. Site storage and welfare vehicles. Site operated with 24hour security and temporary flood lighting

What we will do

Manage any impacts, such as traffic and noise with the aim of reducing or removing them

Notice of works in Mixbury

Notification



www.hs2.org.uk

How will we be accessing the site?

Access to the site will be off the A421 and Featherbed Lane. Temporary verge access signage will be installed on the highway verge approaching the entrance to the site along this route. These will be on standard signage A-Frames and secured with ballasted sandbags which will be placed on the roadside verges. These will be in place for the duration of the works.

Installing boundary fencing.

The programme of fencing installation work will continue around land that has been possessed.

Ecology surveys

We are carrying on with our ecology surveys looking for species such as great crested newts, reptiles, bats and owls. Based on these results and previous surveys we will then begin our mitigation works. This will involve new bat and owl roosts and translocation works to one of the local habitat mitigation sites later in the year. These habitat sites have been carefully constructed and maintained to ensure they are suitable for the wildlife which will be relocated there.

Grass and shrub maintenance

Grass and hedgerow maintenance works are undertaken under the instructions of the ecologist on site, who decides the appropriate methods based on the vegetation present. This involves a detailed hand search to determine if any ecology is present. If it is found that the area is clear of ecology, then the works will be allowed to take place. A small workforce will use machinery and hand-held equipment to maintain sections of grass and hedgerows. Grass will be cut down to 15 centimetres above ground. Hedges will only be removed if required for the access route around the site.

The vegetation clearance will be undertaken in accordance with:

- HS2 Organisational European Protected Species Great for Crested Newt Licences WML025. First issued March 2017.
- HS2 Organisational European Protected Species Licence for Badger WML024. First issued February 2018.

Notice of works in Mixbury

Notification



www.hs2.org.uk

Grass and shrub maintenance continued

Further details are available online.

<https://www.gov.uk/government/publications/hs2-phase-one-environmental-statement-volume-5-ecology>

- The work on HS2 is guided by High-Speed Rail (London West Midlands) Act 2017.

<http://www.legislation.gov.uk/ukpga/2017/7/contents/enacted>

Archaeology

As part of HS2's continued programme of surveying works in your local area we have already carried out geophysical surveys to identify areas of possible archaeological interest. The next steps of our archaeological investigation work will involve excavating trenches and recording any finds.

We will begin our archaeological investigations in the areas shown in red on the map. These works are planned to start late August 2020 and will be completed by late October 2020. These works will enable a greater understanding of significant archaeology in the area. This will require the excavation of a number of trial trenches. Once the work is complete, the trenches will be backfilled.

The digging and investigations are carried out by Fusion's archaeology subcontractor with supervision staff visiting the site to ensure the works are progressing safely.

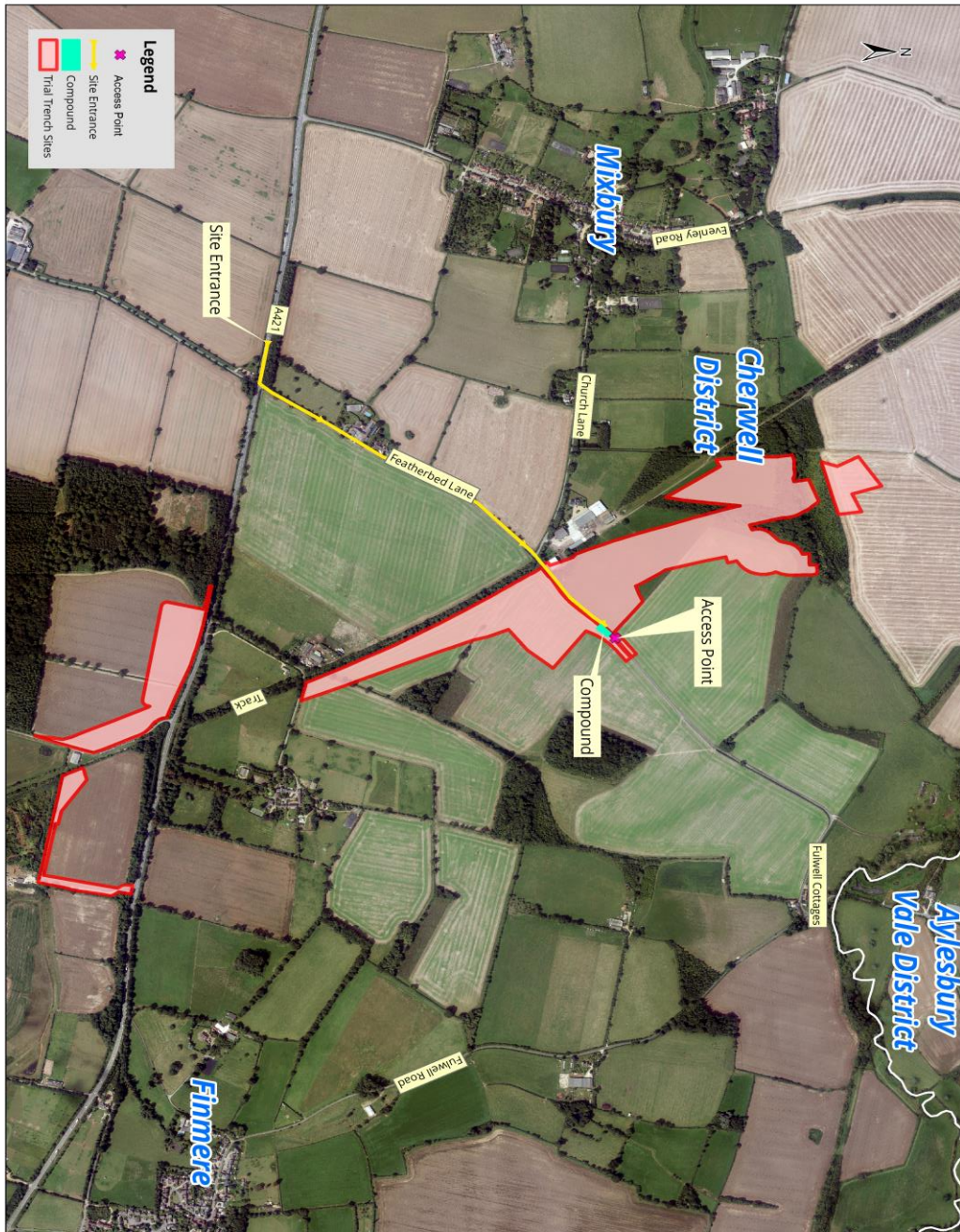
Notice of works in Mixbury

Notification



www.hs2.org.uk

Location of compound and archaeology



Contact our HS2 Helpdesk team on **08081 434 434**

What else is happening in your area?

www.hs2.org.uk

Contact our new HS2 Helpdesk team

Our new Helpdesk team is based in our Head Office in Birmingham. This is so that we can provide you with the best service possible. Our team is here to listen and respond to your enquiry, complaint or feedback to help us be a good neighbour.

You can contact our Helpdesk team all day, every day of the year on:

Freephone: **08081 434 434**

Minicom: **08081 456 472**

Email: hs2enquiries@hs2.org.uk

Keep up-to-date with your local community website

To find out more about what's happening in your area and receive regular email updates, you can sign up to our local community websites at: www.hs2inyourarea.co.uk.

About our Community and Business Funds

We are offering two funds that are available to local communities and businesses between the West Midlands and London, to help with the disruption caused by our construction work. These are the Community and Environment Fund (CEF) and the Business and Local Economy Fund (BLEF).

The CEF is designed to give communities the opportunity to share in the benefits of HS2. It is an allocated fund that communities are able to apply for, to help to support local projects that aim to improve their local area.

The BLEF is designed to support local economies that may be disrupted by the construction of HS2. BLEF grants are for local business support organisations and local authorities to help maintain business activity in local communities.

For more information about each of these funds, including how to apply, please visit: <https://www.groundwork.org.uk/hs2funds>



Contact our HS2 Helpdesk team on **08081 434 434**

Keeping you informed

We are committed to keeping you informed about work on HS2. This includes ensuring you know what to expect and when to expect it, as well as how we can help.

Residents' Charter and Commissioner

The Residents' Charter is our promise to communicate as clearly as we possibly can with people who live along or near the HS2 route.
www.gov.uk/government/publications/hs2-residents-charter

We also have an independent Residents' Commissioner whose job is to make sure we keep to the promises we make in the Charter and to keep it under constant review. Find reports at:
www.gov.uk/government/collections/hs2-ltd-residents-commissioner

You can contact the Commissioner at:
residentscommissioner@hs2.org.uk

Construction Commissioner

The Construction Commissioner's role is to mediate and monitor the way in which HS2 Ltd manages and responds to construction complaints. You can contact the Construction Commissioner by emailing:
complaints@hs2-cc.org.uk

Property and compensation

You can find out all about HS2 and properties along the line of route by visiting:
www.gov.uk/government/collections/hs2-property
Find out if you're eligible for compensation at:
www.gov.uk/claim-compensation-if-affected-by-hs2

Holding us to account

If you are unhappy for any reason you can make a complaint by contacting our HS2 Helpdesk team. For more details on our complaints process, please visit our website:
www.hs2.org.uk/how-to-complain

Contact Us

Contact our HS2 Helpdesk team all day, every day of the year on:

 Freephone **08081 434 434**

 Minicom **08081 456 472**

 Email **hs2enquiries@hs2.org.uk**

Write to:

FREEPOST

HS2 Community Engagement

Website **www.hs2.org.uk**

To keep up to date with what is happening in your local area, visit:
www.hs2inyourarea.co.uk

Please contact us if you'd like a free copy of this document in large print, Braille, audio or easy read. You can also contact us for help and information in a different language.

HS2 Ltd is committed to protecting personal information. If you wish to know more about how we use your personal information please see our Privacy Notice
<https://www.gov.uk/government/publications/high-speed-two-ltd-privacy-notice>

Reference number: FUS_AWN_0097

HS2-EW-FUS-Ph1-Ar-Ce-C2-Prog-works-16-22/07/2020

High Speed Two (HS2) Limited, registered in England and Wales.
Registered office: Two Snowhill, Snow Hill Queensway, Birmingham B4 6GA.
Company registration number: 06791686. VAT registration number: 888 8512 56.