

Notice of compounds set up, ecology works and trial trench evaluations, Twyford

July 2020 | www.hs2.org.uk

High Speed Two (HS2) is the new high speed railway for Britain. We are continually reviewing the works on our construction sites in line with Government and Public Health England (PHE) advice on dealing with COVID-19. The Government's current strategy makes it clear that construction activity can continue as long as it complies with this guidance.

Please be assured that only sites that can operate within the guidelines are operational. All sites will remain under constant review. We have postponed all face-to-face engagement events and meetings and have put in place a number of channels to communicate with communities, such as letters and phone calls, as well as updates and alerts from each of the local community websites. You can sign up for regular updates in your local area at www.hs2inbucksandox.co.uk

What we will be doing?

As part of our continuing works ahead of the construction of the railway we need to undertake some further work in your area, these works will consist of:

- Construction of two small compounds
- Hedgerow and tree clearance
- Great crested newt fencing
- Archaeological investigations

Construction of two small compounds

To enable us to carry out ecology and archaeological works, we will need to construct two small compounds. To build the compounds we will initially use mobile welfare facilities. Once built the compounds will include temporary trackway, office and welfare facilities alongside storage of machinery and materials. Car parking and 24-hour security with temporary flood lighting will also be in place. Please see maps below for locations.

If you have a question about HS2 or our works, please contact our HS2 Helpdesk team on 08081 434 434 or email hs2enquiries@hs2.org.uk

Notification



Duration of works

The compound and ecology works will start in mid July 2020 and will be completed by end November 2020

The archaeological works will start mid-August 2020 until the middle of October 2020.

Normal working hours:

Monday to Friday 8am – 6pm.

Our contractors may also be on site for one hour's quite start-up and shutdown outside of these times.

What to expect

Some additional traffic on local roads. Some noise from equipment used for the works. Site storage and welfare vehicles. Site manned with 24-hour security and temporary flood lighting

What we will do

Manage any impacts, such as traffic and noise with the aim of reducing or removing them

Notice of compounds set up, ecology works and trial trench evaluations, Twyford

www.hs2.org.uk

Notification



Great crested newt fencing

Newt fencing consists mainly of a plastic membrane which is buried into the ground and supported by stakes. This is to prevent newts entering the work area, and to collect the newts. Collected newts are then taken to an ecology approved mitigation site that has been prepared for them and is suitable to support the population. We will move the newts and reptiles from an area scheduled for future works to a new habitat site. Ecologists use pit fall traps and mats which are set along the line of the fencing.

When the newts move from the breeding pond, they move towards the line of the fence until they either fall into the trap or hide under a mat. All traps are checked daily by experienced ecologists who are accredited under the HS2 Great Crested Newt Licence.

Hedgerow and tree clearance

Hedgerow clearance will be required to install the great crested newt fencing and to allow the workforce to move around the site. Localised tree removal may also be necessary to complete fencing works. Before any vegetation is cleared it will be thoroughly inspected by qualified ecologists. Any protected species found to be present will be recorded and no vegetation will be cleared until the species have left the site. The ecologist will check the trees and hedgerows for nesting birds and if any are found the works within the area will be postponed, or an alternative access will be sought. Extensive ecological and tree surveys have been undertaken ahead of this work. There will be no clearance of ancient woodland.

The vegetation clearance will be undertaken in accordance with:

- HS2 Organisational European Protected Species Great for Crested Newt Licences WML025. First issued March 2017.
- HS2 Organisational European Protected Species Licence for Badger WML024. First issued February 2018.

Further details are available online.

<https://www.gov.uk/government/publications/hs2-phase-one-environmental-statement-volume-5-ecology>

- The work on HS2 is guided by High-Speed Rail (LondonWestMidlands) Act 2017.

<http://www.legislation.gov.uk/ukpga/2017/7/contents/enacted>

This clearance work will be completed by a small workforce who will use machinery and hand-held equipment to clear sections of hedgerows and trees to enable the construction access to take place. The vegetation clearance is identified in purple on the map enclosed.

How may this affect you?

Access to the site will be off West Street. The access points for these fields are shown on the plan below.

Temporary verge access signage will be installed on the highway verge approaching the entrance to the site. These will be on standard signage A-Frames and secured with ballasted sandbags which will be placed on the roadside verges. These will be in place for the duration of the works.

There may be some noise from the machinery, this will be restricted to running between the hours of 8am to 6pm Monday to Friday. There may be occasional weekend working subject to local authority consent. Updates will be shared on www.hs2inbucksandbox.co.uk.

Notice of compounds set up, ecology works and trial trench evaluations, Twyford

www.hs2.org.uk

Notification



Archaeological investigations

What will we be doing?

As part of HS2's continued programme of surveying works in your local area we have already carried out geophysical surveys to identify areas of possible archaeological interest. The next steps of our archaeological investigation work will involve excavating trenches and recording any finds.

We will begin archaeological investigations at Portway Farm in the area shown on the map. These works will enable a greater understanding of significant archaeology in the area. This will require the excavation of a number of trial trenches. Once the work is complete, the trenches will be backfilled.

These works are planned to start mid - August 2020 and will be completed by mid - October 2020. This work will be carried out by Infra, Fusion's archaeology subcontractor. The digging and investigations will be done by teams of five workers using a mechanical excavator. There will be a maximum of two teams on site and a small number of supervision staff visiting site to ensure the work is progressing to plan and is being done safely.

The compound shown on the map below will be used by the archaeological teams to undertake their work.

There will be two access routes to the site, along Gawcott Road and Main Street. Temporary verge access signage will be installed on the highway verge approaching the entrance to the site. These will be on standard signage A-Frames and secured with ballasted sandbags which will be placed on the roadside verges. These will be in place for the duration of the works.

How may this affect you?

We will be working hard to ensure any impacts on residents are kept to a minimum during these and all our future works. You may notice a little extra traffic on the road immediately around the sites with workers moving to and from the site, and occasional delivery vehicles. There may be some noise from the machinery. All machinery will be restricted to running between the hours of 8am to 6pm Monday to Friday. There may be occasional weekend working subject to local authority consent.

Notice of compounds set up, ecology works and trial trench evaluations, Twyford

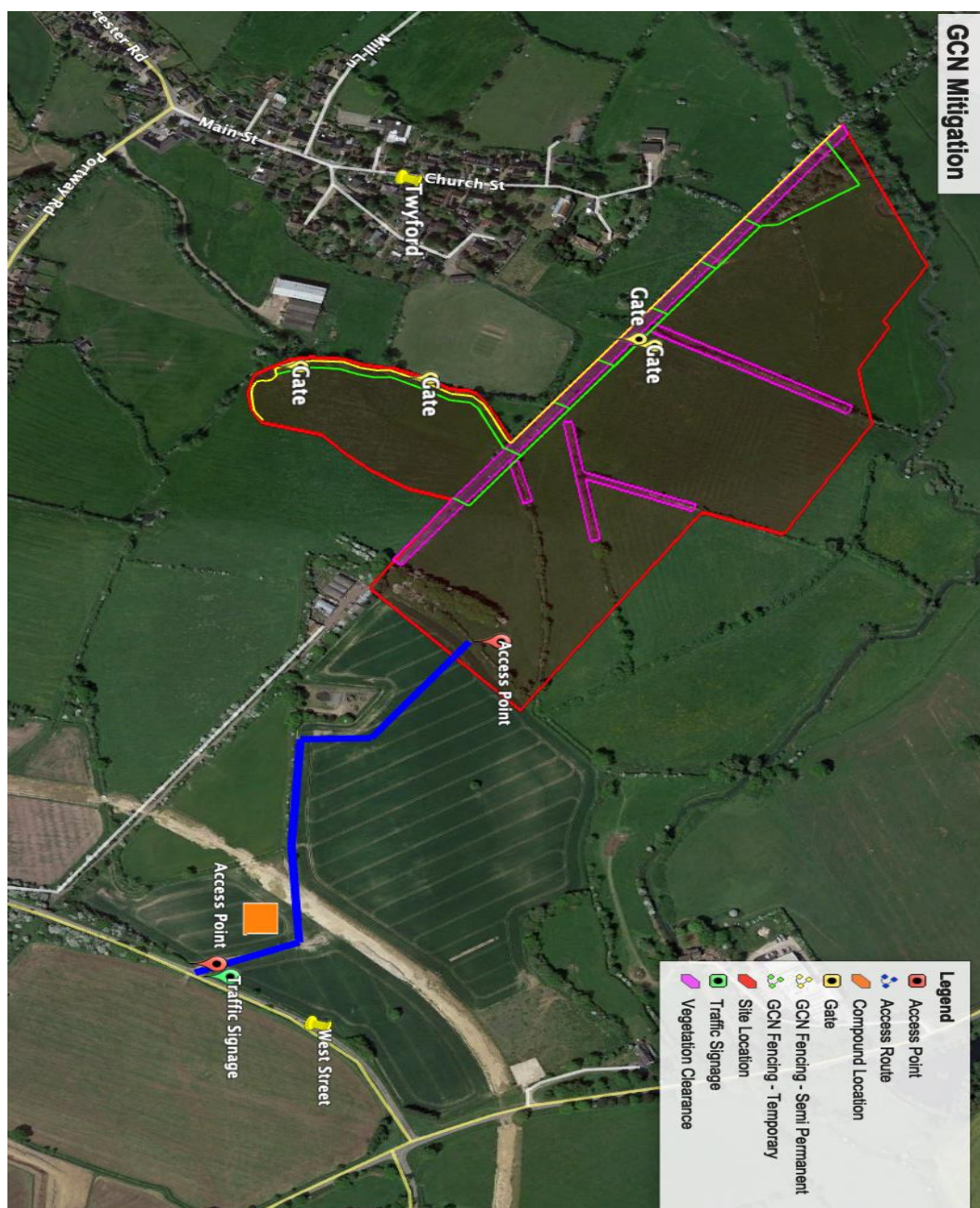
Notification



www.hs2.org.uk

Location of compound ecology works and hedgerow clearance

Great Crested Newt (GCN) mitigation works



Contact our HS2 Helpdesk team on **08081 434 434**

Notice of compounds set up, ecology works and trial trench evaluations, Twyford

www.hs2.org.uk

Notification



Location of archaeological trial trench evaluation works shown in red



Contact our HS2 Helpdesk team on **08081 434 434**

What else is happening in your area?

www.hs2.org.uk

Contact our new HS2 Helpdesk team

Our new Helpdesk team is based in our Head Office in Birmingham. This is so that we can provide you with the best service possible. Our team is here to listen and respond to your enquiry, complaint or feedback to help us be a good neighbour.

You can contact our Helpdesk team all day, every day of the year on:

Freephone: **08081 434 434**

Minicom: **08081 456 472**

Email: hs2enquiries@hs2.org.uk

Keep up-to-date with your local community website

To find out more about what's happening in your area and receive regular email updates, you can sign up to our local community websites at: www.hs2inyourarea.co.uk.

About our Community and Business Funds

We are offering two funds that are available to local communities and businesses between the West Midlands and London, to help with the disruption caused by our construction work. These are the Community and Environment Fund (CEF) and the Business and Local Economy Fund (BLEF).

The CEF is designed to give communities the opportunity to share in the benefits of HS2. It is an allocated fund that communities are able to apply for, to help to support local projects that aim to improve their local area.

The BLEF is designed to support local economies that may be disrupted by the construction of HS2. BLEF grants are for local business support organisations and local authorities to help maintain business activity in local communities.

For more information about each of these funds, including how to apply, please visit: <https://www.groundwork.org.uk/hs2funds>



Contact our HS2 Helpdesk team on **08081 434 434**

Keeping you informed

We are committed to keeping you informed about work on HS2. This includes ensuring you know what to expect and when to expect it, as well as how we can help.

Residents' Charter and Commissioner

The Residents' Charter is our promise to communicate as clearly as we possibly can with people who live along or near the HS2 route.
www.gov.uk/government/publications/hs2-residents-charter

We also have an independent Residents' Commissioner whose job is to make sure we keep to the promises we make in the Charter and to keep it under constant review. Find reports at:
www.gov.uk/government/collections/hs2-ltd-residents-commissioner

You can contact the Commissioner at:
residentscommissioner@hs2.org.uk

Construction Commissioner

The Construction Commissioner's role is to mediate and monitor the way in which HS2 Ltd manages and responds to construction complaints. You can contact the Construction Commissioner by emailing:
complaints@hs2-cc.org.uk

Property and compensation

You can find out all about HS2 and properties along the line of route by visiting:
www.gov.uk/government/collections/hs2-property
Find out if you're eligible for compensation at:
www.gov.uk/claim-compensation-if-affected-by-hs2

Holding us to account

If you are unhappy for any reason you can make a complaint by contacting our HS2 Helpdesk team. For more details on our complaints process, please visit our website:
www.hs2.org.uk/how-to-complain

Contact Us

Contact our HS2 Helpdesk team all day, every day of the year on:

 Freephone **08081 434 434**

 Minicom **08081 456 472**

 Email **hs2enquiries@hs2.org.uk**

Write to:

FREEPOST

HS2 Community Engagement

Website **www.hs2.org.uk**

To keep up to date with what is happening in your local area, visit:
www.hs2inyourarea.co.uk

Please contact us if you'd like a free copy of this document in large print, Braille, audio or easy read. You can also contact us for help and information in a different language.

HS2 Ltd is committed to protecting personal information. If you wish to know more about how we use your personal information please see our Privacy Notice
<https://www.gov.uk/government/publications/high-speed-two-ltd-privacy-notice>

Reference number: FUS_AWN_0092

HS2-EW-FUS-Ph1-Ar-Ce-C2-Prog-works-9-09/07/2020

High Speed Two (HS2) Limited, registered in England and Wales.

Registered office: Two Snowhill, Snow Hill Queensway, Birmingham B4 6GA.

Company registration number: 06791686. VAT registration number: 888 8512 56.