

Notice of construction activities in Quainton

July 2020 | www.hs2.org.uk

High Speed Two (HS2) is the new high speed railway for Britain. We are continually reviewing the works on our construction sites in line with Government and Public Health England (PHE) advice on dealing with COVID-19. The Government's current strategy makes it clear that construction activity can continue as long as it complies with this guidance. Please be assured that only sites that can operate within the guidelines are operational. All sites will remain under constant review. We have postponed all face-to-face engagement events and meetings and have put in place a number of channels to communicate with communities, such as letters and phone calls, as well as updates and alerts from each of the local community websites. You can sign up for regular updates in your local area at www.hs2inbucksandox.co.uk

What will we be doing?

Before the main construction works for the railway begins, we need to undertake a number of activities:

- Construction of a compound north of Station Road
- Construction of an access road from the north of Station Road to the west of Greatmoor sidings, including culvert crossings of existing water courses including a temporary bridge across the River Ray
- Construction of public highway crossings where the access road crosses the existing highway
- Survey and investigation works on Station Road and to the junction with the A41 ahead of highway improvement works

Access road construction

An access road will be constructed this summer, which extends north from Station Road to the west of Greatmoor sidings. The access road is being constructed as a temporary construction traffic road which will allow us to move materials, construction machinery and the workforce around the site effectively and minimise traffic on local roads. The road will be approximately 4.2km long and have an asphalt surface.

If you have a question about HS2 or our works, please contact our HS2 Helpdesk team on 08081 434 434 or email hs2enquiries@hs2.org.uk

Notification



Duration of works

The works are due to start Summer 2020 and will continue until Spring 2021.

Working hours:

Monday to Friday

8.00am – 6.00pm

Saturday 8am – 1pm

Night time survey working at the junction of the A41 and Station Road.

06.00pm - 00.00am

Our contractors may be on site for one hour's start-up and shutdown either side of these times

What to expect

Temporary traffic signals

Road closures during construction works.

What we will do

Manage any environmental impacts, such as traffic and noise

Respond promptly to any complaints and take appropriate action

Take care to respect your community

Notice of construction activities in Quainton

Notification



www.hs2.org.uk

We wrote to you in April regarding the initial works for this access road describing the site clearance and the establishment of the works compounds at Station Road and Shipton Lee Road. This activity is ongoing and this notice provides detail for the subsequent work.

As part of the construction of the new two-way access road it needs to cross the public highway in a number of locations. Crossing points will tie into the existing highway. To construct each crossing we will require local traffic management in the form of traffic lights or road closures. Local access to properties near to the works will be maintained. The maps in this notification shows where the traffic management will be positioned and the local diversion routes.

The access road works taking place will consist of the following:

- Deliveries of materials and machinery along Station Road from the A41 and along Fiddlers Field to Shipton Lee Road.
- Advanced warning and diversion signs erected to show clear alternative routes when roads are closed or under traffic light control
- Excavation and stockpiling of the existing top and sub-soil along the line of the new road
- Provision of new utility services and local diversions
- Construction of the access road foundation and asphalt surface
- Installation of new drainage systems including culverts and settlement ponds
- Construction of a temporary steel bridge across the River Ray.
- Construction of new crossing points at connections with the existing highway. Traffic signals will be used to control construction traffic and construction plant travelling along the access road at crossings with the public highway

When will this access road work take place?

Works will begin in Summer 2020, where materials and machinery will be delivered to site. Then we will begin excavating and stockpiling the existing top and sub soil. The access road is due to be completed by the end of Spring 2021.

Notice of construction activities in Quainton

www.hs2.org.uk

Notification



How will this access road works affect you?

You may notice extra traffic on the roads due to the workforce and equipment movements in the area. HS2 construction traffic HGV's will not access through Quainton village and all vehicles of 7.5 tonnes or greater making deliveries to the site for the compounds will use Station Road from the A41 or Fiddlers Field to Shipton Lee Road.

We will be closely monitoring the roads around the site for dust and regular road sweeping will take place. We will take measures to ensure we keep mud off the local roads, such as cleaning dirty vehicles before they leave work areas.

Traffic management

During the construction of the site compounds and access road connection to Station Road and Shipton Lee Road there will be traffic management in place, in the form of temporary traffic lights. Advanced warning signs will be displayed prior to the works starting.

The vegetation clearance and installation of a vehicle access point alongside Fiddlers Field Lane will require at times traffic management in the form of traffic lights, to maintain access to properties. The traffic lights will remain in place throughout all the works.

When we construct the new crossing points onto the access road along Shipton Lee, Lawn Hill and Fiddlers Field Lane, we need to divert existing utilities which will require the roads to be closed in phased sequences. We will provide details of these closures nearer the time and advertise the closures with verge advance warning signage.

On completion of the crossing points, four-way traffic signals will remain in place on Lawn Hill Road in the form of a construction plant crossing point. The plant crossing is to ensure the safety of road users and pedestrians and to minimise any disruption to traffic.

Station Road and A41 junction survey works

Station Road from the A41 will be the main local access point onto the HS2 construction route in this area. This will link up to the access road we are constructing. To understand the condition of the highway we are going to undertake some survey work over three phases of work. This is ahead of improvement works later this Summer / Autumn to Station Road and the A41 junction.

Notice of construction activities in Quainton

www.hs2.org.uk

Notification



The Station Road and A41 survey works taking place will consist of the following:

Phase one: Station Road: Monday 27 July 9:30am to 3:30pm

Works will take place to install temporary traffic survey equipment on Station Road. At times traffic light control will be used to install this equipment. Station Road will remain open throughout this phase of works.

A further two phases of works are required to take core samples from the existing road using a small drilling rig for laboratory testing. We will also be excavating trial holes to identify the exact location and depth of services which may be affected by the improvement works. Each hole will be filled back in before we remove the traffic management.

Phase two: Station Road Closures: 29, 30, 31 July 3 August (9:30 am to 3:30pm)

Survey works along Station Road from the junction of Fiddlers Field to the junction of the A41 will be carried out weekdays during a road closure between the hours of 9.30am and 3.30pm. This closure is required to undertake the works safely. To minimise disruption the works are being carried out during the school holidays and outside of peak periods. The diversion route map is shown later in this notice.

Phase three: A41 Station Road Junction, 4 nights, (6pm to midnight)

Survey works at the A41/Station Road Junction will be undertaken under three-way traffic light control. Station Road and the A41 will be reduced to a single lane during this time. The survey works at the A41 junction will be carried out on the following dates:

Tuesday 28 July and then following a short break for a further three nights on the 4, 5 and 6 August. Works will be carried out between the hours of 06.00pm and 12.00am to reduce disruption on the A41.

Night working at the A41 junction with Station Road

We are working in the evening up to midnight to reduce the impact on traffic travelling along the A41. The works will be closely monitored for noise. Activities being undertaken include the temporary installation of traffic counter devices, trial holes and road surface core holes.

The maps below show where the roads will be closed and the diversion routes that will be in place whilst the works are completed.

Notice of construction activities in Quainton

Notification



www.hs2.org.uk

Map below shows the location of the access road works taking place



Contact our HS2 Helpdesk team on **08081 434 434**

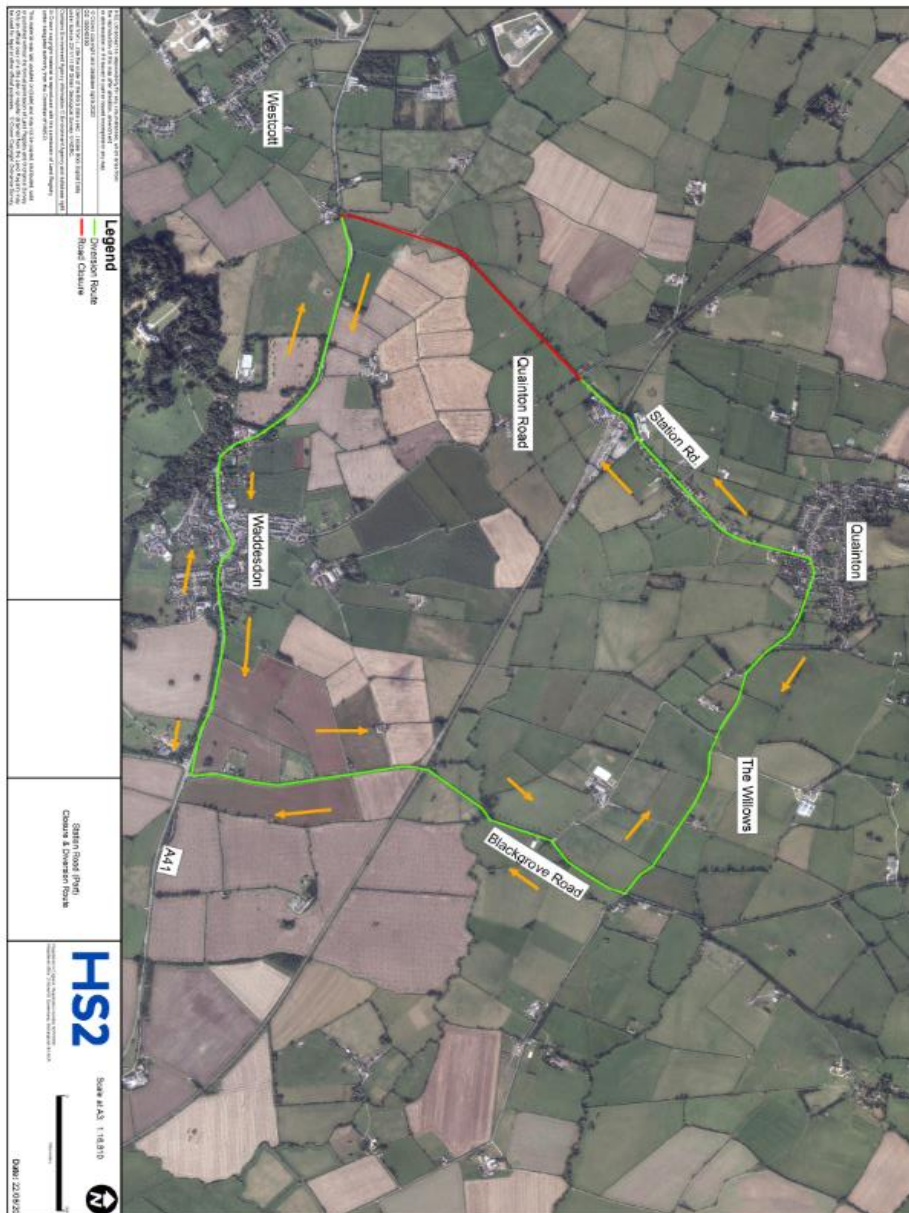
Notice of construction activities in Quainton

Notification



www.hs2.org.uk

Map showing the diversion route when Station Road is closed for survey works



Contact our HS2 Helpdesk team on **08081 434 434**

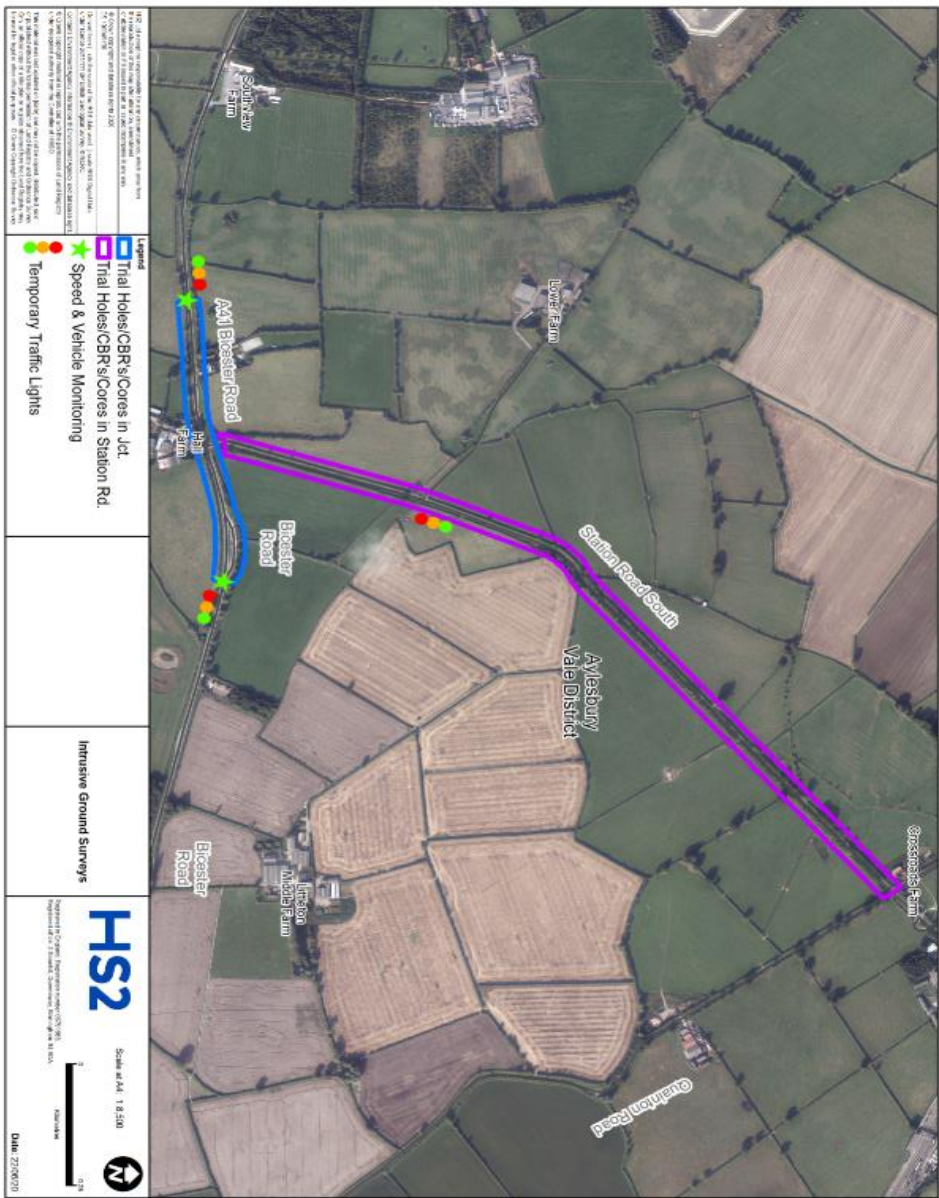
Notice of construction activities in Quainton

Notification



www.hs2.org.uk

Map showing the location of the 3-way traffic lights for the survey works on the A41 Station Road Junction



Contact our HS2 Helpdesk team on **08081 434 434**

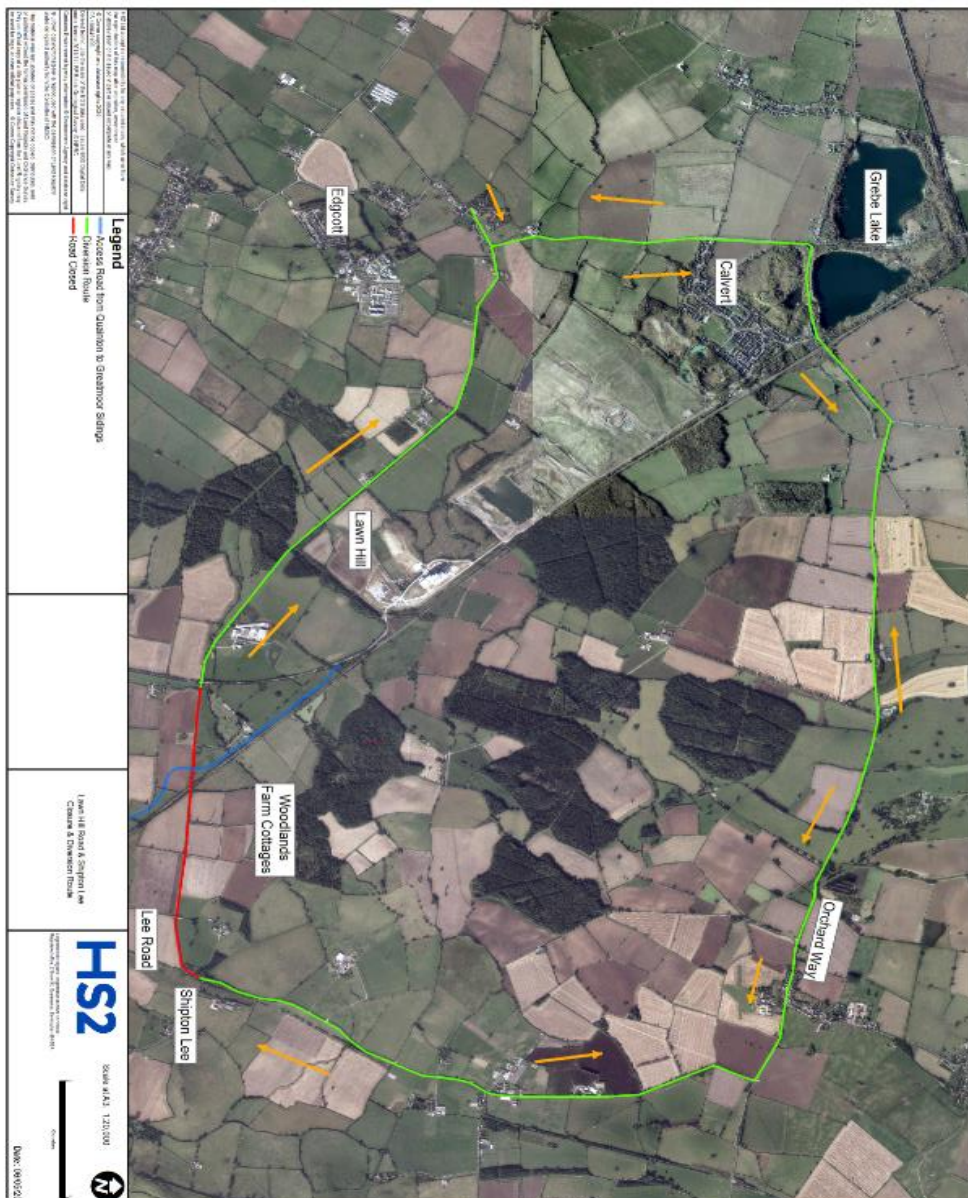
Notice of construction activities in Quainton

Notification



www.hs2.org.uk

**Road closure and diversion route for Lawn Hill and Shipton Lane.
(Anticipated 23 day road closure required to construct the temporary access road crossings)**



Contact our HS2 Helpdesk team on **08081 434 434**

Notice of construction activities in Quainton

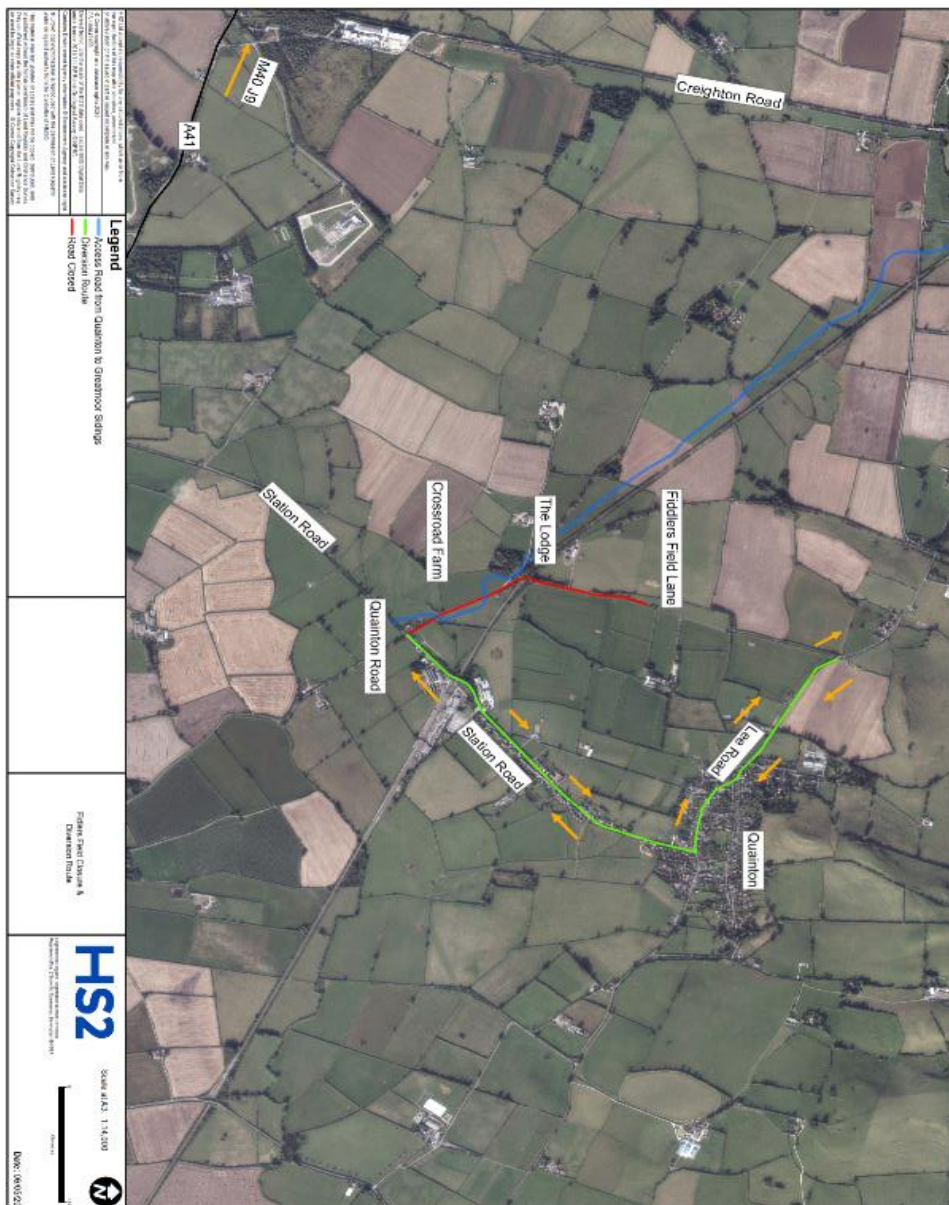
Notification



www.hs2.org.uk

Road closure and diversion route for Fiddlers Field Lane.

(Anticipated 24 day road closure required to undertake the access road highway crossings)



Contact our HS2 Helpdesk team on **08081 434 434**

Keeping you informed

We are committed to keeping you informed about work on HS2. This includes ensuring you know what to expect and when to expect it, as well as how we can help.

Residents' Charter and Commissioner

The Residents' Charter is our promise to communicate as clearly as we possibly can with people who live along or near the HS2 route.
www.gov.uk/government/publications/hs2-residents-charter

We also have an independent Residents' Commissioner whose job is to make sure we keep to the promises we make in the Charter and to keep it under constant review. Find reports at:
www.gov.uk/government/collections/hs2-ltd-residents-commissioner

You can contact the Commissioner at:
residentscommissioner@hs2.org.uk

Construction Commissioner

The Construction Commissioner's role is to mediate and monitor the way in which HS2 Ltd manages and responds to construction complaints. You can contact the Construction Commissioner by emailing:
complaints@hs2-cc.org.uk

Property and compensation

You can find out all about HS2 and properties along the line of route by visiting:
www.gov.uk/government/collections/hs2-property
Find out if you're eligible for compensation at:
www.gov.uk/claim-compensation-if-affected-by-hs2

Holding us to account

If you are unhappy for any reason you can make a complaint by contacting our HS2 Helpdesk team. For more details on our complaints process, please visit our website:
www.hs2.org.uk/how-to-complain

Contact Us

Contact our HS2 Helpdesk team all day, every day of the year on:

 Freephone **08081 434 434**

 Minicom **08081 456 472**

 Email **hs2enquiries@hs2.org.uk**

Write to:

FREEPOST

HS2 Community Engagement

Website **www.hs2.org.uk**

To keep up to date with what is happening in your local area, visit:
www.hs2inyourarea.co.uk

Please contact us if you'd like a free copy of this document in large print, Braille, audio or easy read. You can also contact us for help and information in a different language.

HS2 Ltd is committed to protecting personal information. If you wish to know more about how we use your personal information please see our Privacy Notice
<https://www.gov.uk/government/publications/high-speed-two-ltd-privacy-notice>

Reference number: FUS_AWN_0070

HS2-EW-FUS-Ph1-Ar-Ce-C2-Prog-works-11-13/07/2020

High Speed Two (HS2) Limited, registered in England and Wales.

Registered office: Two Snowhill, Snow Hill Queensway, Birmingham B4 6GA.

Company registration number: 06791686. VAT registration number: 888 8512 56.