

# Notice of Ground Investigations – Wendover

August 2020 | [www.hs2.org.uk](http://www.hs2.org.uk)

High Speed Two (HS2) is the new high speed railway for Britain. We are continually reviewing the works on our construction sites in line with Government and Public Health England (PHE) advice on dealing with COVID-19. You can sign up for regular updates in your local area at [www.hs2inbucksandox.co.uk](http://www.hs2inbucksandox.co.uk).

## Who is EKFB?

Eiffage Kier Ferroviaire BAM (EKFB) is one of the contractors carrying out civil engineering works for the new HS2 line. EKFB will undertake all earthworks and landscaping in this area as well as creating bridges, viaducts and green tunnels.

## What are we doing?

As part of HS2's preparation works, we will be carrying out Ground Investigations (GI) works around Wendover, in the Small Dean Lane area off the A413 (please see the map).

## When will these works take place?

We expect to start this work from 17 August 2020, while the junction improvement works are being undertaken. This should avoid the need for any additional closure or disruption. The works are not expected to take more than four weeks.

## What does the work involve?

Ground Investigations are surveys which are undertaken to assess and help us understand the landscape we are working on. We drill small holes into the ground to extract soil samples for testing using drilling rigs which are small enough to be towed by an off-road vehicle.

- **Rotary drilling** – this is a tracked machine that allows us to drill conventionally to any depth. Samples will be taken as we drill through the rock. The drill will be lubricated with either water, air or mud throughout the process. The drilling machines we use are the same size as a small excavator.

**If you have a question about HS2 or our works, please contact our HS2 Helpdesk team on 08081 434 434 or email [hs2enquiries@hs2.org.uk](mailto:hs2enquiries@hs2.org.uk)**

## Notification



### Duration of works

Works begin August 2020 until September 2020

Normal working hours:  
Monday to Friday  
8.00am – 6.00pm

Saturdays  
8.00am – 1.00pm

Our contractors may be on site for one hour's start-up and shutdown either side of these times.

### What to expect

The temporary closure of Small Dean Lane.

Agreed routes will be used by a small number of HGVs and vehicles. A lot of equipment will be moved by local farm tractors and trailers.

### What we will do

Manage any environmental impacts, such as traffic and noise.

Inform you of any changes to the provided dates.

Respond promptly to any complaints and take appropriate action.

# Notice of Ground Investigations – Wendover

Notification



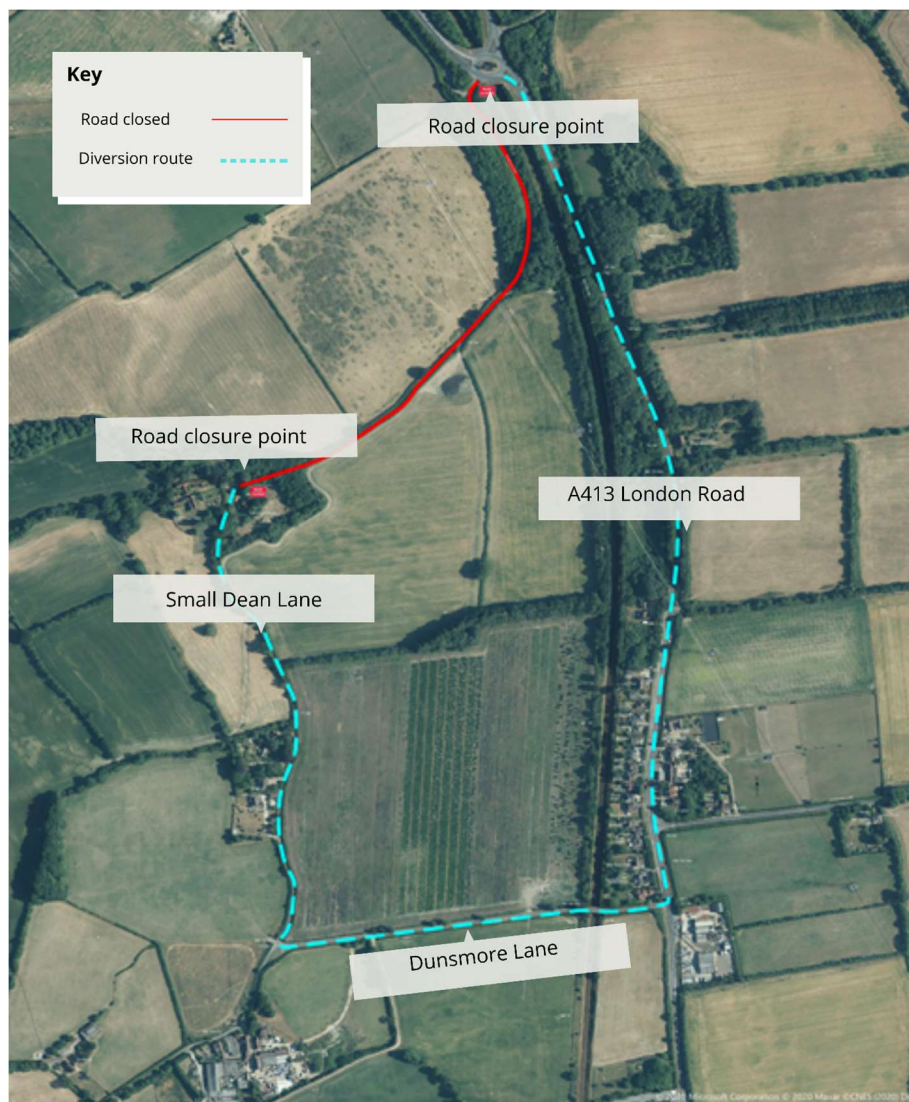
[www.hs2.org.uk](http://www.hs2.org.uk)

## What does the work involve?

- **Cable percussive drilling** – uses a winch which lifts and drops a cutting head into the borehole, which normally will stop around 25 metres below ground surface. The drill is lubricated using water. The team will continue to take samples as they drill through the rock.
- **Continuous surface wave** – this is a non-intrusive test where a grid is set on the surface and sound waves are sent out and the results are then recorded.
- **Trial pitting** – using an excavator to dig a pit approximately 4 metres deep and take samples. Sometimes there is a need to dig a trial trench which will be 4 metres deep and 10 metres in length, taking samples as we go. The pits are then back filled on completion of sampling.

## Where will the works take place?

The following map shows the road closure on Small Dean Lane.



Contact our HS2 Helpdesk team on **08081 434 434**

# Keeping you informed

We are committed to keeping you informed about work on HS2. This includes ensuring you know what to expect and when to expect it, as well as how we can help.

## Residents' Charter and Commissioner

The Residents' Charter is our promise to communicate as clearly as we possibly can with people who live along or near the HS2 route.

[www.gov.uk/government/publications/hs2-residents-charter](http://www.gov.uk/government/publications/hs2-residents-charter)

We also have an independent Residents' Commissioner whose job is to make sure we keep to the promises we make in the Charter and to keep it under constant review. Find reports at: [www.gov.uk/government/collections/hs2-ltd-residents-commissioner](http://www.gov.uk/government/collections/hs2-ltd-residents-commissioner)

You can contact the Commissioner at: [residentscommissioner@hs2.org.uk](mailto:residentscommissioner@hs2.org.uk)

## Construction Commissioner

The Construction Commissioner's role is to mediate and monitor the way in which HS2 Ltd manages and responds to construction complaints. You can contact the Construction Commissioner by emailing: [complaints@hs2-cc.org.uk](mailto:complaints@hs2-cc.org.uk)

## Property and compensation

You can find out all about HS2 and properties along the line of route by visiting:

[www.gov.uk/government/collections/hs2-property](http://www.gov.uk/government/collections/hs2-property)

Find out if you're eligible for compensation at:

[www.gov.uk/claim-compensation-if-affected-by-hs2](http://www.gov.uk/claim-compensation-if-affected-by-hs2)

## Holding us to account

If you are unhappy for any reason you can make a complaint by contacting our HS2 Helpdesk team. For more details on our complaints process, please visit our website:

[www.hs2.org.uk/how-to-complain](http://www.hs2.org.uk/how-to-complain)

## Contact Us

Contact our HS2 Helpdesk team all day, every day of the year on:

 Freephone **08081 434 434**

 Minicom **08081 456 472**

 Email **[hs2enquiries@hs2.org.uk](mailto:hs2enquiries@hs2.org.uk)**

Write to:

**FREEPOST**

**HS2 Community Engagement**

Website **[www.hs2.org.uk](http://www.hs2.org.uk)**

To keep up to date with what is happening in your local area, visit: **[www.hs2inyourarea.co.uk](http://www.hs2inyourarea.co.uk)**

**Please contact us if you'd like a free copy of this document in large print, Braille, audio or easy read. You can also contact us for help and information in a different language.**

HS2 Ltd is committed to protecting personal information. If you wish to know more about how we use your personal information please see our Privacy Notice <https://www.gov.uk/government/publications/high-speed-two-ltd-privacy-notice>

**Reference number: 1MC12-CEK-SE-NTE-CS03-000001**  
**HS2-EW-EK-Ph1-Ar-Ce-C2-Gr-Set-2-08/11/2020**

High Speed Two (HS2) Limited, registered in England and Wales.  
Registered office: Two Snowhill, Snow Hill Queensway, Birmingham B4 6GA.  
Company registration number: 06791686. VAT registration number: 888 8512 56.