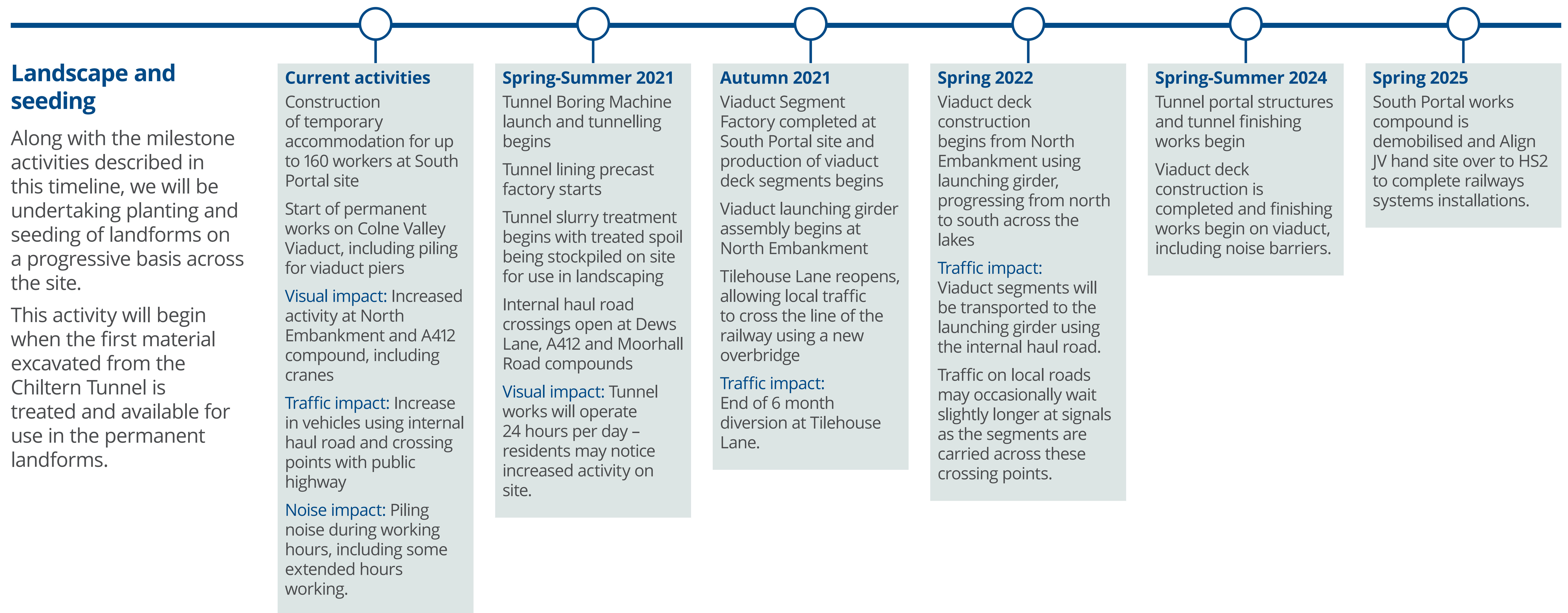


South Portal and Western Slopes Timeline

Below is an indicative timeline of construction activities in the Colne Valley and at the South Portal. We have highlighted those which may be more noticeable to local residents.



Thank you

Thank you for viewing our online exhibition.

Next steps

We will continue engagement with the local community to provide regular updates on the progress of construction.

Information events

For more information and to find out how to receive regular updates, please visit the HS2 community website for your area:

www.hs2inbucksandox.co.uk

www.hs2inherts.co.uk

www.hs2inhillington.co.uk

You can contact our HS2 Helpdesk team all day, every day of the year on:

Freephone: 08081 434 434

Minicom: 08081 456 472

Email: hs2enquiries@hs2.org.uk



Visualisation - Elevated view over the CVWS looking north west (Year 15)