

Notification



Early Works Notification Risborough Road Works

December 2020 | www.hs2.org.uk

High Speed Two (HS2) is the new high speed railway for Britain. We are continually reviewing the works on our construction sites in line with Government and Public Health England (PHE) advice on dealing with COVID-19. The Government's current strategy makes it clear that construction activity can continue as long as it complies with this guidance. Please be assured that only sites that can operate within the guidelines are operational. All sites will remain under constant review. You can sign up for regular updates in your local area at www.hs2inbucksandbox.co.uk

What are we doing?

We are looking to mobilise and set up a temporary compound off Old Risborough road. This location will be where the proposed Stoke Mandeville relief road will start.

What to expect:

1. Temporary compound set-up with welfare units, cabins, stock-pile area, car parking and other associated activities.
2. Traffic management in the area while a temporary break from highway is constructed off the Risborough Road.
3. Ground investigations including utility and further survey works to completed.
4. Some localised vegetation clearance and fencing works



If you have a question about HS2 or our works, please contact our HS2 Helpdesk team on 08081 434 434 or email hs2enquiries@hs2.org.uk

Duration of works

Works will commence in January 2021

Normal working hours:

Monday to Friday
8.00am – 6pm

Saturdays
8.00am – 1.00pm

Our contractors may be on site for one hour's start-up and shutdown either side of these times.

What to expect

Traffic management on some local roads.

What we will do

Manage any environmental impacts, such as traffic, noise and lighting.

Respond promptly to any complaints and take appropriate action.

Take care to respect the community.

Early Works Notification

Risborough Road Works

www.hs2.org.uk

Notification



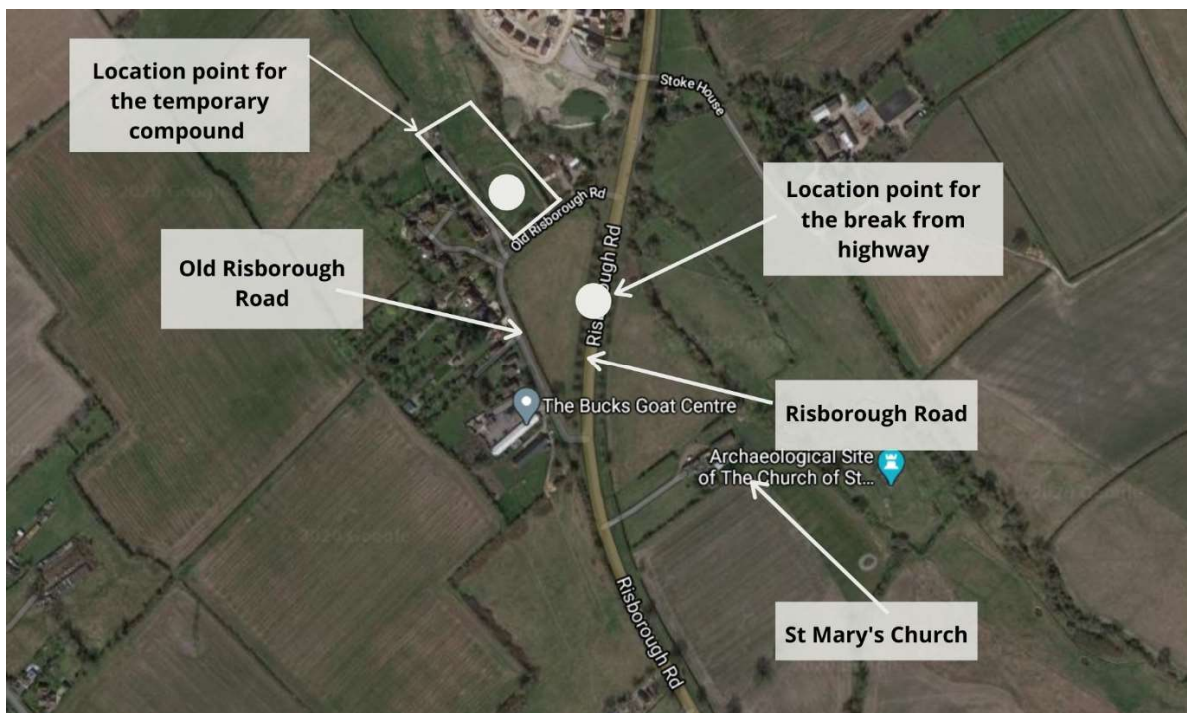
When will these works take place?

- We are looking to commence on site from the **11th January 2021**. From this point you will see activities included in setting up a temporary compound area with some welfare units and parking. These activities will be located at the rear of the site to minimise local impact.
- From the week commencing the **25th January 2021** expect to see some traffic management in the area for approximately 3 weeks as we create a temporary break from highway which is required for safe access into the site. The traffic management where practical shall be in place from 9am – 3pm to avoid peak traffic times.

Where will the works take place?

We will be working in the area off the A4010, Risborough Road and Old Risborough Road as illustrated on the map below.

The compound area and temporary access road is located off the Old Risborough road and the break from highway for the internal access road will be off the Risborough Road.



Contact our HS2 Helpdesk team on **08081 434 434**

Keeping you informed

We are committed to keeping you informed about work on HS2. This includes ensuring you know what to expect and when to expect it, as well as how we can help.

Residents' Charter and Commissioner

The Residents' Charter is our promise to communicate as clearly as we possibly can with people who live along or near the HS2 route.

www.gov.uk/government/publications/hs2-residents-charter

We also have an independent Residents' Commissioner whose job is to make sure we keep to the promises we make in the Charter and to keep it under constant review. Find reports at:

www.gov.uk/government/collections/hs2-ltd-residents-commissioner

You can contact the Commissioner at:
residentscommissioner@hs2.org.uk

Construction Commissioner

The Construction Commissioner's role is to mediate and monitor the way in which HS2 Ltd manages and responds to construction complaints. You can contact the Construction Commissioner by emailing:
complaints@hs2-cc.org.uk

Property and compensation

You can find out all about HS2 and properties along the line of route by visiting:

www.gov.uk/government/collections/hs2-property

Find out if you're eligible for compensation at:

www.gov.uk/claim-compensation-if-affected-by-hs2

Holding us to account


If you are unhappy for any reason you can make a complaint by contacting our HS2 Helpdesk team. For more details on our complaints process, please visit our website:

www.hs2.org.uk/how-to-complain

Contact Us

Contact our HS2 Helpdesk team all day, every day of the year on:

 Freephone **08081 434 434**

 Minicom **08081 456 472**

 Email **hs2enquiries@hs2.org.uk**

Write to:

FREEPOST

HS2 Community Engagement

Website **www.hs2.org.uk**

To keep up to date with what is happening in your local area, visit:
www.hs2inyourarea.co.uk

Please contact us if you'd like a free copy of this document in large print, Braille, audio or easy read. You can also contact us for help and information in a different language.

HS2 Ltd is committed to protecting personal information. If you wish to know more about how we use your personal information please see our Privacy Notice

<https://www.gov.uk/government/publications/high-speed-two-ltd-privacy-notice>

Reference number: 1MC12-EKF-IN-NTE-CS04-000003

High Speed Two (HS2) Limited, registered in England and Wales. Company registration number: 06791686. VAT registration number: 181 4312 30

Registered office: Two Snowhill, Snow Hill Queensway, Birmingham B4 6GA.

Contact our HS2 Helpdesk team on **08081 434 434**