



COMMUNITY NEWSLETTER

OCTOBER 2022

LEWISHAM SHOPPING CENTRE

At Landsec, we are developing plans to shape a new centre for Lewisham. Our plans will redefine the town centre – offering everyone better choices and new experiences that are firmly rooted in Lewisham's people and culture.

In this newsletter, you can find out more about a range of community activities taking place at Lewisham Shopping Centre and in the local area, as well as details on how to get involved.

LEWISHAM LEGENDS MURALS



Ono Dafedjaiye by Molly Hankinson
(Photos courtesy of the artist @mollyhankinson.studio)

LEWISHAM PEOPLE'S DAY P.2



DESIGN CHAMPIONS P.4



Lewisham Legends

We've teamed up with Lewisham Council to celebrate local trailblazers that have made the Borough such a special place. Six murals of Lewisham Legends, created by local artists, are now standing tall all over the shopping centre. We were thrilled to host the launch event last week.

Why not come along and check out the murals? Share any snaps with us on social media using **#LewishamLegends**

Celebrating Lewisham Educators by Shauna Blanchfield



Volunteers across the Borough by Emma Barnie



Lewisham Living Room

On 19 November, we will be launching the 'Lewisham Living Room' – a series of pop-up events in Lewisham Shopping Centre to have informal conversations with residents. We want to hear from you about your aspirations for the local area and what a changing town centre means to the local community. There will be craft activities for all ages. We will also be joined by Goldsmiths, University of London who are gathering local oral history (see more on P.3). Visit our website for more details: [lewishamcentral.commonplace.is](https://www.lewishamcentral.commonplace.is)

📍 **19 November 2022**

🕒 **11am–4pm**

📅 **Central Square, Lewisham Shopping Centre**

WHAT WE'VE BEEN UP TO...



Giving Tree

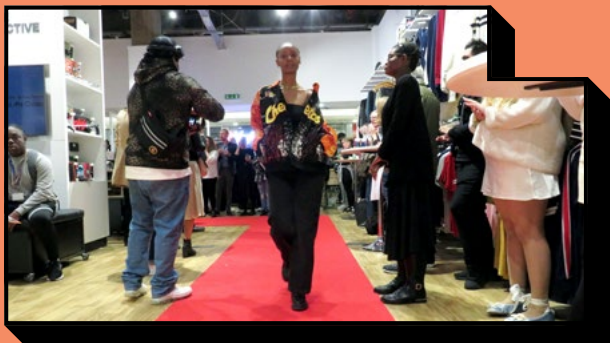
This year, we are partnering with the Bank of Things, a project that aims to address the issue of poverty and lack of resources for young people in the Borough. A key part of this is to supply everyday necessities to any young person facing hardship living in Lewisham.

We are working with volunteers from local faith groups and schools to gather donations. If you would like to donate everyday items, they can also be dropped off at the Bank of Things (Unit 19, Lewisham Shopping Centre). Find out more: www.lewishamlocal.com/lewisham-bank-of-things/



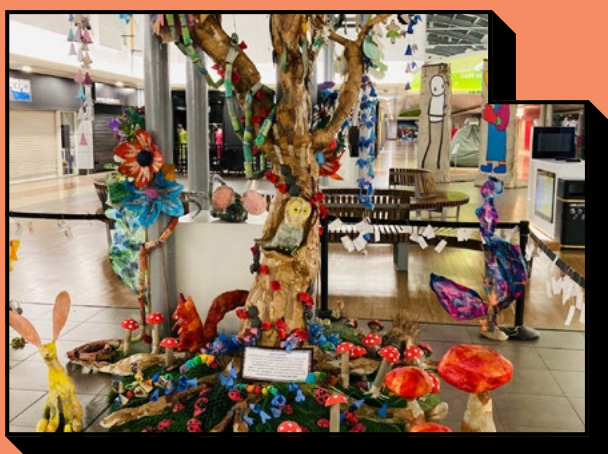
Busy bees

Coexisting with bees in cities is easy and natural. Together with Alvéole, we have installed beehives on the rooftop of the shopping centre. The bees are very happy to be at their new home at Lewisham Shopping Centre and busy making honey. We can't wait for you to taste it. To find out more, visit: myhive.alveole.buzz/landsec-lewisham-shopping-centre



Circle Collective

As a long-term supporter of Circle Collective, we hosted the annual Circle Collective graduation event last month to celebrate local young people completing their training programme. Circle Collective supports young people experiencing a range of barriers to finding life-changing employment. Find out more by visiting the Circle Collective (Unit 4, Lewisham Shopping Centre).



Garden of Hope

Primary students have been putting the finishing touches on their project - 'The Garden of Hope'. The art installation, featuring sculptures of animals, nature and messages of hope for the future, was made using recycled materials by 400 students from schools across Lewisham. The installation is now on display in Central Square in Lewisham Shopping Centre.

Lewisham People's Day

In July, we attended Lewisham People's Day and hosted a marquee. Festival goers were invited to create their own t-shirts with Lewisham as inspiration and to post suggestions for a brand-new community building on our wishing wall.

The feedback gathered was further discussed during two focus workshops attended by young people from the Circle Collective and members of civic groups around Lewisham. We look forward to sharing our thoughts on the proposed community building in the coming months.

HAPPENING IN OCTOBER



Recycling Olympics

This month, we held a Recycling Olympics as part of our recycling week with games and activities to promote awareness of recycling and how to do it correctly. Thank you to all the 'Olympians' for taking part and going the extra mile to help reduce waste!



Rhythm of Hope

On 25 October, we welcomed Mohamed Gueye – Internationally recognised percussionist and djembe drummer and Lewisham resident – to perform in the Garden of Hope in Central Square. Gueye performed a traditional Senegalese piece "Rhythm of Hope". The performance was followed by a live workshop with students from Blackheath Prep and Prendergast School.



It's time to get spooky

We've teamed up with Lewisham Council to host a Halloween pumpkin carving event. Come down to the shopping centre's Central Square on 29 October for free activities. Come and join us in your best Halloween outfit!

SHARE YOUR LOVE FOR LEWISHAM



Lewisham Lens

Lewisham Lens is a project set up by We Are Lewisham and Luke Agbaimoni, photographer and the creator of Tube Mapper, as part of the London Borough of Culture programme. The project is inviting local residents to share photographs of local architecture and iconic buildings that capture the character of Lewisham. The exhibition will take place in the shopping centre at the end of the project. Find out more and how you can take part in We Are Lewisham's creative challenges: www.wearelewisham.com/creativechallenges/architecture



Memories of Lewisham

Today's vibrant and diverse town centre of Lewisham is a legacy of the area's rich history. Do you have a story to tell about Lewisham? Later this year, Goldsmiths, University of London will launch a new local history research project about the Lewisham town centre. The project is looking for stories, lived experiences and memories shared by the people of Lewisham. If you would like to get involved, come and speak to us at the Lewisham Living Room on 19 November or contact us using the details overleaf.

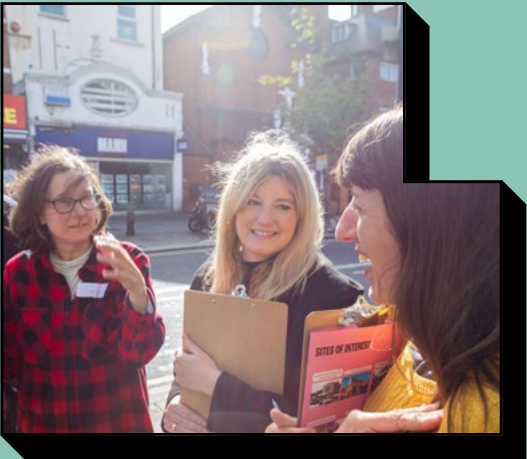
OUR LOCAL DESIGN CHAMPIONS

We have recruited a group of design champions **made up of 30 local residents and representatives** to work directly with our architects and Landsec to shape our design proposals for the Lewisham Shopping Centre development



LAUNCH

We were excited to launch the design champion process last month at Lewisham Youth Theatre, where champions were introduced to the project and told how they can help shape a new centre for Lewisham. During the event, champions also had the chance to meet the project team and get to know other fellow champions.



FIRST WORKSHOP

At the first workshop which took place earlier this month, our design champions led the project team on a walkabout around the town centre. During the walk, the group explored different points of local interest and looked into how spaces are used and what makes Lewisham town centre vibrant and unique. Following the walk, the champions discussed the different characteristics of the town centre and the changing role of the shopping centre in relation to the local community.

GETTING IN TOUCH WITH THE TEAM

If you have any questions or queries, do not hesitate to contact us. We will be holding a number of exciting engagement events to share our plans for the future of Lewisham Shopping Centre, so if you would like to get involved, please get in touch using the contact details on the right.

Scan the QR code to visit our website



✉ lewishamconsultation@soundingsoffice.com

🌐 lewishamcentral.commonplace.is

☎ 020 7729 1705